



KANSAS GEOLOGICAL SOCIETY

BULLETIN

Volume 79 Number 6

November-December 2004

IN THIS ISSUE...

12 Member Profile: Willis Nigh

14 Meet The Candidates

23 Photo Highlights of Shooting Tournament

THIS MONTH AT THE KGS

Nov. 3 Rick Fritz, *"Presentation on the Red Fork"*

Nov. 10 Alan P. Byrnes, *"Modeling Recovery From Kansas Miss & LKC Reservoirs-Why Reservoirs in the Transition Zone Produce More Oil & Water Than They Seem Like They Should"*

Nov. 17 Pat Gratton, *"Barnett Shale Play"*

NEXT MONTH AT THE KGS

Dec. 1 Jim Gibbs, *"Purchase of Producing Properties"*

Dec. 8 Meer Husain, *"Understanding Ground Water Arsenic Poisoning in Bengal Basin"*

Dec. 15 Kirsten Nicholaysen, *To Be Announced*

You Focus on the
Prospects,
Leave the
Well Log Data
to A2D

Coming Soon:
smartSECTION 5.0



- LOG-LINE Plus!® Online Well Log Database
- Digital and Hardcopy Well Logs
- Well Log Digitization Services
- Workstation Ready Logs
- Pore Pressure Analysis and Purified Logs
- Flexible ADVANTAGE Data Subscriptions
- smartSECTION® Geologic Software
- Data Management Services

Largest
North American
Well Log Data
Coverage

A2D Technologies
888-LOG-LINE
www.a2d.com



A TGS-NOPEC Company



KANSAS GEOLOGICAL SOCIETY

BULLETIN

Volume 79 Number 6

November—December 2004

CONTENTS

5	Society Meetings	13	KGF Tape Reviews
6	Editor's Page	17	From The Manager's Desk
7	President's Letter	20	Kansas Geological Foundation
9	Critter Contest	21	KGF Memorials
10	KGS Committee Chairmen	24	Exploration Highlights
12	Member Profile	26	Professional Directory
14	Meet The Candidates	27	Advertisers' Directory

ON THE COVER

Featured in this issue is a profile of Willis Nigh and photos from the KGS Annual Shooting Tournament.

This issue also features the candidates running for KGS office 2005.

The KGS *Bulletin* is published bi-monthly by the Kansas Geological Society, with offices at 212 North Market, Wichita, Kansas 67202 Copyright ©1993, The Kansas Geological Society. The purpose of the *Bulletin* is to keep members informed of the activities of the Society and to encourage the exchange and dissemination of technical information related to the Geological profession. Subscription to the *Bulletin* is by membership in the Kansas Geological Society. Limited permission is hereby given by the KGS to photocopy any material appearing in the *KGS BULLETIN* for the non-commercial purpose of scientific or educational advancement. The KGS, a scientific society, neither adopts nor supports positions of advocacy, we provide this and other forums for the presentation of diverse opinions and positions. Opinions presented in these publications do not reflect official positions of the Society.



KANSAS GEOLOGICAL SOCIETY

Established 1925

EDITOR

Wes Hansen 263-7313
e-mail bulletin@kgslibrary.com
whansen@southwind.net
Kimberly Dimmick-Wells—assistant
editor

STAFF

ADVERTISING

Kent Scribner
Stelbar Oil Corp. 264-8378

PROFILES/MEMORIALS

Robert D. Cowdery
Consultant 267-9030

EXPLORATION HIGHLIGHTS

John H. Morrison, III
Independent O&G 263-8281

STATE SURVEY

Rex Buchanan
KS Geological Survey (785) 864-3965

SOCIETY NEWS

KGS Library 265-8676

EDITOR EMERITUS

Larry J. Richardson 262-8427

BOARD OF DIRECTORS

PRESIDENT

Thomas J. Hansen

PRESIDENT-ELECT

Alfred James, III

SECRETARY

Bryce Bidleman

TREASURER

Ernest R. Morrison

DIRECTOR

Timothy G. Pierce

DIRECTOR

R. D. "Gus" Messinger

DIRECTOR

Philip M. Knighton

ADVISOR

Chuck Brewer

ADVISOR

Morris Korphage

A. A. P. G. Delegates

Alan DeGood 2003
Robert Cowdery 2003
Larry Richardson 2005

K.G.S. LIBRARY

PHONE 316-265-8676 FAX 316-265-1013
email: frontdesk@kgslibrary.com
Web: www.kgslibrary.com

KANSAS GEOLOGICAL SOCIETY TECHNICAL PROGRAMS

FALL SCHEDULE

Nov. 3	Rick Fritz— <i>“Presentation on the Red Fork”</i>
Nov. 10	Alan P. Byrnes, Kansas Geological Survey— <i>“Modeling Recovery From Kansas Mississippian & Lansing Kansas City Reservoirs-Why Reservoirs in the Transition Zone Produce More Oil & Water Than They Seem Like They Should”</i>
Nov. 17	Pat Gratton, President AAPG— <i>“Barnett Shale Play”</i>
Dec. 1	Jim Gibbs— <i>“Purchase of Producing Properties”</i>
Dec. 8	Meer Husain— <i>“Understanding Ground Water Arsenic Poisoning in the Bengal Basin”</i>
Dec. 15	Kirsten Nicholaysen, KSU— <i>“Title to be Announced”</i>

All technical meetings are held at 12:30 p.m. in the Bank of America Auditorium unless otherwise noted.

Note: For those geologists who need 30 points to renew their licenses, there will be a sign-in sheet at each presentation and also a certificate of attendance.

Hydrothermal Dolomite Symposium & Core Workshop

As an Explorationist looking for new plays, why you should care?

Monday, November 15, 2004 at The Green Center, Colorado School of Mines, 8 a.m. to 8 p.m.

What are hydrothermal dolomites? How do they form? What do they look like? Where do they occur? Good reservoirs? **AND HOW DO YOU FIND THEM??!!** Controversies & perspectives from the petroleum & minerals industries.

Invited Speakers Include

- **Jeff Hanor:** Basinal brines as dolomitizing fluids
- **Graham Davies:** The Hydrothermal Spectrum: Sedex and MVT mineralization and HTD reservoirs
- **David E. Eby and Thomas C. Chidsey:** A Tale of Two Dolomites (Syngenetic vs Hydrothermal) Mississippian Leadville Reservoirs at Lisbon field, Paradox Basin, Utah
- **Taury Smith:** Fault-controlled hydrothermal alteration processes and products
- **Murray Hitzman:** Hydrothermal Dolomitization in the Carboniferous of the Irish Midlands: Analogs and Implications for New reservoir types.
- **Stan Keith & Monte Swan:** Hydrothermal Petroleum: Answers from Linkages between HTD-hosted Petroleum Deposits and Mississippi Valley Type (MVT) Pb-Zn Deposits
- **Paul Bartos:** Hydrothermal Dolomite associated with Leadville-type Carbonate Pb-Zn-Ag-(Cu) Ore Bodies: Implications for Hydrocarbon Exploration

Plus Neil Hurley (Albion-Scipio), Tom Boreen, Hazel Barton, and Jay Gregg AND Posters with core from Canada, the Rockies, the mid-Continent, and the Irish Midlands to name a FEW places.

Pre-Symposium Field Trip, Sunday November 14, 2004

To Glenwood Caverns, led by Harvey DuChene and Hazel Barton

One-day trip by bus, includes lunch, cavern fee, and transportation: **limit 40.**

Hosted by: Rocky Mt Association Geologists and Society Economic Geologists, CSM Student Chapter
With PTTC Rocky Mt Region and Rocky Mt Section-SEPM

For Online Registration or a mail in fax in form visit: <http://www.rmag.org>

EDITOR'S PAGE



Dear KGS members and friends,

I was having writer's block, so I asked Rebecca to insert this "skinny" picture of me to help fill up my space. She also e-mailed a request from me to Larry Richardson to use this photo in the new KGS Directory that he is compiling. Those of you that fight the "battle of the bulge" know that lack of exercise and poor dietary habits are to blame. I have told several people that when it comes to sweets, I have the will power of a crack addict.

Betty and I plan a return trip to Hawaii next June. Several friends will join us on a cruise to 4 of the islands embarking from Honolulu. The cruise will also go to Fanning Island (the former Christmas Island) to comply with United States Maritime laws requiring a foreign country stop on cruises from U.S. ports that involve a ship of foreign registry. We will, of course, have to spend a week or so with the kids

on Oahu either before or after the cruise. I do not want to go on this trip looking like I do now. I really must get the resolve to lose the weight AGAIN!

Enough about me. This issue of the *Bulletin* focuses on the nominees for the KGS Board for 2005-2006. I want to thank the members of the nominating committee for a selection of fine candidates for these offices. My great thanks to those who were willing to run for these positions. Often times it is hard for many of the membership to commit the time necessary to serve the KGS. Please take time to review the candidates on pages 14-16 and cast your ballots promptly when you receive them in the mail.

The Annual KGS Shooting Tournament was a success. There were no injuries, as I was not in attendance. A list of the generous sponsors and the photo highlights are on pages 22 and 23.

Bob Cowdery continues to line up speakers for our technical meetings. Licensed geologists already know that his efforts really help each of us to get the necessary credits for license renewal. Please sign-up for credit each time you are able to attend. Some members were notified of an audit of their CEU's recently. Each of us is responsible for documenting our credits each renewal period.

Please mark your calendars for the Annual KGS Banquet on January 28, 2005 at the Wichita Petroleum Club.

On behalf of the KGS staff, I wish each of you a safe and happy Thanksgiving, Merry Christmas or Happy Hanukah and a prosperous and Happy New Year.

Bye for now,

Wes

PRESIDENT'S LETTER



The end is in sight
For all to delight
My term as President
Will end at midnight
December 31, 2004

Next in line is Fred James
Who will take over the reins
He begins 2005 in the black
KGS is thriving and climbing back

55 dollar oil
Has lessened the toil
So at the end of my tour
The coffers of the KGS are a bit more full
And that is no bull

Thanks to the KGS board
This year has been a breeze
Also, to our boss Ms. Radford
Who does her job with ease

The Walter's Digital Library is up and running
Thanks to the vision of members among us
Who donated their time so we could change
Like those geologists before who wanted more
Made us blink and made us think

Thanks to all
Who answer the call
To serve the KGS
And make us the best

Don't forget to mentor
So those after us will do better
Pass on what you know
Before your 6 feet below

A special thanks to Cowdery, Bob
For his excellent job

Here is to Fred and his new crew
And to all of you
It has been fun
So should it end on a pun

No it is not
Saying no more
Is a chore

Will it end
Yes it will
Should we end
Or should we begin

On second thought
Don't get distraught

Thanks for the memories

- Tom Hansen



Library Holiday Hours

The KGS Library will be closed:
Nov. 24th & 25th
Dec. 24th
Dec. 31st

Happy Holidays To All!!!

Established 1926



WESTERN KANSAS

EASTERN COLORADO
OKLAHOMA PANHANDLE

SOUTHERN NEBRASKA

9 Drilling Rigs



10 Well Servicing Rigs
& Roustabout Services

For contract information:

For contract information:

Mindi Whyte
Drilling Department
316-858-8671 (Direct Line)
250 N. Water, Suite 300
Wichita, KS 67202

Alan Hayes
Well Service Supervisor
785-421-2102
East Highway 24
Hill City, KS 67642

ABERCROMBIE RTD, INC.

Rotary Drilling Contractor

Operating 4 Rigs in Western Kansas & NW Oklahoma

150 N. MAIN SUITE 801
WICHITA, KANSAS 67202-1383
(316) 262-1841



GREENSBURG OILFIELD SERVICES

P.O. Box 816
Greensburg, KS 67054

- * Hot oil treating
- * Paraffin removal
- * High pressure pumps
- * Oilfield tank cleaning
- * Power washing
- * Fresh and salt water hauling
- * Bulldozers
- * Motor grader
- * Vacuum Truck
- * Steamer
- * Fully Insured
- * Work Guaranteed

TOLL FREE 800-794-7806
Greensburg, KS • 316-723-2112
Pratt, KS • 316-672-6044
Great Bend, KS • 316-793-9790



Lockhart Geophysical Company

Call (303) 592-5220 FAX (303) 592-5225
Or E-mail lockden@xpert.net

2D & 3D Seismic Acquisition
Vibroseis Specialists



JAPEX GDAPS-4 Distributed
System

We'll give you seismic excellence

PETROBASE The Digital Database for Kansas

- INCLUDES:
- All Wells in Central and Western Counties
 - Accurate Lat-Longs Tied to Digital Land Grids
 - PLUS Other Unique Features

The Most Complete and Extensively Edited Data Available!

Why Not Spend Your Time Generating Ideas?

Call Today for More Information!

Robert D. Dougherty, Geologist
P. O. Box 1065

Phone (316) 793-9055
Great Bend, Kansas 67530

or call Robert White, Jr. in Denver—(303) 781-5182

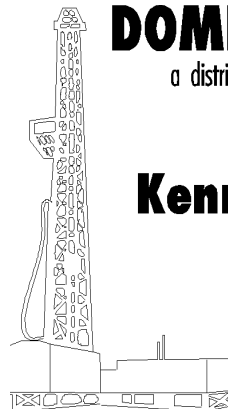
DOMBAR MUD Inc.

a distributor of Bariod Mud Products
GAS DETECTORS

Kenneth W. Dohm

Owner

Off: (316) 792-4337
Res: (316) 792-5536



6101 W. Tenth Gt. Bend, KS



Rotary Drilling Contractor

Steve E. McClain, *President*

P.O. Box 1006, Pratt, KS 67124 (316) 672-9508

MBC

WELL LOGGING & LEASING

UNMANNED GAS DETECTORS

MUD LOGGING

CERTIFIED INSTRUMENT TECH

SERVING THE KAN-O-TEC AREA
SINCE 1990

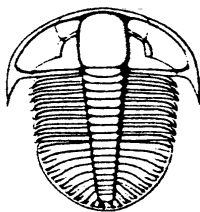
AUSTIN GARNER

MARLA GARNER

24-HOUR PHONE (316) 873-2953

MEADE, KANSAS

**TRILOBITE
TESTING** INC.



Can you name the critter?

Eleven Trucks Serving Kansas - Colorado - Oklahoma - Texas - Nebraska - Illinois
Slickline services using the same Alpine Electronic Pressure Guages as used on DST's
Back pressure testing (G1 & G2)
DST's

Shops located in:

Hays, KS

Scott City, KS

Pratt, KS 1-800-728-5369

Hugoton, KS FAX: 1-785-625-5620
trilobite@eaglecom.net

Clay City, IL

Surface Geochemistry

- Soils gas survey
- Real-time analysis
- Permitting accessing assistance
- Data reduction

Offices Worldwide

Phone: 316.944.5250

Email: kevin.hopkins@shawgrp.com



Shaw Environmental & Infrastructure, Inc.

12M022004D_1

CAN YOU NAME THE CRITTER?

Sponsored by Trilobite Testing, Inc.

Is your paleo up to date?

If you know the name of the trilobite, submit your guess to Wes Hansen at 316-263-7313 or via e-mail at bulletin@kgslibrary.com

Remember that Trilobite Testing is sponsoring your efforts, so be sure to thank Paul Simpson the next time that you see him.

***Bulletin* committee members and PhD's in Paleontology are prohibited from entering.**



3500 N. Rock Rd., Bldg. 800-B
Wichita, Kansas 67226

CALL!
John H. Beury III Phone: (316) 636-5552

Fax: (316) 636-5572

E-mail: paragon@parangongeo.com

We have entered the New Millennium
With Advance Technology!

“Shouldn’t you?”

I/O System Two
1,000 Channels and Beyond!
2D and 3D Seismic Recording
Designed to match your project demands
In cost and technology

Looking For Donations

To The KGS Core Hole Library

*If you have core hole drilling data
or seismic data that you would like
to donate to this project, please con-
tact Gus Messinger or Rebecca
Radford at the Kansas Geological
Society Library.*

316-265-8676

*This collection of data could prove
to be of great value to those who
are looking at prospects in Kansas.*

COMMITTEE CHAIRMEN

<u>Advertising</u>	Kent Scribner
<u>Advisory</u>	Morris Korphage Chuck Brewer
<u>Annual Banquet</u>	Marjorie Crane
<u>Bulletin</u>	Wes Hansen Kimberly Dimmick- Wells
<u>Computer</u>	
<u>Continuing Education</u>	Robert Cowdery
<u>Distinguished Awards</u>	Tim Pierce
<u>Directory</u>	Larry Richardson
<u>Environmental</u>	Steve Murphy
<u>Field Trip</u>	Larry Skelton
<u>Fishing Tournament</u>	Tim Pierce
<u>Future Plans</u>	
<u>Golf</u>	Jon T. Williams
<u>Historian</u>	Larry Skelton
<u>Investment</u>	Ernie Morrison
<u>Legislative</u>	Richard Moberly
<u>Library</u>	Roger Martin, Ted Jochems
<u>Membership</u>	Larry Friend
<u>Nomenclature</u>	John H. Morrison, III
<u>Picnic</u>	Kimberly Dimmick-Wells
<u>Public Relations</u>	Robert Cowdery
<u>Shooting Tournament</u>	Larry Richardson
<u>Technical Program</u>	Robert Cowdery
<u>Ticket Sales</u>	Bill Shepherd

KGS Library Open Late on Thursday Nights until 9:00 pm

This is an added benefit for :

- ◆ Geologists who have left the business to work elsewhere during downturns in the oil business
- ◆ Out of town members will now be able to maximize a trip to our library to do research, perhaps cutting a full day off of their visits

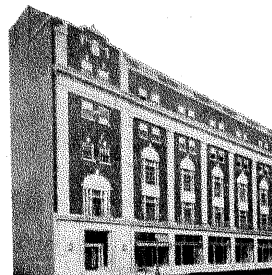
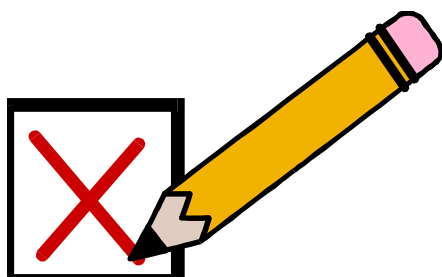
Remember to Vote

For KGS
Board Positions

Ballots are due by
December 1st, 2004

Make your vote
count.

No whining,
no complaining,
if you don't vote!!



Landmark Square

Headquarters for Oil & Gas Professionals

Newly restored second floor lobby

Space starting at 150 sq. ft.

Offices available with
Adjacent storage space
And freight elevator access

Convenient nearby parking

Steps away from the KGS Library

**Stan Wisdom,
Leasing Agent**

**212 N. Market
Ste. 420
Wichita, Kansas
67202**

**Phone and FAX
(316) 264-1084**

Help Wanted! **Integration Project**

**If you have *any* time you could
give to the Library, we have
projects that could move a little
faster with some
Expert Professional Geologists**

**Just a few hours a week would make
such a difference in helping to
integrate the small scale files into the
regular file cabinets.**

*To volunteer, please contact Ted Jochems
or Rebecca at the Library 265-8676*

MEMBER PROFILE: Willis Nigh



Willis Nigh

Willis is possibly not as well-known as some KGS members because he took a 22 year “hiatus” from the profession and industry to teach school, but nevertheless he has been an active explorationist both before and after this period

His story commences in 1929 when he was born in Great Bend, Kansas. His father was an agent- telegrapher for the railroad and his mother was a homemaker. Willis had an older brother, Kenneth, and an older sister, Betty, both now deceased.

He attended school at Penalosa, Kansas until his Junior year in high school when the family moved to Kiowa, Kansas. Willis graduated from Kiowa High School in 1947.

After attending Wichita University for one year, he joined the Air Force during the Korean War. He worked in Personnel while in the Air Force, and was stationed in Austin, Texas and Nashville, Tennessee.

After his discharge from the Air

Force, he returned to Wichita and enrolled once again at Wichita University. He graduated in 1956 with a degree in geology. His interest in geology, and the decision to pursue this field, after he returned from the service, was derived in part from an association with an uncle who was an operator in eastern Kansas, and the fact that Willis liked working outdoors. Some of his classmates at WSU were: Neil Sikes, Harvey, Gough J. C. Musgrove, Harold Steincamp, Bill Hamm, Gordon Keen, and H. J. Groves. During his years at WSU, Willis feels that he received good instruction and the opportunity to learn from Drs. Ver Wiebe, Tasch, and Berg.

While a student at WSU, Willis married Elaine Egy in 1953. Elaine and Willis have three children: Douglas , a consultant in corporate communications in St. Louis; Mindy, a pharmacist in Albuquerque; and Carrie who is a social worker at Wesley Hospital. Elaine and Willis also have 6 grandchildren , all boys.

In 2003, Elaine and Willis celebrated their “Golden Wedding Anniversary” with their family in Cuchara, Colorado. Cuchara is an area where Willis likes to go each summer to pursue his favorite recreational interest, fishing.

After his graduation from WSU in 1956, Willis worked for Rayflex. Then from 1958 to 1979 he taught school. A good friend, Tom Wright, persuaded Willis to return to exploration, and helped him develop his well-sitting skills.

Willis formed Southwind Petroleum Corp in 1981, and has retained that entity to the present. From 1985 until 1995 he worked for Ray Goodin and credits Ray for giving him invaluable insights into both the exploration and operation parts of the oil

and gas business. Willis still operates some gas wells in Kiowa County, and continues to be active in exploration and drilling.

Willis would still be a petroleum geologist if he had it to do over. From his own experiences as a petroleum geologist and perhaps from his school-teacher background, he would advise the young geologist just entering the field to continue to learn whether it be through course work, seminars, technical programs or just by reading technical material.

Willis, before he completely retires, wants to be satisfied with the results of his efforts and doesn't want to be forced to turn over his operations until he is ready.

KGF TAPE REVIEWS

NEW CD's

Rocky Mountain Association of Geologists (RMAG) 13 CD's that contain information from all of the guidebooks for the years 1937 thru 2001. If you are working on the Morrow, this would be a particularly good source of information.

Explore Energy, Geological Society of America, CD that explores all of the available energy types. Designed for grades 7—10.

SIPES Directory

The KGS Library has a copy of the SIPES 2004 Membership Directory on CD, available for viewing in the library.



Great Eastern Energy & Development Corporation

550 W. Texas, Suite 660, Midland, Texas 79701

Phone: 432/682-1178 Fax: 432/687-5725

E-mail: GEED2000@aol.com

EXPLORATION & PRODUCTION

Wildcat and 3-D Prospects

PRODUCTION EQUITY PARTNERS

Exploit PDP Equity to fund projects

Buy Interests – Retain Operations

CASH PROPERTY PURCHASES

Kansas-Texas-New Mexico-Rockies

Purchases from \$100,000 - \$25,000,000

Operated or Non-Operated

Working or Royalty Interests

Kevin O. Butler

President
Midland, TX.
432-682-1178

Bill Robinson

VP-Expl./Prod.
Midland, TX.
432-682-1178

MEET THE CANDIDATES

Vice President 2005 / President Elect 2006



Charles E. Brewer

Education: B.S. Geology, Fort Hays State University, 1982.

Professional Experience: President / Principal Geologist, Geotechnical Services, 1989—present; Emergency Response Coordinator, Nebraska Department of Environmental Quality, 1989; Consulting Geologist, 1987—1988; Staff Geologist, Hinkle Oil Co., 1985—1987; Geologist, Raymond Goodin Trust, 1983—1985; Field Technician, Geometrics, Inc. 1977—1983.

Professional Affiliations: KGS, KGF, KWBA, NWGA, Licensed in Kansas, Missouri, Nebraska and Texas.

KGS Board and Committees: KGS Board Advisor, Chairman Map Committee, Chairman Environmental Committee.



I. Wayne Woolsey

Education: . B.S. Business Administration, North Texas University, 1952; M.S., Geology, Texas A & M, 1958

Professional Experience: Woolsey Petroleum, Owner, 1970-Present; Zenith Drilling, 1968-1970; Mull Drilling, 1968-1969; Texaco, 1958-1968.

Professional Affiliations: AAPG, Society of Independent Earth Scientists (Wichita Chapter Chairman), KGS, KGF, West Texas Geological Society, Rocky Mountain Association of Geologists, Quails Unlimited, Ducks Unlimited, Served on the Wichita Crime Commission, Previous member of the Chamber of Commerce and Kansas Independent Oil and Gas Association.

KGS Board and Committees: Library Committee

MEET THE CANDIDATES

Secretary 2005 / Treasurer 2006



Dallas E. Donner

Education: B.S. Geology, Wichita State University, 1981.

Professional Experience: Mull Drilling Company Inc., 1981—1996. Consulting Geologist, 1996—present.

Professional Affiliations: AAPG, KGS, Kansas Licensed Geologist #200

KGS Board and Committees: KGS Director at Large, Future Plans Committee, Golf Committee.



Steve E. Stribling

Education: B.S. Geology, Wichita State University, 1983.

Professional Experience: Grand Mesa Operating, 1989—present; Consultant, 1986—1989; Raymond Oil Company, 1981—1986.

Professional Affiliations: KGS, AAPG, RMAG, Oklahoma City Geological Society, Licensed Kansas Geologist, Licensed Wyoming Geologist.

KGS Board and Committees:

MEET THE CANDIDATES

Board Member At Large 2005—2006



Harvey N. Gough

Education: University of Wichita, B.S. Geology, 1957.

Professional Experience: Independent Geologist, 1996—present; affiliated with Petro—Gas Midco Exploration, Inc., 1981—1996; Independent Geologist 1978—1981; Rains & Williamson Oil Co., Inc., 1967—1978; Rocket Drilling Co., Inc. 1959—1966; U.S. Army 1961—1962; Army National Guard, 6 months active service 1958—1959.

Professional Affiliations: AAPG, KGS, KGF, Petroleum Club Board 1986—1988.

KGS Board and Committees: KGS Golf Tournament



Bill C. Romig

Education: Hutchinson Jr. College, 1959; B.S. Petroleum Geology, Wichita University, 1962.

Professional Experience: Pickrell Drilling Co., 1996—present; Mustang Oil Co., 1982—1996; National Oil Co., 1972—1982; Petroleum Inc., 1972; O.A. Sutton Oil Co., 1962—1972.

Professional Affiliations: AAPG, KGS

KGS Board and Committees:

FROM THE MANAGER'S DESK



Dear Members,

Well, it is election time again. Not only on the national level, but right here at the KGS. Please look over the "Meet the Candidates" section of this *Bulletin* and give careful consideration of all the wonderfully qualified individuals who have accepted the run for office of the KGS.

I would like to take this opportunity to thank all of the candidates for running for office. I know everyone is very busy right now and we do appreciate those of you who have made a commitment to help run the KGS.

We had a wonderful turnout for the annual shooting tournament at Lynbrooke. See page 23 for some photo highlights of the day. Thank you's go to Larry Richardson and Rick Saenger for organizing such a good shoot. It could not have been a more perfect day for a shoot!

The next event coming up will be in the annual Banquet on January 28th. That is the last Friday in January. Please mark your calendars and plan to attend. We are planning a very fun and entertaining evening for everyone.

Everyone is very busy and we all love to see these "UP" times. The KGS library is doing very well this year and we appreciate all of the business. The four of us struggle to keep up with it at times, so if you have had to wait....

please understand, we are doing our best.

The scanning project is still moving along nicely. We have picked up several new Walters Digital Library memberships this past month and we have now completed a year of being in business, so renewals are coming up. Everyone who is using it seems to be very pleased with the ability to access data 24-7.

Since this is the last *Bulletin* of 2004, I want to take this opportunity to thank all of the KGS Board for their hard work and dedication to helping me keep your Society running smoothly. On the same note, thank you to all of the committee chairs and their committees. Without the cooperation and dedication of time from these individuals, our events and yearly activities would not be the success that they always are. Thank you also to everyone who has volunteered time to this library. We have made great strides this year and have accomplished a lot of projects. To all of you.....THANK YOU!

Holiday hours will be in effect the following dates. Thanksgiving, the library will be closed on Nov. 24 & 25th. Christmas, the library will be closed Friday, Dec. 24th and Friday, Dec. 31st in observance of New Years. Happy Holiday to all of you from all of us girls here at the KGS!

I am looking forward to 2005. Good luck to all of you who are running for office. I know we will have another successful year here at the KGS.

Respectfully,
Your Manager

Rebecca Radford



DIGITAL ARCHIVING NEWS

The following is a listing of where we are at on the scanning project:

- ◆ **Completion Cards**—West Ranges completed scanning and are on the Walters Digital Library
- ◆ **Plotted Geologist's Reports**— West Ranges—scanning completed and on the WDL.
- ◆ **Well Logs**— West Ranges 17 S—35 S on-line.
- ◆ **Laughlin-Simmons Cards**— West Ranges, scanned & on-line.
- ◆ **Typed Geologist's Reports**—West Ranges, 17S—35S; 16S –1W—20W
- ◆ **Drillier's Logs**—22S—35S on-line; 21S—1W –13W on-line
- ◆ **All other documents**— We will finish up the above documents and then start picking up other document types.

Keep checking on-line at:

www.waltersdigitallibrary.com

where the coverage area is updated regularly.

If you have any questions or concerns or suggestions.....call me.

- Rebecca Radford

The Robert F. Walters
DIGITAL



GEOLOGICAL
LIBRARY

Subscription Service NOW available !

We have a new web address

www.waltersdigitallibrary.com

Coverage area is growing every day!

Check Out Our New Pricing Structure & Find What Works Best For You

1-month trial period for \$250.00 (which can apply toward a 1 year subscription)

3-months for \$600.00 (designed for the person with a project in Kansas but does not necessarily need a full year's membership)

Regular Pricing of Digital Library Memberships:

- ◆ **KGS Library Members** = Can subscribe to the Walters Digital Library for **\$600.00 / year**
- ◆ **Non-KGS Library Members** = Can Subscribe for **\$1500.00 / year**

Call Now to Sign Up!!

Toll Free: 877-265-7300
Local: 263-2916

The Robert F. Walters
DIGITAL



GEOLOGICAL
LIBRARY

Think About It

"It is the mark of an educated mind to be able to entertain a thought without accepting it."

-- Aristotle (384-322 BC), Greek philosopher

"A positive attitude may not solve all your problems, but it will annoy enough people to make it worth the effort."

-- Herm Albright

"The game of life is a lot like football. You have to tackle your problems, block your fears, and score your points when you get the opportunity."

-- Lewis Grizzard

"If a man watches three football games in a row he should be declared legally dead."

-- Erma Louise Bombeck

Kansas Geological Foundation Items for Sale

Several sets of geological data and publications
**AAPG Bulletins Shale Shakers
Mountain Geologist Mining Engineering
Economic Geology**

- ◆ **Kansas Completion Card Sets**
- ◆ **Completion Card Cabinets**
 - ◆ **Microfiche Readers**
 - ◆ **Geology Books**
 - ◆ **Blue Line Printer**
- ◆ **Logs & Data from several other states**
 - ◆ **Framed Pool Maps**
 - ◆ **Much More**

**Inquire at KGS Library
316-265-8676**

**KGS Website
www.kgslibrary.com**

Check Out Our New Look!!

Emails:

Front Desk: frontdesk@kgslibrary.com

Bulletin Editor: bulletin@kgslibrary.com

**Website Administrator:
www.admin@kgslibrary.com**

Manager: manager@kgslibrary.com



It has only taken 54 Years to build the largest well log database in the world. Get the logs you need *when* you need logs!

Providing Hard Copy, LAS Files, and Raster Imaged logs with associated software, to the Oil and Gas industry.

Specialists in custom well log digitizing.

Riley Electric Log, Inc.

Contact:

**Karl Eberhart, Houston, TX, 1-800-483-5647
keberhart@rileyelectriclog.com**

**Russell Grasshoff, Houston, TX, 1-800-483-5647
rgrasshoff@rileyelectriclog.com**

**John Springman, Oklahoma City, OK, 1-800-592-1424
jspringman@rileyelectriclog.com**

<http://www.energysite.com> <http://www.rileyelectriclog.com>

KANSAS GEOLOGICAL FOUNDATION

Kansas Geological Foundation Services

The Kansas Geological Foundation provides the following services as a part of the organization's commitment to educate the public regarding earth science.

Speaker's Bureau - A list of speakers available to talk about various aspects of geology may be obtained by contacting Janice Bright at the KGS Library, 265-8676. This service is free to the public.

Videotape Library - The KGF maintains a videotape library focused primarily on the various fields of earth science. These tapes may be checked out without charge by the public. To obtain a list of tapes, please contact the KGS Library, 212 N. Market, Ste. 100, Wichita, KS 67202, or call Janice Bright at 265-8676.

New Slides on Energy from AAPG - 14 slides are available from the Speaker's Bureau on energy. Please contact Bob Cowdery at 267-9030 to check out the slides.

The Kansas Geological Foundation was founded in March of 1989 as a not-for-profit corporation under the guidelines of section 501(c)(3) of the tax code to provide individuals and corporations the opportunity to further the science of geology. It is dedicated to providing charitable, scientific, literary and educational opportunities in the field of geology for the professional geologist as well as the general public.

KGF can receive in-kind donations through which the donor may receive a tax deduction. Of equal importance, the KGF provides the financial resources to sort, process and file this data at the KGS library. If you have a donation to make, please contact the KGF at 265-8676.

Your tax-deductible membership donation helps to defray the cost of processing donations and to support public education programs about the science of geology. Annual membership begins at \$50.00 per year. Donations of \$100.00 or more are encouraged through the following clubs:

Century Club	\$ 100 to \$ 499
\$500 Club	\$ 500 to \$ 999
Millennium Club	\$1000 to \$5000
President's Club	\$5000 and over



Kansas Geological Foundation

Web Site: www.kgfoundation.org

**212 North Market
Wichita, Kansas 67202**

A not-for-profit educational and scientific corporation

GOALS:

- promote geology and earth science
- preserve geological records
- establish memorials and endowments
- support field trips and seminars
- financial aid and grants to students

PLEASE HELP SUPPORT THE FOUNDATION

KGF MEMORIALS

Name	Dc'd Dte	M'l Est.	Name	Dc'd Dte	M'l Est.
Dan Bowles	09/89	1990	Deane Jirrels	05/98	1998
John Brewer	10/89	1990	William G. Iversen	07/98	1998
Robert Gebhart	01/90	1990	Ann E. Watchous	08/98	1998
George Bruce	09/90	1990	W.R. "Bill" Murfin	09/98	1998
Ray Anderson, Jr.	11/90	1990	Donald L. Hellar	11/98	1998
Harold McNeil	03/91	1991	Joseph E. Rakaskas	01/99	1999
Millard W. Smith	08/91	1991	Charles W. Steincamp	02/99	1999
Clinton Engstrand	09/91	1991	Robert and Betty Glover	10/86	1999
M.F. "Ted" Bear	10/91	1991	Howard E. Schwerdtfeger	11/98	1999
James & Kathryn Gould	11/91	1991	W. W. "Brick" Wakefield	03/99	1999
Benton Brooks	09/92	1992	V. Richard Hoover	01/00	2000
Robert C. Armstrong	01/93	1993	Warren E. Tomlinson	01/00	2000
E. Gail Carpenter	01/93	1993	James A. Morris	01/00	2000
Nancy Lorenz	02/93	1993	Eric H. Jager	03/00	2000
Norman R. Stewart	07/93	1993	Kenneth W. Johnson	03/00	2000
Robert W. Watchous	12/93	1993	Dean C. Schaake	04/00	2000
J. George Klein	07/94	1994	Fred S. Lillibridge	05/00	2000
Harold C.J. Terhune	01/95	1995	Jerry A. Langrehr	07/00	2000
Carl Todd	02/95	1995	Clark A. Roach	07/00	2000
Don R. Pate	03/95	1995	Ralph W. Ruuwe	09/00	2000
R. James Gear	05/95	1995	Robert L. Slamal	02/01	2001
Vernon Hess	06/95	1995	Jerold E. Jespersion	06/01	2001
E. K. Edmiston	06/95	1995	William A. Sladek	06/01	2001
Jack Rine	08/95	1995	Harlan B. Dixon	06/01	2001
Lee Cornell	09/95	1995	Edward B. Donnelly	08/01	2001
John Graves	10/95	1995	Richard P. Nixon	02/02	2002
Wilson Rains	11/95	1995	Robert W. Frensley	12/01	2002
Heber Beardmore, Jr.	10/96	1996	Gerald W. Zorger	01/02	2002
Donald F. Moore	10/92	1997	Don L. Calvin	03/02	2002
Elmer "Lucky" Opfer	12/96	1997	Harold Trapp	12/02	2002
Gerald J. Kathol	03/97	1997	Claud Sheats	02/02	2002
Raymond M. Goodin	03/97	1997	Merle Britting		2002
James D. Davies	08/88	1997	Donald M. Brown	11/02	2003
R. Kenneth Smith	04/97	1997	Elwyn Nagel	04/03	2003
Robert L. Dilts	05/97	1997	Robert Noll	09/19	2003
Delmer L. Powers	06/72	1997	J. Mark Richardson	02/02	2004
Gene Falkowski	11/97	1997	John "Jack" Barwick	02/04	2004
Arthur (Bill) Jacques	1/98	1998	Benny Singleton	09/01	2004
Bus Woods	1/98	1998	Jay Dirks		2004
Frank M. Brooks	03/98	1998	Richard Roby	03/04	2004
Robert F. Walters	04/98	1998	Ruth Bell Steinberg		2004
Stephen Powell	04/98	1998	Gordon Keen	03/04	2004
			Lloyd Tarrant	05/04	2004
			Robert J. "Rob" Dietterich	08/96	2004

**The Kansas Geological Society Wishes To Thank The
Following Individuals & Companies For Their
Support Of The Annual Shooting Tournament**

**Acid Services
Allied Cementing
Big A Drilling
Buckeye Supply
Central Kansas Surveying
Diamond Testers
Dixon-Dearmore Oil Company
Duke Drilling
Eagle Creek Petroleum
ELI Wireline
Gressel Oil Field
Hesse Petroleum Company
Log Tech
MBC Well Logging
Mud-Co., Inc.
Mull Drilling Company
National Oilwell
NCRA
Norseman Drilling
Verne Dow and George Petersen
Ricketts Testing
Roger Martin, Consulting Geologist
The Rosel Company
Sunrise Oilfield Supply
Tidelands Geophysical
Trilobite Testing**

PHOTO HIGHLIGHTS FROM THE SHOOTING TOURNAMENT



Diana Edmiston



Doug Louis picking his prize, such decisions....



Brian Fisher



Larry Richardson, Doug Louis, Diana Edmiston



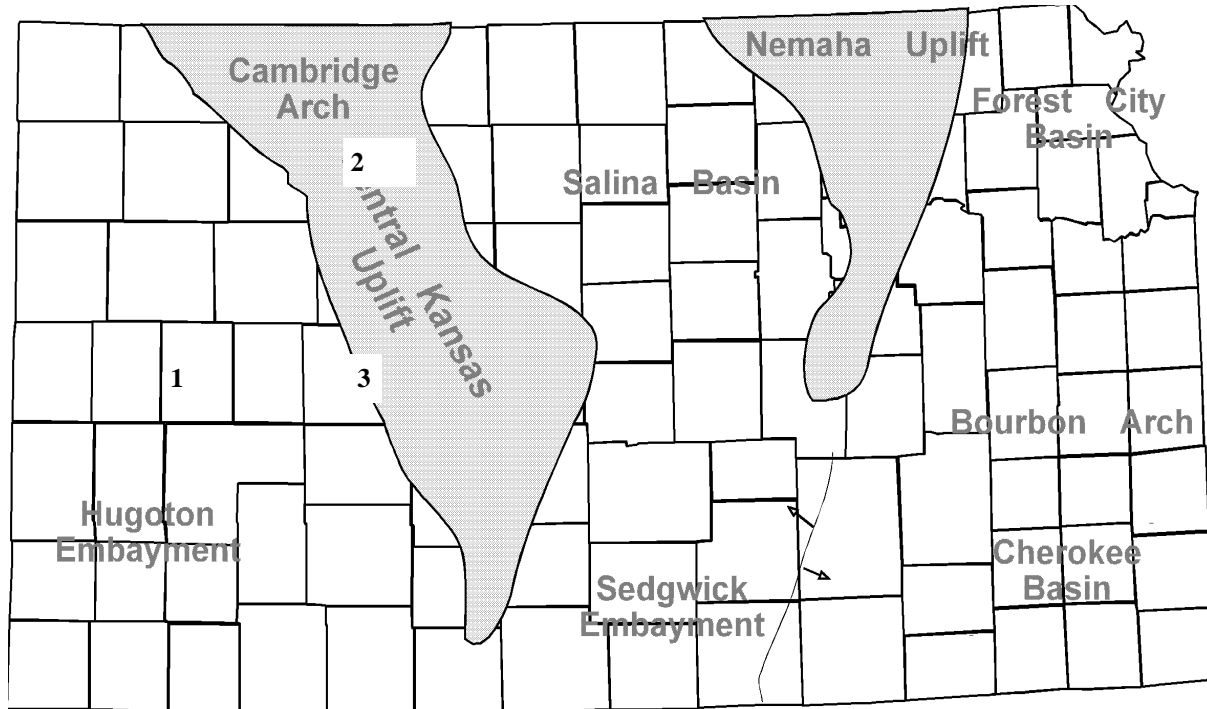
Rick Saenger



Seth Crisler picking his prize

EXPLORATION HIGHLIGHTS

By John H. Morrison, III
Independent Oil and Gas Service



(1) Ritchie Exploration Establishes New Oil Field (IOG Weekly News 09/20/04) - Ritchie Exploration, Inc., Wichita (KS), has produced new Cherokee Sand oil reserves at their Ramsey Trust #1 wildcat well in Scott County. Located 1-3/4 miles north of the city of Grigston, Kansas, in C N/2 S/2 of section 2-T18s-R31W, the new unnamed pool opener was placed on pump on July 2, 2004 at an undisclosed rate. Operator perforated the Johnson Zone member of the Cherokee formation to recover the oil deposits. L. D. Drilling was rotary drilling contractor. They bottomed the well at a total depth of 4600 ft. Ritchie's new oil field lies nearly 1-1/2 miles southwest of Lansing-Kansas City oil wells in the Manning Field which lies on the Scott County / Lane County line in section 1. Mississippian oil is being produced about 1-1/2 miles to the southwest of the new pool in the Manning Southwest Field in section 16. Closest Cherokee production lies over two miles to the northeast in the now abandoned Danny Field in section

25-T17s-R31W. In 1988, the Brungardt #1 pool opener produced 120 barrels of oil per day from the Cherokee at a depth between 4520 to 4538 ft.

(2) IA Operating Opens New Field in Graham County (IOG Weekly News 09/20/04) - Wichita-based IA Operating has discovered new Lansing-Kansas City oil reserves in Graham County at the Karmen #7-1, located in approximately W/2 NW/4 in section 7-T9s-R23W. The wildcat well is producing crude from perforations in the Lansing-Kansas City limestones. Daily potential is not available. The well was put on pump on August 6, 2004. Murfin Drilling's Rig #16 drilled the well to a total depth of 4050 ft. Discovery site is located 3/4-mile west of known Lansing-Kansas City oil production in the Jackson Branch Field. Productive zone lies around 3886 to 3891 ft. in depth at the nearby producers. IA Operating's new oil field has not been named to date. Field area is located 3-3/4

miles south and 1-1/2 miles east of Penokee, Kansas.

(3) Mull Drilling Company Has Discovery (IOG Weekly News 10/4/04) - Mull Drilling Company, Wichita (KS), has discovered new source of Cherokee oil reserves at the Schreiber Trusts #1-27 wildcat well in Ness County. Oil deposits were discovered at well site located in approximately SE NW NE in section 27-T16s-R23W, about 4 miles east of Ransom, Kansas. Duke Drilling's Rig #4 was contracted last June to drill the well to a rotary total depth of 4470 ft. Operator has perforated the Cherokee Sand section and placed the well on commercial production at an undisclosed rate effective July 1, 2004. The new oil field has not been named. Field area lies about 1-1/4 miles southeast of nearest known Cherokee production in the vicinity. The Osgood Field in sections 16 and 21 has produced oil from Cherokee zone at a depth ranging from 4416 to 4420 ft., as well as from Mississippian formation from 4442 to 4453 ft.

THE ON-LINE
BULLETIN IS NOW IN
PDF & HTML
FORMAT

Check out the complete KGS Bulletin on our web site
www.kgslibrary.com

A simple way to help your Society save money would be to let us know if you like viewing the Bulletin on line. This would allow us to reduce our mailing & printing costs of sending the Bulletin to every member.

We are glad to keep mailing it to you but if you are satisfied with reading on-line, please just let us know.
316-265-8676

Mark Your Calendars Now!

KGS Annual Banquet

Friday, January 28, 2004
Social Hour 5:30—6:30 PM
Dinner 7:00 PM


Wichita Petroleum Club

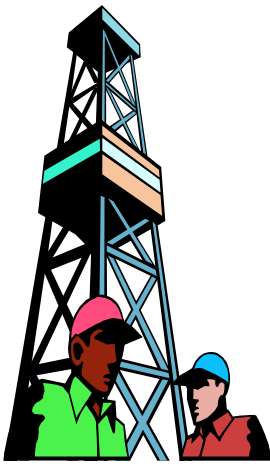
PROFESSIONAL DIRECTORY

Kirk Rundle
Consulting Geophysicist
*3D Seismic Design, Acquisition to Processing QC.,
 Interpretation and Analysis, Subsurface Integration*
 889 N. Maize Road, #206
 Wichita, Kansas 67206
 Office: 316-721-1421 Fax: 316-721-1843
 Home: 316-721-8962 Email:krundle@swbell.net

ROBERT J. GUTRU
Geologist
 300 Farmers & Bankers Bldg.
 200 East First Street
 Wichita, Kansas 67202
 Off: (316) 265-3402

ROGER L. MARTIN
*Independent/Consultant
 Petroleum Geologist*
 200 East First Street, Ste. 405
 Wichita, Kansas 67202
Office 316-267-0032/Cell: 316-250-6970
 Home: 316-682-0038
 Fax: (316) 264-8686

THE  **Rosel** COMPANY
"Specialist in Wire Line Completion & Digital Open-Hole"
 ♦ Open Hole ♦ Cased Hole
 ♦ Production Logging ♦ Pipe Recovery
 Liberal, KS 620-624-4941 Enid, OK580-544-0552
 Oklahoma City, OK 405-495-0101



ALFRED JAMES III
Petroleum Geologist
 Kansas - Colorado - Alaska
 200 West Douglas
 Suite 525
 Wichita, Kansas 67202
 Off: (316) 267-7592

WESLEY D. HANSEN
Consulting Geologist
 Well site Supervision
 Geologic Studies
 212 N. Market, Ste 257
 Wichita, Kansas 67202
 Off: (316) 263-7313
 Mobile: (316) 772-6188

M. Bradford Rine
Honorary Life Member—Kansas Geological Society
 Licensed Geologist—KS. #204
 Registered Professional Geologist—Wyo. # 189
 Certified Geologist—A.A.P.G. # 2647
 S.I.P.E.S. # 1584 S.P.E. #109833-4
 PROSPECT EVALUATION • PROSPECT GENERATION
 WELLSITE SUPERVISION • EXPERT TESTIMONY • OPERATIONS
 PROPERTY EVALUATION • RESERVOIR STUDIES
 DRILG./COMP. CONSULTATION
 Suite 415 Office: (316) 262-5418
 100 S. Main Fax: (316) 264-1328
 Wichita, KS 67202 Cell: (316) 772-6829

 Paul Gunzelman
 General Manager
RESOURCE MANAGEMENT INTERNATIONAL
 Personal, Estates, Trusts
 Appraisals, Revenue Tracking, Acquisitions
 (316) 634-6026 or pgunze@aol.com

MELLAND ENGINEERING
Petroleum Engineering & Geological Consulting
James E. Melland, P.E.
 Owner
 Cell Phone: (661) 319-5950
 Email: jemelland@sbcglobal.net
 121 W. Marlin, Ste. 202 McPherson, KS 67460

Promote Yourself!

Buy an AD space in our Bulletin

KGS Library Holiday Hours
Thanksgiving: Library closed Nov. 25 & 26
Christmas: Library closed Dec. 24th
New Years: Library closed Dec. 31st



Security for AAPG Members
& Their Families
Through Group Insurance

*Life
Health
Dental
Disability
And Supplemental Plans*

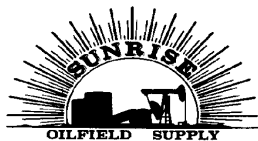
AAPG's
GeoCare Benefits Insurance Program
P. O. Box 9006
Phoenix, AZ 85068-9006
800-337-3140
E-mail: geocarebenefits@agia.com
www.geocarebenefits.com

Great Bend Ness City Medicine Lodge
(620) 793-5861 (785) 798-3843 (620) 886-5926



Acidizing Available at Medicine Lodge District

Russell Oakley
(785) 483-2627 (785) 672-3452



FULL LINE SUPPLY STORE

With Pump Shop
Offering New & Used
Pipe, Equip. & Fittings
Employee Owned

SALES OFFICES

Wichita, KS
800-777-7672

Great Bend, KS
316-792-3130
Mob: 316-786-4255

New Office
Hugoton, KS
620-428-6604

STORES

Ness City, KS
800-589-5733

El Dorado, KS
316-321-9323

Garden City, KS
877-976-1700

Spivey, KS
316-532-5261

McCook, NE
308-345-1542

ADVERTISING RATES FOR THE KGS BULLETIN

Personal Ads of Items for Sale: \$15.00 per Month

1/8 Page Ad: 6 Issues - \$300; 3 Issues - \$175;
1 Issue - N/A

1/4 Page Ad: 6 Issues - \$600
plus **KGS Directory Ad**

3 Issues - \$325
1 Issue - \$150

1/2 Page Ad: 6 Issues - \$1000 plus
KGS Directory Ad

3 Issues - \$540
1 Issue - \$225

Full Page Ad: 6 Issues - \$2000
plus **KGS Directory Ad**

3 Issues - \$1080
1 Issue - \$480

Professional Ad \$90 per year

ADVERTISERS' DIRECTORY

A2D Technologies	2
Abercrombie RTD, Inc.	8
Allied Cementing Company, Inc.	27
Dombar Mud Inc.	8
GeoCare Services AAPG	27
Great Eastern Energy & Development	13
Greensburg Oilfield Services	8
Kansas Geological Foundation	20
Landmark Square	11
Lockhart Geophysical	8
MBC	9
Murfin Drilling Company, Inc.	8
PARAGON Geophysical Services, Inc.	10
Petrobase	8
Professional Directory	24
Riley's	19
Shaw Environmental	9
Sterling Drilling Company	9
Sunrise Oilfield Supply	27
Trilobite Testing	9
Walters Digital Library	18

Kansas Geological Society & Library
212 North Market, Suite 100
Wichita, Kansas 67202

PRSRT STD
US POSTAGE
PAID
WICHITA KS
PERMIT NO 923

KGS BULLETIN
November-December 2004