



KANSAS GEOLOGICAL SOCIETY BULLETIN

Volume 79 Number 5

September-October 2004

IN THIS ISSUE...

12 Member Profile: I. Wayne Woolsey

15 Photos From KGS Picnic

THIS MONTH AT THE KGS

Sept. 15 Rick Saenger, Mull Drilling—
“Introduction to Shear Waves”
Sept. 22 Dr. Pete Stark, Denver IHS Energy—
“Petroleum Industry Perspectives 2004”
Sept. 29 William McBee, Tulsa, Oklahoma—
“Aulocogen Myth”

NEXT MONTH AT THE KGS

Oct. 6 Terrance Blackburn— *“New (U-Th)/He
Age Constraints on the Emplacement of
Kimberlite Pipes in Northeastern Kansas”*
Oct. 13 Greg Ohlmacher, Kansas Geological
Survey— *“Landslides and Landslide Hazard
Mapping in Northeastern Kansas”*
Oct. 20 Brian Casrdott— *“Overview of Uncon-
ventional Energy”*

You Focus on the
Prospects,
Leave the
Well Log Data
to A2D

Coming Soon:
smartSECTION 5.0



- LOG-LINE Plus!® Online Well Log Database
- Digital and Hardcopy Well Logs
- Well Log Digitization Services
- Workstation Ready Logs
- Pore Pressure Analysis and Purified Logs
- Flexible ADVANTAGE Data Subscriptions
- smartSECTION® Geologic Software
- Data Management Services

Largest
North American
Well Log Data
Coverage

A2D Technologies
888-LOG-LINE
www.a2d.com





KANSAS GEOLOGICAL SOCIETY

BULLETIN

Volume 79 Number 5

September—October 2004

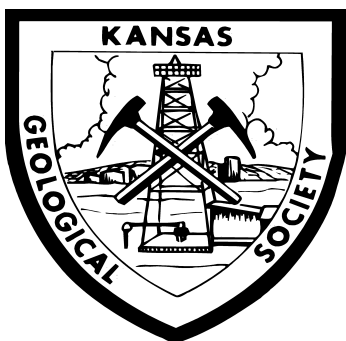
CONTENTS

| | | | |
|----|------------------------|----|------------------------------|
| 5 | Society Meetings | 14 | KGF Tape Reviews |
| 6 | Editor's Page | 17 | From The Manager's Desk |
| 7 | President's Letter | 20 | Kansas Geological Foundation |
| 9 | Critter Contest | 22 | Exploration Highlights |
| 10 | KGS Committee Chairmen | 24 | Professional Directory |
| 12 | Member Profile | 25 | Advertisers' Directory |

ON THE COVER

Featured in this issue are a profile of I. Wayne Woolsey and photos from the KGS Annual Picnic.

The KGS *Bulletin* is published bi-monthly by the Kansas Geological Society, with offices at 212 North Market, Wichita, Kansas 67202 Copyright ©1993, The Kansas Geological Society. The purpose of the *Bulletin* is to keep members informed of the activities of the Society and to encourage the exchange and dissemination of technical information related to the Geological profession. Subscription to the *Bulletin* is by membership in the Kansas Geological Society. Limited permission is hereby given by the KGS to photocopy any material appearing in the *KGS BULLETIN* for the non-commercial purpose of scientific or educational advancement. The KGS, a scientific society, neither adopts nor supports positions of advocacy, we provide this and other forums for the presentation of diverse opinions and positions. Opinions presented in these publications do not reflect official positions of the Society.



KANSAS GEOLOGICAL SOCIETY

Established 1925

EDITOR

Wes Hansen 263-7313
e-mail bulletin@kgslibrary.com
whansen@southwind.net
Kimberly Dimmick-Wells—assistant
editor

STAFF

ADVERTISING

Kent Scribner
Stelbar Oil Corp. 264-8378

PROFILES/MEMORIALS

Robert D. Cowdery
Consultant 267-9030

EXPLORATION HIGHLIGHTS

John H. Morrison, III
Independent O&G 263-8281

STATE SURVEY

Rex Buchanan
KS Geological Survey (785) 864-3965

SOCIETY NEWS

KGS Library 265-8676

EDITOR EMERITUS

Larry J. Richardson 262-8427

BOARD OF DIRECTORS

PRESIDENT

Thomas J. Hansen

PRESIDENT-ELECT

Alfred James, III

SECRETARY

Bryce Bidleman

TREASURER

Ernest R. Morrison

DIRECTOR

Timothy G. Pierce

DIRECTOR

R. D. "Gus" Messinger

DIRECTOR

Philip M. Knighton

ADVISOR

Chuck Brewer

ADVISOR

Morris Korphage

A. A. P. G. Delegates

Alan DeGood 2003
Robert Cowdery 2003
Larry Richardson 2005

K.G.S. LIBRARY

PHONE 316-265-8676 FAX 316-265-1013
email: frontdesk@kgslibrary.com
Web: www.kgslibrary.com

KANSAS GEOLOGICAL SOCIETY TECHNICAL PROGRAMS

FALL SCHEDULE

| | |
|----------|--|
| Sept. 15 | Rick Saenger, Mull Drilling— <i>“Introduction to Shear Waves”</i> |
| Sept. 22 | Dr. Pete Stark, Denver IHS Energy— <i>“Petroleum Industry Perspectives 2004”</i> |
| Sept. 29 | William McBee, Tulsa, Oklahoma— <i>“Aulocogen Myth”</i> |
| Oct. 6 | Terrance Blackburn— <i>“New (U-Th)/He Age Constraints on the Emplacement of Kimberlite Pipes in Northeastern Kansas”</i> |
| Oct. 13 | Greg Ohlmacher, Kansas Geological Survey— <i>“Landslides and Landslide Hazard Mapping in Northeastern Kansas”</i> |
| Oct. 20 | Brian Casrdott— <i>“Overview of Unconventional Energy”</i> |
| Nov. 3 | Rick Fritz— <i>“Presentation on the Red Fork”</i> |
| Nov. 10 | Open Date |
| Nov. 17 | Pat Gratton, President AAPG— <i>“Barnett Shale Play”</i> |
| Dec. 1 | Jim Gibbs— <i>“Purchase of Producing Properties”</i> |
| Dec. 8 | Meer Husain— <i>“Understanding Ground Water Arsenic Poisoning in the Bengal Basin”</i> |
| Dec. 15 | Karen Nicholaysen, KSU— <i>“Title to be Announced”</i> |

All technical meetings are held at 12:30 p.m. in the Bank of America Auditorium unless otherwise noted.

Note: For those geologists who need 30 points to renew their licenses, there will be a sign-in sheet at each presentation and also a certificate of attendance.

Hydrothermal Dolomite Symposium & Core Workshop

As an Explorationist looking for new plays, why you should care?

Monday, November 15, 2004 at The Green Center, Colorado School of Mines, 8 a.m. to 8 p.m.

What are hydrothermal dolomites? How do they form? What do they look like? Where do they occur? Good reservoirs? **AND HOW DO YOU FIND THEM??!!** Controversies & perspectives from the petroleum & minerals industries.

Invited Speakers Include

- **Jeff Hanor:** Basinal brines as dolomitizing fluids
- **Graham Davies:** The Hydrothermal Spectrum: Sedex and MVT mineralization and HTD reservoirs
- **David E. Eby and Thomas C. Chidsey:** A Tale of Two Dolomites (Syngenetic vs Hydrothermal) Mississippian Leadville Reservoirs at Lisbon field, Paradox Basin, Utah
- **Taury Smith:** Fault-controlled hydrothermal alteration processes and products
- **Murray Hitzman:** Hydrothermal Dolomitization in the Carboniferous of the Irish Midlands: Analogs and Implications for New reservoir types.
- **Stan Keith & Monte Swan:** Hydrothermal Petroleum: Answers from Linkages between HTD-hosted Petroleum Deposits and Mississippi Valley Type (MVT) Pb-Zn Deposits
- **Paul Bartos:** Hydrothermal Dolomite associated with Leadville-type Carbonate Pb-Zn-Ag-(Cu) Ore Bodies: Implications for Hydrocarbon Exploration

Plus Neil Hurley (Albion-Scipio), Tom Boreen, Hazel Barton, and Jay Gregg AND Posters with core from Canada, the Rockies, the mid-Continent, and the Irish Midlands to name a FEW places.

Pre-Symposium Field Trip, Sunday November 14, 2004

To Glenwood Caverns, led by Harvey DuChene and Hazel Barton

One-day trip by bus, includes lunch, cavern fee, and transportation: **limit 40.**

Hosted by: Rocky Mt Association Geologists and Society Economic Geologists, CSM Student Chapter
With PTTC Rocky Mt Region and Rocky Mt Section-SEPM

For Online Registration or a mail in fax in form visit: <http://www.rmag.org>

EDITOR'S PAGE

Dear KGS members and friends,

Hasn't this Kansas summer weather been strange? After a few hot days in May, we have experienced cooler and wetter weather over most of the state since that time. As a fat guy, I been lovin' it. In June I experienced 5 straight days of substantial rainfall in northern Morton County. Morton County probably hasn't had 5 non-straight days of rain in a 6 month period in the last 10 years. The bad thing about this cooler weather is it has been great for golf. Bad only because I have been working enough that I have not been able to enjoy playing.

The Annual KGS Picnic was held August 6th at the All Star Sports complex on west 21st street in Wichita. I believe that those who attended had a great time with good food and plenty of different activities for both children and adults. I do not know the total attendance figures, but I think that it was much too low. I chastised a couple of my peers about their 'no show.' I was told that they did not know when the picnic was going to be held. Some of our membership that receive the *Bulletin* on-line have learned they must actually log on and read it if they want to know what is happening. I am not griping at this people! I realize that we have all been busy working on prospects and working in the field. I mentioned to the Picnic Committee Chairperson, Kimberly Dimmick-Wells, that perhaps we should spend the extra money next year and mail a flyer to the regional membership reminding them of the Picnic. I want to express my great thanks to Kimberly and her co-workers for all of their hard work in putting this event together. A great big thanks to those companies and individuals who donated money to defray the costs of the Picnic. A list of those sponsors is on page 16 in this issue.

Betty and I were able to attend the picnic because I was able to return from a job the afternoon of the 6th. Although I was tired, I was glad we went. Betty has been lucky winning at bingo the last two years. She won the

first game of the evening with dinner for two at the River City Brewery in Old Town. I hope she takes me! The last game was a "blackout" game for the biggest prize of the evening. The prize was \$25.00 at the Scotch and Sirloin restaurant AND a night's stay at The Inn at the Park Bed and Breakfast on east Douglas in Wichita. When our illustrious KGS President, Tom Hansen, yelled "BINGO," I was deflated as I had only one remaining spot to fill on one of my cards. Betty looked at my missing number and said "I have that spot filled." Virginia Moreland had the same experience on her card. Each of us made our way up to the Bingo Czar's podium to challenge for the prize. All three cards proved to be valid, so a drawing was held to determine the winner. Sadly, I drew the highest number and took the prize from Tom and Virginia. In retribution, Tom had the KGS Board sentence me to Editor-for-life of the KGS Bulletin. Strangely enough, a 3-way tie occurred last year for the same prize with Linda Beauchamp winning the drawing.

I offer a big thank you to Geoff Radford and Paul Ramondetta for running the Bingo games. I want to convey a special thanks to the prize contributors on behalf of the membership.

Bob Cowdery has a great line-up of speakers scheduled for the Fall technical talks. Check the listing on page 5 and mark your calendars. These talks are an easy way to accumulate one's hours for license renewal.

The KGS Shooting Tournament is scheduled for Tuesday October 5 at Lynbrooke Sporting Clays Range. See the enclosed flyer for details. Any Clay Pigeon animal rights activists need to contact Larry Richardson to lodge their protests. I personally have never attended this event. Having my score of 0 out of 100 posted in the *Bulletin* would be much too embarrassing. Winners and sponsors will be listed in the November/December issue.

Bye for now,

PRESIDENT'S LETTER



The Kansas Geological Society picnic was well attended by the very young and the senior members (yours truly included in this group) of our society. As you well know it was held at the All Star Sports on West 21st street, as it has been for the past several years. We would have been “up the creek without a paddle” this year if it had been scheduled at Joyland. Remember the hot and humid evenings and sweat on your brow while you played bingo or chased your children around the park? Today our children chase our grand children around the sports center. The bingo game is held in an air-conditioned room and as we age it does make one feel better to “B” cool.

Paul Ramondetta and Geoff Radford kept everyone laughing (check out the website picture of Paul for a clue for what helped him be so funny) as they called B-4, I-42, etc. Thank you picnic committee (Kimberly Dimmick-Wells, Chellie Mazzullo, Brian Wilhite, Jane Sutherland & Wes Hansen) for a job well done and great prizes. Brother Wes Hansen won the big prize in bingo.

The technical talks begin in September. Thanks to Bob Cowdery the KGS has excellent speakers, including the President of the AAPG, for the fall noon programs. Check the KGS website for the list of dates, speakers, and subjects of technical talk programs being presented. The KGS noon “tech talk” gives everyone that is licensed as a geologist in the State of Kansas the chance to earn one CEU. Attend 30 noon luncheons during your 2-year license renewal period and you have full-filled the 30 CEU requirement. The best part of the deal that the talks

are free thanks to the hard work of Bob Cowdery.

Several KGS members have asked me if the KGS was every going to produce a new membership directory. Larry Richardson is working on a new membership directory. Keep watching for a publication date sometime in the future.

As the membership of the Kansas Geological Society advances in age, the present and future KGS boards will have decisions on how to best serve its membership. In order to gain a better insight into the age distribution of our members, how many KGS members would be willing to list their year of birth on the membership application? The year of birth would not be listed on the internet or directory, but would only be used for planning purposes.

Membership is increasing in the Walters Digital Library as data is added to the WDL. Scanning continues to progress towards the northern border of Kansas. Please continue to monitor the scanning project on the Kansas Geological Foundation website and join the WDL when your area has been scanned.

Until next time I leave you with some more quotes.

“The future is purchased by the present.” (Samuel Johnson)

“The will to win is worthless if you do not have the will to prepare.” (Steven H. Coogler)

“The wise man must remember that while he is a descendant of the past, he is a parent of the future.” (Herbert Spencer)

“The greatest obstacle to your success is probably you.” (Frank Tyger)

“If you mean to profit, learn to please.” (Winston Churchill)

“Progress comes from the intelligent use of experience.” (Elbert Hubbard)

“The young have aspirations that never come to pass, the old have reminiscences of what never happened.” (H. H. Munro)

— Tom Hansen

Established 1926



WESTERN KANSAS

EASTERN COLORADO
OKLAHOMA PANHANDLE

SOUTHERN NEBRASKA

9 Drilling Rigs



10 Well Servicing Rigs
& Roustabout Services

For contract information:

For contract information:

Mindi Whyte
Drilling Department
316-858-8671 (Direct Line)
250 N. Water, Suite 300
Wichita, KS 67202

Alan Hayes
Well Service Supervisor
785-421-2102
East Highway 24
Hill City, KS 67642

ABERCROMBIE RTD, INC.

Rotary Drilling Contractor

Operating 4 Rigs in Western Kansas & NW Oklahoma

150 N. MAIN SUITE 801
WICHITA, KANSAS 67202-1383
(316) 262-1841



PETROBASE The Digital Database for Kansas

- INCLUDES:
- All Wells in Central and Western Counties
 - Accurate Lat-Longs Tied to Digital Land Grids
 - PLUS Other Unique Features

The Most Complete and Extensively Edited Data Available!

Why Not Spend Your Time Generating Ideas?

Call Today for More Information!

Robert D. Dougherty, Geologist
P. O. Box 1065

Phone (316) 793-9055
Great Bend, Kansas 67530

or call Robert White, Jr. in Denver—(303) 781-5182

DUKE

DRILLING

COMPANY



ROTARY DRILLING CONTRACTOR

520 Hubbard
P.O. Box 823
Great Bend, KS 67530
(316) 793-8366

100 S. Main, Suite 410
Wichita, KS 67202
(316) 267-1331
FAX (316) 267-5180



GREENSBURG OILFIELD SERVICES

P.O. Box 816
Greensburg, KS 67054

- * Hot oil treating
- * Paraffin removal
- * High pressure pumps
- * Oilfield tank cleaning
- * Power washing
- * Fresh and salt water hauling
- * Bulldozers
- * Motor grader
- * Vacuum Truck
- * Steamer
- * Fully Insured
- * Work Guaranteed

TOLL FREE 800-794-7806

Greensburg, KS • 316-723-2112

Pratt, KS • 316-672-6044

Great Bend, KS • 316-793-9790

Lockhart Geophysical Company

Call (303) 592-5220 FAX (303) 592-5225
Or E-mail lockden@xpert.net

2D & 3D Seismic Acquisition
Vibroseis Specialists



JAPEX GDAPS-4 Distributed
System

We'll give you seismic excellence

DOMBAR MUD Inc.

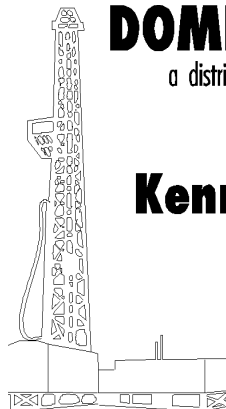
a distributor of Bariod Mud Products
GAS DETECTORS

Kenneth W. Dohm

Owner

Off: (316) 792-4337

Res: (316) 792-5536



6101 W. Tenth Gt. Bend, KS



Rotary Drilling Contractor

Steve E. McClain, *President*

P.O. Box 1006, Pratt, KS 67124 (316) 672-9508

MBC

WELL LOGGING & LEASING

UNMANNED GAS DETECTORS

MUD LOGGING

CERTIFIED INSTRUMENT TECH

SERVING THE KAN-O-TEC AREA
SINCE 1990

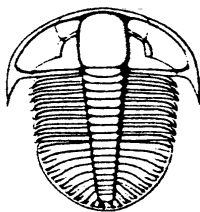
AUSTIN GARNER

MARLA GARNER

24-HOUR PHONE (316) 873-2953

MEADE, KANSAS

**TRILOBITE
TESTING** INC.



Can you name the critter?

Eleven Trucks Serving Kansas - Colorado - Oklahoma - Texas - Nebraska - Illinois
Slickline services using the same Alpine Electronic Pressure Guages as used on DST's
Back pressure testing (G1 & G2)
DST's

Shops located in:

Hays, KS

Scott City, KS

Pratt, KS 1-800-728-5369

Hugoton, KS FAX: 1-785-625-5620
trilobite@eaglecom.net

Clay City, IL

Surface Geochemistry

- Soils gas survey
- Real-time analysis
- Permitting accessing assistance
- Data reduction

Offices Worldwide

Phone: 316.944.5250

Email: kevin.hopkins@shawgrp.com



Shaw Environmental & Infrastructure, Inc.

12M022004D_1

CAN YOU NAME THE CRITTER?

Sponsored by Trilobite Testing, Inc.

Is your paleo up to date?

If you know the name of the trilobite, submit your guess to Wes Hansen at 316-263-7313 or via e-mail at bulletin@kgslibrary.com

Remember that Trilobite Testing is sponsoring your efforts, so be sure to thank Paul Simpson the next time that you see him.

Bulletin committee members and PhD's in Paleontology are prohibited from entering.



3500 N. Rock Rd., Bldg. 800-B
Wichita, Kansas 67226

CALL!

John H. Beury III Phone: (316) 636-5552

Fax: (316) 636-5572

E-mail: paragon@parangongeo.com

We have entered the New Millennium
With Advance Technology!

“Shouldn’t you?”

I/O System Two
1,000 Channels and Beyond!
2D and 3D Seismic Recording
Designed to match your project demands
In cost and technology

COMMITTEE CHAIRMEN

| | |
|-----------------------------|--|
| <u>Advertising</u> | Kent Scribner |
| <u>Advisory</u> | Morris Korphage Chuck Brewer |
| <u>Annual Banquet</u> | Marjorie Crane |
| <u>Bulletin</u> | Wes Hansen Kimberly Dimmick- Wells |
| <u>Computer</u> | |
| <u>Continuing Education</u> | Robert Cowdery |
| <u>Distinguished Awards</u> | Tim Pierce |
| <u>Directory</u> | Larry Richardson |
| <u>Environmental</u> | Steve Murphy |
| <u>Field Trip</u> | Larry Skelton |
| <u>Fishing Tournament</u> | Tim Pierce |
| <u>Future Plans</u> | |
| <u>Golf</u> | Jon T. Williams |
| <u>Historian</u> | Larry Skelton |
| <u>Investment</u> | Ernie Morrison |
| <u>Legislative</u> | Richard Moberly |
| <u>Library</u> | Roger Martin, Ted Jochems |
| <u>Membership</u> | Larry Friend |
| <u>Nomenclature</u> | John H. Morrison, III |
| <u>Picnic</u> | Kimberly Dimmick-Wells |
| <u>Public Relations</u> | Robert Cowdery |
| <u>Shooting Tournament</u> | Larry Richardson |
| <u>Technical Program</u> | Robert Cowdery |
| <u>Ticket Sales</u> | Bill Shepherd |

THE ON-LINE BULLETIN IS NOW IN PDF & HTML FORMAT

Check out the complete KGS Bulletin on our web site
www.kgslibrary.com

A simple way to help your Society save money would be to let us know if you like viewing the Bulletin on line. This would allow us to reduce our mailing & printing costs of sending the Bulletin to every member.

We are glad to keep mailing it to you but if you are satisfied with reading on-line, please just let us know.

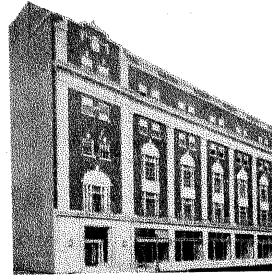
Looking For Donations

*To The KGS Core Hole
Library*

*If you have core hole
drilling data or seismic
data that you would like
to donate to this project,
please contact Gus
Messinger or Rebecca
Radford at the Kansas
Geological Society
Library.*

316-265-8676

*This collection of data
could prove to be of
great value to those who
are looking at prospects
in Kansas.*



Landmark Square

Headquarters for Oil & Gas Professionals

Newly restored second floor lobby

Space starting at 150 sq. ft.

Offices available with
Adjacent storage space
And freight elevator access

Convenient nearby parking

Steps away from the KGS Library

**Stan Wisdom,
Leasing Agent**

**212 N. Market
Ste. 420
Wichita, Kansas
67202**

**Phone and FAX
(316) 264-1084**

Help Wanted! Integration Project

**If you have any time you could
give to the Library, we have
projects that could move a little
faster with some
Expert Professional Geologists**

**Just a few hours a week would make
such a difference in helping to
integrate the small scale files into the
regular file cabinets.**

*To volunteer, please contact Ted Jochems
or Rebecca at the Library 265-8676*

MEMBER PROFILE: I. Wayne Woolsey



I. Wayne Woolsey

This is the profile of one of the most successful independent operators in the Kansas area and the route that brought him to that point.

This success story commences in the town of Gunter, Texas (near Sherman) in 1931 where Wayne was born to Floyd and Jessie Woolsey, who were farmers in the area. He has a younger brother, Douglas Rogers, who is a retired Bell Helicopter employee.

Wayne received all of his early education in Collinsville, Texas culminating in his graduation from Collinsville High School in 1948. After graduation he enrolled at North Texas State University (now the University of North Texas in Denton) and was a student there until 1950. From 1950 until 1953 he was a member of the U. S. Air Force, but also completed his degree in Business Administration at North Texas in 1952 during this period. During his tenure in the Air Force, he attained the rank of Staff Sergeant while serving as an instructor in a jet mechanic school.

In 1952, he married Joan Bryan, now deceased. They had two children: Cheryl Crisler, now living in Carrollton, Texas and Carla Haggard, residing in Denton, Texas. There is one granddaughter, Jennifer Haggard, age eight going on sixteen.

From 1953 until 1955, Wayne was a teacher at Petrolia Independent School, Petrolia, Texas. His first monthly pay check was \$127.00. For additional income he drove a school bus, refereed high school basketball games in Oklahoma and Texas and during the summer dug bell holes to repair gas pipeline leaks for Lone Star Gas Company. Although he was in the fast lane and having fun he made a decision to return to school and start a new career. In 1955 he went to Texas A & M University at College Station, Texas intending to enroll in Petroleum Engineering, but after receiving less than desired encouragement from the department head he went down the hall to interview with the Geological department and after receiving a warm welcome there, he enrolled. This fit with his plan to be a part of an industry and profession where he could earn a decent living. At Texas A & M, Wayne encountered plenty of school spirit and two professors, Dr. Horace Blank and Dr. Travis Parker who he considers really outstanding instructors. He confessed he found a couple of rather new unopened text books previously owned by a J. Fred Hambright.

Upon receiving his Master's Degree from Texas A & M in 1958, Wayne joined Texaco, working in Midland, Texas, Wichita, Kansas, and Columbus, Ohio in a number of positions including that of District Geologist in both Wichita and Columbus. While working for Texaco in Midland,

Wayne was involved in the drilling of a number of very challenging wells. In 1965, under his watch, Texaco drilled several 25,000' Ellenburger tests in the Delaware Basin. Technology had not evolved by this time to handle this extremely deep drilling. Teflon came into play replacing coatings on the wiring of logging and other tools that melted due to high temperatures at depths of 25,000'. Eventually Texaco overcame these problems and cut the original cost of 5 to 10 million dollars to drill a test to 1 to 2 million dollars. Another interesting assignment and part of a training program was he was given a budget to keep 40 rigs continuously turning to the right. He could draw from three districts for potential locations. If one of the forty locations reached total depth on a Friday, another rig would commence that same day. He received training with geophysical crews and with petroleum engineers in completion and reserve studies. Wayne believes that forgetting any criticism, Texaco was a great training ground for geologists. At Texaco he was pushed hard by Bill Russell, his immediate supervisor. This probably helped him in his later endeavors.

After ten years with Texaco, Wayne resigned to join Mull Drilling in Wichita. He only worked one year at Mull but has fond memories of Jay Mull, who he considers a character in the best sense of the word. Wayne says he was proud to have known Jay Mull. After he left Mull, he could still call on Jay for help and advice. Wayne then worked for Zenith Drilling in Kansas for almost one year. In his early years as an independent, Wayne found that if he needed advice, he could always go to Bus Wood, Bill Pielsticker, John Crane, Bernard Lounsbury and many others.

In 1970, Wayne formed a Joint Venture with Winston Eason (Eason Oil Company) to develop exploration prospects in

Kansas. The three year Woolsey-Eason Joint Venture was very successful resulting in 4BCF gas wells in Comanche county and a Damme field extension in Finney county with a quarter section producing over one million barrels and still producing today. After unsuccessful negotiations for a better sharing arrangement, Wayne formed a Joint Venture with The Maurice L. Brown company in 1974, that evolved into the Woolsey-Brown Company in 1975 and lasted through 1977. This was three years of truly higher education.

Wayne married Kay Anderson in 1973. Kay and Wayne have two sons: Marc Woolsey and Matt Woolsey both of whom reside in Wichita. Marc and his wife Hillary have one son and Matt and his wife Stephany have three daughters.

In 1978 Wayne formed Woolsey Petroleum Corporation which is one of the current Woolsey Companies. From 1971 through 2003, Wayne had drilled or participated in the drilling of over 580 wells with high success rates for both development and exploratory drilling. His company goal is to drill 20 to 30 wells per year during the next three years along with some production acquisitions. Wayne said that Texaco managers accused him of being a development geologist, but what he believed was that it required close detailed work, no stone unturned, to do the job right. His philosophy is to adhere to detail, look for reservoir first, then entrapment. He likes to set unattainable goals, then when he reaches them, set another unattainable goal.

He believes his success is due to good people working with him. His current staff includes KGS members Dean Pattison, Dennis Hedke, Brian Wilhite, Marc Summervill and Kimberly Dimmick-Wells plus two geo-techs completing their master's degrees in geology, Marge Crane and Daniel Sellers. Wayne believes that find-

ing oil and gas is only 40% of the battle, getting it out of the ground is the hard part, requiring experienced, knowledgeable and logical thinkers. His field personnel led by Carl Durr meet the requirements.

He belongs to a number of professional organizations, including: American Association of Petroleum Geologists; Society of Independent Earth Scientists, where he served as Wichita Chapter Chairman; Kansas Geological Society; Oklahoma City Geological Society; West Texas Geological Society; and Rocky Mountain Association of Geologists. In the Community, he has worked with both Quails Unlimited and Ducks Unlimited. He also has served on the Wichita Crime Commission and been a member of the Chamber of Commerce, the Kansas Independent Oil and Gas Association and Junior Achievement.

From his perspective as a major company employee and an independent, Wayne would offer this advice to the geologist entering the field: "Get a good working knowledge of his tools", ie, electric logs, drilling time, samples, cores, drillstem tests, seismic, etc. As to his career as a petroleum geologist, Wayne says "He has never regretted a minute of it."

It is obvious that Wayne really enjoys what he is doing and you have to believe him when he says that he is "too busy to retire".



KGF TAPE REVIEWS

NEW TAPES

Asteroids—Deadly Impact 60 minutes
National Geographic Video

This tape reviews the work of Dr. Eugene Shoemaker as he studied asteroid impacts of the past and warned the nation of potential impacts in the future. **This tape is restricted to private showing only.**

Genesis 35 minutes
Science Museum—Minnesota
Blue Ribbon American Film Festival Winner

The creation of the Earth 4 billion years ago is portrayed. Plate tectonics, continental drift, formation of rift valleys, subduction and other geologic processes are discussed.

Touring America's National Parks 65 minutes

20 of the most prominent National Parks are portrayed with some limited discussion of the geology of these parks. A great tape for anyone planning a vacation tour.

NEW CD'S

Publications Catalog—Wyoming State Geological Survey

GIS Solutions for Petroleum—ESRI Petroleum User Group

Electronically Speaking, A Presenter's Guide to Communications Using Powerpoint—AAPG

Field Seminars, 2004—AAPG

The Geologic Evolution of the Colorado National Monument—University of Colorado

The Saskatchewan Natural Gas Advantage—TransGas Limited

New DVD's

Solar Turbines—A Caterpillar Company

PICNIC PHOTO HIGHLIGHTS



The Kansas Geological Society wishes to express our thanks to the following companies and individuals who made the 2004 KGS Picnic possible:

*Abercrombie Energy, LLC
Acid Services, LLC
Allied Cementing Co., Inc.
American Energies Corp.
Bank of America
Big "A" Drilling, LLC
Britishsound.com
Brito Oil Company, Inc.
Deutsch Oil Company
Diamond Testing
Eagle Creek Corp.
Edmiston Oil Company, Inc.
E.L.I. Wireline Services
Falcon Exploration
Grand Mesa Operating
Gressel Oilfield Service, Inc.
Halliburton Energy Services
J. Fred Hambright, Inc.
Wesley D. Hansen
Hartman Oil Company, Inc.
Jerry Honas
Independent Oil & Gas
Ted Jochems
Knighton Oil Company
Landmark Resources, Inc.
Lario Oil & Gas Company
Log-Tech, Inc.
Lotus Operating Co., LLC
Mid-America Resources
Roger L. Martin
Sal & Chellie Mazzullo*

*McCoy Petroleum Corporation
McGinness & McGinness
Joe Moreland, Jr.
Ernie & Pat Morrison
Mud-Co/Service Mud, Inc.
Mull Drilling Company, Inc.
National Oilwell
NCRA
Northern Lights Oil Company
Palomino Petroleum, Inc.
Pauly & Company
Petroleum Management, Inc.
Phillips Exploration Company
Innes Phillips
Pickrell Drilling Company, Inc.
Range Oil Company
Raymond Oil Company, Inc.
Red Oak Energy, Inc.
J. Mark Richardson Family Trust
Brad Rine
Kirk T. Rundle
Sandberg Oil Company, Inc.
Bill Shepherd
Sterling Drilling Company
Sunrise Oilfield Supply Co.
Triloblite Testing
Val Energy, Inc.
Vess Oil Corporation
Vincent Oil Corporation
Wild Horse Resources, LLC
Woolsey Petroleum Corporation*



FROM THE MANAGER'S DESK

Dear Members,

Well if it isn't fall.....I can't believe it is here already. It will be time for elections soon (KGS as well as US) and that always keeps us hopping around here.

The KGS had a wonderful turnout for the annual picnic. I know some of you who are usually in attendance were not there because you are so busy drilling wells! That's the best reason to miss a KGS event! We did have a nice crowd and some new faces this year. We hope everyone had a great time. Wes & Betty Hansen were the winners of the BIG Bingo Prize. (See photo on page 27.) Please let Kimmerly Dimmick –Wells and the other committee members, as well as the sponsors, know how much they are appreciated for making this event a success.

The next event coming up is the KGS Shooting Tournament on October 5th. See the enclosed flyer for how to get signed up or check out the website. Hope we have a great turnout for this event. It is a wonderful day of being out in the country, enjoying the fall weather. Lynbrooke is a fantastic facility.

The scanning project is moving along nicely. We have now completed all of the Completion Cards (all are on-line) and we have also completed all of the Geologist's Reports (still getting some of those linked and put on-line). We have three people scanning well logs so they should be getting those on-line for us very soon. If you have just been waiting for the Walters Digital Library to reach an area that you are working, you should keep checking the web site: www.waltersdigitallibrary.com and stay posted on how far north we are. We will update the website progress report every two weeks or more. You can also call me here at the library and I will give you the latest update available.

Our Thursday night volunteer force has been working on getting the East Range Strip Logs filed and in better order. Sal & Chellie Mazzullo, Craig Bjork, Larry Friend, Kimberly Dimmick-Wells plus a few others from time-to

time are working very hard to make these improvements to our data in the library for all of you to use. Please give these folks a big THANK YOU if you see them or talk to them. These are things that have needed to be done for years and I really appreciate this group of individuals taking on this task!

As I said earlier, it is soon going to be time for elections of new KGS officers and KGF officers. I hope you all will exercise your right to vote when the time comes. It is important to have everyone's input and support when it comes to running this library and society. Watch the mail for the ballots and pay attention to the due dates. If you are asked to run, please say yes!

I had an "opportunity" to help raise some money for the Muscular Dystrophy Association this past month and I would like to thank all of you who donated to get me "bailed out of jail". We raised nearly \$800.00 for the MDA!

I hope everyone stays busy and all of your wells make production!

Respectfully,
Your Manager

Rebecca Radford



Think About It

A positive attitude may not solve all your problems, but it will annoy enough people to make it worth the effort.

- Herm Albright (1876 - 1944)

On account of being a democracy and run by the people, we are the only nation in the world that has to keep a government four years, no matter what it does.

- Will Rogers (1879 - 1935)

I wish people who have trouble communicating would just shut up.

- Tom Lehrer (1928 -)

Kansas Geological Foundation Items for Sale

Several sets of geological data and publications
AAPG Bulletins Shale Shakers
Mountain Geologist Mining Engineering
Economic Geology

- ◆ **Kansas Completion Card Sets**
- ◆ **Completion Card Cabinets**
 - ◆ **Microfiche Readers**
 - ◆ **Geology Books**
 - ◆ **Blue Line Printer**
- ◆ **Logs & Data from several other states**
 - ◆ **Framed Pool Maps**
 - ◆ **Much More**

Inquire at KGS Library
316-265-8676

KGS Website
www.kgslibrary.com

Check Out Our New Look!!

Emails:

Front Desk: frontdesk@kgslibrary.com

Bulletin Editor: bulletin@kgslibrary.com

Website Administrator:
www.admin@kgslibrary.com

Manager: manager@kgslibrary.com



It has only taken 54 Years to build the largest well log database in the world. Get the logs you need *when* you need logs!

Providing Hard Copy, LAS Files, and Raster Imaged logs with associated software, to the Oil and Gas industry.

Specialists in custom well log digitizing.

Riley Electric Log, Inc.

Contact:

Karl Eberhart, Houston, TX, 1-800-483-5647
keberhart@rileyelectriclog.com

Russell Grasshoff, Houston, TX, 1-800-483-5647
rgrasshoff@rileyelectriclog.com

John Springman, Oklahoma City, OK, 1-800-592-1424
jspringman@rileyelectriclog.com

<http://www.energisite.com> <http://www.rileyelectriclog.com>

KANSAS GEOLOGICAL FOUNDATION

Kansas Geological Foundation Services

The Kansas Geological Foundation provides the following services as a part of the organization's commitment to educate the public regarding earth science.

Speaker's Bureau - A list of speakers available to talk about various aspects of geology may be obtained by contacting Janice Bright at the KGS Library, 265-8676. This service is free to the public.

Videotape Library - The KGF maintains a videotape library focused primarily on the various fields of earth science. These tapes may be checked out without charge by the public. To obtain a list of tapes, please contact the KGS Library, 212 N. Market, Ste. 100, Wichita, KS 67202, or call Janice Bright at 265-8676.

New Slides on Energy from AAPG - 14 slides are available from the Speaker's Bureau on energy. Please contact Bob Cowdery at 267-9030 to check out the slides.

The Kansas Geological Foundation was founded in March of 1989 as a not-for-profit corporation under the guidelines of section 501(c)(3) of the tax code to provide individuals and corporations the opportunity to further the science of geology. It is dedicated to providing charitable, scientific, literary and educational opportunities in the field of geology for the professional geologist as well as the general public.

KGF can receive in-kind donations through which the donor may receive a tax deduction. Of equal importance, the KGF provides the financial resources to sort, process and file this data at the KGS library. If you have a donation to make, please contact the KGF at 265-8676.

Your tax-deductible membership donation helps to defray the cost of processing donations and to support public education programs about the science of geology. Annual membership begins at \$50.00 per year. Donations of \$100.00 or more are encouraged through the following clubs:

| | |
|-------------------------|------------------|
| Century Club | \$ 100 to \$ 499 |
| \$500 Club | \$ 500 to \$ 999 |
| Millennium Club | \$1000 to \$5000 |
| President's Club | \$5000 and over |



Kansas Geological Foundation

Web Site: www.kgfoundation.org

**212 North Market
Wichita, Kansas 67202**

A not-for-profit educational and scientific corporation

GOALS:

- promote geology and earth science
- preserve geological records
- establish memorials and endowments
- support field trips and seminars
- financial aid and grants to students

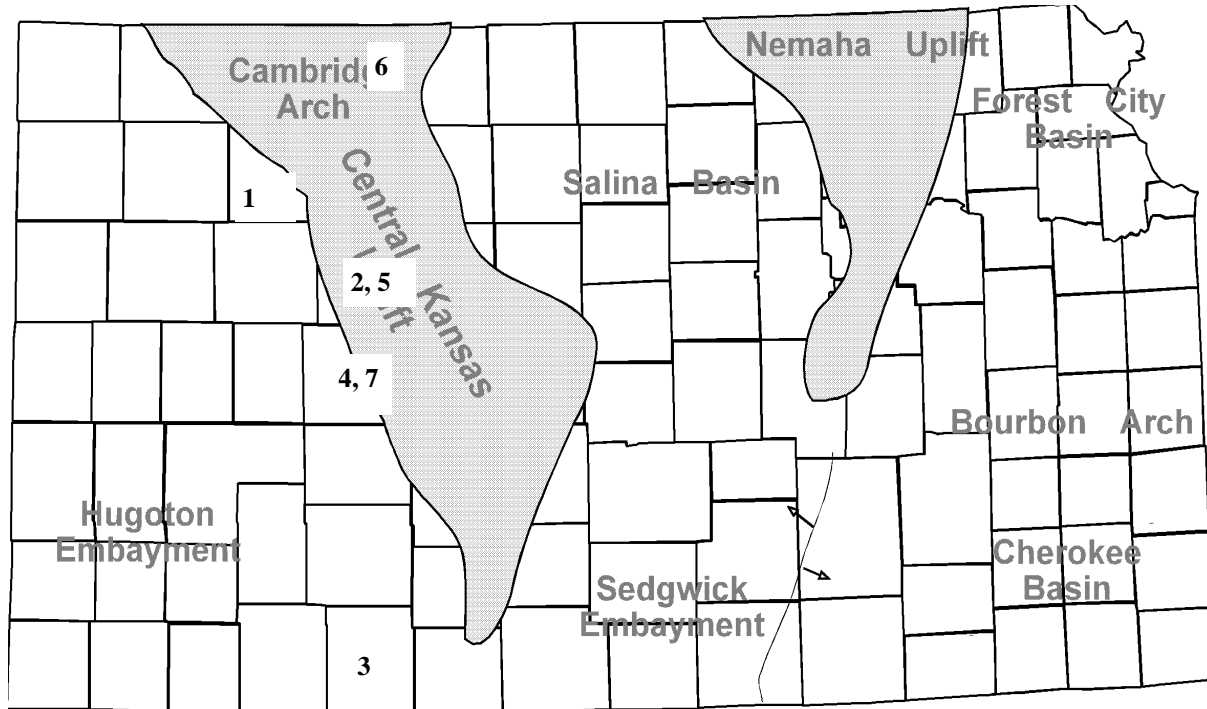
PLEASE HELP SUPPORT THE FOUNDATION

KGF MEMORIALS

| Name | Dc'd Dte | M'l Est. | Name | Dc'd Dte | M'l Est. |
|-----------------------|----------|----------|----------------------------|----------|----------|
| Dan Bowles | 09/89 | 1990 | Deane Jirrels | 05/98 | 1998 |
| John Brewer | 10/89 | 1990 | William G. Iversen | 07/98 | 1998 |
| Robert Gebhart | 01/90 | 1990 | Ann E. Watchous | 08/98 | 1998 |
| George Bruce | 09/90 | 1990 | W.R. "Bill" Murfin | 09/98 | 1998 |
| Ray Anderson, Jr. | 11/90 | 1990 | Donald L. Hellar | 11/98 | 1998 |
| Harold McNeil | 03/91 | 1991 | Joseph E. Rakaskas | 01/99 | 1999 |
| Millard W. Smith | 08/91 | 1991 | Charles W. Steincamp | 02/99 | 1999 |
| Clinton Engstrand | 09/91 | 1991 | Robert and Betty Glover | 10/86 | 1999 |
| M.F. "Ted" Bear | 10/91 | 1991 | Howard E. Schwerdtfeger | 11/98 | 1999 |
| James & Kathryn Gould | 11/91 | 1991 | W. W. "Brick" Wakefield | 03/99 | 1999 |
| Benton Brooks | 09/92 | 1992 | V. Richard Hoover | 01/00 | 2000 |
| Robert C. Armstrong | 01/93 | 1993 | Warren E. Tomlinson | 01/00 | 2000 |
| E. Gail Carpenter | 01/93 | 1993 | James A. Morris | 01/00 | 2000 |
| Nancy Lorenz | 02/93 | 1993 | Eric H. Jager | 03/00 | 2000 |
| Norman R. Stewart | 07/93 | 1993 | Kenneth W. Johnson | 03/00 | 2000 |
| Robert W. Watchous | 12/93 | 1993 | Dean C. Schaake | 04/00 | 2000 |
| J. George Klein | 07/94 | 1994 | Fred S. Lillibridge | 05/00 | 2000 |
| Harold C.J. Terhune | 01/95 | 1995 | Jerry A. Langrehr | 07/00 | 2000 |
| Carl Todd | 02/95 | 1995 | Clark A. Roach | 07/00 | 2000 |
| Don R. Pate | 03/95 | 1995 | Ralph W. Ruuwe | 09/00 | 2000 |
| R. James Gear | 05/95 | 1995 | Robert L. Slamal | 02/01 | 2001 |
| Vernon Hess | 06/95 | 1995 | Jerold E. Jespersion | 06/01 | 2001 |
| E. K. Edmiston | 06/95 | 1995 | William A. Sladek | 06/01 | 2001 |
| Jack Rine | 08/95 | 1995 | Harlan B. Dixon | 06/01 | 2001 |
| Lee Cornell | 09/95 | 1995 | Edward B. Donnelly | 08/01 | 2001 |
| John Graves | 10/95 | 1995 | Richard P. Nixon | 02/02 | 2002 |
| Wilson Rains | 11/95 | 1995 | Robert W. Frensley | 12/01 | 2002 |
| Heber Beardmore, Jr. | 10/96 | 1996 | Gerald W. Zorger | 01/02 | 2002 |
| Donald F. Moore | 10/92 | 1997 | Don L. Calvin | 03/02 | 2002 |
| Elmer "Lucky" Opfer | 12/96 | 1997 | Harold Trapp | 12/02 | 2002 |
| Gerald J. Kathol | 03/97 | 1997 | Claud Sheats | 02/02 | 2002 |
| Raymond M. Goodin | 03/97 | 1997 | Merle Britting | | 2002 |
| James D. Davies | 08/88 | 1997 | Donald M. Brown | 11/02 | 2003 |
| R. Kenneth Smith | 04/97 | 1997 | Elwyn Nagel | 04/03 | 2003 |
| Robert L. Dilts | 05/97 | 1997 | Robert Noll | 09/19 | 2003 |
| Delmer L. Powers | 06/72 | 1997 | J. Mark Richardson | 02/02 | 2004 |
| Gene Falkowski | 11/97 | 1997 | John "Jack" Barwick | 02/04 | 2004 |
| Arthur (Bill) Jacques | 1/98 | 1998 | Benny Singleton | 09/01 | 2004 |
| Bus Woods | 1/98 | 1998 | Jay Dirks | | 2004 |
| Frank M. Brooks | 03/98 | 1998 | Richard Roby | 03/04 | 2004 |
| Robert F. Walters | 04/98 | 1998 | Ruth Bell Steinberg | | 2004 |
| Stephen Powell | 04/98 | 1998 | Gordon Keen | 03/04 | 2004 |
| | | | Lloyd Tarrant | 05/04 | 2004 |
| | | | Robert J. "Rob" Dietterich | 08/96 | 2004 |

EXPLORATION HIGHLIGHTS

By John H. Morrison, III
Independent Oil and Gas Service



(1) Nor-West Kansas Oil, LLC Has Oil Discovery (IOG Weekly News 07/05/04) - New oil deposits have been discovered by Nor-West Kansas Oil, LLC, of Wakeeney (KS), at the Bixenman well in southwestern Sheridan County. Located in approximately W/2 E/2 E/2 in section 3-T10s-R29W, the wildcat well is on pump making an undisclosed amount of crude from the Lansing-Kansas City formation. Operator selected drill site located nearly 3/4-mile east of production in the W.C.C. South Field which has also produced LKC oil since 1984. The Bixenman well was drilled to a rotary total depth of 4530 ft. Pay in the W.C.C. South field comes from between 4000 to 4100 ft. Nor-West's new field discovery has not been named and is located 9-1/2 miles south and 5 miles west of Hoxie, Kansas.

(2) Hess Oil Company Opens New Oil Field (IOG Weekly News 07/05/04) - Hess Oil Company, McPherson (KS), has established a new unnamed oil field in Trego county that is located 4-1/4 miles north and 2-3/4 miles west of the city of Brownell.

The Linda #1, located in approximately S/2 N/2 SE in section 32-T15s-R22W, found new oil deposits about 3/4-mile south of recently discovered Cherokee oil deposits found by Wichita-based Grand Mesa Operating Company in section 29 that opened the Page Creek West Field earlier this year. Hess Oil has not released the producing formation or production volume at their site. However, the 4370 ft. deep well lies over 1/2-mile north of Hess Oil's Wanda #1, NE NE SE in section 6-T16s-R22W, Ness County, that was completed for 37 barrels of oil per day in July, 2002 and was credited with having added Cherokee production from 4321 to 4322 ft. as a new pay source in the Waring Field.

(3) Vess Oil Corp. Finals Clark County Stepout (IOG Weekly News 08/02/04) - Vess Oil Corporation of Wichita (KS) has added new Arbuckle oil reserves and expanded the boundaries of the Yesta Field with completion of their Berryman-Denton Unit #1, located in approximately C W/2 E/2 W/2 in section 12-T32s-R24W in Clark County. The Arbuckle formation is giving up an unknown amount of

crude from undisclosed perforations. The wildcat well was drilled in mid-April to a rotary total depth of 6780 ft. First production was started on May 21, 2004. Hole has been plugged-back to a depth of 6722 ft. Val Energy served as contractor. The well was drilled about 5/8-mile northeast of the one-well Yesta Field, where the Viola formation tested shows of oil. Enron Oil & Gas Company completed the well in January, 1999, but then plugged the well as non-commercial in April, 1999. No production history is available. Vess' well is also located 3/4-mile south of the one-well Old Treaty oil field where Arbuckle oil is currently being produced. Vess Oil established the Old Treaty Field with the completion of their Denton A-1, located in approximately SW NW SW in section 1-T32s-R24W. The well has produced over 36,000 barrels of oil since its discovery in August, 2003. Field area is situated about 5 miles north and 5-1/2 miles west of Ashland, Kansas.

(4) Pintail Petroleum, LTD Completes Discovery IOG Weekly News 08/02/04 - Pintail Petroleum, LTD, Wichita (KS), has established the new Franklin Northwest oil field in Ness County with the completion of the Dumler-RJ #1-24, spotted in approximately SE NE NE NW in section 24-T19s-R24W. The 4368 ft. deep wildcat well found oil deposits in the Cherokee Sands at an undisclosed depth. First production began on May 27, 2004 at site located 3-1/2 miles south and 1/2-mile west of Ness City, Kansas. The new strike is positioned about 3/4-mile northwest of known production in the multipay Franklin Field where the Marmaton, Cherokee and Mississippian zones have all produced some oil. No production results have been released by operator.

(5) Downing-Nelson Produces 80 BOPD at Trego Wildcat IOG Weekly News 08/23/04 - Independent oil producer Downing-Nelson Oil Company, of Hays (KS), is pumping between 70 to 80 barrels of oil per day at the L & T Dairy #1-3, located in approximately NW NE SW in section 3-T14s-R21W in Trego County. The wildcat well was drilled to an estimated 4000 ft. total depth and found crude oil deposits in the Lansing-Kansas limestones of the "C" and "I" zones at undisclosed depths. Discovery site lies 5/8-mile east of producing wells in the Kuppetz oil field that has produced oil from the LKC, Marmaton and Arbuckle formations since 1965. Downing-Nelson's new oil field remains unnamed at this time. Site is located 4-1/2 miles south and 4-1/4 miles west of Ellis, Kansas.

(6) Ritchie Exploration Finals Two New Discoveries IOG Weekly News 08/23/04 - Wichita independent Ritchie Exploration, Inc. has discovered two new oil fields in western Kansas. First, new Lansing-Kansas City oil reserves have been found at a wildcat well in Norton County, about 2-1/2 miles south and 6-1/2 miles east of the town of Lenora in north-central Kansas, near the Graham County line. The Goeken #1-35D, located in approximately C S/2 S/2 SE in section 35-T5s-R23W, was placed on production on July 3, 2004 at an undisclosed rate. Murfin Drilling tools were used to drill the well to a total depth of 3955 ft. The well lies nearly one mile northwest of the Kemper Field in Graham County, which Ritchie also established in 1989. The Kemper Field has made nearly 100,000 barrels of oil from the LKC formation. Ritchie's new field is named Norham East. Elsewhere, in Scott County, the Froebe #1-13D has been completed in the Cherokee and Johnson Zones for an unknown amount of oil production. The Manning Townsite Northeast pool opener is drilled to a total depth of 4608 ft. at location in approximately NE NW SE in section 13-T17s-R31W. L. D. Drilling served as contractor. First oil sales were commenced on May 25, 2004 at site located 1-1/2 miles south and 3-3/4 miles west of Healy, Kansas. The new reserves lie 1-1/4 miles northeast of the Manning Townsite Field, where the Marmaton and Cherokee formations have produced over 100,000 barrels of oil since 1985. Top of the Cherokee formation is around 4500 ft.


(7) Mull Drilling Company Opens New Oil Field IOG Weekly News 08/23/04 - Mull Drilling Company, Wichita (KS), has established the new Ries West oil field in Ness County with the successful completion of the Janke #1-5 well. Spotted in approximately N/2 NE of section 5-T18s-R22W, the 4266 ft. deep wildcat well is producing an unknown amount of crude oil from perforations in the Cherokee Sand formation as of June 7, 2004. Well site is located about 1-1/2 miles west of the Ries Field, where the Mississippian formation has given up oil. Closest known Cherokee oil production in the vicinity is found 1-1/2 miles to the north of the Janke lease in the Happy Hollow Field, where pay comes from a depth between 4200 to 4230 ft. The new oil field is located 3-3/4 miles north and 2-3/4 miles east of Ransom, Kansas.

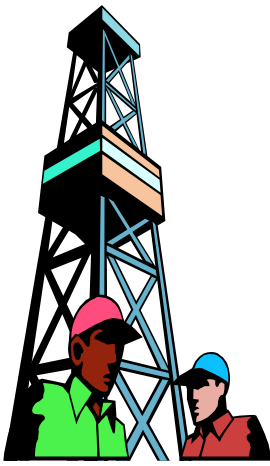
PROFESSIONAL DIRECTORY

Kirk Rundle
Consulting Geophysicist
*3D Seismic Design, Acquisition to Processing QC.,
 Interpretation and Analysis, Subsurface Integration*
 889 N. Maize Road, #206
 Wichita, Kansas 67206
 Office: 316-721-1421 Fax: 316-721-1843
 Home: 316-721-8962 Email:krundle@swbell.net

ROBERT J. GUTRU
Geologist
 300 Farmers & Bankers Bldg.
 200 East First Street
 Wichita, Kansas 67202
 Off: (316) 265-3402

ROGER L. MARTIN
*Independent/Consultant
 Petroleum Geologist*
 200 East First Street, Ste. 405
 Wichita, Kansas 67202
Office 316-267-0032/Cell: 316-250-6970
 Home: 316-682-0038
 Fax: (316) 264-8686

THE  **Rosel** COMPANY
"Specialist in Wire Line Completion & Digital Open-Hole"
 ♦ Open Hole ♦ Cased Hole
 ♦ Production Logging ♦ Pipe Recovery
 Liberal, KS 620-624-4941 Enid, OK580-544-0552
 Oklahoma City, OK 405-495-0101



ALFRED JAMES III
Petroleum Geologist
 Kansas - Colorado - Alaska
 200 West Douglas
 Suite 525
 Wichita, Kansas 67202
 Off: (316) 267-7592

WESLEY D. HANSEN
Consulting Geologist
 Well site Supervision
 Geologic Studies
 212 N. Market, Ste 257
 Wichita, Kansas 67202
 Off: (316) 263-7313
 Mobile: (316) 772-6188

M. Bradford Rine
Honorary Life Member—Kansas Geological Society
 Licensed Geologist—KS. #204
 Registered Professional Geologist—Wyo. # 189
 Certified Geologist—A.A.P.G. # 2647
 S.I.P.E.S. # 1584 S.P.E. #109833-4
 PROSPECT EVALUATION • PROSPECT GENERATION
 WELLSITE SUPERVISION • EXPERT TESTIMONY • OPERATIONS
 PROPERTY EVALUATION • RESERVOIR STUDIES
 DRILG./COMP. CONSULTATION
 Suite 415 Office: (316) 262-5418
 100 S. Main Fax: (316) 264-1328
 Wichita, KS 67202 Cell: (316) 772-6829

 Paul Gunzelman
 General Manager
RESOURCE MANAGEMENT INTERNATIONAL
 Personal, Estates, Trusts
 Appraisals, Revenue Tracking, Acquisitions
 (316) 634-6026 or pgunze@aol.com

MELLAND ENGINEERING
Petroleum Engineering & Geological Consulting
James E. Melland, P.E.
 Owner
 Cell Phone: (661) 319-5950
 Email: jemelland@sbcglobal.net
 121 W. Marlin, Ste. 202 McPherson, KS 67460

Promote Yourself!
 Buy an AD space in our Bulletin



Security for AAPG Members
& Their Families
Through Group Insurance

*Life
Health
Dental
Disability
And Supplemental Plans*

AAPG's
GeoCare Benefits Insurance Program
P. O. Box 9006
Phoenix, AZ 85068-9006
800-337-3140
E-mail: geocarebenefits@agia.com
www.geocarebenefits.com

Great Bend Ness City Medicine Lodge
(620) 793-5861 (785) 798-3843 (620) 886-5926



Acidizing Available at Medicine Lodge District
Russell Oakley
(785) 483-2627 (785) 672-3452



FULL LINE SUPPLY STORE

SALES OFFICES

Wichita, KS
800-777-7672

Great Bend, KS
316-792-3130
Mob: 316-786-4255

With Pump Shop
Offering New & Used
Pipe, Equip. & Fittings
Employee Owned

New Office
Hugoton, KS
620-428-6604

STORES

Ness City, KS
800-589-5733

El Dorado, KS
316-321-9323

Garden City, KS
877-976-1700

Spivey, KS
316-532-5261

McCook, NE
308-345-1542

ADVERTISING RATES FOR THE KGS BULLETIN

Personal Ads of Items for Sale: \$15.00 per Month

1/8 Page Ad: 6 Issues - \$300; 3 Issues - \$175;
1 Issue - N/A

1/4 Page Ad: 6 Issues - \$600
plus **KGS Directory Ad**

3 Issues - \$325
1 Issue - \$150

1/2 Page Ad: 6 Issues - \$1000 plus
KGS Directory Ad

3 Issues - \$540
1 Issue - \$225

Full Page Ad: 6 Issues - \$2000
plus **KGS Directory Ad**

3 Issues - \$1080
1 Issue - \$480

Professional Ad \$90 per year

ADVERTISERS' DIRECTORY

| | |
|------------------------------------|----|
| A2D Technologies | 2 |
| Abercrombie RTD, Inc. | 8 |
| Allied Cementing Company, Inc. | 25 |
| Dombar Mud Inc. | 8 |
| Duke Drilling Company | 8 |
| GeoCare Services AAPG | 25 |
| Great Eastern Energy & Development | 27 |
| Greensburg Oilfield Services | 8 |
| Kansas Geological Foundation | 20 |
| Landmark Square | 11 |
| Lockhart Geophysical | 8 |
| MBC | 9 |
| Murfin Drilling Company, Inc. | 8 |
| PARAGON Geophysical Services, Inc. | 10 |
| Petrobase | 8 |
| Professional Directory | 24 |
| Riley's | 19 |
| Shaw Environmental | 9 |
| Sterling Drilling Company | 9 |
| Sunrise Oilfield Supply | 25 |
| Trilobite Testing | 9 |

KGS Library Open Late on Thursday Nights

The KGS Library is open Thursday nights until 9:00 pm

These special hours benefit:

- ◆ Geologists who have left the business to work elsewhere during downturns in the oil business
- ◆ Out of town members will now be able to maximize a trip to our library to do research, perhaps cutting a full day off of their visits

**We generally chip in for pizza for dinner. (Or sometimes surprise potluck!)
Join us for the camaraderie**



Fort Hays State To Offer 1 Day Seminar For CEU's

Editor's Note: The following is a copy of an e-mail sent to Bob Cowdery from Ken Neuhauser of Fort Hays State University and forwarded to me.

Bob, Thought I would pass on info on my 1-day applied geophysics workshop this fall. It's the same one I've sent you info on before but you and anyone can access the course syllabus and enroll on-line by going to FHSU's webpage at www.fhsu.edu and click on the Virtual College button and then click the Online Syllabus button and finally click on the GSCI

475 CA Seminar in Geology - Applied Geophysics Workshop link. It will be held on Friday Oct. 15, 2004 from 8-5 pm. We usually end closer to 4 pm depending on the number of people. Right now we have no one enrolled. Two people who took it from Wichita called and wanted to know if we had a workshop this fall. The focus is on our cesium magnetometer, computer modeling, and ArcView GIS. I could change the focus to cover our electrical resistivity unit should they want that. Not sure if they can take the same "theme" over. Anyway, if you can, please spread the word. Thanks, Ken Department of Geosciences Fort Hays State University 785.628-5349 www.fhsu.edu/geo/neuhauser



Great Eastern Energy & Development Corporation

550 W. Texas, Suite 660, Midland, Texas 79701
Phone: 432/682-1178 Fax: 432/687-5725
E-mail: GEED2000@aol.com

EXPLORATION & PRODUCTION

Wildcat and 3-D Prospects

PRODUCTION EQUITY PARTNERS

*Exploit PDP Equity to fund projects
Buy Interests – Retain Operations*

CASH PROPERTY PURCHASES

*Kansas-Texas-New Mexico-Rockies
Purchases from \$100,000 - \$25,000,000
Operated or Non-Operated
Working or Royalty Interests*

Kevin O. Butler

*President
Midland, TX.
432-682-1178*

Bill Robinson

*VP-Expl./Prod.
Midland, TX.
432-682-1178*

David Shetler

*Acquisitions
Dallas, TX.
214-459-1214*

Mike Davignon

*Geologist
Bogue, Ks.
785-421-2346*



Our very own editor, Mr. Wesley Hansen & his better half, Betty.

WINNERS OF THE GRAND BINGO PRIZE

2004 Kansas Geological Society Picnic

Dinner at the Scotch & Sirloin & a night's stay at Inn at the Park

Kansas Geological Society & Library
212 North Market, Suite 100
Wichita, Kansas 67202

PRSR STD
US POSTAGE
PAID
WICHITA KS
PERMIT NO 923

KGS BULLETIN
September—October 2004