

Established 1925

KANSAS GEOLOGICAL SOCIETY

# BULLETIN

Volume 81 Number 6

Nov-Dec 2006

## IN THIS ISSUE

**Member Profile:  
Don Beauchamp**

**World Record  
Meteorite**

**Geo-Scenes**

## **2007-08 KGS Election Of Officers**

**Page 16**

**Vice-President / President**

*Ernest R. Morrison*

*Kent Roberts*

**Secretary / Treasurer**

*Rick Saenger*

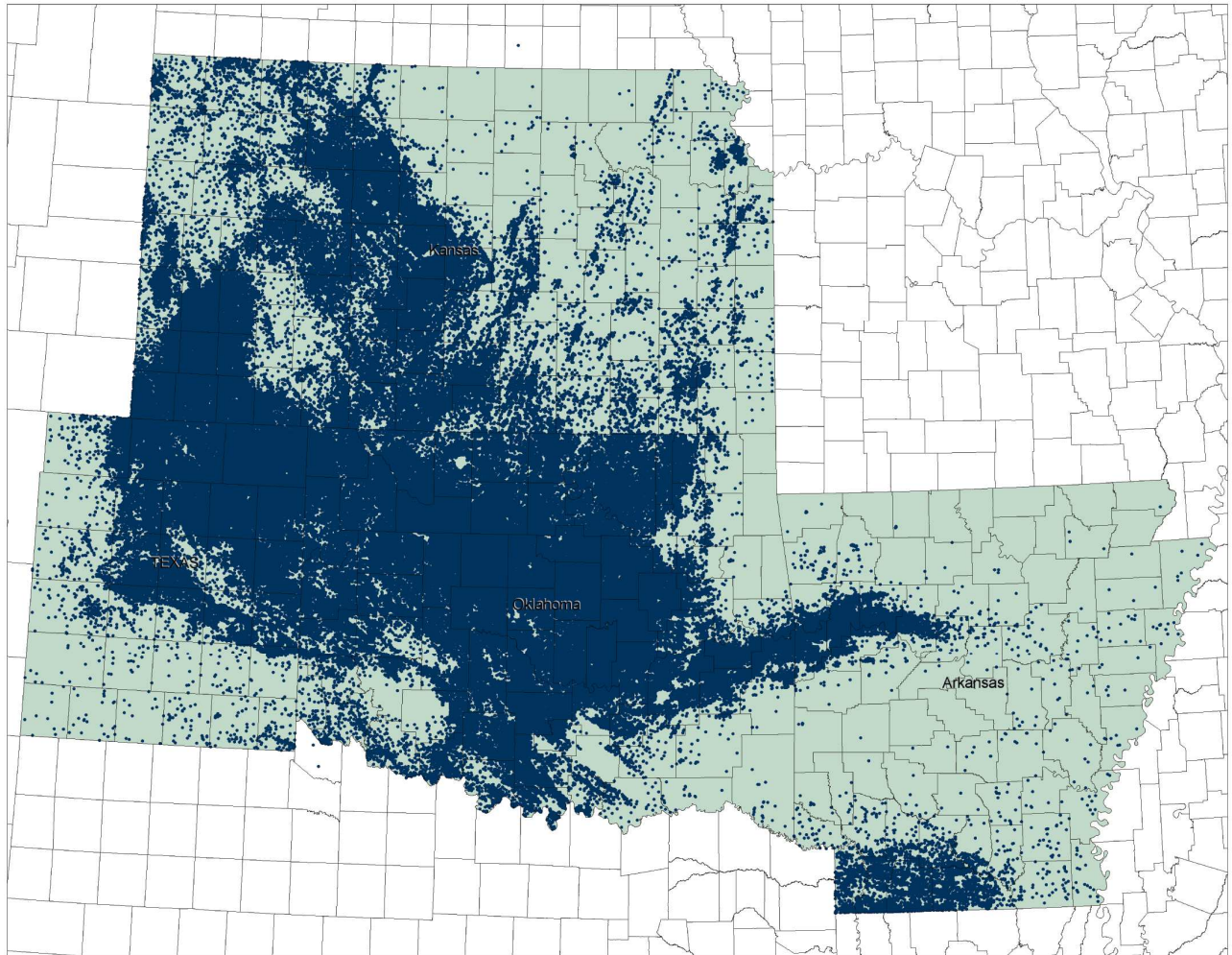
*David G. Withrow*

**Member at Large**

*Robert Stolzle*

*Marc R. Summervill*





Mid-Continent:  
**ARE YOU READY?**

Exploration and development activity is on the rise. As you seek to capitalize on the industry's momentum, don't let well log data get in the way. No company has removed more barriers between people and their well log data than A2D Technologies. With coverage of all the crucial wells in the Mid-Continent, North America and hydrocarbon provinces worldwide, A2D will get you ready for the opportunities to come.



Your Well Log Data Marketplace

[www.a2d.com](http://www.a2d.com)

# Table of Contents

---

## Geo-Scenes:

<b>Modern River Sands.....</b>	<b>11</b>
<b>Ancient Soils and Transgressive Marine Surfaces.....</b>	<b>12</b>
<i>by Sal Mazzullo: Technical Editor, Professor of Geology, WSU</i>	

## Features:

<b>Member Profile .....</b>	<b>14</b>
<i>Don Beauchamp, Wichita, Kansas</i>	
<b>Meet the Candidates.....</b>	<b>16</b>
<i>2006 KGS Election of Officers</i>	
<b>World Record Meteorite.....</b>	<b>19</b>
<i>The World's Largest Oriented Pallasite</i>	

## Departments & Columns:

<b>President's Letter .....</b>	<b>7</b>
<b>From the Manager.....</b>	<b>9</b>
<b>CD's &amp; DVD's .....</b>	<b>20</b>
<b>Professional Directory .....</b>	<b>22</b>
<b>Advertiser's Directory .....</b>	<b>20</b>
<b>KGS Tech Talks .....</b>	<b>6</b>
<b>Kansas Geological Foundation .....</b>	<b>26</b>
<b>Exploration Highlights .....</b>	<b>24</b>
<b>KGS Memorial.....</b>	<b>28</b>
<b>KGF Memorials.....</b>	<b>30</b>

### ON THE COVER:

It's that time of year again, time to make your voice heard about who will lead the KGS through the upcoming year. Be sure to cast your ballots by December 15. Profiles of the 2007-08 candidates can be found on pages 16 and 17.

---

### CALL FOR PAPERS

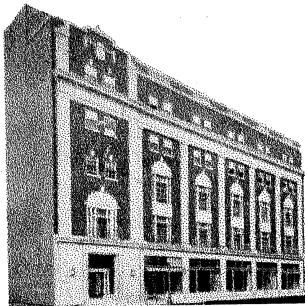
The Kansas Geological Society Bulletin, which is published bimonthly both in hard-copy and electronic format, seeks short papers dealing with any aspect of Kansas geology, including petroleum geology, studies of producing oil or gas fields, and outcrop or conceptual studies. Maximum printed length of papers is 5 pages as they appear in the Bulletin, including text, references, figures and/or tables, and figure/table captions. Inquiries regarding manuscripts should be sent to Technical Editor Dr. Sal Mazzullo at [salvatore.mazzullo@wichita.edu](mailto:salvatore.mazzullo@wichita.edu), whose mailing address is Department of Geology, Wichita State University, Wichita, Kansas 67260. Specific guidelines for manuscript submission appear in each issue of the Bulletin, which can also be accessed on-line at the Kansas Geological Society web site at <http://www.kgslibrary.com>

# ATTENTION

## KGS MEMBERS

*The 2007 KGS Banquet  
is scheduled for  
January 26th, 2007  
at the Petroleum Club*

**Mark your calendars and plan to attend**



### Landmark Square

### Headquarters for Oil & Gas Professionals

Newly restored second floor lobby

Space starting at 150 sq. ft.

Offices available with  
Adjacent storage space  
And freight elevator access

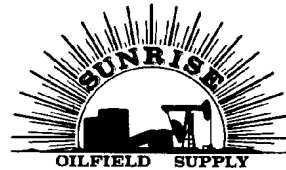
Convenient nearby parking

Steps away from the KGS Library

**Stan Wisdom,  
Leasing Agent**

**212 N. Market  
Ste. 420  
Wichita, Kansas  
67202**

**Phone and FAX  
(316) 264-1084**



### FULL LINE SUPPLY STORE

With Pump Shop  
Offering New & Used  
Pipe, Equip. & Fittings  
Employee Owned

### New Office

Hugoton, KS  
620-428-6604

### SALES OFFICES

Wichita, KS  
800-777-7672

Great Bend, KS  
316-792-3130  
Mob: 316-786-4255

### STORES

Ness City, KS  
800-589-5733

El Dorado, KS  
316-321-9323

Garden City, KS  
877-976-1700

Spivey, KS  
316-532-5261

McCook, NE  
308-345-1542

## MBC

WELL LOGGING & LEASING  
UNMANNED GAS DETECTORS  
MUD LOGGING  
CERTIFIED INSTRUMENT TECH  
SERVING THE KAN-O-TEC AREA  
SINCE 1990

AUSTIN GARNER

MARLA GARNER

24-HOUR PHONE (620) 873-2953

MEADE, KANSAS



## BOARD OF DIRECTORS

---

### PRESIDENT

Charles A. Brewer

### PRESIDENT-ELECT

Philip M. Knighton

### SECRETARY

Doug Davis

### TREASURER

Steve Stribling

### DIRECTORS

Bill Romig

Beth Isern

Fred James, III

### ADVISORS

Marty DuBois

Tom Hansen

## COMMITTEE CHAIRMEN

---

### Advertising

Kent Scribner

### Advisory

Thomas Hansen

### Annual Banquet

Marty DuBois

### Bulletin

Doug Davis

*Editor*

Marc Summervill

*Technical Editor*

Sal Mazzullo

### Continuing Education

Robert Cowdery

### Distinguished Awards

Fred James

### Directory

Larry Richardson

### Environmental

Kent Matson

### Field Trip

Larry Skelton

### Fishing Tournament

Randy Teter

### Future Plans

### Golf

Kevin Davis

### Historian

Larry Skelton

### Investment

Steve Stribling

### Library

Roger Martin

Ted Jochems

### Membership

Larry Friend

### Nomenclature

John H. Morrison, III

### Picnic

Chellie Mazzullo

### Public Relations

Robert Cowdery

### Shooting Tournament

Larry Richardson

### Technical Program

Robert Cowdery

### Ticket Sales

Bill Shepherd

## BULLETIN STAFF

---

### EDITORS

Marc Summervill: Editor

Woolsey Energy Corporation (316) 267-4379

msummervill@woolseyco.com

Sal Mazzullo: Technical Editor

salvatore.mazzullo@wichita.edu (316) 978-7211

### ADVERTISING

Kent Scribner

Stelbar Oil Corp. (316) 264-8378

### PROFILES/MEMORIALS

Robert D. Cowdery

Consultant (316) 267-9030

### EXPLORATION HIGHLIGHTS

John H. Morrison, III

Independent O&G (316) 263-8281

### STATE SURVEY

Rex Buchanan

KS Geological Survey (785) 864-3965

### SOCIETY NEWS

KGS Library

(316) 265-8676

### EDITOR EMERITUS

Wes Hansen

(316) 263-7313

## K.G.S. LIBRARY

---

PHONE 316-265-8676 FAX 316-265-1013

email: [frontdesk@kgslibrary.com](mailto:frontdesk@kgslibrary.com) or

Web: [www.kgslibrary.com](http://www.kgslibrary.com)

### LIBRARY MANAGER

Rebecca Radford 265-8676

[manager@kgslibrary.com](mailto:manager@kgslibrary.com)

## A.A.P.G. DELEGATES

---

Ernie Morrison 2008    Robert Cowdery 2006    Alan DeGood 2006

The KGS *Bulletin* is published bi-monthly by the Kansas Geological Society, with offices at 212 North Market, Wichita, Kansas 67202 Copyright 2006, The Kansas Geological Society. The purpose of the *Bulletin* is to keep members informed of the activities of the Society and to encourage the exchange and dissemination of technical information related to the Geological profession. Subscription to the *Bulletin* is by membership in the Kansas Geological Society. Limited permission is hereby given by the KGS to photocopy any material appearing in the KGS *BULLETIN* for the non-commercial purpose of scientific or educational advancement. The KGS, a scientific society, neither adopts nor supports positions of advocacy, we provide this and other forums for the presentation of diverse opinions and positions. Opinions presented in these publications do not reflect official positions of the Society.

**TRILOBITE  
TESTING INC**

Eleven Trucks Serving  
Kansas - Colorado - Texas  
Nebraska - Illinois

Slickline services using the same  
Alpine Electronic Pressure  
Guages as used on DST's

Back pressure testing (G1 & G2)

DST's

**1-800-728-5369**

**FAX: 1-785-625-5620**  
**trilobite @eaglecom.net**

SHOPS LOCATED IN:

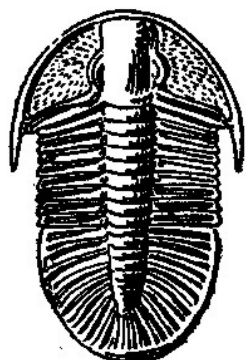
Hays, KS

Scott City, KS

Pratt, KS

Hugoton, KS

Clay City, IL



## ***CAN YOU NAME THE CRITTER?***

**Sponsored by Trilobite Testing, Inc.**

Is your paleo up to date?

If you know the name of the trilobite,  
submit your guess to Wes Hansen at  
316-263-7313 or via e-mail at  
manager@kgslibrary.com

Remember that Trilobite Testing is  
sponsoring your efforts, so be sure to thank  
Paul Simpson the next time that you see him.

**Bulletin committee members and PhD's in  
Paleontology are prohibited from entering.**

# **KGS Tech Talks**

## **November**

**8:** **Todd Aikins:**  
"A Geologist's View of Evolution"

**15:** TBA

**29:** **Mike Dealy,**  
**Kansas Geological Survey:**  
"What's so important about  
the Equus Beds"

## **December**

**6:** **Dr. Hongs Heng Cao, WSU:**  
"Geochemical Techniques in  
Petroleum Exploration"

**13:** **Dr. Rolfe Mandel:**  
"Kanorado Revisted: Results of  
Geoarchaeological Investigations in  
Northwestern Kansas"

**20:** **Larry Skelton:**  
"Gemstones"

*All KGS technical presentations  
are held at 12:30 p.m. in the Bank  
of America Auditorium unless  
otherwise noted.*

*Note: For those geologists who  
need 30 points to renew their  
licenses, there will be a sign-in  
sheet at each presentation and  
also a certificate of attendance.*

# President's Letter

---

*Dear Members,*

As the year 2006 comes to an end I look back on a very busy year for the Kansas Geological Society. It has been a fun and intriguing year as your President. The year got started with a bang as the Society purchased the Walters Digital Library from the Kansas Geological Foundation. With this purchase it will help insure the future of the Library in coming years.

In April I attended the annual AAPG Convention in Houston where I learned how fortunate we are in Kansas because our ancestors did such an outstanding job of putting together the KGS Library. That all of the geological data is located in one central place and that we had always been ahead of the times in what ever we did. This continues today as we develop new software to access all of the data from the Walters Digital Library. During the first quarter of 2007 the KGS will be introducing the new software for the users of the Walters Digital Library.

The lease on our Library was to expire at the end of 2006 and the future plans committee started in 2005 to investigate what would be the best long-term solution for our home. The Future Plans Committee recommended that we stay where we are at this time, but should look at ways in the future to finance a new building of our own. So we signed a new lease with the building owners. Since signing the new lease, there has been a lot of remodeling going on at the Library along with replacing the old carpet. I encourage you to stop by and see all the new changes. It looks great.

This year I wanted to try something we had not done in many years and that was to have a field trip to the Kansas Geological Survey in Lawrence. Marty Dubois came up with the name **October Geofest** for the program. It was a huge success and I have heard from many of the people that went that they would like to see it become an annual event. I want to thank Marty and the entire staff of the Survey for putting on such a good program. I also want to thank Bill Harrison for encouraging his staff to put on such a great program.

It is election time again for the Kansas Geological Society and the Nomination committee chaired by Fred James did an outstanding job of finding qualified candidates to run for office. I encourage each of you to cast your votes by December 1. I would also like to thank all the Committee Chairpersons who have volunteered countless hours to the Kansas Geological Society and also to all the Committee members who also volunteered many hours. I could not have made it through the year with out the support of the Board of Directors and my Advisors. We had a lot of things to deal with this year and with out their help we would not have been able to do what we did.

I also want to thank Rebecca and her staff. They do such an outstanding job of the operations of the Society and Library. There is so much that goes into running a business like this one.

I want to wish Phil and his Board in 2007 "Good Luck."

Again I want to thank everyone for giving me the opportunity to be your President for the year 2006. It was a fun year.

Respectfully Submitted,

*Chuck  
Brewer*

Chuck Brewer  
KGS President





Security for AAPG Members  
& Their Families  
Through Group Insurance

*Life  
Health  
Dental  
Disability  
And Supplemental Plans*

AAPG's  
GeoCare Benefits Insurance Program  
P. O. Box 9006  
Phoenix, AZ 85068-9006  
800-337-3140  
E-mail: [geocarebenefits@agia.com](mailto:geocarebenefits@agia.com)  
[www.geocarebenefits.com](http://www.geocarebenefits.com)

**ATTENTION!**

**INTERESTED IN  
BUYING CARD SETS,  
CABINETS, ETC.??**

*Larry Friend and Ted Jochems invite  
you to submit your e-mail address to an  
automatic notification list when such  
things come up for sale.*

**Contact: KGS Library**

**265-8676**



***Great Eastern Energy & Development Corporation***

550 W. Texas, Suite 660, Midland, Texas 79701  
Phone: 432/682-1178 Fax: 432/687-5725  
E-mail: [GEED2000@aol.com](mailto:GEED2000@aol.com)

**EXPLORATION & PRODUCTION**

*Wildcat and 3-D Prospects*

**PRODUCTION EQUITY PARTNERS**

*Exploit PDP Equity to fund projects  
Buy Interests – Retain Operations*

**CASH PROPERTY PURCHASES**

*Kansas-Texas-New Mexico-Rockies  
Purchases from \$100,000 - \$25,000,000  
Operated or Non-Operated  
Working or Royalty Interests*

**Kevin O. Butler**  
*President  
Midland, TX.  
432-682-1178*

**Bill Robinson**  
*VP-Exploration/Prod.  
Midland, TX.  
432-682-1178*



# From The Manager

---

*Dear Members,*

If you have not been in the library for the last month or so, you are in for a big surprise. As I write this letter, we have file cabinets moved away from walls for painters, we have booths temporarily torn down and moved out to make room for more file cabinets to be moved so we can get new carpet. We have torn out the Production Room to make more floor space to add more file cabinets in the West Ranges and will be putting production data back out on shelves. It has been very chaotic but will certainly be nice when it is all done.

All of the remodel is being done at no cost to the KGS by our new building owners, familiarly know as “the Minnesota Guys” but more formerly as Real Development, LLC. I know many of you have worried over the fact that our building was selling but I would have to report that they have been very good to the library and seem to be bending over backwards to keep the library here and happy.

As you notice in this issue, it is election time. I would like to take this opportunity to thank all of the candidates for accepting the run for office. In such busy times, I know it is difficult for any of you to volunteer what little time you have left and I hope your peers and colleagues will take a moment and thank you also. We again have an excellent group of people running for office so please be watching for your ballot and exercise your right to vote! Ballots will be coming out the first week of November and will be due back to the library by December 15th.

We had our last event of the year, the KGS shooting tournament on October 3rd and it was another lovely day, a little windy but still, everyone shot well and seemed to have a great time. Larry Richardson and crew got some really great prizes this year so everyone got a prize and then some were lucky and got more than one! Look for pictures in this issue.

Since this is the last issue of the year I would like to thank all of you for yet another wonderful year at the KGS. I want to especially thank Chuck Brewer and the rest of the KGS board for doing an excellent job of steering our Society and Library, making my job so much easier. As you elect new members to the board, let’s welcome Phil Knighton to his Presidential year and I know he will continue the good works of the board. I also want to thank all of the Committee Chairs for making all of the events fun and profitable for the KGS. And finally, I want to thank Marc Summervill for taking on the Editor position of this Bulletin and Kimberly Dimmick-Wells for serving in that position earlier this year. Getting the Bulletin put together and out the door is no simple task and we all need to appreciate the “volunteered time” to make it happen.

I wish you all a very wonderful holiday season and New Year!

Respectfully submitted,

*Rebecca  
Radford*

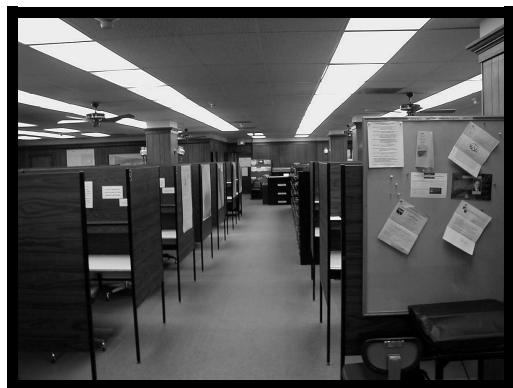
Rebecca Radford  
KGS Library Manager



**KGS Library Open Late on  
Thursday Nights  
until 9:00 pm**

**This is an added benefit for :**

- ◆ Geologists who have left the business to work elsewhere during downturns in the oil business
- ◆ Out of town members will now be able to maximize a trip to our library to do research, perhaps cutting a full day off of their visits



Nebraska

Kansas

Colorado

# Olsson Associates

Well Site Supervision

Geologic Consulting

Environmental Permitting

Surveying

Pipeline Controls Design

GIS

Geotechnical Engineering

Hydrogeology

Water Resources Engineering

Water/Wastewater Engineering

Additional Services:

Municipal Consulting

Land Development

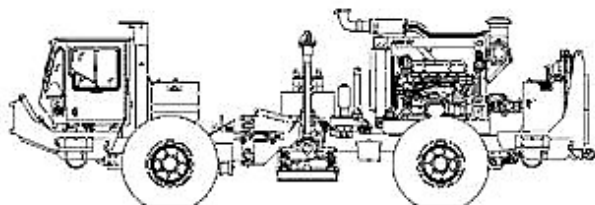
Jeff Johnson, Ph.D., Geologist - 402.458.5907

Clayton Erickson, Geologist - 308.995.8706

Dave Weinert, Geologist - 308.995-8706

[www.oaconsulting.com](http://www.oaconsulting.com)

OLSSON ASSOCIATES



~The TOP CHOICE for 3D SEISMIC~

John H Beury III ~ Pres John Aguilar ~ Op. Mgr.

PHONE (316) 636 - 5552 FAX (316) 636 - 5572

3500 N. Rock Rd., Bldg 800, Suite B  
Wichita, KS 67226

[paragon@paragongeo.com](mailto:paragon@paragongeo.com)

**Kansas Geological Foundation  
Items for Sale**

Several sets of geological data and publications:

AAPG Bulletins, Shale Shakers,  
Mountain Geologist,  
Mining Engineering, Economic Geology

Kansas Completion Card Sets  
Completion Card File Cabinets  
Microfiche Readers ♦ Geology Books  
Blue Line Printer

Logs and Data from several other states  
Framed Pool Maps ♦ Wood Rolled Map Stand  
Metal Rolled Map Stand and Cabinets

**Looking for something ?  
Many more items  
are available**

**Inquire at KGS Library**

**Editor's Note:** This new section of the bulletin will periodically feature scenes of geological interest in Kansas and from anywhere else in the world, or for that matter, on other planets in our solar system. All readers are encouraged to submit such images along with short, explanatory captions as illustrated below. Send all submissions via electronic format (images as jpegs, and separately, text in Microsoft Word or WordPerfect format) to the technical editor, Sal Mazzullo, at either [salvatore.mazzullo@wichita.edu](mailto:salvatore.mazzullo@wichita.edu) or [dolomite@cox.net](mailto:dolomite@cox.net).

## Modern River Sands

River (fluvial) sands locally are prolific hydrocarbon reservoirs throughout subsurface Kansas (and elsewhere in the world). Fluvial systems that transport and deposit sands can be included under the general categories of meandering streams (high to low-sinuosity) or braided streams. Regardless of fluvial system type, lateral changes in sand thickness, specific lithology (e.g., fine to coarse sand, gravelly sand, shaly sand) and reservoir quality (reflecting specific lithology and degree of porosity-permeability development) are inherent attributes of river sands. Figure 1 is a view of the Arkansas River, a low-sinuosity and shallow, meandering stream; the photo was taken on the foot-bridge near the intersection of Central and McLean-Amidon Streets in Wichita. Note the point-bars on the top-left and bottom-right, the human-modified cut bank opposite the point-bar at top-left, and the mid-channel bar. When the photo was taken, the deepest part of the river (the thalweg) and mid-channel bars ran diagonally across the center of the photo; water depth was 6 inches and less. This illustration serves as a model of some geologic attributes of ancient river sands. Of course, there is a scale (sediment thickness) difference between these modern deposits and ancient fluvial deposits because we are looking at only a "snap-shot," two-dimensional view of the Arkansas River.

Point-bars along the river comprise the thickest section of sands in most meandering-stream depositional systems; and typically they comprise, at least in the depositional environment, highly porous and permeable sands. If the point-bars are the primary reservoir objectives in ancient deposits, note that they alternate from one side of the meandering channel to the other. Predicting where meanders and point-bar deposits might be in the subsurface, however, is not straightforward. During times of low flow and low water, many point-bars are colonized



Figure 1: A view of the Arkansas River

locally to entirely by plants, which can be effective during floods in baffling currents and thus trapping pore-plugging fine sediments (e.g., mud). During the waning stages of floods, fines also locally are deposited atop point-bars as thin layers of mud. As point-bar thickness increases with continued deposition over time, in both cases these fines can reduce porosity and vertical permeability within discrete zones in sections of point-bar sands. In some cases, thin layers of shale in a point-bar section may vertically compartmentalize the reservoir into discrete productive units. Hence, the petrophysical properties of one point-bar reservoir in a field may be different from that of another, separate point-bar in an adjoining field depending on the amount of shale (mud) that was deposited during waning stages of floods or trapped by plants.

If thalweg deposits are the primary reservoir objectives, note their low sinuosity within the meander belt of the Arkansas River. In other fluvial systems, however, thalweg (and associated) deposits instead can be highly sinuous. Thalweg deposits typically include the coarsest bed-load material (bed-load) present in fluvial deposits, including water-saturated plant material, heavy minerals if present, and pebble-size and coarser rock fragments. The mix of such particles typically results in thalweg deposits in ancient rocks having relatively high gamma ray signatures. In contrast, point-bar deposits generally are "cleaner" (unless they contain muds as discussed above), and accordingly, the gamma-ray signature of deposits of a meandering fluvial system typically clean upwards.

(Continued on page 12)

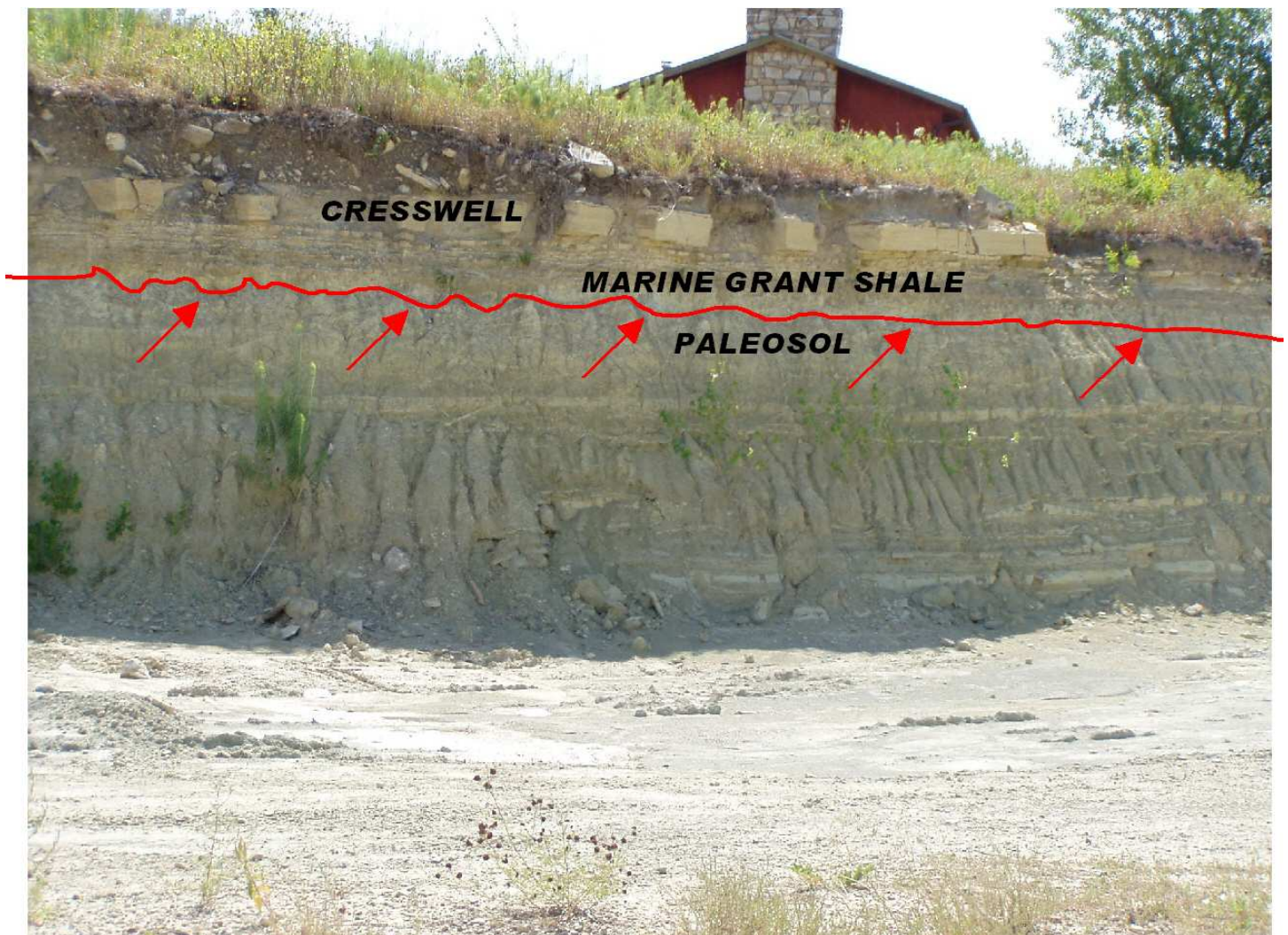
(Continued from page 11)

## Ancient Soils and Transgressive Marine Surfaces

Among other things geological, Kansas is noted for its Pennsylvanian cyclothems, which are ancient sedimentary deposits that record cycles of relative or absolute sea-level rise and fall. Figure 2 shows part of the Grant Shale Member and basal beds of the overlying Cresswell Limestone Member, both units within the Winfield Formation (Permian, Chase Group). The photo was taken just east of the town of Winfield in Cowley County. The scalloped surface indicated by the arrows is the top of a paleosol in the Grant. The thin section of lighter-colored shale immediately above this surface is within the uppermost part of the Grant Member. These rocks contain marine fossils, specifically an impoverished assemblage dominated by molluscs. Gradationally overlying these shales are limestone beds within the lower part of the Cresswell Member.

The section in the photo represents sea-level rise and marine transgression of the paleosol in the Grant Member, which was accompanied by minor scouring and erosion. Overlying fossiliferous shale beds are nearshore-marine deposits that contain clasts of paleosol, and they grade upward as transgression continued into more offshore, fully marine limestones. The signature of transgressive deposits commonly is reflected in gamma-ray logs as sections that grade upward from relatively radioactive shale to "cleaner" limestone, but the specific transition from paleosol to overlying nearshore-marine shales usually is not identifiable on logs.

*Submitted by Sal Mazzullo*



# WALTERS DIGITAL LIBRARY

The Robert F. Walters

DIGITAL



GEOLOGICAL  
LIBRARY

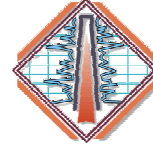
## Subscription Service To Kansas Data!

**Our web address**

[www.waltersdigitallibrary.com](http://www.waltersdigitallibrary.com)

The Robert F. Walters

DIGITAL



GEOLOGICAL  
LIBRARY

***All West Ranges Are Now Completed***

***Check Out Our New Pricing Structure & Find What Works Best For You***

1-month trial period for \$250.00 (which can apply toward a 1 year subscription )

3-months for \$600.00 (designed for the person with a project in Kansas but does not necessarily need a full year's membership)

### **Regular Pricing of Digital Library Memberships:**

- ◆ KGS Library Members = Can subscribe to the Walters Digital Library for \$600.00 / year
- ◆ Non-KGS Library Members = Can Subscribe for \$1500.00 / year

**Try the Demo for Free  
And learn how easy it is to access data!**

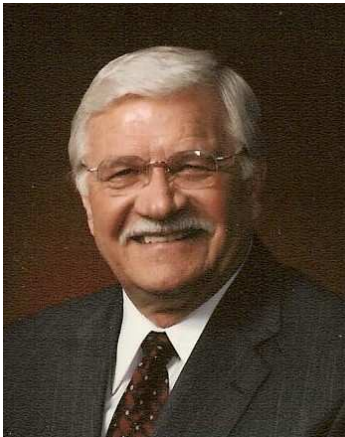
**Call Now to Sign Up!!**

***Toll Free: 877-265-7300***

***Local: 263-2916***

# Member Profile

---



## *Don Beauchamp*

The time has arrived to write the story of one of the most successful “geologists/oil-finders” in this area. Don was the second of three sons born into the Beauchamp family on October 10, 1936 in Guide Rock, Nebraska. Don has an older brother, Gene who is now a retired Aeronautical Engineer, and a younger brother, Ken, who is a maintenance manager for Georgia Pacific.

Don attended grade school and high school in Lindsborg, Kansas, and graduated from Lindsborg High School in 1954. At Lindsborg High School, Don played both football and basketball. He was married that same year to Jennie Templin who was later killed in a car accident in 1957. During his high school days he worked at service stations in Lindsborg, and in the summer he worked as a roustabout in the Lindsborg Pool area for his neighbor “Mac” McCabe, who was employed by Bay Petroleum.

After graduating from high school Don worked briefly for Chalmers and Borton Construction Company building grain elevators before going to work for Eby Construction Company as a brick tender. Later, Don contacted Martin Eby about part time employment. Eby offered to pay his college tuition and give him a job after graduation if he would enroll in civil engineering. Don says that he turned the offer down because he had already made the decision to become a geologist. According to Don, several factors were involved in that decision. He believes that sitting on the banks of reserve pits listening to the noise and watching the work of the rotary rigs and the pumping units helped him form the decision to be involved in the Petroleum Industry. Perhaps not a main reason for his decision, but a factor, was listening to geologists making

well reports on the pay phones at the service stations and then watching them order extra thick milk shakes at the drug store (for an extra five cents).

In 1954, Don enrolled at Wichita University. During his freshman year Dr. Ver Wiebe was his advisor, but for the rest of his time at WU Dr. Berg was his advisor. Don says that his favorite professors were Drs. Andrew Lang and Calvin Noah. He took every course that Dr. Noah taught because he found that he really prepared his students for the outside world. They learned how to plot drilling time, spot well locations, make sample logs, contour maps, learn the stratigraphy of road cuts, and with that knowledge, prepare cross sections, read electric logs, etc.

Among his classmates at Wichita University were a number of prominent Wichita geologists including: Jene Darmstetter, Bill Hamm, Byron Hummon, Roger McCoy, Jerry Langrehr, Arden Ratzlaff, Bill Ree and Eldon Schierling. While at the University he worked at a Standard Service Station, but in his sophomore year, thanks to Harold “Cug” Steincamp, he secured employment with Robert F. Walters of Walters Drilling Company as a geo-tech. As he looks back, Don believes that going to work for Bob Walters was one of the best things that ever happened to him. During the school year he spotted maps, drafted, filed cards, etc. In the summer months, he pumped wells, worked on cable tool rigs, and finally, rough-necked for Walters Drilling Company.

When he graduated in 1959 Walters and his partner, Fred James created a job for him sitting on wells, and in the process, taught him the business. Don thinks he was very lucky since only a handful from his graduating class were able to obtain employment, and most of those who did were already geo-techs.

As many geologists do, Don remembers the first two holes he went out on, both dry holes. The first was the Meils #1 in Section 30-34S-1W, in Sumner County. Fred James and Ed Darrow were present to show him how well sitting was done. The next test, the Van Valkenburg, section 29-31S-5W, he handled by himself. After these two dry holes, Don sat on four test wells in a row that either flowed oil and/or gas. He then decided this business of “finding oil” was easy, but later, reality set in.

During this early period following graduation, Don and Fred James went to Kremmling, Colorado where they used an alidade to spot elevations over parts of the Middle Park Basin, and ran a gravity survey of the area. Later, Walters Drilling Company drilled a test based on this work.

---

In 1959, Don married Billy Brown with whom he had three children: Toni, Jeffrey, and Craig. Billy died of lung cancer in 1990.

In 1971, Don joined Okmar Oil and Beren Corporation as Vice-President and Exploration Manager. During the fifteen years that he was employed there in the late seventies and early eighties the company enjoyed some real boom times. In some of those years they drilled as many as 160 tests out of the Wichita office, as well as being involved in tests with others in the Gulf Coast, Midland Basin, Delaware Basin, Bend Arch, Nebraska and Oklahoma. They even drilled two offshore wells and one in the Florida Panhandle.

Don married Linda S. Bailey (Peterson) in 1976 under a willow tree next to a pond on their residence near Cheney, Kansas. They just recently celebrated their 30th wedding anniversary. Don has a stepson, Troy Bailey and a stepdaughter, Brenda Corey. He has four grandchildren.

After the fantastic ride and great experience with Beren, Don decided the time was right for him to be on his own. So in January, 1986 he became an Independent. His timing, as many will recall, was not all that great. 1986 was the beginning of a downturn in a very cyclical industry. Don remained an Independent until 1990. He and his old college buddy, Byron Hummon, worked quite a few deals together in Kansas and Nebraska and even drilled in the Michigan Basin.

In 1990 Pickrell Drilling Company offered him a position, which he accepted. In 1993, Don became Exploration Manager. Don remained with Pickrell until 2000 when he accepted a position with Abercrombie Energy, L.L.C. as Vice-President of Exploration, and has enjoyed a relationship there with co-owners Steve Frankamp and Mark Gaylon.

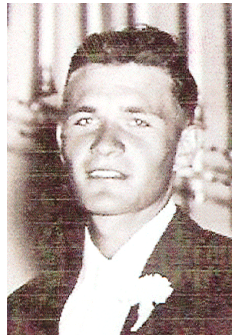
Over the years, Don has been very active in a number of professional and industry organizations. Some of the highlights are: Vice-President and President of the Kansas Geological Society, President of the Kansas Geological Foundation (During this period he approved the Walters Digital Library), Vice-President of the Wichita State Geology Advisory Board, and Secretary and Vice-President of the Wichita Petroleum Club. He has also served as a delegate to the House of Delegates of the American Association of Petroleum Geologists, representing the Kansas Geological Society.

He has participated in numerous recreational and community activities. He played intramural basketball in college and during this period participated in "drag racing" with his older brother, setting several track records with "B Hot Roadster." Since his college days he played town team and industrial league basketball until he was 33 years old. He has also coached 4th, 5th and 6th grades at Goddard in football and basketball.

Since 1968 his real and intense passion has been dogs. Eldon Schierling introduced him to his first field trial competition at the Wichita Bird Dog Club. In 1974 Don and some friends organized the Kansas Red Setter Club. In 1976 Don was a charter member and helped found the Kansas Field Trials Club Association. Of the first 39 "Dog of the Year" awards given out, Don's dogs won 13.

From 1976 to 1979, Don was President of the National Red Setter Field Trial Club and assumed the presidency again in 2005. Again in 1986 a new Field Trial organization was formed, the Region 17 Amateur Field Trial Club, of which Don was a charter member. He has since served on its Board of Directors and as President.

On the national scene, Don has judged nearly 50 major open and amateur All-Age and Shooting Dog Championships and judged the American Field Quail Futurity twice. Judging assignments have taken him from Mortlach, Canada to Slayden, Mississippi and Hoffman, North Carolina to Paducah, Texas.



Looking back on his career, Don realizes how very fortunate he has been to have selected a profession that he still loves enough to look forward to going to work every day. He believes

he has learned much over the years from bosses who have all contributed to his success and education. He says the list reads like a who's who and includes Robert F. Walters, Robert M. Beren, Carl W. Sebits, and Albert Abercrombie, in addition to all the other professionals and business associates with whom he has been so fortunate to work. Don has this advice to the young person interested in the profession: Start at the bottom, learn as much as you can about every aspect of the business, don't be afraid to get your hands dirty, and all of this will pay dividends in the future. Don't believe the saying "well digging is the only job where you start at the top."

This has been a very short story of a remarkable career and a career that is not over. We will hear more about Don in the future.



# MEET THE CANDIDATES

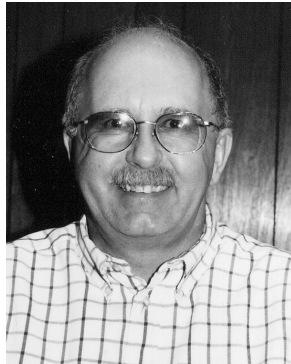
## 2007-08 Election of Officers

*Exercise your right to vote!*

Ballots will be coming out the first week of November and will be due back to the library by December 15th.

### Vice-President / President 2007-08

#### ***Ernest R. Morrison***



**Education:**

Assoc. Science Degree, Geology, Amarillo Jr. College, 1973; B.S. West Texas St Univ., 1975; M.S. West Texas St. Univ., 1979; B.S. Business, Tabor College, Wichita Campus

**Professional Experience:**

2000-Present, Production Geologist, Murfin Drilling Co, Inc; 1999-2000, Geologist, Kansas Geological Survey, Wichita; 1998-1999, Consulting Geologist; 1994-1998, Geologist, Hugoton Energy Corp.; 1985-1994, Consulting Geologist; 1984-1985, Geologist, Sunwest Exploration Co.; 1979-1984, Geologist, Imperial Oil & Gas, Inc.; 1976-1979, Geologist, Colorado Interstate Gas Exploration Co.

**Professional Affiliations:**

KGS, AAPG #4825, HGS, Licensed Kansas Geologist #306

**KGS Board and Committees:**

Library Committee, Picnic Committee, Banquet Committee.

#### ***Kent Roberts***



**Education:**

B.A., Geology, 1984, Fort Hays State University

**Professional Experience:**

President, Roberts Resources, Inc., 2000 to present.  
Lease Operations Manager / Geologist, Hummon Corp. 1997 to 2000.  
Consulting Geologist, 1996 to 1997.  
Geologist / Production Superintendent, Ainsworth Operating Co., 1987 to 1996.  
Consulting Geologist, 1986 to 1987.  
Geologist, Mid-Continent Energy Corp., 1984 to 1986.

**Professional Affiliations:**

KGS, 1984 to present  
AAPG, 1983 to present  
Licensed Kansas Geologist #311

**KGS Board and Committees:**

KGS Golf Committee  
KGS Picnic Chairman



## Secretary / Treasurer 2007-08

### *Rick Saenger*

#### **Education:**

B.S. Math, North Texas State;  
B.S. Geology, University of Houston;  
19 hours graduate studies.

#### **Professional Experience:**

Mull Drilling Company, present;  
Mustang Oil & Gas;  
J.M. Huber Corp.;  
Mobil Exploration Co., Inc.;  
R. Brewer & Co. Consultant;  
Professional Geophysics, Inc.— Seismic Data Processing.

#### **Professional Affiliations:**

Kansas Geological Society, AAPG; SEG.

#### **KGS Board and Committees:**

Shooting Tournament Committee.



### *David G Withrow*

#### **Education:**

B.A., Geology,  
Wichita State University,  
1986;  
M.B.A.,  
Wichita State University,  
1989

#### **Professional Experience:**

Managing Partner,  
Edison Energy, L.L.C., since 1995  
Vice President of Exploration,  
Oil Producers, Inc., since 2001  
Petroleum Geologist,  
Hugoton Energy Corp., 1988-1995

#### **Professional Affiliations:**

Kansas Geological Society, 1988-Present  
AAPG #484050, 1984-Present  
Licensed Kansas Geologist #158



## Member At Large 2007-08

### *Robert Stolzle*

#### **Education:**

B.Sc., Geology, 1972,  
L.S.U., Baton Rouge, LA

#### **Professional Experience:**

Consulting Geologist—1985-Present  
Foundation Resources  
Team Resources Corp.  
Anschutz Corporation  
Staff Geologist—Kenai Oil & Gas, Inc. 1982-1985  
Exploration Geologist—Terra Resources, Inc. 1980-1982  
Exploration Geologist—MAPCO, Inc. 1978-1980  
Geologist—R.R. Thorup Consulting Geologists 1972-1978

#### **Professional Affiliations:**

Kansas Geological Society  
Licensed Kansas Geologist #278  
AAPG Certified Professional Geologist #5692  
Society of Petroleum Engineers



### *Marc R. Summervill*

#### **Education:**

B.S., Geology, 1984,  
Kansas State University;  
30 hours graduate studies,  
Wichita State University

#### **Professional Experience:**

Geologist—Woolsey Energy Corporation, 1992-Present  
Geologist—Ritchie Exploration, Inc.  
1985-1986

#### **Professional Affiliations:**

KGS, 1985 to present  
AAPG, 1983 to present  
Licensed Kansas Geologist #119

#### **KGS Board and Committees:**

KGS Computer Committee  
KGS Bulletin Editor



# ***Highlights from the Annual KGS Shooting Tournament***



*Larry Richardson, shooting tournament chairman*



*Larry and Rick drawing numbers*



*Getting ready to shoot*



*Rick Saenger preparing to shoot*



*Great prizes!*



*Winning the gun!*

# WORLD RECORD METEORITE

On October 4, 2006, Steve Arnold, famed meteorite hunter, gave a talk to the Kansas Geological Society and the general public at Exploration Place in Wichita. In October 2005, Steve found one of the largest meteorites of modern times, a complete, oriented pallasite that weighed in at approximately three quarters of a ton. This pallasite was found in a farmer's field in Kiowa County.

Steve explained that pallasites are one of the more rare class of meteorites and account for only about 1% of all known meteorites. These “special” meteorites contain olivine, which is considered a semi-precious gemstone known as peridot and are suspended in a nickel-iron matrix.

Steve's find is on display at Exploration Place, lower level just outside the Cyberdome. More information on Steve and his search for meteorites in Kansas can be found on the website: [www.worldrecordmeteorite.com](http://www.worldrecordmeteorite.com)



**Steve Arnold with one of his “smaller” finds.**

Photo by Rebecca Radford

## *New DVD's added to the Kansas Geological Foundation Library*

### **Flood of the Millennium: Discovery Channel**

This DVD describes the flood and the results thereof that occurred in 1997 in the Red River Valley of North Dakota.

### **Unfolding Universe: Discovery Channel**

This DVD reconstructs the history of the galaxy including its birth 15 billion years ago.

### **The Elegant Universe: Discovery Channel / Nova**

Describes Newton's work concerning gravity, Maxwell's combined theories of electricity and electro-magnetism, and the later work of Einstein.

### **Ultimate Guide—Volcanoes: Discovery Channel**

Discusses the eruption of the volcano in Ecuador in 1999 and the volcanic eruption at Montserrat in 1997.

### **Volcanoes of the Deep Sea: Discovery Channel**

Explores undersea volcanic habitats filled with strange creatures and landscapes.

### **Earthquake Storms: Discovery Channel**

Delves into the theory that one earthquake may trigger one or more additional quakes. Uses Turkey as an example and warns that there may, in the future, be an earthquake in the Istanbul area that would affect as many as 15 billion people.

### **Super Volcanoes: Discovery Channel**

A fictional story of the eruption of a volcano under Yellowstone and the events leading up to it.

### **Tsunami: Discovery Channel**

Account of the tsunami in 2004 that was the result of an earthquake off the coast of Indonesia that became the worst natural disaster in human history, killing 250,000 people and affecting 13 countries. Warns of a possible tsunami resulting from an earthquake off the coast of Washington that would strike the coasts of Canada, Washington, Oregon and California.

### **360 Degrees of Mesa Verde, Virtual Tour-Four Chambers**

45 interactive 360 degree panoramic views of the archaeological sites at Mesa Verde. Also includes views of the Mesa Verde formation

**If you want to check any of these out contact  
Janice Bright at the Kansas Geological Society/Library  
316-265-8676.**

**Your only cost is returning them to the Library**

*page*

A2D Technologies	2
Abercrombie RTD, Inc	21
Allied Cementing Company, Inc	21
Dombar Mud Inc	21
Duke Drilling	21
GeoCare Services AAPG	8
Great Eastern Energy & Development	8
Greensburg Oilfield Service	21
Kansas Geological Foundation	26
Landmark Square	4
Lockhart Geophysical	21
LogSleuth	29
MBC	4
Murfin Drilling Company, Inc	21
Olsson Associates	10
PARAGON Geophysical Services, Inc	10
Petrobase	21
Professional Directory	22
Sunrise Oilfield Supply	4
Trilobite Testing	6
Walters Digital Library	13
Weatherford	31

## ADVERTISER'S RATES: 2006

Full Page	B&W	Color
6 issues	\$2,000	\$2,500
3 issues	\$1,080	\$1,325
1 issue	\$480	\$525
<b>1/2 Page</b>		
6 issues	\$1,000	\$1,500
3 issues	\$540	\$825
1 issue	\$225	\$350
<b>1/4 Page</b>		
6 issues	\$600	\$900
3 issues	\$325	\$525
1 issue	\$150	\$250
<b>1/8 Page</b>		
6 issues	\$300	\$500
3 issues	\$175	\$325
1 issue	\$75	\$185
<b>Professional Ad (Business Card)</b>		
6 issues	\$90	\$180

*Full page, 1/2 page and 1/4 page ads receive an ad space in the KGS Directory at no additional charge.*

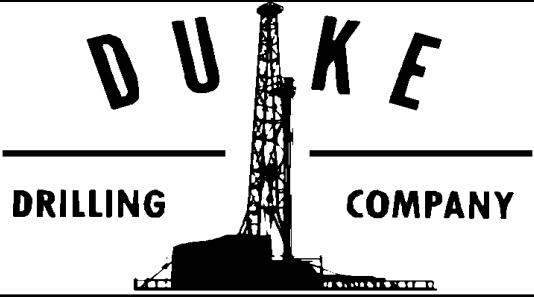
*Established 1976*



**MURFIN**  
DRILLING COMPANY, INC.  
WICHITA, KANSAS

<i>WESTERN KANSAS</i>	<i>EASTERN COLORADO OKLAHOMA PANHANDLE</i>	<i>SOUTHERN NEBRASKA</i>
9 Drilling Rigs		10 Well Servicing Rigs

<p>For contract information:</p> <p><b>Mindi Whyte</b> Drilling Department 316-858-8671 (Direct Line) 250 N. Water, Suite 300 Wichita, KS 67202</p>	<p>For contract information:</p> <p><b>Alan Hayes</b> Well Service Supervisor 785-421-2102 East Highway 24 Hill City, KS 67642</p>
---	--



**DUKE**  
DRILLING COMPANY

---

**ROTARY DRILLING CONTRACTOR**

<p>620 Hubbard PO Box 823 Great Bend, KS 67530 Phone 620-793-8366</p>	<p>100 S. Main, Ste. 410, Wichita, KS 67202 Phone 316-267-1331 Fax 316-267-5180</p>
---	---

# ABERCROMBIE RTD, INC.

Rotary Drilling Contractor

---

Operating 4 Rigs in Western Kansas & NW Oklahoma

150 N. MAIN SUITE 801  
WICHITA, KANSAS 67202-1383  
**(316) 262-1841**





**GREENSBURG OILFIELD SERVICES**  
P.O. Box 816  
Greensburg, KS 67054

- \* Hot oil treating
- \* Bulldozers
- \* Paraffin removal
- \* Motor grader
- \* High pressure pumps
- \* Vacuum Truck
- \* Oilfield tank cleaning
- \* Steamer
- \* Power washing
- \* Fully Insured
- \* Fresh and salt water hauling
- \* Work Guaranteed

TOLL FREE 800-794-7806

Greensburg, KS (620) -723-2112  
Pratt, KS (620) -672-6044  
Great Bend, KS (620) -793-9790

<b>Great Bend</b> (620) 793-5861	<b>Ness City</b> (785) 798-3843	<b>Medicine Lodge</b> (620) 886-5926
-------------------------------------	------------------------------------	---

# ALLIED

## CEMENTING CO., INC.

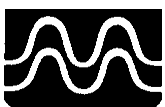
Acidizing Available at Medicine Lodge District

<p><b>Russell</b> (785) 483-2627</p>	<p><b>Oakley</b> (785) 672-3452</p>
--	---

## Lockhart Geophysical Company

Call (303) 592-5220 FAX (303) 592-5225  
Or E-mail lockden@xpert.net

**2D & 3D Seismic Acquisition**  
Vibroseis Specialists



**JAPEX GDAPS-4** Distributed System

We'll give you seismic excellence

## PETROBASE

**The Digital Database for Western Kansas**

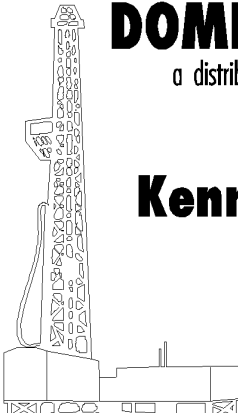
High Quality Data Your Software Can Use  
Includes All Central and Western Counties  
All Wells — Dating from the 1800's

*The Most Complete and Extensively Edited Data Available*

Headers • Tops • Dsts • Perfs and Other Unique Features  
Geologically Selected Formation Tops-Consistent Stratigraphic Nomenclature  
Accurate Latitudes-Longitudes Tied to Digital Land Grids

Robert D. Dougherty, Geologist P.O. Box 1065	Phone (620)793-9055 Great Bend, Kansas 67530
---	---

or call WhiteStar Corporation in Denver — (303) 781-5182



## **DOMBAR MUD Inc.**

a distributor of Bariod Mud Products  
*GAS DETECTORS*

## **Kenneth W. Dohm**

Owner

	<p>Off: (620) 792-4337 Res: (620) 792-5536</p>
6101 W. Tenth	Gt. Bend, KS

# PROFESSIONAL DIRECTORY

**Kirk Rundle**  
**Consulting Geophysicist**

3D Seismic Design, Acquisition to Processing QC.,  
Interpretation and Analysis, Subsurface Integration  
7340 W. 21st. N., Ste. 100  
Wichita, Kansas 67205

Office: 316-721-1421 Fax: 316-721-1843  
Home: 316-721-8962 Email:krundle@swbell.net

**ROGER L. MARTIN**

*Independent/Consultant  
Petroleum Geologist*

200 East First Street, Ste. 405  
Wichita, Kansas 67202

Office 316-267-0032/Cell: 316-250-6970

Fax: (316) 264-8686

Email: rogermartingeo@sbcglobal.net

**DON V. RIDER**  
*Consulting Petroleum Geologist*  
**Well Site Supervision  
Geological Studies  
Completions**

8910 W. Central Park Ct.  
Wichita, KS 67205

Office PH: 316-729-4445 Cell PH: 316-706-7199

**ALFRED JAMES III**

*Petroleum Geologist*  
Kansas - Colorado - Alaska

SIPES #1111

Wichita, Kansas 67202

Off: (316) 267-7592



*"Specialist in Wire Line Completion & Digital Open-Hole Logging"*

- ◆ Open Hole
  - ◆ Production Logging
  - ◆ Cased Hole
  - ◆ Pipe Recovery
- Liberal, KS 620-624-4941 Enid, OK 580-544-0552

**M. Bradford Rine**

*Honorary Life Member—Kansas Geological Society*

*Licensed Geologist—KS. #204  
Registered Professional Geologist—Wyo. # 189  
Certified Geologist—A.A.P.G. # 2647  
S.I.P.E.S. # 1584 S.P.E. #109833-4*

PROSPECT EVALUATION • PROSPECT GENERATION  
WELLSITE SUPERVISION • EXPERT TESTIMONY • OPERATIONS  
PROPERTY EVALUATION • RESERVOIR STUDIES  
DRLG./COMP. CONSULTATION

Suite 415  
100 S. Main  
Wichita, KS 67202

Office: (316) 262-5418  
Fax: (316) 264-1328  
Cell: (316) 772-6829

**WESLEY D. HANSEN**

*Consulting Geologist*

Well site Supervision  
Geologic Studies

212 N. Market, Ste 257  
Wichita, Kansas 67202

Off: (316) 263-7313

Mobile: (316) 772-6188

**RMG**

**Paul Gunzelman**  
President

phone 316.3.1.6026 fax 316.634.2716

Email p.gun@sbcglobal.net



**KEVIN L. KESSLER**

INDEPENDENT/CONSULTING PETROLEUM GEOLOGIST

WELLSITE SUPERVISION • GEOLOGIC RESEARCH  
OIL & GAS PROSPECTS  
KANSAS & EASTERN COLORADO

MAILING ADDRESS

1199 N. PONDEROSA RD.  
BELLE PLAINE, KS 67013

PHONE

RES.: (316) 522-7338  
MOBILE: (316) 706-6636

EMAIL: KKESSLER1199@AOL.COM

**ROBERT J. GUTRU**

*Geologist*

300 Farmers & Bankers Bldg.  
200 East First Street

Wichita, Kansas 67202

Off: (316) 265-3402

Promote Yourself!

Buy an AD space in our Bulletin

# PROFESSIONAL DIRECTORY

## MELLAND ENGINEERING

*Petroleum Engineering & Geological Consulting*

**James E. Melland, P.E.**

Owner

Office: (620) 241-4621 Fax: (620) 241-2621

Cell Phone: (661) 319-5950

Email: jemelland@sbcglobal.net

Jamesm@mellandengineering.com

P.O. Box 841, McPherson, KS 67460

## KGJ ENTERPRISES

Contract Oil & Gas Accounting &  
Office Management

Kathryn G. James, MBA  
4278 SW 100th ST.  
Augusta, KS 67010

(316) 775-0954  
(316) 250-5989  
kgjames@onemain.com

 Energy Services, Inc.

Providing Oil & Gas Services in Accounting,  
Production Reporting, Engineering &  
Geological support

**Terri L. Watanuki**  
5302 Jellison St.  
Arvada, CO 80002

(Home) 303-984-7910  
(Cell) 303-517-8150  
(Fax) 303-984-9229  
stduo@aol.com



## HOLY COW DESIGN

Linda McCune 264-2727 [Holycow1@cox.net](mailto:Holycow1@cox.net)

Machine Embroidery on just about anything!  
Hats • Jackets • Shirts • Towels • Bags • Promo Items  
Quality Embroidery • Reasonable • Quick Turnaround



**Promote Yourself!**

**Buy an AD space  
in our Bulletin**

## Help Wanted! Integration Project

If you have any time you could give to  
the  
Library, we have  
projects that could move a little faster  
with some  
**Expert Professional  
Geologists**

Just a few hours a week  
would make such a  
difference.

To volunteer, please contact Ted Jochems  
or Rebecca at the Library  
265-8676

## THE ON-LINE BULLETIN IS NOW IN PDF FORMAT

Check out the complete KGS  
Bulletin on our web site  
[www.kgslibrary.com](http://www.kgslibrary.com)

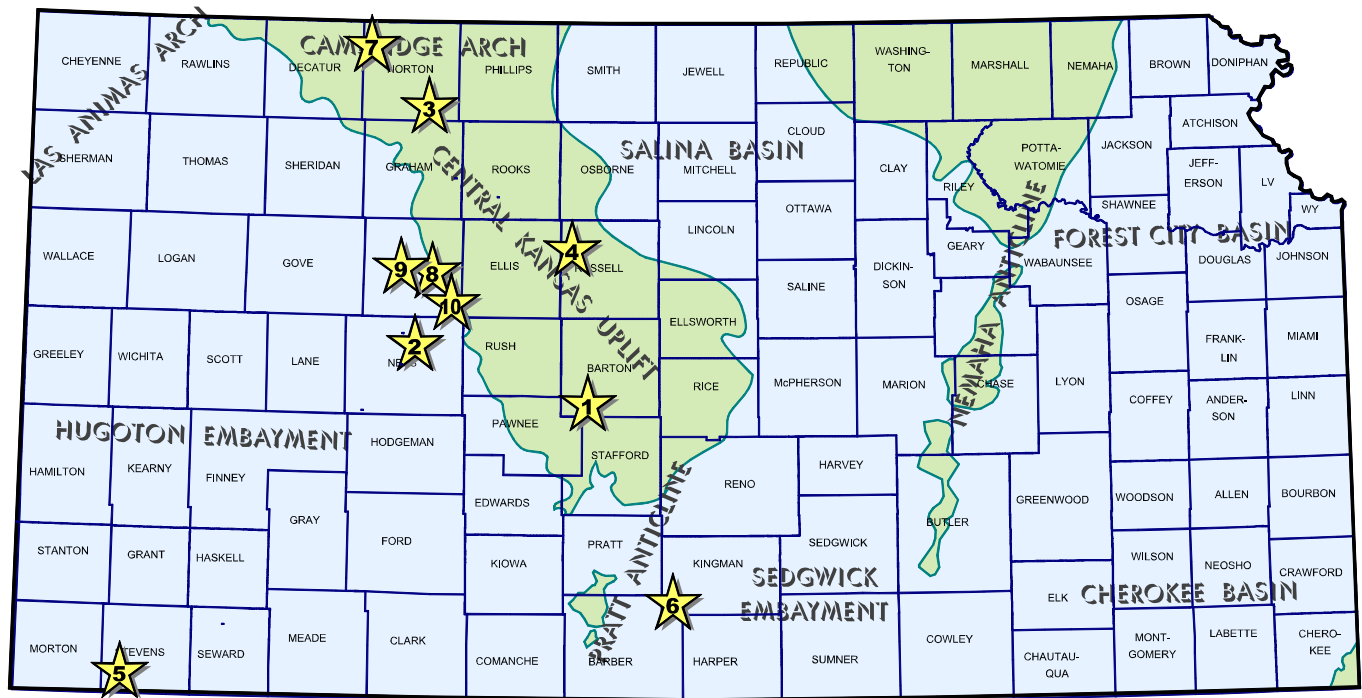
A simple way to help your Society save money  
would be to let us know if you like viewing the  
Bulletin on line. This would allow us to reduce  
our mailing & printing costs of sending the Bulletin  
to every member.

We are glad to keep mailing it to you but if you  
are satisfied with reading on-line, please just let  
us know.

**316-265-8676**

# Exploration Highlights

By John H. Morrison, III  
Independent Oil & Gas Service



## 1) New Arbuckle Gas Discovery by F. H. Holl Company, LLC

New Arbuckle gas production has been established at a westerly stepout well located nearly fifth-eighths mile west of the Four Field by F. G. Holl Company, LLC, of Wichita, Kansas. The Brining #1-2, SE/4 in section 2- T20s- R14W, Barton County, is flowing an undisclosed amount of natural gas. Operator contracted with Duke Drilling to drill the well to a total depth of 3676 ft. The Four Field previously had produced only oil from the Lansing-Kansas City and Arbuckle formations since 1967. The Arbuckle is productive around 3500 ft. in depth. Field area is located one mile south and one and one-quarter miles west of Great Bend, Kansas.

## 2) Palomino Petroleum Opens New Field

A new seismic-based pool discovery located five and one half miles north of Ness City, Kansas in Ness County is yielding 56 barrels of oil and 2 barrels of water per day. Operator, Palomino Petroleum, Inc., of Newton (KS), has completed the Pfeifer-Klitzke #1 in the SE/4 of section 30-T17s- R23W. The well is producing crude from

Cherokee Sand perforations from 4462 to 4472 ft. Total depth is 4567 ft. Well site is located three-quarters mile west of Mississippian oil production in the Miner Northeast Field. Palomino's new field has not been named.

## 3) Vincent Oil Corp. Completes New Discovery

A new unnamed oil field has been discovered in section 32- T5s- R22W in Norton County by Wichita-based producer Vincent Oil Corporation. The firm's Legere #1-32, spotted in about the SE/4 started producing oil on pump on September 1, 2006. The wildcat well found reserves in the Lansing-Kansas City limestones at undisclosed depths. No production information has been released. Rotary total depth was obtained by WW Drilling tools at 3900 ft. The new oil discovery is situated nearly one mile southwest of Ritchie Exploration's #1 A. Griffey, which was completed for 25 barrels of oil per day in 1996. The Griffey well established the Kemper Northeast Field and produced oil from Lansing-Kansas City perforations from 3611 to 3627 ft. Ritchie's new field discovery has not been named. Site is located six miles southwest of Densmore, Kansas.



#### **4) J. O. Farmer, Inc. Establishes New Field in Russell County**

New Arbuckle oil reserves have been discovered in the western part of the county about three-quarters mile east of the Gayler oil field. Based on seismic interpretation, the wildcat well found isolated Arbuckle feature in the SE/4 of section 27- T12s- R15W. John O. Farmer, Inc., of Russell (KS), operated the well and drilled it to a total depth of 3310 ft. Pay zone was perforated at an undisclosed depth above 3284 ft. Production commenced on June 26, 2006. The unnamed field is located six and one-half miles north and three miles east of Gorham, Kansas in Russell County. Farmer has established eight new fields in Kansas so far this year.

#### **5) EOG Resources Finds Morrow Gas Reserves**

EOG Resources, Oklahoma City (OK), has established new Morrow gas production at a wildcat well located in the SW/4 of section 11- T34s- R38W in Stevens County. The Verna #11-1 started producing an undisclosed amount of natural gas on July 14, 2006 at site situated about six miles southwest of Hugoton, Kansas. The new pool opener was drilled to a total depth of 6690 ft. by Abercrombie RTD tools. Field area lies two and one-quarter miles from the Feterita East Field, which Anadarko Petroleum Corp. discovered in 1998. The Feterita East Field also produces Morrow gas.

#### **6) Viola Oil Reserves Found by Dixon Energy**

A new Viola oil discovery has been reported in western Kingman County, near the Barber County line, by Wichita-based Dixon Energy, Inc. Operator has completed the #1 Rolf Land, SE/4 in section 18- T30s- R10W, for 30.52 barrels of oil per day. The well was actually drilled in November, 2003 but was not put on the pump until October, 2005. Completion details have not been reported. State production records show the well has produced 9,229 barrels of oil during the first two months on pump. The remote wildcat well lies nearly four miles from closest known production in the Nashville Southwest Field (Admire gas), about one and one-half miles west of the town of Nashville, Kansas. The new field has not been named.

#### **7) Norton County Wildcat Completed by Great Plains Energy**

Great Plains Energy, Inc., of Wahoo (NE), has discovered oil deposits at the Shulte #1, located in the NW/4 of section 16- T2s- R25W in Norton

County. The wildcat well is producing an undisclosed amount of oil at site two miles north and three-quarters mile east of Norcatur, Kansas. Production zone is unknown. The unnamed pool opener was drilled five-eighths mile north of Mull Drilling Company's #1 Breiner that tested oil shows in several Lansing-Kansas City zones in 1996. The Shulte well was drilled to a total depth of 3836 ft. and was targeted to reach the Granite. Closest production lies over five miles away in the multipay Thirty-Six oil field where the LKC, Gorham Sand and Reagan Sand have all produced oil.

#### **8) Downing-Nelson Oil Reports Two New Discoveries**

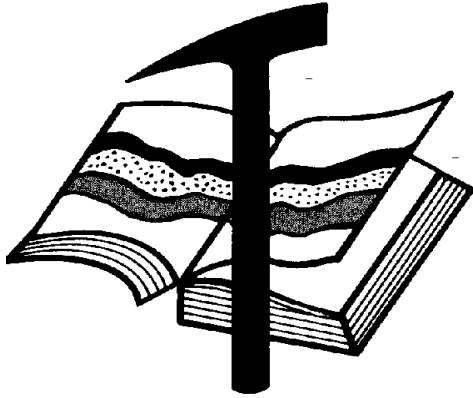
Downing-Nelson Oil Company, Inc., of Hays (KS), has used seismic data to locate and establish two new oil fields in Russell county. First, the Elsie #1-12 has been completed for 45 barrels of oil per day in the SW/4 of section 12- T13s- R22W. The 4108 ft. deep well is producing commingled oil from perforations in the Lansing-Kansas City from 3665 to 3669 ft. and the Arbuckle from 3991 to 3995 ft. The well is isolated from production found over one-half mile to the northeast in the Ogallah South Field.

#### **9) In the NW/4 of section 13- T13s- R22W,**

Downing-Nelson Oil has also completed their Leland #1-13 for 45 barrels of oil per day. The well found productive Lansing-Kansas City zone from 3628 to 3632 ft. Total depth of the well is 4108 ft. Site lies three-quarters mile southwest of the Ogallah South Field, about four miles south and one-half mile east of Ogallah, Kansas. Both new fields await a name.

#### **10) Crawford Oil Co. Finals Trego Wildcat Well**

Cherokee Sand has produced oil at a wildcat well drilled by Crawford Oil Company of El Dorado, Kansas. The #1-5 Schmidt, spotted in SW/4 in section 5- T15s- R21W, Trego County, is on pump at an undisclosed production rate at site located over three-quarters mile east of the Karis North Field. Crawford Oil discovered the Karis North Field last year with the completion of the #1-6 Schmidt in section 6 for 107 barrels of oil per day from the Cherokee Sand at a depth from 4053 to 4057 ft. The latest discovery on the Schmidt lease lies nine and one-quarter miles north and two miles east of Brownell, Kansas. The new field has not been named.



# Kansas Geological Foundation

Web Site: [www.kgfoundation.org](http://www.kgfoundation.org)

**212 North Market  
Wichita, Kansas 67202**

A not-for-profit educational and scientific corporation

## GOALS:

- promote geology and earth science
- preserve geological records
- establish memorials and endowments
- support field trips and seminars
- financial aid and grants to students

**PLEASE HELP SUPPORT THE FOUNDATION**

## Kansas Geological Foundation Services

The Kansas Geological Foundation provides the following services as a part of the organization's commitment to educate the public regarding earth science.

### Speaker's Bureau

A list of speakers available to talk about various aspects of geology may be obtained by contacting Janice Bright at the KGS Library, 265-8676. This service is free to the public.

### Videotape Library

The KGF maintains a videotape library focused primarily on the various fields of earth science. These tapes may be checked out without charge by the public. To obtain a list of tapes, please contact the KGS Library, 212 N. Market, Ste. 100, Wichita, KS 67202, or call Janice Bright at 265-8676.

The Kansas Geological Foundation was founded in March, 1989 as a not-for-profit corporation under the guidelines of section 501(c)(3) of the tax code to provide individuals and corporations the opportunity to further the science of geology. It is dedicated to providing charitable, scientific, literary and educational opportunities in the field of geology for the professional geologist as well as the general public.

KGF can receive in-kind donations through which the donor may receive a tax deduction. Of equal importance, the KGF provides the financial resources to sort, process and file this data at the KGS library. If you have a donation to make, please contact the KGF at 265-8676.

Your tax-deductible membership donation helps to defray the cost of processing donations and to support public education programs about the science of geology. Annual membership begins at \$50.00 per year. Donations of \$100.00 or more are encouraged through the following clubs:

<b>Century Club</b>	\$ 100 to \$ 499
<b>\$500 Club</b>	\$ 500 to \$ 999
<b>Millennium Club</b>	\$1000 to \$5000
<b>President's Club</b>	\$5000 and over

# Book Review

## Fossils and Flies

by Elizabeth Noble Shor

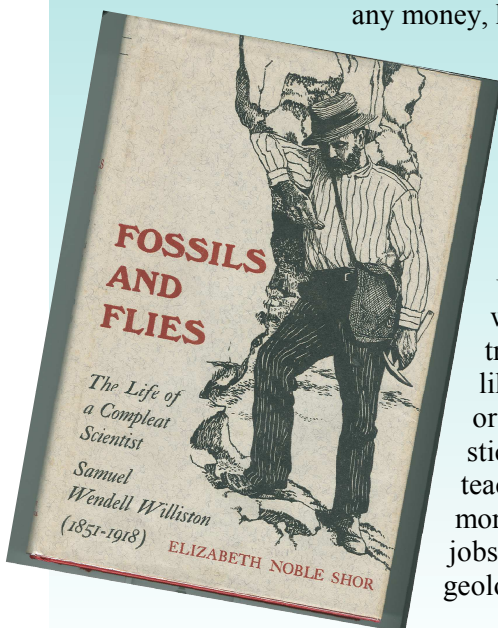
This book reviews the life and times of Samuel Wendell Williston (1851-1918) which the author describes as “the life of a Compleat Scientist.” He was a Geologist, Paleontologist, Entomologist, and Medical doctor.

After arriving in Manhattan, Kansas from the East as a youth, he attended and graduated from Kansas Agricultural College. (The geology club at K-State is named the Williston Geology Club). He later taught geology and medicine at the University of Kansas (12 years) and the University of Chicago where he was primarily involved with the teaching of paleontology.

Of great interest are the many fossil collecting trips to Western Kansas as well as Colorado and Wyoming. Of particular interest is his advice to a young school teacher, Charles Gould, who later founded the Department of Geology at the University of Oklahoma and founded the Oklahoma Geological Survey.

Quoting from Gould, “During the various talks we have had while out in the hills together, I told him something of my hopes and aspirations and that I was considering becoming a geologist. He endeavored to dissuade me. Among other things he said, ‘it’s a dog’s life, Gould, and there is nothing in it.’ A geologist never makes any money, he works hard all

his days, he is called a fool and a crank by nine-tenths of the people he meets, and he lives and usually dies unappreciated. I would advise you to try something easy, like law or medicine or selling shoes, or stick to school teaching. There is more eating in those jobs than there is in geology.”



Reviewed by Bob Cowdery

Thanks to Rebecca Radford for her pictures from the Arbuckle Mountains of southern Oklahoma. The cross-section on the billboard shows the anticlinal nature of what was once a prominent mountain range, formed during Mid-Pennsylvanian time. As the second photo shows, the upturned and eroded layers of sedimentary rocks are all that remain after eons of geologic time eroded the mountains into the hills of the present-day southern Oklahoma countryside.



The KGS welcomes you to submit your vacation photos of geologic interest. Submission of photos implies permission to publish in the KGS Bulletin. Please send your submissions with titles or captions and date of the photograph to Rebecca at the KGS Library by mail or e-mail:

Rebecca Radford 265-8676  
[manager@kgslibrary.com](mailto:manager@kgslibrary.com)

212 North Market,  
Wichita, Kansas 67202

## Exercise Your Right to Vote!



**DON'T FORGET TO  
CAST YOUR BALLOT BY  
DECEMBER 15TH**

# Memorial

---

## *To the Life of Karl Becker*

With the passing of Karl Becker on Saturday, the 14th of October, the profession lost one of its most outstanding members, the industry lost a real gentleman and many of us lost a close friend.

Karl was born in Revana, Ohio on November 6th, 1915. His father was an owner and manager of textile mills and for a period, Karl was also involved in the textile business.

Karl's education was geographically varied. He attended grade school in Akron, Ohio, and graduated from High School in Santa Barbara, California. Karl then attended Ohio State University for one year before transferring to Miami of Ohio University. He graduated from Miami in 1939.

He began his employment with Skelly Oil Company as a geologist in 1941. In 1942 Karl joined the Army Air Corp, and in that same year married Virginia Ochs of Atchison, Kansas. Karl's career in the Air Corp included a tour of duty lasting two years and two months with the 379th Bomb Group-Heavy, stationed in England. During this period he obtained the rank of Captain, working as a photo officer.

Following the war, Karl spent some time in the textile business before returning to the University of Kansas to further his education. There he studied under the renowned geologist Dr. Raymond C. Moore and worked as a graduate assistant.

In 1951, Karl rejoined Skelly Oil, working under Harold Smedley, District Geologist, in their Wichita office. He joined Petroleum, Inc. in 1953 as District Geologist for Kansas. After three years with Petroleum, Inc., Karl

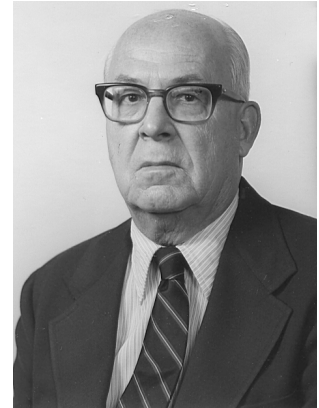
became Executive Vice-President of Sierra Petroleum, and in that position he was very successful at finding reserves of oil and gas.

Karl was very active in the Kansas Geological Society, serving as Secretary-Treasurer, and in 1958 as President. In 1986 he was recognized for all his efforts and participation by being awarded Honorary Membership. Karl also held offices in the American Association of Petroleum Geologists. He was active in the Society of Independent Professional Earth Scientists and the Petroleum Club. He was a member of the Advisory Board (Geology Department of his Alma Mater, the University of Kansas).

Karl is survived by Virginia, his wife of 64 years, and a brother, William Becker of Northwood, New Hampshire. Surviving sons and daughters are: Dr. Karl Becker Jr. (Gail); Paul Becker (Sharon); Ruthie Gillespe (James); and Bruce Becker. There are also 8 surviving grandchildren and three great-grandchildren.

The family has designated these memorials: Kansas Geological Foundation, Alzheimer's Association and Harry Hines Memorial Hospice.

Karl was one of our own who will be missed by all.

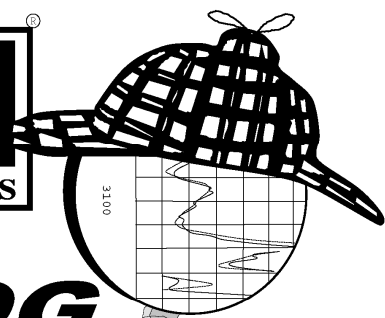
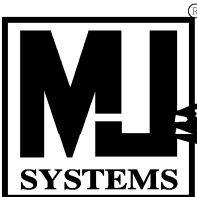


---

Other members who have recently passed on and deserve remembering are:

Charles P. Kaiser, 89, died Sept. 29, 2006. Survivors include his wife, Velma; children, Phyllis Brenneisen, Jean Frankel, Joseph Kaiser, Sara McShane, Jon Kaiser; 2 stepchildren; sisters, Charlotte Hedrick, Rachel Johns; 14 grandchildren. Walker-Brown Funeral Home, Bartlesville, Okla.

Clyde M. Becker, of Ponca City, Oklahoma, formerly of Kansas, died Wednesday, October 4, 2006. Clyde was born July 2, 1928 in Chickasha, Okla., the youngest of eight siblings to Clyde M. Becker, a prominent early Oklahoma geologist, and Bessie Gray Becker. Clyde is survived by his wife Anita; his children, Clyde Jr. and wife Pam of Evergreen, Colo., Sally Wells and husband Howard of Ponca City, Okla., Susan Phillips and husband Bill of Monterey, Calif.; seven grandchildren, Julia, Ross and Wade Becker, Chris and wife Stephanie Wells and Susan Wells, Thomas and Erin Phillips, as well as one great-grandchild who is expected in February of next year; brothers, Phillip and Donald of Midland, Texas; and numerous nieces and nephews.



**LOG**  
**Sleuth**  
**2000**

**AND RASTER IMAGE**  
**WELL LOGS**

**OVER**  
**5 MILLION**  
**LOGS**  
**AVAILABLE**

**1-800-310-6451**

**SALES@MJLOGS.COM**

**CALGARY • DENVER**

**U.S.A.**  
**LOGS FOR:**

**ALABAMA**  
**ALASKA**  
**ARKANSAS**  
**ARIZONA**  
**CALIFORNIA**  
**COLORADO**  
**FLORIDA**  
**IDAHO**  
**ILLINOIS**  
**INDIANA**  
**KANSAS**  
**LOUISIANA**  
**MICHIGAN**  
**MISSOURI**  
**MISSISSIPPI**  
**MONTANA**  
**NEBRASKA**  
**NEVADA**  
**NEW MEXICO**  
**NORTH DAKOTA**  
**OKLAHOMA**  
**OREGON**  
**SOUTH DAKOTA**  
**TEXAS**  
**UTAH**  
**WASHINGTON**  
**WEST VIRGINIA**  
**WYOMING**

**CANADIAN**  
**LOGS FOR:**

**ALBERTA**  
**BRITISH COLUMBIA**  
**SASKATCHEWAN**  
**MANITOBA**  
**FEDERAL AREAS**

# KGF Memorials

KGF Member	Date Deceased	Memorial Established	KGF Member	Date Deceased	Memorial Established
Dan Bowles	09/89	1990	Warren E. Tomlinson	01/00	2000
John Brewer	10/89	1990	James A. Morris	01/00	2000
George Bruce	08/89	1990	Eric H. Jager	03/00	2000
Robert Gebhart	01/90	1990	Kenneth W. Johnson	03/00	2000
Ray Anderson, Jr.	11/90	1990	Dean C. Schaake	03/00	2000
Harold McNeil	03/91	1991	Fred S. Lillibridge	05/00	2000
Millard W. Smith	08/91	1991	Jerry A. Langrehr	07/00	2000
Clinton Engstrand	09/91	1991	Clark A. Roach	07/00	2000
M.F. "Ted" Bear	10/91	1991	Floyd W. "Bud" Mallonee	10/00	2000
James & Kathryn Gould	11/91	1991	Ralph W. Ruuwe	09/00	2000
E. Gail Carpenter	06/91	1993	Robert L. Slamal	02/01	2001
Benton Brooks	09/92	1992	Jerold E. Jespersen	06/01	2001
Robert C. Armstrong	01/93	1993	William A. Sladek	06/01	2001
Nancy Lorenz	02/93	1993	Harlan B. Dixon	06/01	2001
Norman R. Stewart	07/93	1993	Edward B. Donnelly	08/01	2001
Robert W. Watchous	12/93	1993	Richard P. Nixon	02/02	2002
J. George Klein	07/94	1994	Robert W. Frensley	12/01	2002
Harold C.J. Terhune	01/95	1995	Gerald W. Zorger	01/02	2002
Carl Todd	01/95	1995	Don L. Calvin	03/02	2002
Don R. Pate	03/95	1995	Claud Sheats	02/02	2002
R. James Gear	05/95	1995	Merle Britting		2002
Vernon Hess	06/95	1995	Harold Trapp	11/02	2002
E. K. Edmiston	06/95	1995	Donald M. Brown	11/02	2003
Jack Rine	07/95	1995	Elwyn Nagel	03/03	2003
Lee Cornell	08/95	1995	Robert Noll	09/03	2003
John Graves	10/95	1995	Benny Singleton	09/03	2003
Wilson Rains	10/95	1995	Jay Dirks		2003
Heber Beardmore, Jr.	09/96	1996	J. Mark Richardson	02/04	2004
Elmer "Lucky" Opfer	12/96	1996	John "Jack" Barwick	02/01	2004
Raymond M. Goodin	01/97	1997	Richard Roby	03/04	2004
Donald F. Moore	10/92	1997	Ruth Bell Steinberg		2004
Gerald J. Kathol	03/97	1997	Gordon Keen	03/04	2004
James D. Davies	08/88	1997	Lloyd Tarrant	05/04	2004
R. Kenneth Smith	04/97	1997	Robert J. "Rob" Dietterich	08/96	2004
Robert L. Dilts	05/97	1997	Mervyn Mace	12/04	2004
Delmer L. Powers	06/72	1997	Donald Hoy Smith	04/05	2005
Gene Falkowski	11/97	1997	Richard M. Foley	06/05	2005
Arthur (Bill) Jacques	01/98	1998	Wayne Brinegar	06/05	2005
Bus Woods	01/98	1998	Jack Heathman	05/06	2006
Frank M. Brooks	03/98	1998	Charles Kaiser	09/06	2006
Robert F. Walters	04/98	1998	Rod Sweetman	08/06	2006
Stephen Powell	04/98	1998	Karl Becker	10/06	2006
Deane Jirrels	05/98	1998			
William G. Iversen	07/98	1998			
Ann E. Watchous	08/98	1998			
W.R. "Bill" Murfin	09/98	1998			
Donald L. Hellar	11/98	1998			
Joseph E. Rakaskas	01/99	1999			
Charles W. Steincamp	02/99	1999			
Robert and Betty Glover	10/96	1998			
Howard E. Schwerdtfeger	11/98	1999			
W. W. "Brick" Wakefield	03/99	1999			
V. Richard Hoover	01/00	2000			



## All Around You

**Weatherford has always been driven by your needs.**

Now, with the addition of Precision Energy Services we're continuing to build a world of skills, services and technologies that revolve – and evolve – around you.

### **The result?**

An expanded global network of 25,000 people, 730 service bases and 87 manufacturing facilities in 100 countries.

This increased local knowledge and service is there to support you anywhere, anytime. From midday in the Middle East to midnight in the middle of nowhere.

And with greatly strengthened capabilities in the critical evaluation skills of directional drilling and wireline logging, we can do even more to improve the profitability and productivity of your wells.

To see how our sphere of services can work for you, visit [www.weatherford.com](http://www.weatherford.com) or contact either your Weatherford or former Precision Energy Services representative.

Drilling | Evaluation | Completion | Production | Intervention

Kansas Geological Society & Library  
 212 North Market, Suite 100  
 Wichita, Kansas 67202

PRSRT STD US POSTAGE PAID WICHITA KS PERMIT NO 923
--

KGS BULLETIN  
 November—December 2006

## November 2006

Sun	Mon	Tue	Wed	Thu	Fri	Sat
			1	2	3	4
5	6	7	8 Tech Talk <i>"A Geologist's View Of Evolution"</i>	9	10	11
12	13	14 KGS Board Meeting	15 Tech Talk <i>TBA</i>	16	17	18
19	20	21	22	23 Library Closed	24	25
26	27	28	29 Tech Talk <i>"About Equus Beds"</i>	30		

## December 2006

Sun	Mon	Tue	Wed	Thu	Fri	Sat
					1	2
3	4	5	6 Tech Talk <i>TBA</i>	7	8	9
10	11	12 KGS Board Meeting	13 Tech Talk <i>"Kanorado Revisited"</i>	14	15 Election Ballots Due	16
17	18	19	20 Tech Talk <i>"Gemstones"</i>	21	22	23
24 31	25 Library Closed	26	27	28	29	30