



Established 1925

KANSAS GEOLOGICAL SOCIETY

BULLETIN

Volume 82 Number 3

May—June 2007

IN THIS ISSUE

Geo-Scenes

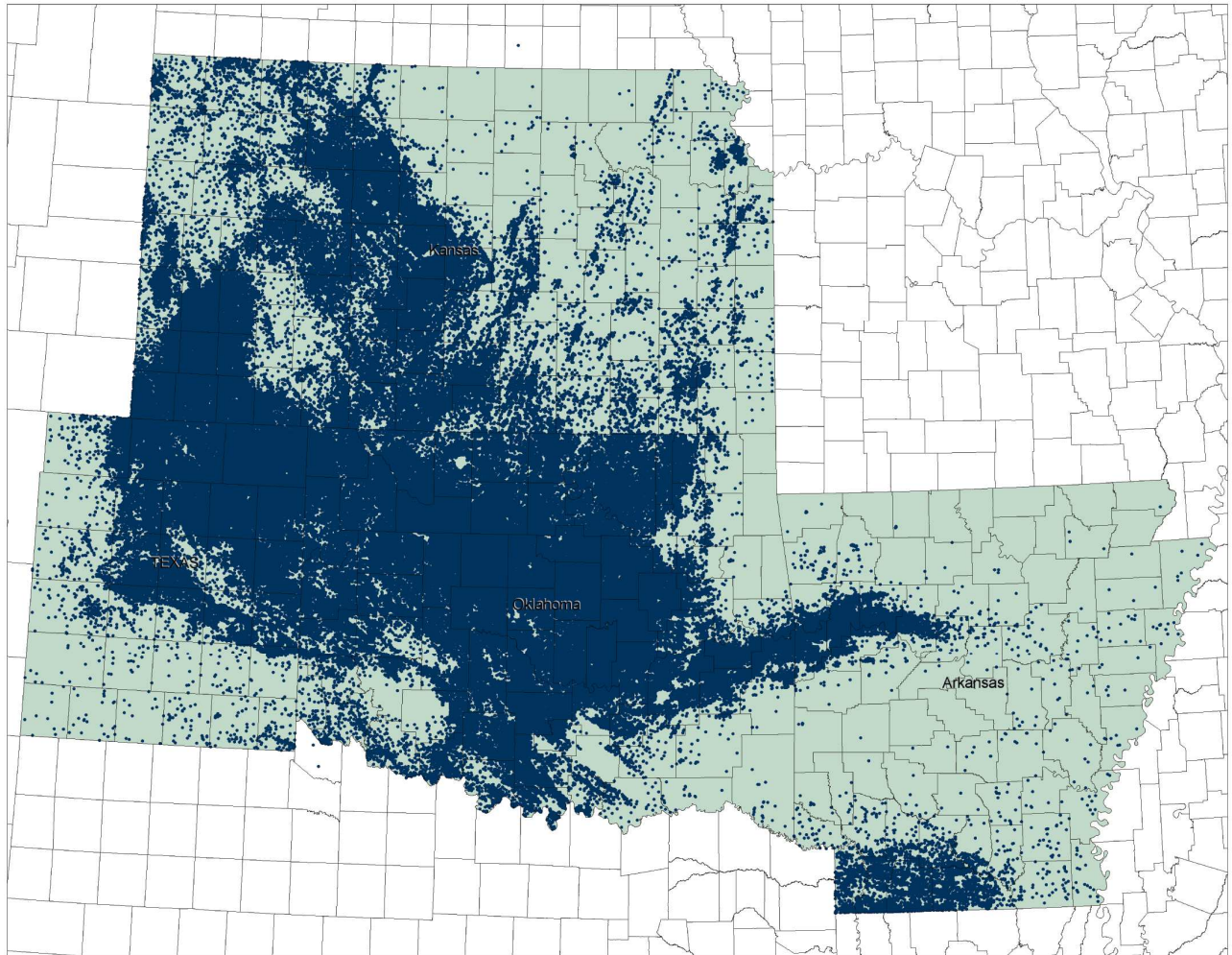
**Member Profile:
Hal Brown**

**Memorial:
Eldon Frazey**

**Karst Features of
Carbonate Rocks —
Relating the Surface to
the Subsurface**

Page 10





Mid-Continent:
ARE YOU READY?

Exploration and development activity is on the rise. As you seek to capitalize on the industry's momentum, don't let well log data get in the way. No company has removed more barriers between people and their well log data than A2D Technologies. With coverage of all the crucial wells in the Mid-Continent, North America and hydrocarbon provinces worldwide, A2D will get you ready for the opportunities to come.



Your Well Log Data Marketplace

www.a2d.com

Table of Contents

Geo-Scenes:

Surficial Kart Features (Landforms) along Unconformities on Carbonate Rocks	10
<i>by Sal Mazzullo: Technical Editor, Professor of Geology, WSU</i>	

Features:

Honorary Member Profile:	
Hal Brown..	12
Memorial:	
Eldon Frazey	16

Departments & Columns:

President's Letter	7
From the Manager.....	9
CD's & DVD's	24
Professional Directory	19
Advertiser's Directory	17
KGS Tech Talks	6
Kansas Geological Foundation	23
Exploration Highlights	21
KGF Memorials.....	26

ON THE COVER:

Several of the most prolific hydrocarbon reservoirs in Kansas are found beneath major unconformities along the tops of the Arbuckle, Viola, Hunton, and Mississippian. Such reservoirs (subunconformity types) variously are present in porous and permeable limestone, dolomite, chert, and in some cases spiculite.

CALL FOR PAPERS

The Kansas Geological Society Bulletin, which is published bimonthly both in hard-copy and electronic format, seeks short papers dealing with any aspect of Kansas geology, including petroleum geology, studies of producing oil or gas fields, and outcrop or conceptual studies. Maximum printed length of papers is 5 pages as they appear in the Bulletin, including text, references, figures and/or tables, and figure/table captions. Inquiries regarding manuscripts should be sent to Technical Editor Dr. Sal Mazzullo at salvatore.mazzullo@wichita.edu, whose mailing address is Department of Geology, Wichita State University, Wichita, Kansas 67260. Specific guidelines for manuscript submission appear in each issue of the Bulletin, which can also be accessed on-line at the Kansas Geological Society web site at <http://www.kgslibrary.com>

Mark Your Calendars

AAPG

Mid-Continent Convention

September 9-11, 2007

Wichita, Kansas

Airport Hilton Hotel and Convention Center

- ◆ Field Trips: The Oread Group in Eastern Kansas
 - ◆ Kansas Underground Salt Mine Museum
 - ◆ 3-D Seismic Short Course

For more information:
Kansas Geological Society
316-265-8676
www.kgslibrary.com



Kansas Geological
Foundation's

Annual Spring Mixer

When? Thursday, May 24

Time? 4:30—8:00 PM

Where? Petroleum Club

You don't have to be a member to attend, the idea is to bring in **NEW PEOPLE**—so bring a friend and come to the **PARTY!!**



FULL LINE SUPPLY STORE

With Pump Shop
Offering New & Used
Pipe, Equip. & Fittings
Employee Owned

New Office

Hugoton, KS
620-428-6604

STORES

Ness City, KS
800-589-5733

El Dorado, KS
316-321-9323

Garden City, KS
877-976-1700

Spivey, KS
316-532-5261

McCook, NE
308-345-1542

SALES OFFICES

Wichita, KS
800-777-7672

Great Bend, KS
316-792-3130
Mob: 316-786-4255

MBC

WELL LOGGING & LEASING
UNMANNED GAS DETECTORS
MUD LOGGING
CERTIFIED INSTRUMENT TECH
SERVING THE KAN-O-TEC AREA
SINCE 1990

AUSTIN GARNER

MARLA GARNER

24-HOUR PHONE (620) 873-2953

MEADE, KANSAS



BOARD OF DIRECTORS

PRESIDENT Philip M. Knighton	PRESIDENT-ELECT Ernie Morrison
SECRETARY Rick Saenger	TREASURER Doug Davis
DIRECTORS Chuck Brewer Beth Isern Robert Stolzle	ADVISORS Debra FitzGerald Robert O'Dell

COMMITTEE CHAIRMEN

<u>Advertising</u>	Kent Scribner
<u>Advisory</u>	Debra FitzGerald Robert O'Dell
<u>Annual Banquet</u>	Doug Davis
<u>Bulletin</u>	<i>Editor</i> Marc Summervill <i>Technical Editor</i> Sal Mazzullo
<u>Continuing Education</u>	Robert Cowdery
<u>Distinguished Awards</u>	Chuck Brewer Larry Richardson
<u>Directory</u>	Kent Matson
<u>Environmental</u>	Larry Skelton
<u>Field Trip</u>	Randy Teter
<u>Fishing Tournament</u>	
<u>Future Plans</u>	
<u>Golf</u>	Kevin Davis John Hastings Larry Skelton
<u>Historian</u>	Steve Stribling
<u>Investment</u>	Roger Martin
<u>Library</u>	Ted Jochems Larry Friend
<u>Membership</u>	John H. Morrison, III
<u>Nomenclature</u>	Kimberly Dimmick-Wells
<u>Picnic</u>	Robert Cowdery
<u>Public Relations</u>	Larry Richardson
<u>Shooting Tournament</u>	Robert Cowdery
<u>Technical Program</u>	Bill Shepherd
<u>Ticket Sales</u>	

A.A.P.G. DELEGATES

Ernie Morrison	Robert Cowdery	Alan DeGood
2008	2006	2006

BULLETIN STAFF

EDITORS

Marc Summervill: Editor
Woolsey Energy Corporation (316) 267-4379
msummervill@woolseyco.com

Sal Mazzullo: Technical Editor
salvatore.mazzullo@wichita.edu (316) 978-7211

ADVERTISING

Kent Scribner
Stelbar Oil Corp. (316) 264-8378

PROFILES/MEMORIALS

Robert D. Cowdery
Consultant (316) 267-9030

EXPLORATION HIGHLIGHTS

John H. Morrison, III
Independent O&G (316) 263-8281

STATE SURVEY

Rex Buchanan
KS Geological Survey (785) 864-3965

SOCIETY NEWS

KGS Library (316) 265-8676

EDITOR EMERITUS

Wes Hansen (316) 263-7313

K.G.S. LIBRARY

PHONE 316-265-8676 FAX 316-265-1013
email: frontdesk@kgslibrary.com
Web: www.kgslibrary.com

LIBRARY MANAGER

Rebecca Radford 265-8676
manager@kgslibrary.com

The KGS *Bulletin* is published bi-monthly by the Kansas Geological Society, with offices at 212 North Market, Wichita, Kansas 67202 Copyright 2006, The Kansas Geological Society. The purpose of the *Bulletin* is to keep members informed of the activities of the Society and to encourage the exchange and dissemination of technical information related to the Geological profession. Subscription to the *Bulletin* is by membership in the Kansas Geological Society. Limited permission is hereby given by the KGS to photocopy any material appearing in the KGS *BULLETIN* for the non-commercial purpose of scientific or educational advancement. The KGS, a scientific society, neither adopts nor supports positions of advocacy, we provide this and other forums for the presentation of diverse opinions and positions. Opinions presented in these publications do not reflect official positions of the Society.

TRILOBITE TESTING INC

Eleven Trucks Serving
Kansas - Colorado - Texas
Nebraska - Illinois

Slickline services using the same
Alpine Electronic Pressure
Guages as used on DST's

Back pressure testing (G1 & G2)
DST's

1-800-728-5369

FAX: 1-785-625-5620
trilobite @eaglecom.net

SHOPS LOCATED IN:

Hays, KS

Scott City, KS

Pratt, KS

Hugoton, KS

Clay City, IL



CAN YOU NAME THE CRITTER?

Sponsored by Trilobite Testing, Inc.

Is your paleo up to date?

If you know the name of the trilobite,
submit your guess to Wes Hansen at
316-263-7313 or via e-mail at
manager@kgslibrary.com

Remember that Trilobite Testing is
sponsoring your efforts, so be sure to thank
Paul Simpson the next time that you see him.

**Bulletin committee members and PhD's in
Paleontology are prohibited from entering.**

KGS Tech Talks

***May 8—Tuesday—Larry Skelton, "An
old well in downtown Wichita"***

***May 14—Larson & Company, "Taxation
Issues in Funding Oil & Gas
Exploration & IRAs—401Ks"***

May 21—Video Talk: "Geo Families"

***There are no scheduled talks
For the months of June, July &
August. We will resume talks in
September.***

The fall dates will be :

Sept. 17th & 24th

Oct. 15, 22, 29

Nov. 5, 12, 19

Dec. 3, 10, 17

Attention!

New Location for Technical Meetings

***All KGS technical presentations are held at
12:30 p.m. at the***

***Wichita Bar Association, located at 225 N.
Market, ground floor conference room, unless
otherwise noted.***

***Note: For those geologists who need 30 points
to renew their licenses, there will be a sign-in
sheet at each presentation and also a
certificate of attendance.***

President's Letter

Dear Members,

Everything is proceeding according to plan. The golf tournament, June 11, at Hidden Lakes, is being planned, the fishing tournament will be history when you read this, the software for the Walters Digital Library is going to be installed for 'beta' users next week (April 23rd) and seminars are planned for the users, folks are buying logs, and a Geofest is planned for this fall after the AAPG Regional Convention. Kimberly Dimmick-Wells is chairing the KGS picnic committee. Date and place will be announced soon. Thanks Kimberly and all the KGS committee members for all their work this year.

Key aspects of the new software are the ability for integration with our database WinScout, the ability to get all the corrections entered and update all the cards and logs we have been unable to link. This data has been scanned and is waiting for the new "admin" program to be entered and accessible. Unlike the old software, I understand it only has to be entered once rather than four or five times. We should get this caught up fairly quickly.

Gus Messenger is working on a deal for a great addition to the library database in a private collection of core log information. Gus' tireless efforts to organize our neglected core log data have been a monumental effort. Thanks Gus.

Randy Koudelle is exploring an idea to obtain older LAS log files for our library. That would be a wonderful addition to our database for those who use computer-generated logs and cross-sections. It would be a shame to lose these older files because no one has systematically asked for them.

Those who missed the Geomorphology talk missed a fantastic one. It was full of Kansas examples. Bob Cowdey is to be complimented on the many fine talks he has brought to our society. It is amazing that Bob gets these wonderful speakers who pay their own way to give us free first class information. Many societies have to pay speakers fees, their transportation and accommodations. Our last speaker, Bob Davis with Schlumberger, marveled at our frequency for our talks and commented most societies struggle to get one talk per month.

Bob also mentioned to me that the outstanding collection of science and geology related DVD's, video's and materials as well as our speakers bureau are available for area Science teachers and educators. This is way under utilized. If anyone has connections with the local science teachers, we need to know how to get the word out that these things are available. We also have lots of items that are useful for members own education and exploration. Check it out.

We plan to do a little rock-hounding this summer. Chris has her eye on a two ton Blue River rock in Breckenridge that would look nice in our front yard. Anyone coming back this way with a flatbed truck, please call. Have fun this summer, y'all.

Philip M. Knighton





Security for AAPG Members
& Their Families
Through Group Insurance

*Life
Health
Dental
Disability
And Supplemental Plans*

AAPG's
GeoCare Benefits Insurance Program
P. O. Box 9006
Phoenix, AZ 85068-9006
800-337-3140
E-mail: geocarebenefits@agia.com
www.geocarebenefits.com

ATTENTION!

***INTERESTED IN
BUYING CARD SETS,
CABINETS, ETC.??***

*Larry Friend and Ted Jochems invite
you to submit your e-mail address to an
automatic notification list when such
things come up for sale.*

Contact: KGS Library

265-8676

AAPG Annual Meeting Long Beach, CA

This will be a short report of what transpired at the meeting held April 1-4

House of Delegates – The Kansas Geological Society was well represented by Alan DeGood and Ernie Morrison. The main business that transpired was a vote to allow lower rates for membership for potential members from areas of the world less prosperous than the US. After a parade of members addressing the subject (two against and approximately 20 for) the measure was overwhelmingly passed. Elected as Chairman-Elect of the H of D was George Bole of Houston and Secretary/Editor Robert Webster of Dallas. It is of some interest to note that all four of the candidates for these positions were from Texas.

At the Awards ceremony on Sunday the two highest awards of the AAPG were presented: Sidney Powers to Dr. Arnold Bouma, retired professor from LSU and the Michael T. Halbouty Award to John Amoruso of Houston.

The attendance at the meeting was over 5260 and there were 200 plus exhibitors. The KGS had an excellent position in the exhibit hall next to the Kansas Geological Survey and on an aisle very close to the large AAPG exhibit, thus there was good traffic going by the booth. It was manned by Rebecca Radford, manager, with help from others.

KGS members attending included: Ernie Morrison, Alan DeGood, Dave Barker, Dan Reynolds, Paul Gerlach, Marty Dubois, John Doveton, Lee Gerhard, Dan Merriam, Susan Nissen and Mary Hubbard.

Newest Trustee of the AAPG Foundation is William Barrett of Denver, but originally from a farm north of Topeka.

- Submitted by Bob Cowdery

From The Manager

Dear Members,

First it's spring, then it isn't.....you can always count on crazy weather in Kansas, right?

Well, I had a good trip to Long Beach for the AAPG 2007 convention. We had good traffic at our booth as we were showing the new software for the Walters Digital Library. Some of our digital members were out there and got to see it first hand, and we had a lot of other states & companies looking at it and scratching their heads about all we have accomplished. We hope to have the software out to the digital membership sometime in May and we should be having some "show & tells" sometime in late April or early May. Anyone interested, member or not, should plan to attend one of these special meetings so you can see just what all the hoopla is about.



The library is getting extremely busy again and I am so glad to welcome Sherri Gruenwald back into the fold. She has stepped back into the groove of things and it has made life much easier for all of us. Please join us in welcoming her back.

The Foundation has scheduled the Spring Mixer for Thursday, May 24th this year. Also, we have the KGS Annual Golf Tournament coming up June 11th (a Monday) back at Hidden Lakes course outside Derby. I have ordered up a wonderful day (remember last year?), no rain, no lightening, just lots of sun and a cool breeze. Hope to see a good turnout this year.

Respectfully submitted,

Rebecca Radford
Manager



Booth at Long Beach AAPG Convention

Editor's Note: This new section of the bulletin will periodically feature scenes of geological interest in Kansas and from anywhere else in the world, or for that matter, on other planets in our solar system. All readers are encouraged to submit such images along with short, explanatory captions as illustrated below. Send all submissions via electronic format (images as jpegs, and separately, text in Microsoft Word or WordPerfect format) to the technical editor, Sal Mazzullo, at either salvatore.mazzullo@wichita.edu or dolomite@cox.net.

Surficial Karst Features (Landforms) along Unconformities on Carbonate Rocks

Several of the most prolific hydrocarbon reservoirs in Kansas are found beneath major unconformities along the tops of the Arbuckle, Viola, Hunton, and Mississippian. Such reservoirs (subunconformity types) variously are present in porous and permeable limestone, dolomite, chert, and in some cases spiculite. Geologists typically map the tops of these units as structural features, knowing full well that they actually represent structurally modified paleogeographic (paleotopographic) surfaces whose paleogeomorphologic development was related mainly to processes included under the broad umbrella of karstification. Such processes are dominated by meteoric (fresh-water) dissolution of carbonate rocks, and they result in relatively small-scale features such as sinkholes, dolines, and caves and caverns along regional paleotopographic surfaces. Such surfaces may include, on a larger scale, buried hills (including karst towers) of various elevation and dimension and intervening valleys or topographically lower areas between hills. The regional geomorphologic character of such paleotopographic surfaces varies greatly, and it reflects differences in rock porosity and permeability, presence or absence of fractures (and faults), structural attitude of subcropping strata, climate, bedding thickness and specific lithology of the rocks, and other factors. Notwithstanding faults, any exploration geologist who has mapped the tops of the Arbuckle, Viola, Hunton, or Mississippian is well aware of the differences in paleotopographic relief, related to karstification, along the unconformable tops of these units.



Figure 1 - Smooth karst surface with sinkholes (black arrows) and shallow dolines (white arrow) along the top-of-Pleistocene (138,000 years old) limestone on Ambergris Caye in Belize.

In many cases in science we see that small-scale characteristics of features often mimic larger-scale features, and this coincidence is especially true along unconformities. The two photographs herein (Figures 1 and 2) are examples of such coincidence. These photos are of the top of the Pleistocene limestone on Ambergris Caye in northern Belize. The limestone is radiometrically dated at 138,000 years old. The small-scale features along the unconformity surface here are similar to those found in the subsurface of Kansas in Arbuckle, Viola, Hunton, and Mississippian rocks. Figure 1, for example, shows a relatively smooth unconformity surface comprising low, rounded hills and intervening low areas. When these low areas are relatively shallow and flat, they are referred to as dolines. Such features can be of various areal dimensions, and they typically are manifested in the subsurface as low and relatively flat "structural" areas. Scattered across this low-relief geomorphic surface are small, rounded sinkholes that commonly connect to subsurface caves and caverns. This topography resembles, for example, that along the top of the Mississippian in central Kansas (e.g., Ness County) and eastern Kansas (e.g., Butler County). In these areas hydrocarbon production commonly is from relatively low, rounded buried hills of various dimension. Many of you undoubtedly

can recall tales of drilling along the flanks of a high, or even the top of a high on the Miss, and unfortunately hitting a low spot (sinkhole) along that surface.

In contrast, Figure 2 shows a rugged topographic surface of relatively high, jagged knobs (across the middle of the photo) that pass rapidly into an almost flat geomorphic surface (in the foreground of the photo). On the small scale these knobs comprise what



Figure 2 - Rugged karst surface (a.k.a. “phytokarst”) with steep, jagged pinnacles adjoining flat, smooth surface (in foreground) along the top-of-Pleistocene (138,000 years old) limestone on Ambergris Caye in Belize.

is referred to as “phytokarst”, whereas on the larger scale they would comprise buried hills. Hydrocarbon production from buried hills is common throughout subsurface Kansas. If we were considering the Arbuckle, Viola, Hunton, or Miss in the subsurface, then note that: (i) one can go from a high at one drilling location (labeled #1 on the figure) to being flat and very low at an offset location (labeled #2 on the figure); and (ii) the change in the sub-regional character of the geomorphic surface along an unconformity, for example from buried hills to flat areas, can be very abrupt.

submitted by Sal Mazzullo

Nebraska

•

Kansas

Colorado

•

Kansas

Colorado

•

Kansas

Colorado

•

Kansas

Colorado

•

Kansas

Colorado

•

Kansas

Colorado

•

Kansas

Colorado

•

Kansas

Colorado

•

Kansas

Colorado

•

Kansas

Colorado

•

Kansas

Colorado

•

Kansas

Colorado

•

Kansas

Colorado

•

Kansas

Colorado

•

Kansas

Colorado

•

Kansas

Colorado

•

Kansas

Colorado

•

Kansas

Colorado

•

Kansas

Colorado

•

Kansas

Colorado

•

Kansas

Colorado

•

Kansas

Colorado

•

Kansas

Colorado

•

Kansas

Colorado

•

Kansas

Colorado

•

Kansas

Colorado

•

Kansas

Colorado

•

Kansas

Colorado

•

Kansas

Colorado

•

Kansas

Colorado

•

Kansas

Colorado

•

Kansas

Colorado

•

Kansas

Colorado

•

Kansas

Colorado

•

Kansas

Colorado

•

Kansas

Colorado

•

Kansas

Colorado

•

Kansas

Colorado

•

Kansas

Colorado

•

Kansas

Colorado

•

Kansas

Colorado

•

Kansas

Colorado

•

Kansas

Colorado

•

Kansas

Colorado

•

Kansas

Colorado

•

Kansas

Colorado

•

Kansas

Colorado

•

Kansas

Colorado

•

Kansas

Colorado

•

Kansas

Colorado

•

Kansas

Colorado

•

Kansas

Colorado

•

Kansas

Colorado

•

Kansas

Colorado

•

Kansas

Colorado

•

Kansas

Colorado

•

Kansas

Colorado

•

Kansas

Colorado

•

Kansas

Colorado

•

Kansas

Colorado

•

Kansas

Colorado

•

Kansas

Colorado

•

Kansas

Colorado

•

Kansas

Colorado

•

Kansas

Colorado

•

Kansas

Colorado

•

Kansas

Colorado

•

Kansas

Colorado

•

Kansas

Colorado

•

Kansas

Colorado

•

Kansas

Colorado

•

Kansas

Colorado

•

Kansas

Colorado

•

Kansas

Colorado

•

Kansas

Colorado

•

Kansas

Colorado

•

Kansas

Colorado

•

Kansas

Colorado

•

Kansas

Colorado

•

Kansas

Colorado

•

Kansas

Colorado

•

Kansas

Colorado

•

Kansas

Colorado

•

Kansas

Colorado

•

Kansas

Colorado

•

Kansas

Colorado

•

Kansas

Colorado

•

Kansas

Colorado

•

Kansas

Colorado

•

Kansas

Colorado

•

Kansas

Colorado

•

Kansas</

Member Profile



Hal Brown

Native born Kansan and active geologist in Wichita since 1976, Hal Brown has contributed considerable to the geologic effort and exploration success in this area.

He was born January 10, 1930 in Hays, Kansas where his father was a cable tool driller. Hal's mother was a homemaker although when they lived in Winfield, she was credit manager for Montgomery Ward. Hal was one of four sons. Two brothers still living are: Larry in Wichita and Sam in Almsville, Oregon.

Hal attended grade school, Jr. High School and High School in Winfield where he graduated in 1948. He commenced college at Kansas State University, majoring in Soil Conservation, but was called into the Air Force in 1949 and was not discharged until 1953 at Forbes Field in Topeka. During his time in the Air Force, he was stationed for a period of time at Mildenhall, United Kingdom, which is near

Cambridge. There he met Susan Williams, the mother of his three children: Sylvia, now residing in Denton Texas, Steven of Midwest City, Oklahoma and Stephanie, a psychiatrist in Tulsa. While in the service Hal worked as a draftsman and achieved the grade of Staff Sergeant.

After his discharge, Hal returned to Kansas State. There, after taking a course in general geology, he realized he enjoyed geology so much that he changed his major to geology. He also was influenced in part by his father's work in the "oil fields". In the summer of 1955, he worked for the USGS in Grand Junction, Colorado. The USGS was examining trees for radioactivity based on the theory that the tree's roots might extend into Uranium deposits.

Hal graduated from K-State in January 1956. Among his classmates were Gene Ratcliff, later to become Chief Geologist for Kerr-McGee and Paul Strunk, owner of American Shoreline of Corpus Christi. At K-State, Hal was greatly influenced by Dr. Claude Shenkel as were many K-State graduates.

Following graduation, Hal went to work for Pan American Production in Abilene, Texas. While working in Texas he was on an offset to a discovery in the Breedlove Field and in examining the samples discovered some very odd brown items in the samples. He had been exposed by the crew, as many geologists have been early on to walnut shells. In 1957, he worked for a period in Wichita. From 1958 until 1961, he worked in Liberal. While in Liberal Hal encountered the "biggest character", Woody Paul that he can recall. Woody in the past had his own TV show called "Backyard Cooking with Woody". He was also a big promoter, but "honest as the day is long" according to Hal. In 1961, he was transferred to Oklahoma City where he remained until 1967 when the office was closed and he was transferred to Ft. Worth.. In 1970 Hal joined Helmerich and Payne in Tulsa and worked for that company until 1973 when he was employed by Texas Oil and Gas in Oklahoma City. Hal transferred to Wichita in 1976 where he served as District Geologist and later promoted to District Exploration Manager until his retirement from that company in 1985. As an

Independent he maintained an office at American Energies until 1996.

Along the way Hal received helpful advice and mentoring from Jack Hendrickson at Pan-Am, John Mason with Amoco, and Steve Tilman at Texas Oil and Gas.

During his career, Hal has been active in professional societies. He recalls serving on the Board of the KGS. He was President of the Oklahoma City Geological Society for awhile and still maintains a membership in that society. Hal is also a member of the AAPG.

There isn't any doubt that Hal enjoyed his career as a Petroleum Geologist and he has strong words of advice to the young geologist considering a career. "Get a Master's Degree". Hal was working on his Master's at the University of Oklahoma when he worked in Oklahoma City, but with his move to Ft. Worth, he was unable to complete his degree.

Since his retirement, he has engaged in volunteer activities, working as a driver for the Red Cross and also volunteering at the Zoo. He has always enjoyed golf, hunting, fishing and flying. He has owned several different airplanes and has accumulated well over 500 hours in the air. During his employment in Liberal, Hal and his colleagues used to hunt during the noon hour. Although currently, a physical

condition has prevented him from playing golf, one of his goals is to get back on the golf course.

Hal was married to Kay Cochran for seventeen years, but is currently unmarried. Currently he enjoys his family, which includes not only the children, but the grandchildren and three great-grandchildren.

Certainly this brief description does not adequately cover what has been a rewarding and productive career of a Wichita geologist.



WALTERS DIGITAL LIBRARY

The Robert F. Walters

DIGITAL



GEOLOGICAL
LIBRARY

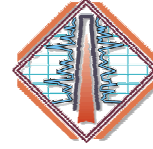
Subscription Service To Kansas Data!

Our web address

www.waltersdigitallibrary.com

The Robert F. Walters

DIGITAL



GEOLOGICAL
LIBRARY

Coming Soon in 2007

The Kansas Geological Society is developing new software to run the digital library

This new software will offer:

- ♦ A much more dynamic and faster interface
- ♦ Updated database (new wells will be added)
 - ♦ Open more than one well at a time
 - ♦ Open many documents at one time
 - ♦ Latitude & Longitude
 - ♦ Much More!

Call to arrange to see the demo for this new software

Pricing of Digital Library Memberships:

- ♦ KGS Library Members = Can subscribe to the Walters Digital Library for \$600.00 / year
- ♦ Non-KGS Library Members = Can Subscribe for \$1500.00 / year

Call Now to Sign Up!!
Toll Free: 877-265-7300
Local: 263-2916



2007 Mid-Continent AAPG Convention
September 9-11, 2007
Wichita, Kansas
Airport Hilton Hotel and Convention Center

Technical Papers and Posters

Field Trips

Saturday September 8, 2007

The Oread Group in Eastern Kansas
Field Trip Leader. Wan Yang, Wichita State University

Sunday September 9, 2007

Kansas Underground Salt Museum
Field Trip Leader Mike Dealy

3-D Seismic Short Course

3-D For Geologists

By

Jim Bogardus and Bill Pramik

Petroleum Geo-Service

Saturday September 8, 2007

Opening Session

September 9, 2007

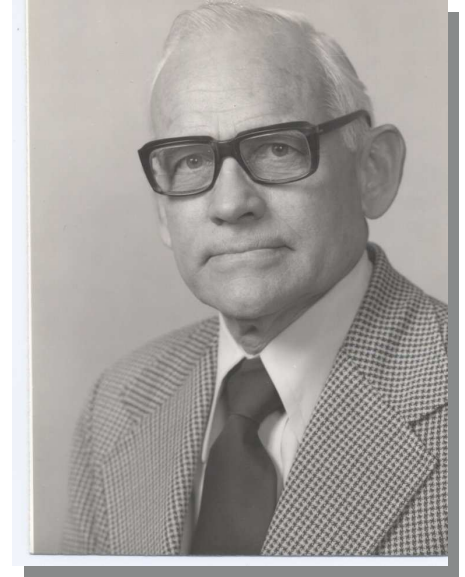
Speaker: State Geologist Bill Harrison

All Convention Luncheon

Keynote Speaker

USGS Director Mark Myers

Eldon Frazey



With the death of Eldon Frazey on February 22nd the industry lost one of its “real gentlemen” and a true professional. Eldon was born in Halstead, Kansas in August 1922 and at that time his father was Superintendent of Schools in Moundridge. With the death of his mother when he was four years old, he went to live with an aunt in Haven. Eldon attended grade school and Haven High School graduating in 1940. He then enrolled in Hutchison Community College and was there from 1940 until 1942. He then enrolled at K-State where remained until 1944 when he was called into the service.

Eldon was in 10 different army camps before being attached to Patton’s 3rd Army in Europe with the Corp of Engineers. He finished his European tour at Branau, Austria and was discharged from the service in 1946 at Ft. Leavenworth. Returning to K-State, Eldon completed his B. S. degree in Geology in 1947. After graduation, Eldon worked a summer for the USGS in Denver. He then joined Cities Service Oil Co. in El Dorado where he remained until 1955 when he was transferred to Wichita.

While in El Dorado he met Joyce Gude and they were married in 1948 and were happily married for 56 years until her death. Joyce and Eldon had four children: Deirdre, now residing in Broken Arrow, Oklahoma, Dick of Evergreen, Colorado, Bill of Bar Nunn, Wyoming and Tom of Jackson, Wyoming.

In 1956, Eldon was transferred by CSO to Casper Wyoming and remained there until 1961 when he was sent to Bartlesville to work in the Operations Department. When the company moved its headquarters to Tulsa in 1971, he moved also and stayed in Tulsa until 1973 when the company once again transferred him to Wichita. In 1983 he retired from CSO.

With retirement, Eldon and Joyce moved to Derby where Eldon pursued his recreational interests of yard work and flowers. Also for over thirty-five years, he and Joyce took their RV to the Grand Tetons of Wyoming.

Eldon had been a member of the Kansas Geological Society for many years and was still a member of the American Association of Petroleum Geologists at the time of his death. While in college, he joined the K-State chapter of the Sigma Gamma Epsilon, geological fraternity, as a charter member.

Eldon was extremely “well liked” by all that knew him and will be missed particularly by his many co-workers at CSO. A memorial has been established with the Kansas Geological Foundation.



THREE KGS MEMBERS GIVE TALKS AT LOCAL CHURCH

Three of our local geologists are featured speakers at St. James Episcopal Church, speaking on the topic of “God and the Environment”, a program running April 15—May 27.



Tom Hansen
M.S.

Tom attended and majored in geology at KSU, he received a Bachelor of Science in 1967 and a Master of Science in 1969. He worked as a geologist and exploration manager for several oil companies. Since 1989, Tom has been a consulting hydrogeologist. Tom his wife Pat, and their two daughters moved to Wichita in 1980. Tom is certified as Professional Geologist with the American Association of Petroleum Geologists and the American Institute of Professional Geologists.



Kent Matson
B.S.

Kent is a life long resident of Kansas and grew up in the Valley Center area. He graduated from WSU in 1991 with a BS in Geology with continued graduate studies in geology. Kent has been employed as a geologist in the environmental business for the last 14 years and currently he is a Senior Geologist and Environmental Department Manager at Geotechnical Service, Inc. (GSI). His primary focus of work over the years has been in the area of soil and groundwater contamination assessments and remediation.



Monte R. Markley
B.S.

Monte R. Markley obtained a BS in Geology from Lamar University in Beaumont, Texas in 1989. He worked 15 years as an engineering geologist and hydrogeologist conducting geologic hazard evaluations and hazardous waste and water supply groundwater investigations in the central US from the Gulf Coast to Canada. In 2005 he started working for FAB Environmental of Wichita, Kansas and is a partner in that firm. He has been married to Anna for 20 years and has three teenagers.

ADVERTISER'S DIRECTORY

	<i>page</i>
A2D Technologies	2
Abercrombie RTD, Inc	21
Allied Cementing Company, Inc	21
Duke Drilling	21
GeoCare Services AAPG	8
Greensburg Oilfield Service	21
Kansas Geological Foundation	26
Lockhart Geophysical	21
LogSleuth	25
MBC	4
Murfin Drilling Company, Inc	21
Olsson Associates	10
PARAGON Geophysical Services, Inc	10
Petrobase	21
Professional Directory	22
Sunrise Oilfield Supply	4
Trilobite Testing	6
Walters Digital Library	13
Weatherford	27

ADVERTISER'S RATES: 2006

Full Page	B&W	Color
6 issues	\$2,000	\$2,500
3 issues	\$1,080	\$1,325
1 issue	\$480	\$525
1/2 Page		
6 issues	\$1,000	\$1,500
3 issues	\$540	\$825
1 issue	\$225	\$350
1/4 Page		
6 issues	\$600	\$900
3 issues	\$325	\$525
1 issue	\$150	\$250
1/8 Page		
6 issues	\$300	\$500
3 issues	\$175	\$325
1 issue	\$75	\$185
Professional Ad (Business Card)		
6 issues	\$90	\$180

Note: Full page, 1/2 page and 1/4 page ads receive an ad space in the KGS Directory at no additional charge.

Established 1926



WESTERN KANSAS / EASTERN COLORADO
SOUTHERN NEBRASKA / OKLAHOMA PANHANDLE



**9
Drilling
Rigs**

**10 Well
Servicing Rigs
& Roustabout
Services**

For contract information:

For contract information:

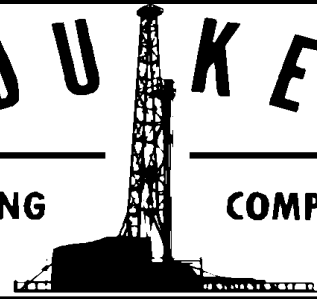
Mindi Whyte
Drilling Department
316-858-8671 (Direct Line)
250 N. Water, Suite 300
Wichita, KS 67202

Alan Hayes
Well Service Supervisor
785-421-2102
East Highway 24
Hill City, KS 67642

DUKE

DRILLING

COMPANY



ROTARY DRILLING CONTRACTOR

620 Hubbard PO Box 823
Great Bend, KS 67530
Phone 620-793-8366

100 S. Main, Ste. 410,
Wichita, KS 67202
Phone 316-267-1331
Fax 316-267-5180



GREENSBURG OILFIELD SERVICES

P.O. Box 816
Greensburg, KS 67054

- * Hot oil treating
- * Paraffin removal
- * High pressure pumps
- * Oilfield tank cleaning
- * Power washing
- * Fresh and salt water hauling
- * Bulldozers
- * Motor grader
- * Vacuum Truck
- * Steamer
- * Fully Insured
- * Work Guaranteed

TOLL FREE 800-794-7806
Greensburg, KS (620) -723-2112
Pratt, KS (620) -672-6044
Great Bend, KS (620) -793-9790

Great Bend
(620) 793-5861

Ness City
(785) 798-3843

Medicine Lodge
(620) 886-5926

**ALLIED
CEMENTING CO., INC.**

Acidizing Available at Medicine Lodge District

Russell
(785) 483-2627

Oakley
(785) 672-3452

Lockhart Geophysical Company

Call (303) 592-5220 FAX (303) 592-5225
Or E-mail lockden@xpert.net

2D & 3D Seismic Acquisition
Vibroseis Specialists



JAPEX GDAPS-4 Distributed
System

We'll give you seismic excellence

PETROBASE

The Digital Database for Western Kansas

High Quality Data Your Software Can Use
Includes All Central and Western Counties
All Wells — Dating from the 1800's

The Most Complete and Extensively Edited Data Available
Headers • Tops • Dsts • Perfs and Other Unique Features
Geologically Selected Formation Tops-Consistent Stratigraphic Nomenclature
Accurate Latitudes-Longitudes Tied to Digital Land Grids

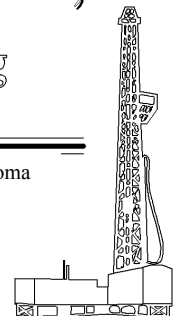
Robert D. Dougherty, Geologist Phone (620)793-9055
P.O. Box 1065 Great Bend, Kansas 67530
or call WhiteStar Corporation in Denver - (303) 781-5182

ABERCROMBIE RTD, INC.

**Rotary Drilling
Contractor**

Operating 4 Rigs in Western Kansas & NW Oklahoma

150 N. MAIN SUITE 801
WICHITA, KANSAS 67202-1383
(316) 262-1841



PROFESSIONAL DIRECTORY

Kirk Rundle
Consulting Geophysicist

3D Seismic Design, Acquisition to Processing QC.,
Interpretation and Analysis, Subsurface Integration
7340 W. 21st. N., Ste. 100
Wichita, Kansas 67205

Office: 316-721-1421 Fax: 316-721-1843
Home: 316-721-8962 Email:krundle@swbell.net

ROGER L. MARTIN

*Independent/Consultant
Petroleum Geologist*

200 East First Street, Ste. 405
Wichita, Kansas 67202

Office 316-267-0032/Cell: 316-250-6970

Fax: (316) 264-8686

Email: rogermartingeo@sbcglobal.net

DON V. RIDER

Consulting Petroleum Geologist
**Well Site Supervision
Geological Studies
Completions**

8910 W. Central Park Ct.
Wichita, KS 67205

Office PH: 316-729-4445 Cell PH: 316-706-7199

ALFRED JAMES III

Petroleum Geologist
Kansas - Colorado - Alaska

SIPES #1111

Wichita, Kansas 67202

Off: (316) 267-7592

Tel.: (972) 712-9036
Fax: (972) 712-0258
Cell: (214) 223-1784

LANG J. FUQUA
Certified Petroleum Geologist

4201 Tanglewood Ln.
Frisco, Texas 75035

M. Bradford Rine

Honorary Life Member—Kansas Geological Society

*Licensed Geologist—KS. #204
Registered Professional Geologist—Wyo. # 189
Certified Geologist—A.A.P.G. # 2647
S.I.P.E.S. # 1584 S.P.E. #109833-4*

PROSPECT EVALUATION • PROSPECT GENERATION
WELLSITE SUPERVISION • EXPERT TESTIMONY • OPERATIONS
PROPERTY EVALUATION • RESERVOIR STUDIES

Suite 415
100 S. Main
Wichita, KS 67202

DRLG./COMP. CONSULTATION

Office: (316) 262-5418
Fax: (316) 264-1328
Cell: (316) 772-6829

WESLEY D. HANSEN

Consulting Geologist

Well site Supervision
Geologic Studies
212 N. Market, Ste 257
Wichita, Kansas 67202
Off: (316) 263-7313
Mobile: (316) 772-6188



Paul Gunzelman
President

phone 316.3.1.6026 fax 316.634.2716

Email p.gun@sbcglobal.net



KEVIN L. KESSLER

INDEPENDENT/CONSULTING PETROLEUM GEOLOGIST

WELLSITE SUPERVISION • GEOLOGIC RESEARCH
OIL & GAS PROSPECTS
KANSAS & EASTERN COLORADO

MAILING ADDRESS	PHONE
1199 N. PONDEROSA RD.	RES.: (316) 522-7338
BELLE PLAINE, KS 67013	MOBILE: (316) 706-6636
EMAIL: KKESSLER1199@AOL.COM	

ROBERT J. GUTRU

Geologist

300 Farmers & Bankers Bldg.
200 East First Street
Wichita, Kansas 67202
Off: (316) 265-3402

PROFESSIONAL DIRECTORY

MELLAND ENGINEERING

Petroleum Engineering & Geological Consulting

James E. Melland, P.E.

Owner

Office: (620) 241-4621 Fax: (620) 241-2621

Cell Phone: (661) 319-5950

Email: jemelland@sbcglobal.net

Jamesm@mellandengineering.com

P.O. Box 841, McPherson, KS 67460

KGJ ENTERPRISES

Contract Oil & Gas Accounting &
Office Management

Kathryn G. James, MBA
4278 SW 100th ST.
Augusta, KS 67010

(316) 775-0954
(316) 250-5989
kgjames@onemain.com

Help Wanted! Integration Project

If you have any time you could give to
the
**Library, we have
projects that could move a little faster
with some
Expert Professional
Geologists**

**Just a few hours a week
would make such a
difference.**

*To volunteer, please contact Ted Jochems
or Rebecca at the Library
265-8676*



*Promote
Yourself!*

*Buy an AD space
in our Bulletin*

*Promote
Yourself!*

THE ON-LINE BULLETIN IS NOW IN PDF FORMAT

Check out the complete KGS
Bulletin on our web site
www.kgslibrary.com

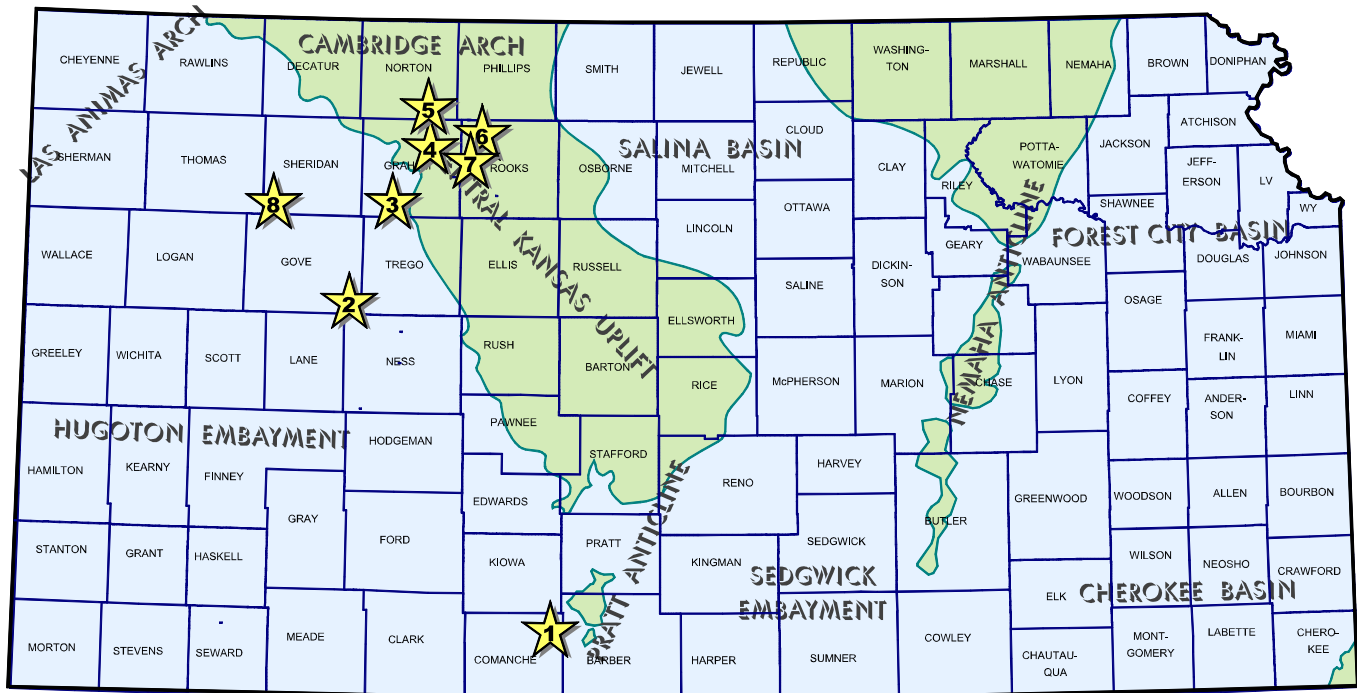
A simple way to help your Society save money
would be to let us know if you like viewing the
Bulletin on line. This would allow us to reduce
our mailing & printing costs of sending the Bulletin
to every member.

We are glad to keep mailing it to you but if you
are satisfied with reading on-line, please just let
us know.

316-265-8676

Exploration Highlights

By John H. Morrison, III
Independent Oil & Gas Service



1) New Mississippian gas production has been established nearly two miles south of the Dunlap Creek Field in Comanche County by Wichita-based Woolsey Operating Co., LLC. The #1 York D OWWO, located in the NE/4 of section 5- T32s- R16W, is flowing an undisclosed amount of natural gas effective December 21, 2006. Operator successfully re-entered the old well which was originally drilled and plugged in 1958 at a total depth of 5038 ft. A Drill Stem Test had tested a maximum gauge of 734 Mcf gas daily from a depth between 4905 to 4980 ft. The well opens the new Baker Canyon Field about seven and one-half miles southeast of Wilmore, Kansas.

2) A new oil discovery has been made in the NE/4 of section 4- T15s- R26W, Gove County, by Central Operating, Inc. of Denver, Colorado. The firm's Raymond / Parsons #1 has been completed for 35 barrels of oil per day, no water. Operator found productive zone in the Mississippian formation from 4239 to 4242 ft. First production commenced in February this year. The new field is named Noton Southeast as it lies about one and one-quarter miles to the southeast of the Noton Field. The new field is located about ten miles northwest of Utica, Kansas.

3) Coral Production Corp., of Denver, Colorado, has discovered the new Gano South oil field in Graham County about six and one-half miles east of the town of Saint Peter, Kansas. The discovery well, #13-1 V. Gano, located in the NW/4 of section 13- T10s- R24W, is producing an unknown amount of crude oil from the Lansing-Kansas City formation. The well has been

successfully offset to the south with two locations drilled by Murfin Drilling Company of Wichita. The Goltl Trust Unit #1-14, SE/4 of section 14- T10s- R24W, is on pump, and the Page #2-13, SW/4 of section 13- T10s- R24W, awaits completion. They also found LKC reserves.

4) The new Quarry Hill oil field has been discovered by Vincent Oil Corp., of Wichita. Discovery was made at the Webb #1-30, located in the NE/4 of section 30- T7s- R22W, about three and one-half miles northeast of Hill City, Kansas. The well is on pump at an unknown rate. Rotary total depth was obtained by WW Drilling tools at 3900 ft. The discovery lies over three-quarters mile southeast of the Fabricius Field in Graham County

5) In the SE/4 of section 33- T5s- R22W, Norton County, new Lansing-Kansas City oil production has commenced at the Minks 33AD #1, operated by Ritchie Exploration, Inc. of Wichita. The 3920 ft. deep well is producing an undisclosed amount of oil at site located nearly three-quarters mile southeast of the Kemper Northeast Field, or approximately six miles southwest of Densmore, Kansas. Plug back total depth is 3893 ft. Jeff Christian served as well site geologist.

6) Lansing-Kansas City oil is being produced at the rate of 30 barrels daily plus 120 barrels of water at the Teresa #1, located in the SW/4 of section 31- T7s- R20W in Rooks County. The wildcat well is a new oil discovery for by Black Diamond Oil, Inc., of Hays, Kansas. Discovery site is spotted nearly three-

Earl Knighton, Sr. Endowed Scholarship

The Knighton family has provided funds for an endowed scholarship in the name of Earl Knighton, Sr.

Earl Knighton grew up in Missouri and graduated from Joplin High School. After taking several geology courses at the University of Missouri, he switched his major from business to geology. Unfortunately Earl was not able to complete his senior year because of the illness of his father.

After 8 months back in Joplin he joined an acquaintance in Bartlesville. While there he interviewed with Indian Territory Illuminating Oil Company, later to become Cities Service Oil Co. After the interview, he accepted employment with ITIO in their accounting department. After three months in accounting he accepted a position in their geological department.

While employed in Bartlesville, he met and married Mary Katherine Stockard. Earl and Katie had three sons: Earl Jr. (Mac), Wichita, Phil, Wichita, and Robert, Kansas City.

In 1940 Earl was called to active duty with the Air Force. During his 5 ½ years in the service Earl was stationed in a wide variety of places including Washington D. C., Tulsa, North Carolina, Belleville, Illinois and St. Louis.

After being discharged, Earl returned to work for Cities Service. He then worked in Wichita for two years in the Land Department. Rather than return to Bartlesville, he made the decision to “go on his own”. He worked with a wide variety of operators, including Ernie Moncrief and Pierce Musgrove

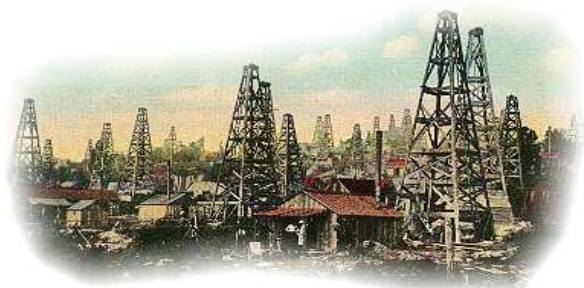
In the 1970’s he commenced operations with Don Hellar and this successful relationship continued for many years. Earl passed away in 2001.

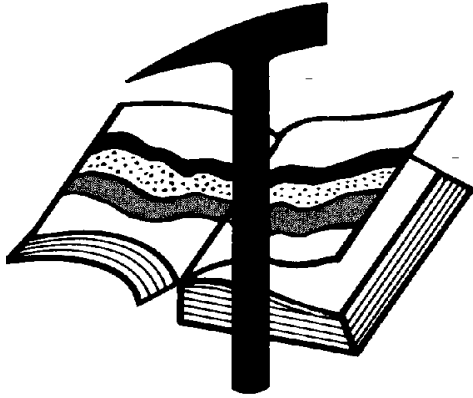
The Foundation certainly wants to express its gratitude for this donation, which will provide funds for some student in need.

quarter mile south of established production in the Nicodemus East Field. The Teresa well is producing 30 degree gravity oil from limited entry perforations in the Lansing- Kansas City limestone at 3348 ft. and 3358 ft. First production was established on January 26, 2007. The well was drilled to a total depth of 3570 ft. by WW Drilling tools. The new unnamed field lies slightly over one-half mile northeast of the town of Nicodemus.

7) Lansing-Kansas City oil deposits have been discovered by Palomino Petroleum, Inc., of Newton, Kansas, at the firm's LaBarge #1 in the NW/4 of section 20- T7s- R20W, Rooks County. Southwind Drilling rig drilled the well to a total depth of 3645 ft. Operator perforated the LKC from 3395 to 3400 ft. and 3406 to 3410 ft. and has completed the well for 25 barrels of oil and 20 barrels of water per day effective January 29, 2007. The wildcat well establishes a new unnamed field about 16 miles west of Stockton, Kansas.

8) Russell Oil, Inc., of Plainville, Illinois, has completed their #1-19 Zelda Ferguson 'B' for 127 barrels of oil per day, no water. The new Sheridan County pool discovery is located in the SW/4 of section 19- T10s- R30W, about four and one-half miles northwest of the town of Grinnell in northwest Kansas. Commingled 43 degree gravity crude is being produced from the Lansing-Kansas City limestone at 4241 to 4247 ft., as well as from the Marmaton (Pawnee) limestone at 4370 to 4374 ft. Shields Drilling rig was used to drill the well to a rotary total depth of 4650 ft. The new field started producing in November last year and has tentatively been named the Zelda Field. Closest production nearby is found over one mile to the west in the Triangle Field in Thomas County where similar reserves have been produced since 1983.





Kansas Geological Foundation

Web Site: www.kgfoundation.org

**212 North Market
Wichita, Kansas 67202**

A not-for-profit educational and scientific corporation

GOALS:

- promote geology and earth science
- preserve geological records
- establish memorials and endowments
- support field trips and seminars
- financial aid and grants to students

PLEASE HELP SUPPORT THE FOUNDATION

Kansas Geological Foundation Services

The Kansas Geological Foundation provides the following services as a part of the organization's commitment to educate the public regarding earth science.

Speaker's Bureau

A list of speakers available to talk about various aspects of geology may be obtained by contacting Janice Bright at the KGS Library, 265-8676. This service is free to the public.

DVD/Videotape Library

The KGF maintains a DVD & videotape library focused primarily on the various fields of earth science. These tapes may be checked out without charge by the public. To obtain a list of tapes, please contact the KGS Library, 212 N. Market, Ste. 100, Wichita, KS 67202, or call Janice Bright at 265-8676.

The Kansas Geological Foundation was founded in March, 1989 as a not-for-profit corporation under the guidelines of section 501(c)(3) of the tax code to provide individuals and corporations the opportunity to further the science of geology. It is dedicated to providing charitable, scientific, literary and educational opportunities in the field of geology for the professional geologist as well as the general public.

KGF can receive in-kind donations through which the donor may receive a tax deduction. Of equal importance, the KGF provides the financial resources to sort, process and file this data at the KGS library. If you have a donation to make, please contact the KGF at 265-8676.

Your tax-deductible membership donation helps to defray the cost of processing donations and to support public education programs about the science of geology. Annual membership begins at \$50.00 per year. Donations of \$100.00 or more are encouraged through the following clubs:

Century Club	\$ 100 to \$ 499
\$500 Club	\$ 500 to \$ 999
Millennium Club	\$1000 to \$5000
President's Club	\$5000 and over

CD's & DVD's

New DVD's added to the Kansas Geological Foundation Library

GeoFamilies

1 Hour, Distributed by the RMAG

Stories from seven families of geologists to characterize the excitement and challenge that draws people into the field.

The Day the Earth Nearly Died

Discovery Channel

Two hundred fifty million years ago, before the time of the dinosaurs, the Earth flourished. Every niche – from the highest mountain to the deepest ocean- was buzzing with life. But then the Earth experienced the single most destructive even in its history.

Abstracts of AAPG Annual Meeting

Long Beach, 2007 – AAPG

Understanding Earth Systems

2006 AAPG Bulletin on CD-Rom

Petroleum Systems and Assessment of Undiscovered Oil and Gas in the Raton Basin – Sierra Grande Uplift Province, Colorado and New Mexico

USGS

The Oil and Gas Resource Potential of the Artic National Wildlife Refuge 1002 Area, Alaska

USGS

Map Showing Geology, Oil and Gas fields, and Geologic Provinces of the Gulf of Mexico Region

USGS

Petroleum Resource Potential GIS pf Northern Afghanistan

USGS

Petroleum Systems and Geologic Assessment of Undiscovered Oil and Gas, Cotton Valley Group and Travis Peak,-Hosston Formations, East Texas Basin and Louisiana-Mississippi Salt Basins Provinces of the Northern Gulf Coast Region

USGS

Map Showing Geology, Oil and Gas Fields, and Geologic Provinces of the Caribbean Region

USGS

Alaska, Oil and Gas Opportunities – March 2007

Alaska Department of Natural Resources – Division of Oil and Gas

Petroleum Potential of United Kingdom

Department of Trade and Industry

HDS 2000 – Visual Petrophysical Tool

ETECH International Ltd.

All Datapool Programs – Program Maps, Legends and Survey Plats

ECHO Geophysical Corporation

SEISearch

SEI – Seismic Exchange

Seismic and Well Data – Seismic Processing Services

GGs Spectrum

World Data Directory – 2006 Edition

Fugro Robertson, Inc.

If you want to check any of these out contact
Janice Bright at the
Kansas Geological Society/Library
316-265-8676.

Your only cost is returning them to the Library

www.KGFoundation.org

KGF SPRING MIXER

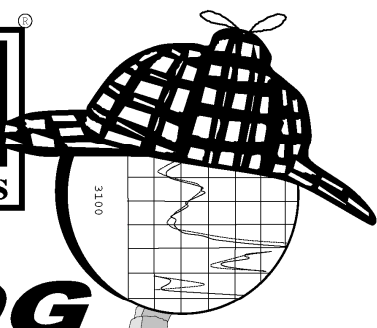
Come & bring a friend!!

**Kansas Geological Foundation's
Annual Spring Mixer**

Thursday, May 24th

4:30 - 8:00 PM

Petroleum Club



LOG
Sleuth
2000
 AND **RASTER IMAGE**
WELL LOGS

OVER
5 MILLION
LOGS
AVAILABLE

1-800-310-6451
SALES@MJLOGS.COM
CALGARY • DENVER

U.S.A.
LOGS FOR:

- ALABAMA
- ALASKA
- ARKANSAS
- ARIZONA
- CALIFORNIA
- COLORADO
- FLORIDA
- IDAHO
- ILLINOIS
- INDIANA
- KANSAS
- LOUISIANA
- MICHIGAN
- MISSOURI
- MISSISSIPPI
- MONTANA
- NEBRASKA
- NEVADA
- NEW MEXICO
- NORTH DAKOTA
- OKLAHOMA
- OREGON
- SOUTH DAKOTA
- TEXAS
- UTAH
- WASHINGTON
- WEST VIRGINIA
- WYOMING

CANADIAN
LOGS FOR:

- ALBERTA
- BRITISH COLUMBIA
- SASKATCHEWAN
- MANITOBA
- FEDERAL AREAS

KGF Memorials

KGF Member	Date Deceased	Memorial Established	KGF Member	Date Deceased	Memorial Established
Dan Bowles	09/89	1990	Warren E. Tomlinson	01/00	2000
John Brewer	10/89	1990	James A. Morris	01/00	2000
George Bruce	08/89	1990	Eric H. Jager	03/00	2000
Robert Gebhart	01/90	1990	Kenneth W. Johnson	03/00	2000
Ray Anderson, Jr.	11/90	1990	Dean C. Schaake	03/00	2000
Harold McNeil	03/91	1991	Fred S. Lillibridge	05/00	2000
Millard W. Smith	08/91	1991	Jerry A. Langrehr	07/00	2000
Clinton Engstrand	09/91	1991	Clark A. Roach	07/00	2000
M.F. "Ted" Bear	10/91	1991	Floyd W. "Bud" Mallonee	10/00	2000
James & Kathryn Gould	11/91	1991	Ralph W. Ruuwe	09/00	2000
E. Gail Carpenter	06/91	1993	Robert L. Slamal	02/01	2001
Benton Brooks	09/92	1992	Jerold E. Jespersen	06/01	2001
Robert C. Armstrong	01/93	1993	William A. Sladek	06/01	2001
Nancy Lorenz	02/93	1993	Harlan B. Dixon	06/01	2001
Norman R. Stewart	07/93	1993	Edward B. Donnelly	08/01	2001
Robert W. Watchous	12/93	1993	Richard P. Nixon	02/02	2002
J. George Klein	07/94	1994	Robert W. Frensley	12/01	2002
Harold C.J. Terhune	01/95	1995	Gerald W. Zorger	01/02	2002
Carl Todd	01/95	1995	Don L. Calvin	03/02	2002
Don R. Pate	03/95	1995	Claud Sheats	02/02	2002
R. James Gear	05/95	1995	Merle Britting		2002
Vernon Hess	06/95	1995	Harold Trapp	11/02	2002
E. K. Edmiston	06/95	1995	Donald M. Brown	11/02	2003
Jack Rine	07/95	1995	Elwyn Nagel	03/03	2003
Lee Cornell	08/95	1995	Robert Noll	09/03	2003
John Graves	10/95	1995	Benny Singleton	09/03	2003
Wilson Rains	10/95	1995	Jay Dirks		2003
Heber Beardmore, Jr.	09/96	1996	J. Mark Richardson	02/04	2004
Elmer "Lucky" Opfer	12/96	1996	John "Jack" Barwick	02/01	2004
Raymond M. Goodin	01/97	1997	Richard Roby	03/04	2004
Donald F. Moore	10/92	1997	Ruth Bell Steinberg		2004
Gerald J. Kathol	03/97	1997	Gordon Keen	03/04	2004
James D. Davies	08/88	1997	Lloyd Tarrant	05/04	2004
R. Kenneth Smith	04/97	1997	Robert J. "Rob" Dietterich	08/96	2004
Robert L. Dilts	05/97	1997	Mervyn Mace	12/04	2004
Delmer L. Powers	06/72	1997	Donald Hoy Smith	04/05	2005
Gene Falkowski	11/97	1997	Richard M. Foley	06/05	2005
Arthur (Bill) Jacques	01/98	1998	Wayne Brinegar	06/05	2005
Bus Woods	01/98	1998	Jack Heathman	05/06	2006
Frank M. Brooks	03/98	1998	Charles Kaiser	09/06	2006
Robert F. Walters	04/98	1998	Rod Sweetman	08/06	2006
Stephen Powell	04/98	1998	Karl Becker	10/06	2006
Deane Jirrels	05/98	1998	Frank Hamlin	10/06	2006
William G. Iversen	07/98	1998	Marvin Douglas	12/06	2006
Ann E. Watchous	08/98	1998	Robert W. Hammond	04/07	2007
W.R. "Bill" Murfin	09/98	1998	Eldon Frazey	04/07	2007
Donald L. Hellar	11/98	1998			
Joseph E. Rakaskas	01/99	1999			
Charles W. Steincamp	02/99	1999			
Robert and Betty Glover	10/96	1998			
Howard E. Schwerdtfeger	11/98	1999			
W. W. "Brick" Wakefield	03/99	1999			
V. Richard Hoover	01/00	2000			



All Around You

Weatherford has always been driven by your needs.

Now, with the addition of Precision Energy Services we're continuing to build a world of skills, services and technologies that revolve – and evolve – around you.

The result?

An expanded global network of 25,000 people, 730 service bases and 87 manufacturing facilities in 100 countries.

This increased local knowledge and service is there to support you anywhere, anytime. From midday in the Middle East to midnight in the middle of nowhere.

And with greatly strengthened capabilities in the critical evaluation skills of directional drilling and wireline logging, we can do even more to improve the profitability and productivity of your wells.

To see how our sphere of services can work for you, visit www.weatherford.com or contact either your Weatherford or former Precision Energy Services representative.

Drilling | Evaluation | Completion | Production | Intervention

Kansas Geological Society & Library
212 North Market, Suite 100
Wichita, Kansas 67202

PRSRT STD US POSTAGE PAID WICHITA KS PERMIT NO 923
--

KGS BULLETIN
May—June 2007

May 2007

SUN	MON	TUE	WED	THU	FRI	SAT
		1	2	3	4	5
6	7 KGS Board	8 Tech Talk	9	10	11	12
13	14 Tech Talk	15	16	17	18 Desk & Derrick Clay Shoot	19
20	21 Tech Talk	22	23	24 KGF's Spring Mixer	25	26
27	28 Library Closed Memorial Day	29	30	31		

June 2007

SUN	MON	TUE	WED	THU	FRI	SAT
					1	2
3	4	5	6	7	8	9
10	11 KGS Golf	12 KGS Board	13	14	15	16
17	18	19	20	21	22	23
24	25	26	27	28	29	30