



Established 1925

KANSAS GEOLOGICAL SOCIETY

BULLETIN

Volume 82 Number 6

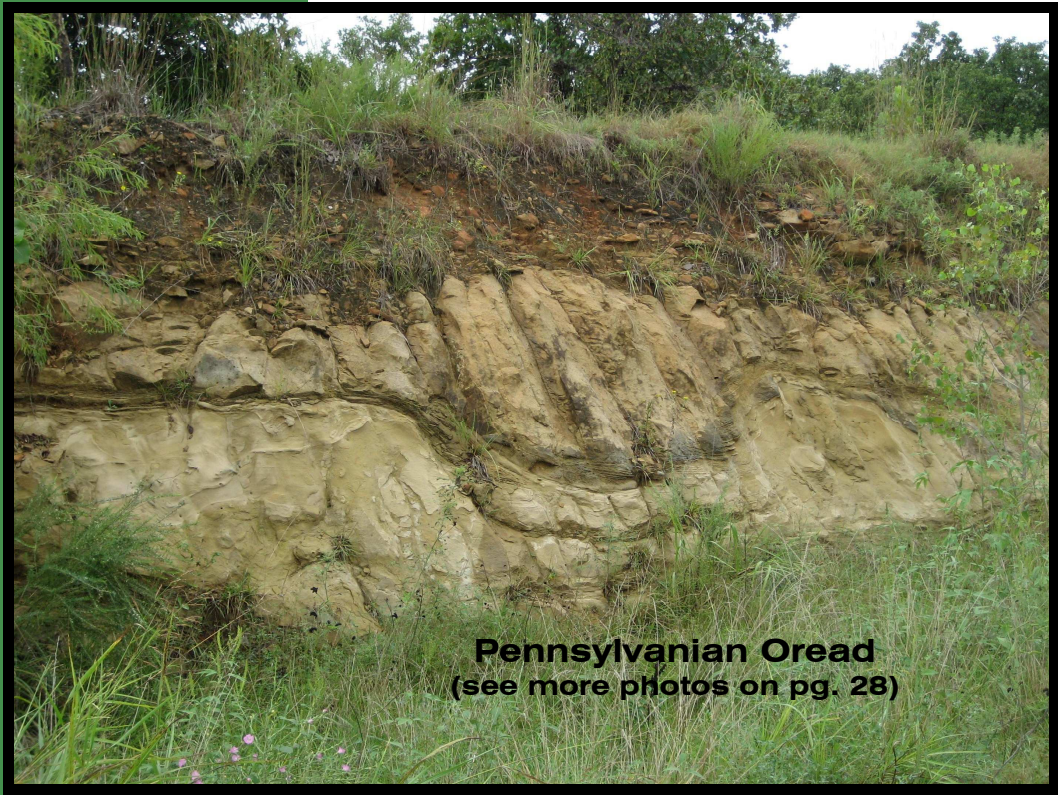
November—December 2007

IN THIS ISSUE

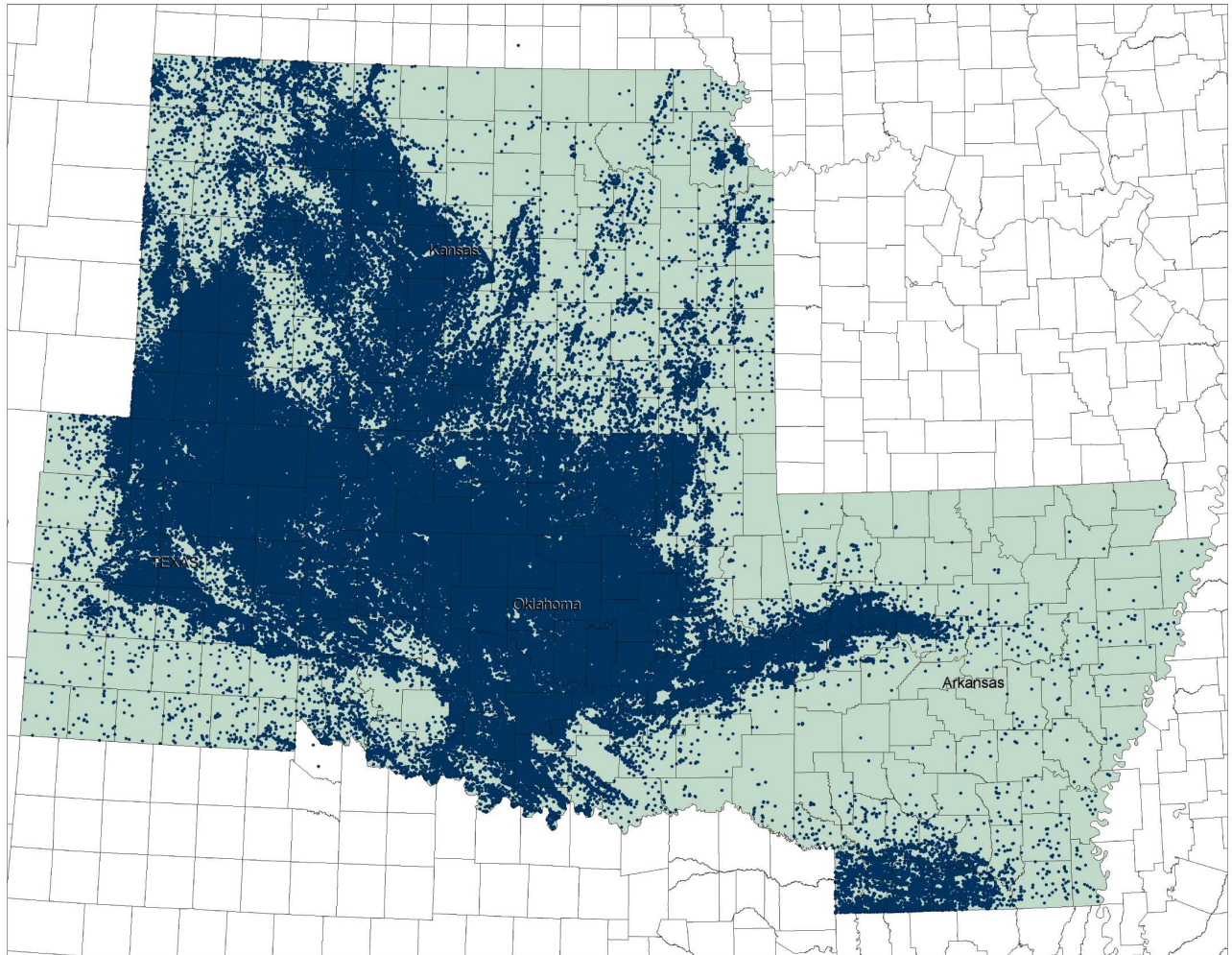
Memorial:
Bob Douglass

Member Profiles:
Al Stude
Albert Abercrombie

2008 Elections
Meet the Candidates
Page 14



Pennsylvanian Oread
(see more photos on pg. 28)



Mid-Continent:
ARE YOU READY?

Exploration and development activity is on the rise. As you seek to capitalize on the industry's momentum, don't let well log data get in the way. No company has removed more barriers between people and their well log data than A2D Technologies. With coverage of all the crucial wells in the Mid-Continent, North America and hydrocarbon provinces worldwide, A2D will get you ready for the opportunities to come.



Your Well Log Data Marketplace

www.a2d.com

Table of Contents

Geo-Families:

A Collection of Kansas Families “in the business” 17

Features:

Member Profiles:

Al Stude10

Albert Abercrombie12

Memorial:

Robert “Bob” Douglass.....16

Walters Digital Library:

Announcement & Letter from AnyImage.....18

2008 KGS Candidates24

Departments & Columns:

President’s Letter 7

From the Manager..... 9

Professional Directory 23

Advertiser’s Directory 21

KGS Tech Talks 4

Kansas Geological Foundation27

Exploration Highlights25

ON THE COVER:

Photo of Pennsylvanian Oread outcrop—from AAPG Mid-Continent field trip led by Dr. Wan Yang & Dr. Sal Mazzullo. Several convention attendees went on this field trip to SE Kansas.

CALL FOR PAPERS

The Kansas Geological Society Bulletin, which is published bimonthly both in hard-copy and electronic format, seeks short papers dealing with any aspect of Kansas geology, including petroleum geology, studies of producing oil or gas fields, and outcrop or conceptual studies. Maximum printed length of papers is 5 pages as they appear in the Bulletin, including text, references, figures and/or tables, and figure/table captions. Inquiries regarding manuscripts should be sent to Technical Editor Dr. Sal Mazzullo at salvatore.mazzullo@wichita.edu, whose mailing address is Department of Geology, Wichita State University, Wichita, Kansas 67260. Specific guidelines for manuscript submission appear in each issue of the Bulletin, which can also be accessed on-line at the Kansas Geological Society web site at <http://www.kgslibrary.com>

SOCIETY Technical Meetings

Fall 2007

Oct. 15 - Randy Keller, Oklahoma University, *“Gravity & Magnetic Studies of the Southern Rocky Mountain Crust: Basins to Basements”*

Oct. 22 - Dave Dayvault, *“Issues Facing the Oil Industry”*

Oct. 29—Cina Poyer, *“Underground Storage of Hydrocarbons in Salt Caverns”*

Nov. 5—Rick Andrews, Oklahoma Geological Survey, *“Production & Outcrop / Reservoir Characteristics of the Woodford Shale in South-Central & Southeast Oklahoma”*

Nov. 12 - Jim Rogers, Denver, *“Garfield Conglomerate Pool, Pawnee County, Kansas: New Reservoir Model From An Old Oil Field”*

Nov. 19—TBA

Dec. 3 - Dr. Wan Yang, WSU, *“Application of Sequence Stratigraphy—Lessons Learned from Fluvial-Lacustrine Rocks of Northwestern China”*

Dec. 10 - Dan Hitzman, *Hydrocarbon Microseepage Surveys in Kansas: Reconnaissance to Prospect Evaluation Strategies”*

Dec. 17 — Randy Schott, Ft. Hays, State, TBA

- ◆ **December 12—12:30 PM—KGS Annual Business Meeting: held at the Wichita Bar Association—225 N. Market**

Attention!

Location for Technical Meetings

*All KGS technical presentations are held at 12:30 p.m. at the **Wichita Bar Association**, located at **225 N. Market**, ground floor conference room, unless otherwise noted.*

Note: For those geologists who need 30 points to renew their licenses, there will be a sign-in sheet at each presentation and also a certificate of attendance.



BOARD OF DIRECTORS

PRESIDENT Philip M. Knighton	PRESIDENT-ELECT Ernie Morrison
SECRETARY Rick Saenger	TREASURER Doug Davis
DIRECTORS Chuck Brewer Beth Isern Robert Stolzle	ADVISORS Debra FitzGerald Robert O'Dell

COMMITTEE CHAIRMEN

<u>Advertising</u>	Kent Scribner
<u>Advisory</u>	Debra FitzGerald Robert O'Dell
<u>Annual Banquet</u>	Doug Davis
<u>Bulletin</u>	<i>Editor</i> Wes Hansen <i>Technical Editor</i> Sal Mazzullo
<u>Continuing Education</u>	Robert Cowdery
<u>Distinguished Awards</u>	Chuck Brewer
<u>Directory</u>	Larry Richardson
<u>Environmental</u>	Kent Matson
<u>Field Trip</u>	Larry Skelton
<u>Fishing Tournament</u>	Randy Teter
<u>Future Plans</u>	
<u>Golf</u>	Kevin Davis John Hastings
<u>Historian</u>	Larry Skelton
<u>Investment</u>	Steve Stribling
<u>Library</u>	Roger Martin Ted Jochems
<u>Membership</u>	Larry Friend
<u>Nomenclature</u>	John H. Morrison, III
<u>Picnic</u>	Kimberly Dimmick-Wells
<u>Public Relations</u>	Robert Cowdery
<u>Shooting Tournament</u>	Larry Richardson
<u>Technical Program</u>	Robert Cowdery
<u>Ticket Sales</u>	Bill Shepherd

A.A.P.G. DELEGATES

Ernie Morrison	Robert Cowdery	Alan DeGood
2008	2009	2009

BULLETIN STAFF

EDITORS

Sal Mazzullo: Technical Editor
salvatore.mazzullo@wichita.edu (316) 978-7211

ADVERTISING

Kent Scribner
Stelbar Oil Corp. (316) 264-8378

PROFILES/MEMORIALS

Robert D. Cowdery
Consultant (316) 267-9030

EXPLORATION HIGHLIGHTS

John H. Morrison, III
Independent O&G (316) 263-8281

STATE SURVEY

Rex Buchanan
KS Geological Survey (785) 864-3965

SOCIETY NEWS

KGS Library (316) 265-8676

K.G.S. LIBRARY

PHONE 316-265-8676 FAX 316-265-1013
email: frontdesk@kgslibrary.com or
Web: www.kgslibrary.com

LIBRARY MANAGER

Rebecca Radford 265-8676
manager@kgslibrary.com

The KGS *Bulletin* is published bi-monthly by the Kansas Geological Society, with offices at 212 North Market, Wichita, Kansas 67202 Copyright 2006, The Kansas Geological Society. The purpose of the *Bulletin* is to keep members informed of the activities of the Society and to encourage the exchange and dissemination of technical information related to the Geological profession. Subscription to the *Bulletin* is by membership in the Kansas Geological Society. Limited permission is hereby given by the KGS to photocopy any material appearing in the KGS *BULLETIN* for the non-commercial purpose of scientific or educational advancement. The KGS, a scientific society, neither adopts nor supports positions of advocacy, we provide this and other forums for the presentation of diverse opinions and positions. Opinions presented in these publications do not reflect official positions of the Society.

TRILOBITE TESTING INC

Eleven Trucks Serving
Kansas - Colorado - Texas
Nebraska - Illinois

Slickline services using the same
Alpine Electronic Pressure
Guages as used on DST's

Back pressure testing (G1 & G2)

DST's

1-800-728-5369

FAX: 1-785-625-5620
trilobite @eaglecom.net

SHOPS LOCATED IN:

Hays, KS

Scott City, KS

Pratt, KS

Hugoton, KS

Clay City, IL



CAN YOU NAME THE CRITTER?

Sponsored by Trilobite Testing, Inc.

Is your paleo up to date?

If you know the name of the trilobite,
submit your guess to Wes Hansen at
316-263-7313 or via e-mail at
manager@kgslibrary.com

Remember that Trilobite Testing is
sponsoring your efforts, so be sure to thank
Paul Simpson the next time that you see him.

***Bulletin committee members and PhD's in
Paleontology are prohibited from entering.***

Photos From The Clay Shoot



The Group



Larry Richardson at the controls,
Pat Kane (shooting), Diana Edmiston sitting



Sarah (Pat Kane's daughter)
helping Rick Saenger pick prize tickets

President's Letter

Greetings to all our fellow members. This is my last President's letter. I have been honored and enjoyed being your President. I wish to thank all the committee chairs, members and staff for their support making this job a lot easier. No one has refused to help when asked. That's one of the special things about our members and Society.

Bob Cowdery has once again filled our schedule this Fall with talks that are interesting and germane to our branch of the profession. Many thanks Bob. The library is selling many copies of logs and making headway on the backlog of boxes of new logs pouring in from the KCC...the KCC is now moving a lot of logs that were backed up in their process. The new logs are being scanned and put into our paper files. When the new software is up and running, we hope to get these integrated into our Walters Digital Library as soon as possible.

This year has seen a lot of great events for the Society, including the Annual Banquet, Golf Tournament, Fishing Tournament, Annual Picnic, the AAPG Regional Convention, and most recently, the Shooting Tournament. Sounds like all had a lot of fun, and even I could have won a prize shooting if they had barn sized targets moving very slow.

Regarding our new software for the Walters Digital Library, Rebecca advises me that it is installed in our Library and running there, but because of 'security' issues that David Tittle is working on, it is not in the hands of the subscribers. I felt sure it would be up and running by now, especially after the demonstration to the Society in September. It isn't at the time I pen this letter.

The Board had recently created a committee headed by Chuck Brewer to deal with some requests by AnyImage and the installation of the software. There are some serious issues that need to be resolved. Chuck has extensive knowledge of computers, databases and software systems. He is familiar with this project since AnyImage first came on the scene. I am grateful for his work in this area.

It'd be much more satisfying to me as the outgoing President to go out on a totally happy note of accomplishment in these good times. With the exception of the WDL software matter, I'd call this an almost perfect year. I do promise that we will keep working until we get what we want and need as a Society for our money spent and for the Library.

For all our members, I want to wish you good fortune and a prosperous New Year. Our old oilpatch saying applies: "keep turning to the right."

Philip M. Knighton



The Kansas Geological Society

Is proud to announce

**Walters Digital Library's new software is now finished
We will be introducing it to our digital membership
in the next few weeks**



Robert F. Walters
Digital Geological Library

Powered By
AnyImage
© 2007 GeoStudio



NEW CD's DVD's In the Foundation's Collection

Faces of the Earth—Discovery Channel
(2 DVD set—4 topics: Building the Planet, Shaping the Planet, Assembling America, Human World)

Planet Earth—Produced by the Discovery Channel
(a 5 DVD set)

The Mammoth Site—55 min.—Site near Hot Springs, SD, which is more than 26,000 yrs. old, which was a sinkhole in the Spearfish Shale (Triassic) which trapped as many as 100 Columbian Mammoths & Wooley Mammoths.



GEOCARESM
Benefits

Security for AAPG Members
& Their Families
Through Group Insurance

*Life
Health
Dental
Disability
And Supplemental Plans*

AAPG's
GeoCare Benefits Insurance Program
P. O. Box 9006
Phoenix, AZ 85068-9006
800-337-3140

**E-mail: geocarebenefits@agia.com
www.geocarebenefits.com**

From The Manager

Dear Members,

Well, many of you probably noticed that my last letter proclaimed that the new software for the digital library was up and running. This publication has to be completed far in advance of it's actual printing so I made a judgment call at the time I wrote my letter and we did not make that deadline. BUT, I am positive that it will be running by the time you read THIS Bulletin! If not, call me and complain! As a matter of fact, I am a little disappointed that I didn't get calls.....kind of tells me that no one reads my letter. Our intentions were to have it out by Oct. 1st but ran into some minor problems that needed attention prior to going "live". We will still get there and I think we will all be very pleased with the product. We should be introducing the program to our digital membership these first few weeks in November.



The KGS should be very proud of the great Mid-Continent Convention that we hosted . Kudos to Ernie Morrison for a great job of chairing the convention! We had nearly 500 attendees and everyone I have talked with said it was a very worthwhile convention. Thanks to all who played a role in making it happen. There are some photo highlights on page 28.

The KGS Shooting tournament was a great success again this year. We had nearly 60 people signed up (a record) and even though it rained in the morning, it turned out to be a beautiful day. We had a wonderful lunch provided by IPS (Pat Kane) See photos page 6. Please thank Larry Richardson & Rick Saenger for a great job making this event happen.

Our next upcoming event is our 2nd Annual GeoFest at the Survey in Lawrence. See the enclosed flyer for more information but this is scheduled for November 15th, a Thursday, and we will have a bus departing from Wichita again this year. Please call the library to get signed up.

This issue features our candidates for 2008 offices. Please make sure you vote, ballots will be coming out by November 1st. The candidates are featured on pages 14, 15, 16. I want to thank each individual that accepted the opportunity to run for office. This is YOUR Society and those of you who take time out of your busy schedules to give back to this Society is what makes it all work!

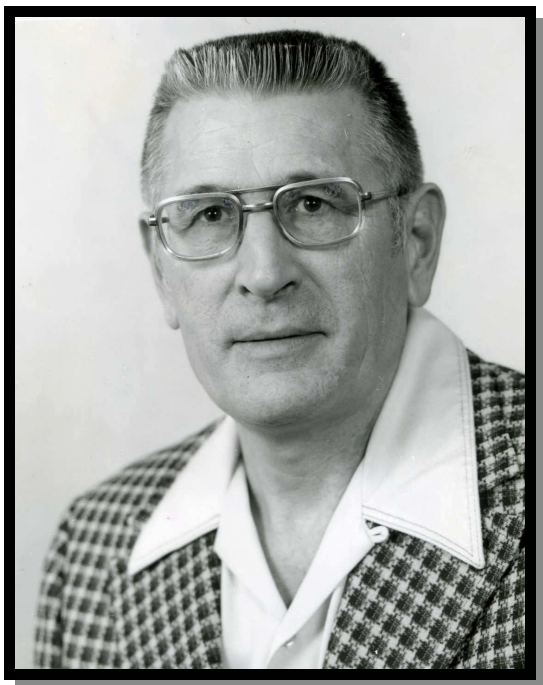
2007 has been a very busy year for us in the Library, with the remodeling that was done by our new building owners, the development of the new software for the digital library, the hosting of the AAPG Mid-Continent convention and the outpouring of data being released to us from the KCC. We are trying our best to keep up and get everything in the files for your use. I have staffed up for this purpose and we are processing approximately 4—6 boxes of logs (and other data) every week. The KCC is now caught up with moving the older data over to us and now will be concentrating on the newly released data and keeping us all on a much better schedule.

I want to take this opportunity to thank Phil Knighton for his leadership this year, as well as the rest of the Board of Directors. Ernie Morrison will be taking office January 1st and we look forward to his year as President as well. Again, we all need to thank these folks for taking time to be on the Board and guiding your Society. If you have never served on the board, it might be hard to understand the time it takes, so please thank these people when you see them.

I hope everyone had a good and profitable year and let's look forward to 2008 as another great year in the oil business!

Respectfully submitted,

Rebecca Radford
Manager



Over the years, one of the premier wellsite geologists in this area has been Al Stude. This is his story.

He was born in July 1924 on a farm north of Kinsley. His Dad was a farmer, who also taught math and science at the high school level, so the family moved quite often.

Al has three sisters: Marie who lives in Kinsley, Genevieve who lives in St. Charles, Missouri and Donna residing in St. Louis.

Grade school was attended in Leoti, Woodston and Burdett. He attended high school in Burdett, Hays and graduated from Kinsley High School in 1942. Al became familiar with geology at an early age from field trips that his father conducted for his students. On one excursion to the field they found a the fossil remains of a teleostean fish that was 15 feet, 4 inches long. This specimen now hangs in the Peabody Museum at Yale University.

Al entered the Marine Corp in 1943 and served as a aircraft mechanic at Marine bases in San Diego, Norman and Cherry point, North Carolina. He was discharged at Camp Pendleton in 1946. Following discharge, he was employed by Eby Construction Company and later was involved in doing carpentry in Arkansas.

In 1949, Al enrolled at the University of Wichita. Among his classmates were: Bob Douglas, Gus Messinger, Bob McCann, Charlie Shank and Jim Thompson. While at the university, Al feels that he gained knowledge from Drs. Ver Wiebe and Berg in particular.

Following graduation in 1954, Al joined Vickers Oil Co. where he worked with Lyle Thomas and in 1956 he joined Karl Becker at Sierra Petroleum. Al believes that Karl was a real mentor and if of the opinion that he learned almost as much from Karl as he did in college. Al recalls the first well he sat on being in Barton County where they reached the point at which they expected Arbuckle, but didn't find Arbuckle until 100' later.

In career as a wellsite geologist, Al watched many wells of wells for Clinton, Glickman, Sierra Barnett, Kewanee, Petroleum, Inc. and TGT. One particular Pet. Inc. well he recalls was a #1 Nichols in Barber, County which tested 14 MMCF in 2 minutes. Another test that Al recalls was located one mile east of the sewage disposal plant in Hoisington. The contractor was using water from the plant to drill the test. The trailer that Al was occupying had a hole in the floor. One night Al looked at the hole and there was a rat staring at him. A test that Al particularly remember was one that C & G Drilling was drilling in Graham, County near Penokee. They tested a Lansing zone and flowed a 2 inch stream of oil. This is one of the few tests that flowed oil from the Lansing in that area.

Al also worked part time for Lewis Drilling, Jerry Lewis and Hi Lewis. In the course of his long time activities in the field, Al encountered most of the geologists of the area. The one geologist that he would label as the biggest character that he did encounter was Bob Gebhart. He recalls that when Bob died in 1990, he was cremated and his ashes were placed in a "dry hole".

In 1968, he married Virginia Neidens and combined their families of Robert, who lives in Bellaire, Patricia, now deceased, and stepsons, Steve Neidens of Colorado Springs and Terry Neidens of Topeka.

Al essentially retired in 1991 following a heart attack and since that date has pursued his avocational interests of rock collecting and then cutting and polishing those rocks collected. He has continued his fossil hunting and while

in the field collected many projectile points and other pre-historic artifacts. He also enjoys Genealogy and has traced several families.

Al has maintained memberships in: Kansas Geological Society, Society of Independent Professional Earth Scientists. and the American Association of Petroleum Geologists.

This has been the brief story of a geologist who has had a very successful career, built on the foundation of hard work. With the knowledge derived from his own career, his advice to young geologists is to work hard and pay attention to the "old timers".



KGS Annual Business Meeting

**Wednesday
December 12th**

12:30 PM

**Will be held at the Wichita Bar
Association**

225 N. Market

Nebraska

• Kansas

Colorado

Olsson Associates

- Well Site Supervision
- Geologic Consulting
- Environmental Permitting
- Surveying
- Pipeline Controls Design
- GIS
- Geotechnical Engineering
- Hydrogeology
- Water Resources Engineering
- Water/Wastewater Engineering

Additional Services:

- Municipal Consulting
- Land Development

Jeff Johnson, Ph.D., Geologist - 402.458.5907
Clayton Erickson, Geologist - 308.995.8706
Dave Weinert, Geologist - 308.995-8706

www.oaconsulting.com

OLSSON ASSOCIATES

~The **TOP CHOICE** for 3D SEISMIC~

John H Beury III ~ Pres John Aguilar ~ Op. Mgr.

PHONE (316) 636 - 5552 FAX (316) 636 - 5572

3500 N. Rock Rd., Bldg 800, Suite B
Wichita, KS 67226

paragon@paragongeo.com

Member Profile

— *Albert Abercrombie* —



Albert Abercrombie's Story

This will be an attempt to tell in a few short lines, the story of one of the most successful oil operator's in Kansas and one of the real gentleman of our industry.

Albert was born in Garden City, Kansas in 1914. When he was nine months old, his mother was diagnosed with tuberculosis. At that time his father moved his mother to New Mexico where the climate and altitude were thought to be beneficial to the treatment of TB. Albert stayed behind and was cared for by his grandmother. His mother died when he was just two years old.

During the period that Albert was living with his grandmother, he spent time in Pueblo, Colorado, on a farm southeast of Denver, and Pawhuska, Oklahoma. A portion of his time was spent with his Dad in Garden City. He commenced his schooling with kindergarten and continued in school there until he and his Father moved to Oklahoma when Albert was 11 years old.

His father went to worked in the Garber - Covington Oilfield and they located in the small town of Covington which is just east of Enid and west of Perry. His father worked on the Shrader lease which was producing 22,000 BOPD from 160 acres. Albert earned extra money in Covington by picking up whiskey bottles and selling them

to the "bootleggers" to reuse. Albert had a lot of exposure to the oilfield operations in the area which helped him a great deal in his career.

In 1928, Albert and his father move to Roxana, Oklahoma which was located northwest of Guthrie between Marshall and Crescent. This town was named after Roxana Petroleum, a company established by Royal Dutch Shell in 1912. In 1927, production was established by Roxana Petroleum when they drilled a "gusher", the #1 McCully. By July of 1929, the #1 McCully had produced over 1,000,000 BO and the town had grown to a population of 1,000. Eventually, after a series of dry holes, it was determined that the field only covered 3 square miles. In 1930, the oil field workers made a quick exit from Roxana and eventually the town ceased to exist.

Albert's first job at Roxana, while it was booming, was keeping house at the bunkhouse where the single men who drove the teams in the field lived. For this he received \$ 0.25 per day. He also earned \$0.15 per day running the hand-operated washing machines and wringers for one of the teamster's wife.

It was during this period that Albert met Pierce Musgrove who was 6 months older than Albert. Pierce had quit school after the seventh grade at Braman, Oklahoma, but returned to school and in 9 years received a degree in Petroleum Engineering from the University of Oklahoma.

Albert attended high school in Marshall, Oklahoma, where he played right tackle on the football team and was also a member of the wrestling team. In high school, Albert met his first wife, Almeda and they were married in 1934. It was during the "Great Depression" and Albert worked at a number of jobs: dishwasher, mechanic, construction, harvesting etc. to make ends meet. With financial help from his Dad, he was able to purchase a pool hall that had failed. Soon he was making \$350 per month while his Dad, with a typical oil field job, was making \$80 per month. He stayed with this business for five years.

During this period, his daughter Ardith Lea was born and then a second girl Almeda Sue was born, but only lived for two days. Two months later his father who had provided so much support to Albert died. His wife died during a third pregnancy and the boy of that pregnancy did not survive.

Following these tragedies in Marshall, Pierce Musgrove and Albert joined Sohio in Kansas at their offices in Russell. Pierce as a petroleum engineer and Albert as a

sub-foreman. Later Pierce became superintendent and Albert was promoted to foreman. During his time with Sohio, Albert worked in the Fairport Field and lived in Gorham.

Pierce quit Sohio in 1947 and formed Musgrove Petroleum. Albert joined him in 1948. Mountain Iron and Supply owned 2/3rds of Musgrove Petroleum. Pierce owned 3/12^{ths} and Albert owned 1/12th. Albert paid for his part by completing wells. In 1949 he was out 225 – 24 hr. days, completing wells. He was sleeping in his car which he called the Chevrolet Hotel. Albert believes that in the five year period between 1948 and 1953 he worked on and completed more wells than anyone in Kansas.

Later Pierce and Albert bought the Mountain Iron people out by giving them our interest in the Larned Pool. For a period they were a part of American Hyde and Leather, but Pierce and Albert purchased the interest back and formed Musgrove Drilling in 1958. Pierce died unexpectedly in 1961 and Albert formed A. I. Abercrombie at that time.

One idea that Albert had was to build a slim-hole rig. This rig drilled an average of 36 holes per year for 18 ½ years. He also hired Jerry Langrehr who Albert describes as “a very hard working , intelligent young man” who Albert says could find oil.

Albert married Mildred Partridge in September 1958 and they joined their two families: Mrs. Gordon Ott, Mrs. George Foster, Jack Partridge, E.L Abercrombie, Berhl Abercrombie and James Partridge. They have 14 grandchildren and 15 great grandchildren.

In the sixties, Albert started buying farms. He now has 20 of them. He says although he doesn’t make a lot of money from the farms, he enjoys being a landlord rather than a “hired hand”.

Albert greatly values the friendship of Doyle Fair who he first met when Doyle was fourteen years old. Albert and Doyle’s father worked together. Albert and his wife, Middy have been very supportive of a number of organizations such as Senior Citizens, Operation Holiday, Salvation Army, Nature Conservancy and others. They have provided two scholarships at Wichita State one for the general public and one for children and grandchildren of their employees.

Albert has been honored with membership in the Kansas Oilmen’s Hall of Fame.

This brief story doesn’t do justice to the life of one of the “real oilmen” of our area.



Albert with his daughter in the field

MEET THE CANDIDATES

Vice President 2008 / President Elect 2009



Doug V. Davis, Jr.

Education: B.A. Geology, Wichita State University, 1973; Post Graduate Studies, WSU, 35 hours 1973-1976; Teaching Certificate Secondary Education, 1987, Wichita State University

Professional Experience: Geologist for Robert J. Gutru, 1974-1976; Vice-President High Plains Consulting, Inc., 1976-1978; President, Clark-Davis, Inc. 1978-1986; Consulting Geologist, 1986-1990; Consulting Geologist, Charter Production Co., 1990-1994; Consulting Geologist, 1994-1997; Right-of-Way Consultant, Koch Industries, Inc. 1998-2000; Consulting Geologist, American Energies Corp., 1997-Present

Professional Affiliations: Kansas Geological Society; Past member AAPG; Licensed Geologist #472 State of Kansas

KGS Board & Committees: Library Committee; Field Trip Committee; Chairman Annual Banquet; Assisted AAPG Mid-Continent Convention 1999, Social Activities Chair AAPG Mid-Continent Convention 2007



Lynn Watney

Education: B.S. Geology, Iowa State University, 1970; M.S. Geology Iowa State U., 1972, Ph.D. KU, 1985

Professional Experience: Chevron USA, New Orleans, 1972-1976; Research Associate, Kansas Geological Survey, 1976-1981; Section Chief, Kansas Geological Survey, 1981-1990; Executive Director KU Energy Research Center 1991-2007, Senior Scientific Fellow, Kansas Geological Survey, 2007-, Courtesy professor of geology at KU, KSU

Professional Affiliations: Kansas Geological Society, Kansas Geological Foundation, AAPG, SEPM, SPE

KGS Board & Committees: Field Trip Committee, 1989; Short course & technical program committees for AAPG Mid-Continent meetings 1985, 1991, 1999, 2007; Chair Technical Programs, 1998-99; KGS Board member, 2000.

MEET THE CANDIDATES

Secretary / Treasurer 2008—2009



Martin Dubois

Education: B.S. Geophysics option, Kansas State University, 1975; M.S. Geology, University of Kansas, 1980; Ph.D. Geology, KU 2007

Professional Experience : Exploration Geologist, Cities Service Oil Co., 1075-1977; Graduate Teaching Assistant, 1977-1979; Independent Geologist, 1979-1991; Exploration Manager John O. Farmer, Inc. 1991-1999; Research Geologists, Kansas Geological Survey, 1999-2007; Consulting Geologist, 2007-present

Professional Affiliations: Kansas Geological Society, Kansas Geological Foundation, AAPG, AAPG Division of Professional Affairs (CPG# 3622), AAPG Division of Environmental Geosciences, Rocky Mountain Association of Geologists, Kansas Licensed geologist #408

KGS Board & Committees: KGS Board member 1996-97; Delegate for KGS to AAPG, 1997-1999; Board advisor 1998, 2006; Chairman, KGS—Kansas Geological Survey October Geofest 2006



Beth Isern

Education: B.S. Geology, Wichita State University, 1983; M.S. Geology, Wichita State University, 1990

Professional Experience: John Jay Darrah, 1982—1987; Pintail Petroleum, Ltd., 1981—present

Professional Affiliations: Kansas Geological Society, Kansas Geological Foundation, NPS

KGS Board & Committees: KGS Board of Director 2006, 2007

MEET THE CANDIDATES

Board Member At Large 2008—2009



Steve Frankamp

Education: B.S. Geology, Wichita State University, 1980

Professional Experience: Geologist, A.L. Abercrombie, Inc., 1980-1986; Vice-President, A.L. Abercrombie, Inc., 1986-1999; President, Abercrombie Energy, LLC, 1999-present

Professional Affiliations: Kansas Geological Society; Kansas Geological Foundation; AAPG; Kansas Independent Oil & Gas Association; Trustee—Kansas Oil & Gas Resources Board

KGS Board and Committees: Golf Committee 1993, Computer Committee 1995-1996



Chellie Teal Mazzullo

B.S. Geology, Wichita State University, 1995; M.S. Geology Wichita State University, 1998

Professional Experience: Instructor in Geology, Wichita State University, 1997—2002; Independent Geologist 2001—2005; Consulting Geologist, Murfin Drilling Company, Inc., 2003-2005; Geologist, Murfin Drilling Company, Inc., 2005-present

Professional Affiliations: Kansas Geological Society, Kansas Geological Foundation, AAPG, SEPM, West Texas Geological Society, Permian Basin SEPM, SEG

KGS Committees: Picnic Committee Co-Chair, 2003; Picnic Committee Chair 2004—2006; Banquet Chair, 2004; Library Volunteer, 2002—2005

Kansas Geological Society's Geo-Families

In Kansas we have many families where the father is a geologist and one or more of his children are also. So far we have identified the following, but are there more??

W.W. Larsh and son Harry Larsh (Both served as President of the KGS)

John Brewer and sons Charles (John & Charles both served as KGS President) and David

Bob Dilts and son Jim & daughter Chris

Ted Sandberg and son Clarke

Earl Knighton and son Phil

Gus Messinger and daughter Debra (1st female President of the KGS)

James Daniels and son Jim and Jim's son, Bob

Marvin Frankamp and son Steve

Karl Becker and son Bruce

Roger McCoy and son Kevin

Calvin Noah and daughter Kitt

Todd Aikins and son Todd

W. Ainsworth and daughter Mary (Todd Aikins' mother)

George Mueller and son Scott

George Bruce (son or grandson) William Bruce

Polly Clark and Bruce Clark

Jay Galloway and Casey Galloway

Dick Green and sons Rich & Jerry

Jack Griggs and Richard Griggs

Jack Heathman and Sherry Heathman

Charles Spradlin and son Stephen

Bob Cowdery and son Craig

Sam Farmer and son Charles

Max Houston and Sam Houston

William Petersen and Bob Petersen

Merv Mace and Karma Mason and sister

Doug McGinness and son Doug II

Lee Poulsen and Dave Poulsen

George Reed and Bruce Reed

Glen Rupe and daughter Becca

Dean Seeber and Mike Seeber

Charlie King and Gina Spicer

Jim Thompson and sons Mark and Bobby and Mark's son James (soon to graduate KU)

Al Downing and son Mark

George Angle and son Steve

Richard Parker and son Steve

Millard Smith and son Dick

Louis Gehsch & son Bob Gensch & his son Gary Gensch

Bob Watchous, daughter Annie

Dick Linehan and son

Carroll Van Buskirk and son Steve

Innes Phillips and son Flip

Norm Stewart and son Bob

Kris Kennedy and son Adam (soon to graduate from WSU)

Charlie Steincamp and Chris

Cope Landis and Ben

JC Musgrove and Jim

Dick Shelly and Randall

Dan Merriam and daughter Anita

Richard P. Nixon and son Dan

Mike Dixon and son Ryan (soon to graduate WSU)

John Sutherland and daughter Jane

October 20, 2007



Dear Kansas Geological Society Members,

We're pleased to announce the *new* Walters Digital Library software, AnyImage GeoStudio, has been up and running for several months and at the beginning of November, will be made available to KGS for release to its members!

It's been just over a year since we forged the partnership with your Society and began the challenge of personalizing software for your online digital library and the Geological industry. Although AnyImage has been building and implementing projects similar to yours for years, this was our first experience in the geological field. The plan was to leverage our existing tools and technology to build software products that would both, be used to manage the Library's information and workload, as well as being used in other areas within your industry.

As many know, there were previous attempts at taking your data online and many separate technologies were used. When we began, there was no idea of the state of the existing data, and it wasn't until rolling up our sleeves and getting dirty that we found just how extensive the work would be to make your data usable. Although it was not originally planned, we invested over six months of dedicated effort to collecting and revitalizing the Library's data and it is currently in top shape with many added areas of functionality.

We took all of the information previously cataloged, then cleaned and massaged it into a very powerful data warehouse. In the process, we merged three large databases, collected and cleaned all of your data and images, added new data fields and values that allow for powerful searching, and incorporated new information designed to quickly place information at your fingertips. Here is a list of a just few of items that we worked through:

- ◆ Produced 186,974 clean Well Headers validated against the KCC Well database
- ◆ Increased document count from 937,589 to 1,422,218
- ◆ Reduced Operator list from 22,000+ to 8,670
- ◆ Reworked all API Numbers to be consistent and correct as possible
- ◆ Reworked all Document Types and added Document Sub Type values
- ◆ Reworked all Date values to be consistent
- ◆ Added Latitude and Longitude values (A must for proximity searching!)
- ◆ Added a Geographical Database for State, County, City, Zip and Area code searching
- ◆ Added data integrity constraints for all data contained in the new structure
- ◆ Reprocessed images for consistent and proper formats of either TIFF or JPEG
- ◆ Set actual dpi (dots per inch) to 200
- ◆ Stitched improperly stitched documents back together
- ◆ Merged front and back of Scout Tickets to one single page
- ◆ De-speckled, de-skewed, removed black borders, and auto-cropped every image
- ◆ We enhanced the quality of your images, in doing so, reduced the file size to an average of 20% of the original...further enhancing download speed

We also added numerous administrative functions, not previously available, which will make the ongoing maintenance and upkeep of the system possible.

Although we've come a long way, there is still a lot of work yet to be done. Like most things, an enterprise-level software system, requires ongoing care and feeding to keep running. We hope to be constantly enhancing our technology to create a better user experience and to make your job easier, and more profitable.

We're very excited about the results of our effort and anticipate you will be to. Please don't hesitate to provide feedback about your experience with our software as your input makes it better! We look forward to a long and productive relationship together.

Best Regards,

A handwritten signature in cursive script that reads 'David Tittle'.

David Tittle
AnyImage Software

WALTERS DIGITAL LIBRARY

Screen Shots of New Software

AnyImage Geo Studio - 15-167-20191 EV-LSM.tif (30%)

File Edit View Image Layers Adjustments Effects Window Help

Find By: Township: 14 S Range: 15 W Section: 29 Find Now Found 73 record(s) in 0 seconds.

Type	Size	ApiNumber	Township	Range	Section	WellName	Operator	County	Spot	Depth	Status
ApiNumber: 15-167-20147 (7 items)											
SC-SKL2	23 KB	15-167-20147	14 S	15 W	29	1 Foster-aley B	Shields Oil Producers Inc	Russell	CNE SW SE	3450	OIL
SC-IND	17 KB	15-167-20147	14 S	15 W	29	1 Foster-aley B	Shields Oil Producers Inc	Russell	CNE SW SE	3450	OIL
DL	0 KB	15-167-20147	14 S	15 W	29	1 Foster-aley B	Shields Oil Producers Inc	Russell	CNE SW SE	3450	OIL
EV-LSM	99 KB	15-167-20147	14 S	15 W	29	1 Foster-aley B	Shields Oil Producers Inc	Russell	CNE SW SE	3450	OIL
SC-SKL2	17 KB	15-167-20147	14 S	15 W	29	1 Foster-aley B	Shields Oil Producers Inc	Russell	CNE SW SE	3450	OIL
WL-GN	127 KB	15-167-20147	14 S	15 W	29	1 Foster-aley B	Shields Oil Producers Inc	Russell	CNE SW SE	3450	OIL
WL-RG	217 KB	15-167-20147	14 S	15 W	29	1 Foster-aley B	Shields Oil Producers Inc	Russell	CNE SW SE	3450	OIL
ApiNumber: 15-167-20191 (3 items)											
EV-LSM	94 KB	15-167-20191	14 S	15 W	29	1 Foster B	Allison & Black	Russell	NE SE NE	3193	ABD-DRY
SC-IND	12 KB	15-167-20191	14 S	15 W	29	1 Foster B	Allison & Black	Russell	NE SE NE	3193	ABD-DRY
SC-SKL2	9 KB	15-167-20191	14 S	15 W	29	1 Foster B	Allison & Black	Russell	NE SE NE	3193	ABD-DRY

15-167-20191 EV-LSM | 15-167-20147 EV-LSM | 15-167-20147 WL-GN.tif | 15-10G-54816 WL-MC.tif

Zoom: Left click to zoom in, right click to zoom out, middle click to slide

5.06in x 8.00in | 5.53in, 0.34in

**** Please watch the KGS website (www.kgslibrary.com) for information on upcoming user training sessions ****

AnyImage Geo Studio - 15-167-20147 SC-IND.tif (33%)

File Edit View Image Layers Adjustments Effects Window Help

Find By: Township: 14 S Range: 15 W Section: 29 Find Now Found 73 record(s) in 0 seconds.

Type	Size	ApiNumber	Township	Range	Section	WellName	Operator	County	Spot	Depth	Status
ApiNumber: 15-167-20147 (7 items)											
SC-SKL2	23 KB	15-167-20147	14 S	15 W	29	1 Foster-aley B	Shields Oil Producers Inc	Russell	CNE SW SE	3450	OIL
SC-IND	17 KB	15-167-20147	14 S	15 W	29	1 Foster-aley B	Shields Oil Producers Inc	Russell	CNE SW SE	3450	OIL
DL	0 KB	15-167-20147	14 S	15 W	29	1 Foster-aley B	Shields Oil Producers Inc	Russell	CNE SW SE	3450	OIL
EV-LSM	99 KB	15-167-20147	14 S	15 W	29	1 Foster-aley B	Shields Oil Producers Inc	Russell	CNE SW SE	3450	OIL
SC-SKL2	17 KB	15-167-20147	14 S	15 W	29	1 Foster-aley B	Shields Oil Producers Inc	Russell	CNE SW SE	3450	OIL
WL-GN	127 KB	15-167-20147	14 S	15 W	29	1 Foster-aley B	Shields Oil Producers Inc	Russell	CNE SW SE	3450	OIL
WL-RG	217 KB	15-167-20147	14 S	15 W	29	1 Foster-aley B	Shields Oil Producers Inc	Russell	CNE SW SE	3450	OIL
ApiNumber: 15-167-20191 (3 items)											
EV-LSM	94 KB	15-167-20191	14 S	15 W	29	1 Foster B	Allison & Black	Russell	NE SE NE	3193	ABD-DRY
SC-IND	12 KB	15-167-20191	14 S	15 W	29	1 Foster B	Allison & Black	Russell	NE SE NE	3193	ABD-DRY
SC-SKL2	9 KB	15-167-20191	14 S	15 W	29	1 Foster B	Allison & Black	Russell	NE SE NE	3193	ABD-DRY

15-167-20191 EV-LSM | 15-167-20147 EV-LSM | 15-167-20147 WL-GN.tif | 15-10G-54816 WL-MC.tif

Zoom: Left click to zoom in, right click to zoom out, middle click to slide

5.96in x 3.96in | 3.63in, 5.63in

AnyImage Geo Studio - 15-167-20191 EV-LSM.tif (18%)

File Edit View Image Layers Adjustments Effects Window Help

Find By: Township: 14 S Range: 15 W Section: 29 Find Now Found 73 record(s) in 0 seconds.

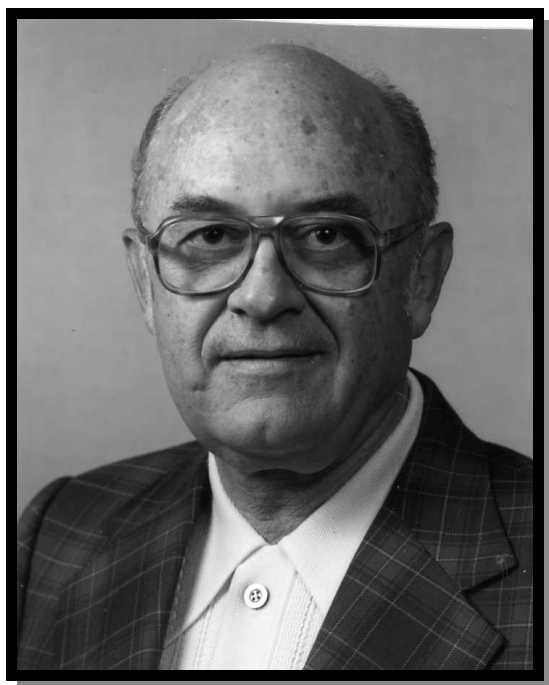
Type	Size	ApiNumber	Township	Range	Section	WellName	Operator	County	Spot	Depth	Status
ApiNumber: 15-167-20147 (7 items)											
SC-SKL2	23 KB	15-167-20147	14 S	15 W	29	1 Foster-aley B	Shields Oil Producers Inc	Russell	CNE SW SE	3450	OIL
SC-IND	17 KB	15-167-20147	14 S	15 W	29	1 Foster-aley B	Shields Oil Producers Inc	Russell	CNE SW SE	3450	OIL
DL	0 KB	15-167-20147	14 S	15 W	29	1 Foster-aley B	Shields Oil Producers Inc	Russell	CNE SW SE	3450	OIL
EV-LSM	99 KB	15-167-20147	14 S	15 W	29	1 Foster-aley B	Shields Oil Producers Inc	Russell	CNE SW SE	3450	OIL
SC-SKL2	17 KB	15-167-20147	14 S	15 W	29	1 Foster-aley B	Shields Oil Producers Inc	Russell	CNE SW SE	3450	OIL
WL-GN	127 KB	15-167-20147	14 S	15 W	29	1 Foster-aley B	Shields Oil Producers Inc	Russell	CNE SW SE	3450	OIL
WL-RG	217 KB	15-167-20147	14 S	15 W	29	1 Foster-aley B	Shields Oil Producers Inc	Russell	CNE SW SE	3450	OIL
ApiNumber: 15-167-20191 (3 items)											
EV-LSM	94 KB	15-167-20191	14 S	15 W	29	1 Foster B	Allison & Black	Russell	NE SE NE	3193	ABD-DRY
SC-IND	12 KB	15-167-20191	14 S	15 W	29	1 Foster B	Allison & Black	Russell	NE SE NE	3193	ABD-DRY
SC-SKL2	9 KB	15-167-20191	14 S	15 W	29	1 Foster B	Allison & Black	Russell	NE SE NE	3193	ABD-DRY

15-167-20191 EV-LSM | 15-167-20147 EV-LSM | 15-167-20147 WL-GN.tif | 15-10G-54816 WL-MC.tif

Zoom: Left click to zoom in, right click to zoom out, middle click to slide

5.06in x 8.00in | 4.06in, 0.57in

MEMORIAL ————— *Bob Douglass* —————



basis and stayed with the company until 1957. At that time he joined Aurora Gas and worked for them until 1962 when he was employed by Gabbert-Jones. Then from 1965 until 1970 he worked for McClure Oil and Patrick Petroleum. His last employment with a company before becoming a consultant was from 1970 until 1975 and during this period he was employed by Associates Oil and Gas and Bankhoff Oil.

Bob did considerable well site work as a consultant and developed a host of friends in the 'oil patch'. As a professional, he maintained membership in the AAPG and also the KGS where he served as program chairman.

The family requested that Bob be honored by contributions to the Kansas Geological Society, Harry Hynes Memorial Hospice, and West Evangelical Free Church.

With the death of Bob Douglass the profession of geology lost one of its most competent practitioners. Although he was born in Ponca City, Oklahoma in 1927, Bob was basically a Kansan, having arrived in Wichita when he was 10 years old. Bob had attended elementary school in Protection, Kansas prior to the family's move to Wichita. He attended Hamilton Intermediate School and then Wichita East where he graduated in 1945.

Following graduation, Bob was in the Navy for 24 months, which included a period where he was stationed in Tsingtao, China. After his naval service, he returned to Wichita and enrolled at the University of Wichita and graduated from that institution with a BA in Geology in 1951.

In 1950, Bob married Margaret Thompson of Sterling Kansas. They had five children: Bruce, now deceased, Becky Lamberson of Rogers, Arkansas, Gary, Wichita, Randy, Richardson, Texas and Tammi Gidlow of Lakenheath, England. They have 15 grandchildren and 10 great-grandchildren.

Bob's first professional employment was with Derby Oil while he was still at the University. Following graduation he joined Derby in 1951 on a permanent



The KGS would like to thank the following sponsors for their support of the Annual Clay Shoot

Allied Cementing Co., Inc.
 Andy's Mud & Chemical
 The Buckeye Corporation
 Central Kansas Surveying & Mapping
 Covey, The Well Watcher
 Kent Crisler
 Diamond Testing
 Dixon Energy, Inc.
 Eagle Creek Corporation
 Gressel Oilfield Service, Inc.
 H & B Petroleum Corporation
 Hesse Petroleum Co., LLC
 High Sierra Crude Oil & Marketing
 IPS—Great Lunch!!
 J & L Oilfield Services
 Jetstar
 Lippizzan Petroleum Corporation
 Roger L. Martin
 MBC Well Logging & Leasing
 Mud-Co / Service Mud, Inc.
 Mull Drilling Company
 Murfin Drilling Company
 Nalco Chemical
 National Oilwell
 NCRA
 Norseman Drilling, Inc.
 Pinnacle Seismic, LTD
 Pratt Well Service
 Raymond Oil Company
 Jim Rickerts
 Ricketts Testing, Inc.
 Semcrude, LP
 Don Shawver
 Sunrise Oilfield Supply
 Superior Well Service
 Sweetman Drilling
 Tidelands Geophysical
 Trident Steel
 Trilobite Testing, LLC
 Wedge Log Tech, Inc.

ADVERTISER'S DIRECTORY

	<i>page</i>
A2D Technologies	2
Abercrombie RTD, Inc	21
Allied Cementing Company, Inc	21
Duke Drilling	21
GeoCare Services AAPG	8
Kansas Geological Foundation	26
Lockhart Geophysical	21
LogSleuth	25
MBC	24
Murfin Drilling Company, Inc	21
Olsson Associates	10
PARAGON Geophysical Services, Inc	10
Petrobase	21
Professional Directory	22
Sunrise Oilfield Supply	6
Trilobite Testing	6
Walters Digital Library	13
Weatherford	27

ADVERTISER'S RATES: 2006

Full Page	B&W	Color
6 issues	\$2,000	\$2,500
3 issues	\$1,080	\$1,325
1 issue	\$480	\$525
1/2 Page		
6 issues	\$1,000	\$1,500
3 issues	\$540	\$825
1 issue	\$225	\$350
1/4 Page		
6 issues	\$600	\$900
3 issues	\$325	\$525
1 issue	\$150	\$250
1/8 Page		
6 issues	\$300	\$500
3 issues	\$175	\$325
1 issue	\$75	\$185
Professional Ad (Business Card)		
6 issues	\$90	\$180

Note: Full page, 1/2 page and 1/4 page ads receive an ad space in the KGS Directory at no additional charge.

WESTERN KANSAS
SOUTHERN NEBRASKA



EASTERN COLORADO
OKLAHOMA & TEXAS PANHANDLES

10 Drilling Rigs

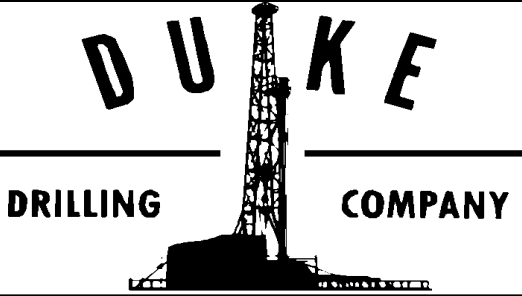
For contract information, please contact:
Blaine Miller / Drilling Department
316-858-8607 (Direct) or 316-267-3241

250 N. Water #300—Wichita, KS 67202

**10 Well Service Rigs &
Roustabout Services**

For contract information, please contact:
Alan Hays, Well Service Sprvsr.
785-421-2103 or 785-567-8739 (cell)

East Highway 24—Hill City, KS 67642



ROTARY DRILLING CONTRACTOR

620 Hubbard PO Box 823
Great Bend, KS 67530
Phone 620-793-8366

100 S. Main, Ste. 410,
Wichita, KS 67202
Phone 316-267-1331
Fax 316-267-5180

ABERCROMBIE RTD, INC.

Rotary Drilling
Contractor

Operating 4 Rigs in Western Kansas & NW Oklahoma

150 N. MAIN SUITE 801
WICHITA, KANSAS 67202-1383

(316) 262-1841



Great Bend (620) 793-5861 Ness City (785) 798-3843 Medicine Lodge (620) 886-5926



Acidizing Available at Medicine Lodge District

**Russell
(785) 483-2627**

**Oakley
(785) 672-3452**

Lockhart Geophysical Company

Call (303) 592-5220 FAX (303) 592-5225
Or E-mail lockden@xpert.net

2D & 3D Seismic Acquisition
Vibroseis Specialists



**JAPEX GDAPS-4 Distributed
System**

We'll give you seismic excellence

PETROBASE

The Digital Database for Western Kansas

High Quality Data Your Software Can Use
Includes All Central and Western Counties
All Wells — Dating from the 1800's

The Most Complete and Extensively Edited Data Available
Headers • Tops • Dsts • Perfs and Other Unique Features
Geologically Selected Formation Tops-Consistent Stratigraphic Nomenclature
Accurate Latitudes-Longitudes Tied to Digital Land Grids

Robert D. Dougherty, Geologist Phone (620)793-9055
P.O. Box 1065 Great Bend, Kansas 67530

or call WhiteStar Corporation in Denver - (303) 781-5182



STORES

Ness City, KS
800-589-5733

El Dorado, KS
316-321-9323

Garden City, KS
877-976-1700

Spivey, KS
316-532-5261

McCook, NE
308-345-1542

FULL LINE SUPPLY STORE

With Pump Shop
Offering New & Used
Pipe, Equip. & Fittings
Employee Owned

SALES OFFICES

Wichita, KS
800-777-7672

Great Bend, KS
316-792-3130
Mob: 316-786-4255

New Office
Hugoton, KS
620-428-6604

PROFESSIONAL DIRECTORY

Kirk Rundle
Consulting Geophysicist

3D Seismic Design, Acquisition to Processing QC.,
Interpretation and Analysis, Subsurface Integration
7340 W. 21st. N., Ste. 100
Wichita, Kansas 67205

Office: 316-721-1421 Fax: 316-721-1843
Home: 316-721-8962 Email:krundle@swbell.net

ROGER L. MARTIN

*Independent/Consultant
Petroleum Geologist*

200 East First Street, Ste. 405
Wichita, Kansas 67202

Office 620-438-2000 Cell: 316-250-6970

Field Cell: 316-655-1227

Email: rogermartingeo@yahoo.com

DON V. RIDER
Consulting Petroleum Geologist
**Well Site Supervision
Geological Studies
Completions**

8910 W. Central Park Ct.
Wichita, KS 67205

Office PH: 316-729-4445 Cell PH: 316-706-7199

ALFRED JAMES III

Petroleum Geologist
Kansas - Colorado - Alaska

SIPES #1111

Wichita, Kansas 67202

Off: (316) 267-7592

Tel.: (972) 712-9036
Fax: (972) 712-0258
Cell: (214) 223-1784

LANG J. FUQUA
Certified Petroleum Geologist

4201 Tanglewood Ln.
Frisco, Texas 75035

M. Bradford Rine

Honorary Life Member—Kansas Geological Society

*Licensed Geologist—KS. #204
Registered Professional Geologist—Wyo. # 189
Certified Geologist—A.A.P.G. # 2647
S.I.P.E.S. # 1584 S.P.E. #109833-4*

PROSPECT EVALUATION • PROSPECT GENERATION
WELLSITE SUPERVISION • EXPERT TESTIMONY • OPERATIONS
PROPERTY EVALUATION • RESERVOIR STUDIES

Suite 415
100 S. Main
Wichita, KS 67202

DRLG./COMP. CONSULTATION

Office: (316) 262-5418
Fax: (316) 264-1328
Cell: (316) 772-6829

WESLEY D. HANSEN

Consulting Geologist

Well site Supervision
Geologic Studies

212 N. Market, Ste 257
Wichita, Kansas 67202

Off: (316) 263-7313

Mobile: (316) 772-6188



Paul Gunzelman
President

phone 316.634.6026

fax 316.634.2716

Email p.gun@sbcglobal.net



KEVIN L. KESSLER

INDEPENDENT/CONSULTING PETROLEUM GEOLOGIST

WELLSITE SUPERVISION • GEOLOGIC RESEARCH
OIL & GAS PROSPECTS
KANSAS & EASTERN COLORADO

MAILING ADDRESS

1199 N. PONDEROSA RD.
BELLE PLAINE, KS 67013

PHONE

RES.: (316) 522-7338
MOBILE: (316) 706-6636

EMAIL: KKESSLER1199@AOL.COM

ROBERT J. GUTRU

Geologist

300 Farmers & Bankers Bldg.
200 East First Street

Wichita, Kansas 67202

Off: (316) 265-3402

PROFESSIONAL DIRECTORY

MELLAND ENGINEERING

Petroleum Engineering & Geological Consulting

James E. Melland, P.E.

Owner

Office: (620) 241-4621 Fax: (620) 241-2621

Cell Phone: (661) 319-5950

Email: jemelland@sbcglobal.net

Jamesm@mellandengineering.com

P.O. Box 841, McPherson, KS 67460

KGJ ENTERPRISES

Contract Oil & Gas Accounting &
Office Management

Kathryn G. James, MBA
4278 SW 100th ST.
Augusta, KS 67010

(316) 775-0954
(316) 250-5989
kgjames@onemain.com

MBC

WELL LOGGING & LEASING

UNMANNED GAS DETECTORS

MUD LOGGING

CERTIFIED INSTRUMENT TECH

SERVING THE KAN-O-TEC AREA

SINCE 1990

AUSTIN GARNER

MARLA GARNER

24—HOUR PHONE (620) 873-2953

MEADE, KANSAS

Card Set For Sale

*In 6 File Cabinets
Up to date into mid-late 90's*

Price is Negotiable

Contact:

Leland Young

Little River, KS

620-897-6601

Help Wanted! Integration Project

If you have any time you could give to
the
Library, we have
projects that could move a little faster
with some
**Expert Professional
Geologists**

Just a few hours a week
would make such a
difference.

To volunteer, please contact Ted Jochems
or Rebecca at the Library
265-8676

THE ON-LINE BULLETIN IS NOW IN PDF FORMAT

Check out the complete KGS
Bulletin on our web site
www.kgslibrary.com

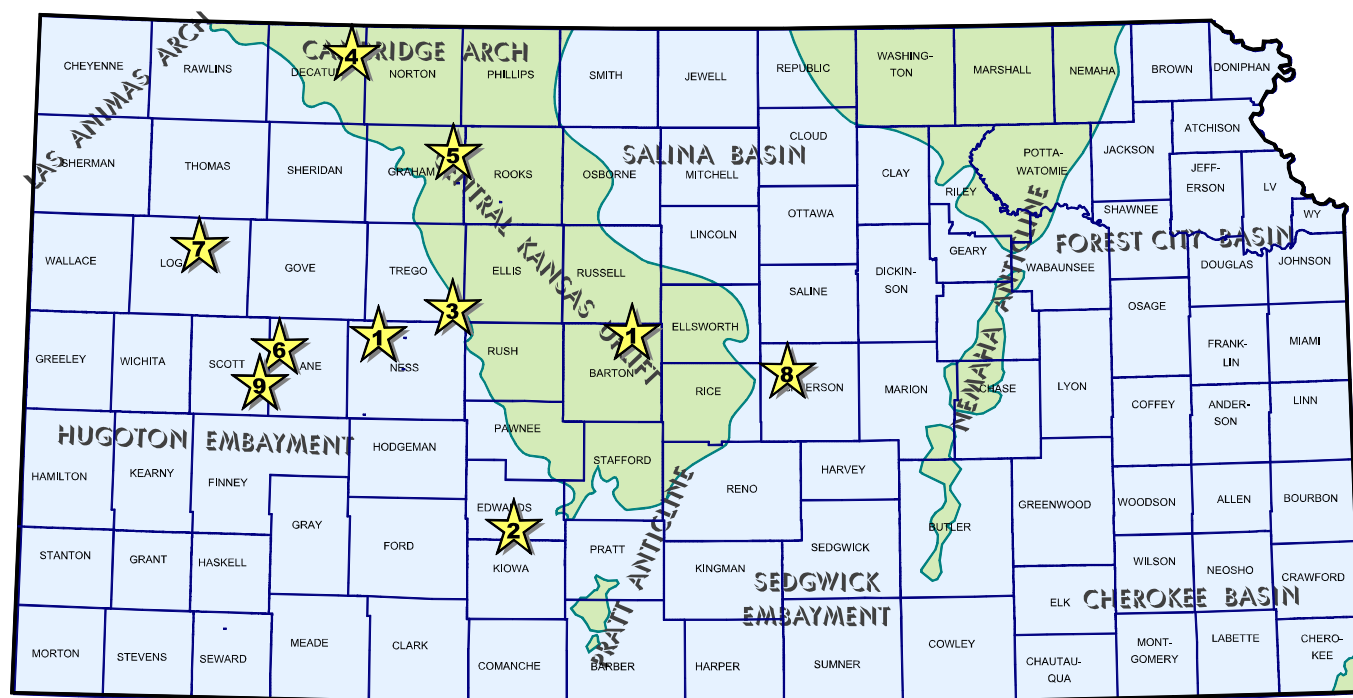
A simple way to help your Society save money
would be to let us know if you like viewing the
Bulletin on line. This would allow us to reduce
our mailing & printing costs of sending the Bulletin
to every member.

We are glad to keep mailing it to you but if you
are satisfied with reading on-line, please just let
us know.

316-265-8676

Exploration Highlights

By John H. Morrison, III
Independent Oil & Gas Service



1. DaMar Resources, Inc. , of Hays, Kansas, has successfully completed two wildcat wells that have established new oil fields in Barton and Ness counties. Both new reservoirs were discovered on the basis of 3-D seismic data interpretation.

In Barton County, the firm's Staudinger #1, located in the NW/4 of section 31-T16s-R12W, is on pump making 77.65 barrels of oil and 35.74 barrels of water per day. The well discovered an isolated feature nearly three-quarters mile east of the giant Trapp Field. Production commenced on October 4, 2007 with commingled pay coming from the Lansing-Kansas City 'A', 'H', and 'J' zones and the Arbuckle formation. L. D. Drilling tools bottomed the well at a total depth of 3,500 feet. The new Staudinger Field lies three and one quarter miles north and four and one half miles west of Odin, Kansas.

In Ness County, DaMar's #1 Marhofer Farms has been completed for 87.4 barrels of oil and 13.06 barrels of water per day. The 4610 foot deep well is pumping crude oil from perforations in the Mississippian formation. Hole filled with over 3200 feet of oil after a 250 gallon acid job was given. The Marmaton (Fort Scott) was also tested but yielded only a trace of oil on swab down. Operator placed the well on pump on September 14, 2007 at site located about one and one-half miles east of the town of Arnold, Kansas. The new

Marhofer Field is located three-quarters mile north of the Dubbs Field.

2. Mid-Century Energy Corporation has added their second Lansing-Kansas city gas producer to the Bordewick East Field in Edwards County since they discovered the new pay source in the field earlier this year. The #2 Lester Derley, spotted in the NW/4 of section 23-T26s-R18W, has been completed as flowing 350,000 cubic feet of gas daily from LKC perforations. First gas sales commenced on June 15, 2007. Field area is situated about five miles west of Fellsburg, Kansas. The development well was drilled to a total depth of 4800 feet by Warren Drilling tools.

3. Pintail Petroleum, Ltd. has discovered new Marmaton oil reserves within the confines of the Witthuhn Northwest Field in Trego County, where previously only the Cherokee Sands had produced oil. Pintail is credited with opening the field in June 2006. The Kuppetz (TA) #4-4, located in the SW/4 of section 4-T15s-R21W, was completed for an undisclosed potential on August 25, 2007. The development well is producing crude oil from the Marmaton (Fort Scott) limestone formation. Rotary total depth is 4170 feet. Site lies three and one half miles northeast of Brownell, Kansas.

4. Murfin Drilling Company, Inc. has completed their Jolly #1-21 as a new pool discovery that is producing an unknown amount of oil from the Lansing-Kansas City limestones. Located in the SW/4 of section 21-T2s-R26W, Decatur County, the Jolly Rancher pool discovery well was placed on the pump on August 15, 2007. Total depth is 3770 feet. Site lies nearly three-quarters mile northeast of LKC oil wells in the Shirley Field, which Murfin also discovered in 1998. The new oilfield is located one and one-half miles north and three miles west of Norcatour, Kansas.

5. Shawnee (Toronto) and Lansing-Kansas City 'A' zones are producing an undisclosed amount of oil at John O. Farmer, Inc.'s #1 Holsman, spotted in the SE/4 of section 30-T7s-R21W, in Graham County. The wildcat well establishes the Holsman Field. Commercial production began on August 1, 2007. Well site is located about three and one-quarter miles north of the town of Bogue, Kansas. Operator found the new reserves three-quarters mile east of established oil production in the Buckner Northeast Field, which also produces Arbuckle oil. Total depth of the Holsman well is 3800 feet.

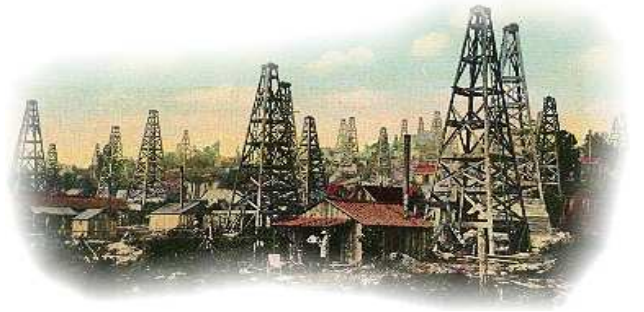
6. Approximately five-eighths mile north of pumping oil wells in the four well Penka Field (Marmaton oil) in Lane County, Ritchie Exploration, Inc. has completed it's Dowd #1-28C as a commercial well producing oil from the Altamont member of the Marmaton, as well as from the Lansing-Kansas City zones. The 4612 foot deep well was drilled in the SW/4 of section 28-T17s-R30W, about four miles southwest of Healy, Kansas. Production rate is confidential. The new field has not been the Dowd Field..

7. Russell Oil, Inc. has completed a new pool discovery in the SW/4 of section 35-T12s-R34W, about six and one-quarter miles northeast of Russell Springs, Kansas in Logan County. The Baker-Bartlett Unit #1 discovery well is producing crude oil from the Lansing-Kansas City formations at an undisclosed rate. The well was drilled to a total depth of 4,680 feet by L. D. Drilling tools. The new B - B pool opener is located over one and three-quarters miles southeast of the Kyle Field which also produces LKC oil.

8. A new unnamed Viola oil field has been discovered by Vincent Oil Corporation in the NE/4 of section 25-T18s-R4W in McPherson County. The firm's Priddy #1-25 has opened the was drilled to a total depth of 3800 feet by Warren Drilling

tools. The well was put on pump on August 10, 2007 at an undisclosed rate. Site lies over one mile northeast of known Simpson oil production in the Amerson Field, or five miles northwest of McPherson, Kansas.

9. A new dual pay oil field, Deardon Field, has been established by Lario Oil & Gas Company with the completion of the Dearden Trust #1-5 in Scott County. The well was drilled to a total depth of 4,750 feet in the SW/4 of section 5-T19s-R31W. Operator is recovering an unknown amount of oil from perforations made in the Lansing-Kansas City and Marmaton (Fort Scott) formations. Well site lies over one mile northwest of the multiple pay Grigston Field, or seven and one-half miles southeast of Scott City, Kansas. The new field has not been named.



KGS Annual Business Meeting

Wednesday, December 12th

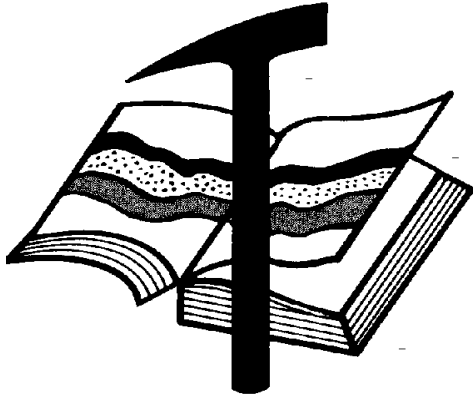
**12:30 PM
225 N. Market**

Mark your calendars!!

KGS Annual Banquet & Awards

Friday

**January 25, 2008
At the Petroleum Club**



Kansas Geological Foundation

Web Site: www.kgfoundation.org

**212 North Market
Wichita, Kansas 67202**

A not-for-profit educational and scientific corporation

GOALS:

- promote geology and earth science
- preserve geological records
- establish memorials and endowments
- support field trips and seminars
- financial aid and grants to students

PLEASE HELP SUPPORT THE FOUNDATION

Kansas Geological Foundation Services

The Kansas Geological Foundation provides the following services as a part of the organization's commitment to educate the public regarding earth science.

Speaker's Bureau

A list of speakers available to talk about various aspects of geology may be obtained by contacting Janice Bright at the KGS Library, 265-8676. This service is free to the public.

DVD/Videotape Library

The KGF maintains a DVD & videotape library focused primarily on the various fields of earth science. These tapes may be checked out without charge by the public. To obtain a list of tapes, please contact the KGS Library, 212 N. Market, Ste. 100, Wichita, KS 67202, or call Janice Bright at 265-8676.

The Kansas Geological Foundation was founded in March, 1989 as a not-for-profit corporation under the guidelines of section 501(c)(3) of the tax code to provide individuals and corporations the opportunity to further the science of geology. It is dedicated to providing charitable, scientific, literary and educational opportunities in the field of geology for the professional geologist as well as the general public.

KGF can receive in-kind donations through which the donor may receive a tax deduction. Of equal importance, the KGF provides the financial resources to sort, process and file this data at the KGS library. If you have a donation to make, please contact the KGF at 265-8676.

Your tax-deductible membership donation helps to defray the cost of processing donations and to support public education programs about the science of geology. Annual membership begins at \$50.00 per year. Donations of \$100.00 or more are encouraged through the following clubs:

Century Club	\$ 100 to \$ 499
\$500 Club	\$ 500 to \$ 999
Millennium Club	\$1000 to \$5000
President's Club	\$5000 and over

Highlights from the 2007 Mid-Continent Section Convention

The convention was a great success with 450—500 attendees!

Here are some highlight photos of the convention



Convention Chairman, Ernie Morrison



**Director of the USGS
Dr. Mark Meyers**



Fred James, Mark Meyers & Doug Davis

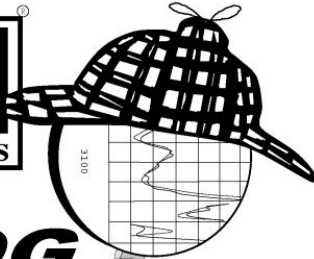


**Bob Cowdery with Chuck Brewer
announcement of the Robert D. Cowdery Scholarship**



**Convention Field Trip to SE Kansas to look at the Pennsylvanian Oread
Led by Dr. Wan Yang & Dr. Sal Mazzullo, Wichita State University**





LOG
Sleuth
2000
AND RASTER IMAGE
WELL LOGS

OVER
5 MILLION
LOGS
AVAILABLE

1-800-310-6451

SALES@MJLOGS.COM

CALGARY • DENVER

U.S.A.
LOGS FOR:

ALABAMA
ALASKA
ARKANSAS
ARIZONA
CALIFORNIA
COLORADO
FLORIDA
IDAHO
ILLINOIS
INDIANA
KANSAS
LOUISIANA
MICHIGAN
MISSOURI
MISSISSIPPI
MONTANA
NEBRASKA
NEVADA
NEW MEXICO
NORTH DAKOTA
OKLAHOMA
OREGON
SOUTH DAKOTA
TEXAS
UTAH
WASHINGTON
WEST VIRGINIA
WYOMING

CANADIAN
LOGS FOR:

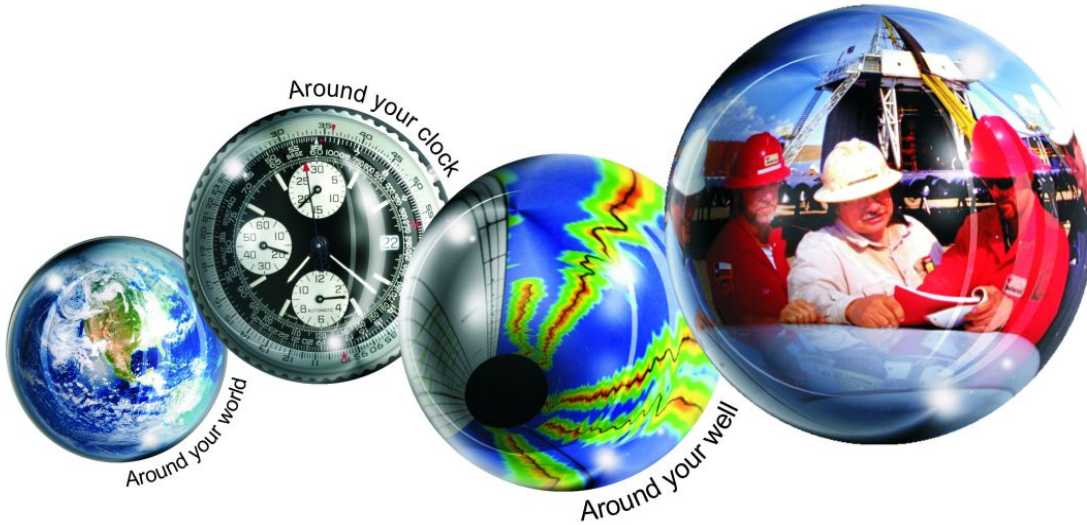
ALBERTA
BRITISH COLUMBIA
SASKATCHEWAN
MANITOBA
FEDERAL AREAS

Kansas Geological Foundation Memorials

KGS Member	Date Deceased	Memorial Established	KGS Member	Date Deceased	Memorial Established
Dan Bowles	09/89	1990	Warren E. Tomlinson	01/00	2000
John Brewer	10/89	1990	James A. Morris	01/00	2000
George Bruce	08/89	1990	Eric H. Jager	03/00	2000
Robert Gebhart	01/90	1990	Kenneth W. Johnson	03/00	2000
Ray Anderson, Jr.	11/90	1990	Dean C. Schaake	03/00	2000
Harold McNeil	03/91	1991	Fred S. Lillibridge	05/00	2000
Millard W. Smith	08/91	1991	Jerry A. Langrehr	07/00	2000
Clinton Engstrand	09/91	1991	Clark A. Roach	07/00	2000
M.F. "Ted" Bear	10/91	1991	Floyd W. "Bud" Mallonee	10/00	2000
James & Kathryn Gould	11/91	1991	Ralph W. Ruuwe	09/00	2000
E. Gail Carpenter	06/91	1993	Robert L. Slamal	02/01	2001
Benton Brooks	09/92	1992	Jerold E. Jespersion	06/01	2001
Robert C. Armstrong	01/93	1993	William A. Sladek	06/01	2001
Nancy Lorenz	02/93	1993	Harlan B. Dixon	06/01	2001
Norman R. Stewart	07/93	1993	Edward B. Donnelly	08/01	2001
Robert W. Watchous	12/93	1993	Richard P. Nixon	02/02	2002
J. George Klein	07/94	1994	Robert W. Frensley	12/01	2002
Harold C.J. Terhune	01/95	1995	Gerald W. Zorger	01/02	2002
Carl Todd	01/95	1995	Don L. Calvin	03/02	2002
Don R. Pate	03/95	1995	Claud Sheats	02/02	2002
R. James Gear	05/95	1995	Merle Britting	2002	2002
Vernon Hess	06/95	1995	Harold Trapp	11/02	2002
E. K. Edmiston	06/95	1995	Donald M. Brown	11/02	2003
Jack Rine	07/95	1995	Elwyn Nagel	03/03	2003
Lee Cornell	08/95	1995	Robert Noll	09/03	2003
John Graves	10/95	1995	Benny Singleton	09/03	2003
Wilson Rains	10/95	1995	Jay Dirks	2003	2003
Heber Beardmore, Jr.	09/96	1996	J. Mark Richardson	02/04	2004
Elmer "Lucky" Opfer	12/96	1996	John "Jack" Barwick	02/01	2004
Raymond M. Goodin	01/97	1997	Richard Roby	03/04	2004
Donald F. Moore	10/92	1997	Ruth Bell Steinberg	2004	2004
Gerald J. Kathol	03/97	1997	Gordon Keen	03/04	2004
James D. Davies	08/88	1997	Lloyd Tarrant	05/04	2004
R. Kenneth Smith	04/97	1997	Robert J. "Rob" Dietterich	08/96	2004
Robert L. Dilts	05/97	1997	Mervyn Mace	12/04	2004
Delmer L. Powers	06/72	1997	Donald Hoy Smith	04/05	2005
Gene Falkowski	11/97	1997	Richard M. Foley	06/05	2005
Arthur (Bill) Jacques	01/98	1998	Wayne Brinegar	06/05	2005
Bus Woods	01/98	1998	Jack Heathman	05/06	2006
Frank M. Brooks	03/98	1998	Charles Kaiser	09/06	2006
Robert F. Walters	04/98	1998	Rod Sweetman	08/06	2006
Stephen Powell	04/98	1998	Karl Becker	10/06	2006
Deane Jirrels	05/98	1998	Frank Hamlin	10/06	2006
William G. Iversen	07/98	1998	Marvin Douglas	12/06	2006
Ann E. Watchous	08/98	1998	Robert W. Hammond	04/07	2007
W.R. "Bill" Murfin	09/98	1998	Eldon Frazey	04/07	2007
Donald L. Hellar	11/98	1998	Pete Amstutz	05/07	2007
Joseph E. Rakaskas	01/99	1999	Charles Spradlin	05/07	2007
Charles W. Steincamp	02/99	1999	Robert "Bob" Douglass	09/07	2007
Robert and Betty Glover	10/96	1998			
Howard E. Schwerdtfeger	11/98	1999			
W. W. "Brick" Wakefield	03/99	1999			
V. Richard Hoover	01/00	2000			



Weatherford®



All Around You

**Weatherford has always
been driven by your needs.**

Now, with the addition of Precision Energy Services we're continuing to build a world of skills, services and technologies that revolve – and evolve – around you.

The result?

An expanded global network of 25,000 people, 730 service bases and 87 manufacturing facilities in 100 countries.

This increased local knowledge and service is there to support you anywhere, anytime. From midday in the Middle East to midnight in the middle of nowhere.

And with greatly strengthened capabilities in the critical evaluation skills of directional drilling and wireline logging, we can do even more to improve the profitability and productivity of your wells.

To see how our sphere of services can work for you, visit www.weatherford.com or contact either your Weatherford or former Precision Energy Services representative.

Drilling | Evaluation | Completion | Production | Intervention

Kansas Geological Society & Library
212 North Market, Suite 100
Wichita, Kansas 67202

PRSRT STD US POSTAGE PAID WICHITA KS PERMIT NO 923
--

KGS BULLETIN
November—December 2007

November 2007

SUN	MON	TUE	WED	THU	FRI	SAT
				1	2	3
4	5 Tech Talk	6	7	8	9	10
11	12 Tech Talk	13 KGS Board	14	15 GEOFEST	16	17
18	19 Tech Talk	20	21	22	23	24
				Thanksgiving Library Closed		
25	26	27	28	29	30	

December 2007

SUN	MON	TUE	WED	THU	FRI	SAT
						1
2	3 Ballots Due Tech Talk	4	5	6	7	8
9	10 Tech Talk	11 KGS Board	12 Annual Business Mtg.	13	14	15
16	17 Tech Talk	18	19	20	21	22
23	24	25	26	27	28	29
	Christmas Holiday—Library Closed					
30	31					