



Established 1925

KANSAS GEOLOGICAL SOCIETY

# BULLETIN

Volume 83 Number 1

January—February 2008

## **IN THIS ISSUE**

*Honorary Member Profiles:*

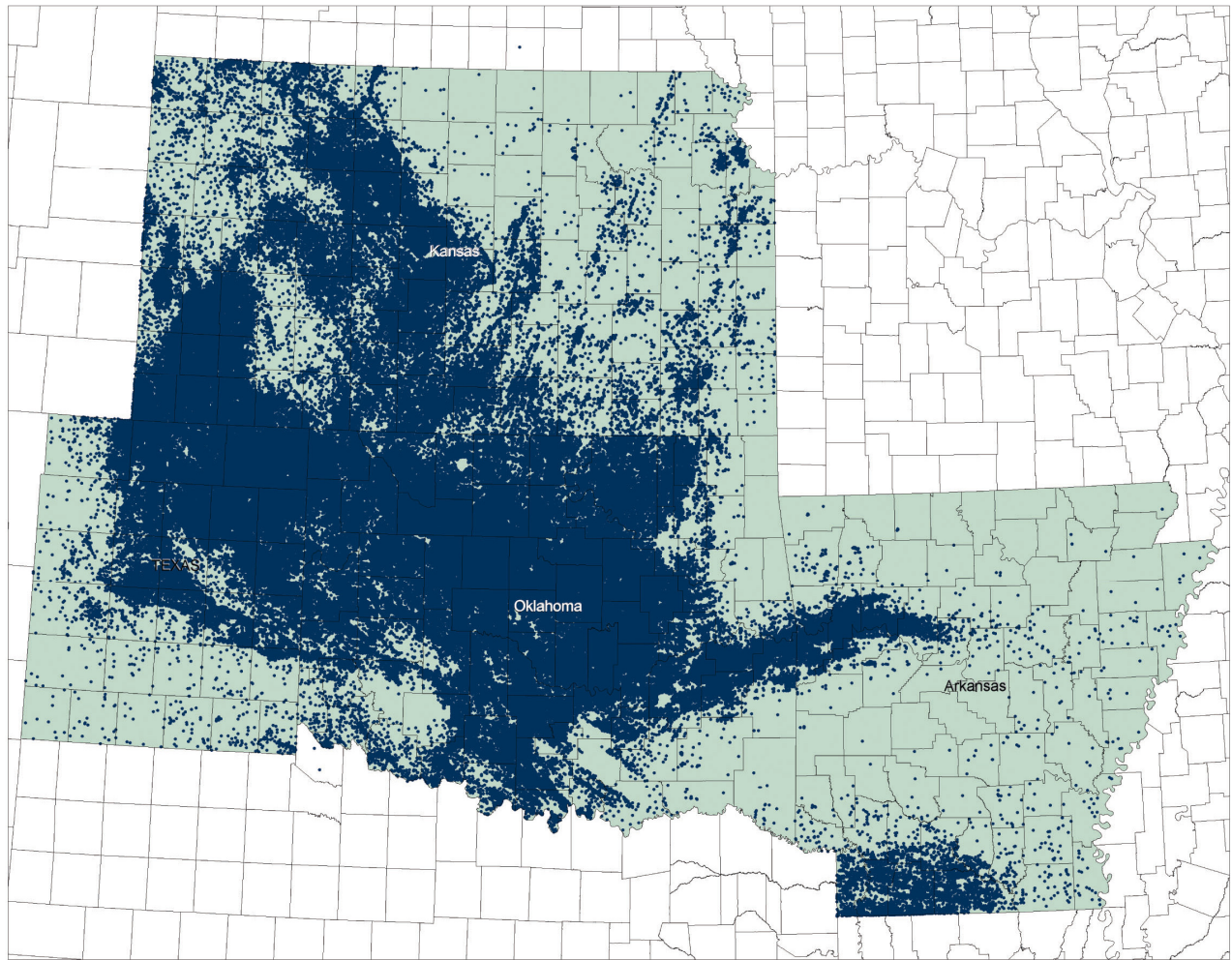
*Don Beauchamp*

*Debra FitzGerald*

**Meet The New  
2008 KGS  
Board of Directors**

Page 14





Mid-Continent:  
**ARE YOU READY?**



Exploration and development activity is on the rise. As you seek to capitalize on the industry's momentum, don't let well log data get in the way. No company has removed more barriers between people and their well log data than TGS Geological Products and Services. With coverage of all the crucial wells in the Mid-Continent, North America and hydrocarbon provinces worldwide, TGS will get you ready for the opportunities to come.



Geophysical Products



Geological Products



Imaging Services

[www.tgsnopec.com](http://www.tgsnopec.com)

# Table of Contents

---

## Features:

### Honorary Member Profiles:

|                                    |           |
|------------------------------------|-----------|
| <b>Don Beauchamp..</b> .....       | <b>10</b> |
| <b>Debra FitzGerald ....</b> ..... | <b>12</b> |

|   |           |
|---|-----------|
| <b>2008 KGS Board of Directors.....</b> | <b>14</b> |
|---|-----------|

|  |           |
|--|-----------|
| <b>Altamont Oil Seeps in Labette County, Kansas.....</b> | <b>16</b> |
| <i>by Michael Lichtenwalter/Collette Burke, WSU</i>      |           |

## Book Review

|                                 |           |
|---------------------------------|-----------|
| <b>Meltdown.....</b> .....      | <b>13</b> |
| <i>review by Robert Stolzle</i> |           |

## Departments & Columns:

|   |           |
|---|-----------|
| <b>President's Letter .....</b>           | <b>7</b>  |
| <b>From the Manager.....</b> .....        | <b>9</b>  |
| <b>Professional Directory .....</b>       | <b>19</b> |
| <b>Advertiser's Directory .....</b>       | <b>17</b> |
| <b>KGS Tech Talks .....</b>               | <b>.4</b> |
| <b>Kansas Geological Foundation .....</b> | <b>23</b> |
| <b>Exploration Highlights .....</b>       | <b>21</b> |
| <b>KGF Memorials.....</b> .....           | <b>26</b> |

### ON THE COVER:

The Hutchinson Salt is a member of the Lower Permian Sumner Group. This approximately 36 cubic feet (3x3x4 feet) piece is the largest single piece of the re-crystallized salt excavated. This type of salt formed shortly after deposition and is the only type that has inclusions of water bubbles which are "time capsules" of Permian water.

*Photo taken by field trip participant, David Hale, from Wichita Falls, Texas*

---

### CALL FOR PAPERS

The Kansas Geological Society Bulletin, which is published bimonthly both in hard-copy and electronic format, seeks short papers dealing with any aspect of Kansas geology, including petroleum geology, studies of producing oil or gas fields, and outcrop or conceptual studies. Maximum printed length of papers is 5 pages as they appear in the Bulletin, including text, references, figures and/or tables, and figure/table captions. Inquiries regarding manuscripts should be sent to Technical Editor Dr. Sal Mazzullo at [salvatore.mazzullo@wichita.edu](mailto:salvatore.mazzullo@wichita.edu), whose mailing address is Department of Geology, Wichita State University, Wichita, Kansas 67260. Specific guidelines for manuscript submission appear in each issue of the Bulletin, which can also be accessed on-line at the Kansas Geological Society web site at <http://www.kgslibrary.com>

# SOCIETY Technical Meetings

*Spring 2008*

*Please Note: Most Tech Talks Will Be On Tuesdays This Spring*

*Jan. 15—Dr. James Aber, Emporia State University, “Physiography”*

*Jan. 22—Dr. Jim Puckette, Oklahoma State,*

*Jan. 29—Dr. Tony Walton’s Petroleum Class , University of Kansas*

*Feb. 11—MONDAY—Joe Struckel, Edmond, OK*

*Feb. 19—Ernie Morrison, “Sand Arroyo Field, Stanton, CO*

*Feb. 26—Oil & Gas Taxation—H & R Block*

*Mar. 11—Don Whitmore , “Fate & Identification of Oil-brine Contamination in Different Hydrogeologic Settings”*

*Mar. 18—TBA*

*Mar. 25—Lynn Watney, “Geo-Engineering Modeling of Shallow Upper Penn. Sandstones Associated with Recovery of Low BTU gas in Chase County”*

*Apr. 15—TBA*

*Apr. 22—AAPG Convention in San Antonio, TX*

*Apr. 29—TBA*

*May 13—Susan Nissen*

*May 20—TBA*

*May 27—TBA*

***Attention!***

***Location for Technical Meetings***

*All KGS technical presentations are held at 12:30 p.m. at the **Wichita Bar Association**, located at **225 N. Market**, ground floor conference room, unless otherwise noted.*

*Note: For those geologists who need 30 points to renew their licenses, there will be a sign-in sheet at each presentation and also a certificate of attendance.*



## BOARD OF DIRECTORS

---

**PRESIDENT**  
Ernie Morrison

**PRESIDENT-ELECT**  
Lynn Watney

**SECRETARY**  
Beth Isern

**TREASURER**  
Rick Saenger

**DIRECTORS**  
Robert Stolzle  
Phil Knighton  
Steve Frankamp

**ADVISORS**  
Chuck Brewer  
Kent Crisler

## COMMITTEE CHAIRMEN

---

Advertising  
Advisory

Kent Scribner  
Chuck Brewer  
Kent Crisler

Annual Banquet  
Bulletin

Doug Davis  
*Editor*  
Wes Hansen  
*Technical Editor*  
Sal Mazzullo

Continuing Education  
Distinguished Awards  
Directory  
Environmental  
Field Trip  
Fishing Tournament  
Future Plans  
Golf

Robert Cowdery  
Philip Knighton  
Larry Richardson  
Kent Matson  
Larry Skelton  
Randy Teter

Historian  
Investment  
Library

Larry Skelton  
Rick Saenger  
Roger Martin  
Ted Jochems

Membership  
Nomenclature  
Picnic

Larry Friend  
John H. Morrison, III  
Marjorie Crane

Public Relations  
Shooting Tournament  
Technical Program  
Ticket Sales

Robert Cowdery  
Larry Richardson  
Robert Cowdery  
Bill Shepherd

## A.A.P.G. DELEGATES

---

|                |                |             |
|----------------|----------------|-------------|
| Ernie Morrison | Robert Cowdery | Alan DeGood |
| 2008           | 2009           | 2009        |

## BULLETIN STAFF

---

### EDITORS

Sal Mazzullo: Technical Editor  
salvatore.mazzullo@wichita.edu (316) 978-7211

### ADVERTISING

Kent Scribner  
Stelbar Oil Corp. (316) 264-8378

### PROFILES/MEMORIALS

Robert D. Cowdery  
Consultant (316) 267-9030

### EXPLORATION HIGHLIGHTS

John H. Morrison, III  
Independent O&G (316) 263-8281

### STATE SURVEY

Rex Buchanan  
KS Geological Survey (785) 864-3965

### SOCIETY NEWS

KGS Library (316) 265-8676

## K.G.S. LIBRARY

---

PHONE 316-265-8676 FAX 316-265-1013  
email: [frontdesk@kgslibrary.com](mailto:frontdesk@kgslibrary.com) or  
Web: [www.kgslibrary.com](http://www.kgslibrary.com)

### LIBRARY MANAGER

Rebecca Radford 265-8676  
[manager@kgslibrary.com](mailto:manager@kgslibrary.com)

The KGS *Bulletin* is published bi-monthly by the Kansas Geological Society, with offices at 212 North Market, Wichita, Kansas 67202 Copyright 2006, The Kansas Geological Society. The purpose of the *Bulletin* is to keep members informed of the activities of the Society and to encourage the exchange and dissemination of technical information related to the Geological profession. Subscription to the *Bulletin* is by membership in the Kansas Geological Society. Limited permission is hereby given by the KGS to photocopy any material appearing in the *KGS BULLETIN* for the non-commercial purpose of scientific or educational advancement. The KGS, a scientific society, neither adopts nor supports positions of advocacy, we provide this and other forums for the presentation of diverse opinions and positions. Opinions presented in these publications do not reflect official positions of the Society.

# TRILOBITE TESTING INC

Eleven Trucks Serving  
Kansas - Colorado - Texas  
Nebraska - Illinois

Slickline services using the same  
Alpine Electronic Pressure  
Guages as used on DST's

Back pressure testing (G1 & G2)

DST's

**1-800-728-5369**

**FAX: 1-785-625-5620**  
**trilobite @eaglecom.net**

### SHOPS LOCATED IN:

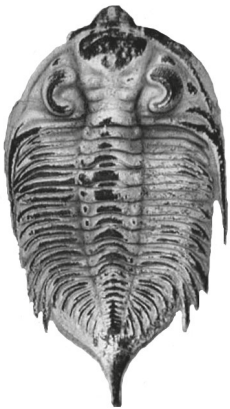
Hays, KS

Scott City, KS

Pratt, KS

Hugoton, KS

Clay City, IL



## ***CAN YOU NAME THE CRITTER?***

**Sponsored by Trilobite Testing, Inc.**

Is your paleo up to date?

If you know the name of the trilobite,  
submit your guess to Wes Hansen at  
316-263-7313 or via e-mail at  
manager@kgslibrary.com

Remember that Trilobite Testing is  
sponsoring your efforts, so be sure to thank  
Paul Simpson the next time that you see him.

***Bulletin committee members and PhD's in  
Paleontology are prohibited from entering.***

## **STOECKINGER COLLECTION**

Bill Stoeckinger is one of the foremost geologists working southeast Kansas and northeast Oklahoma.

He is a pioneer in coalbed methane exploration and development in these areas. Mr. Stoeckinger is retiring and has donated his working files, maps and publications to the Kansas Geological Foundation.

Because this is a unique body of data, the Foundation will keep it together as a collection rather than pulling out logs and integrating them into library files.

Mr. Stoeckinger wishes that his many interpretive maps, based on a considerable amount of work, be made available to geologists active in that area. It will take several weeks to organize the collection so that many geologists can efficiently use it for research.

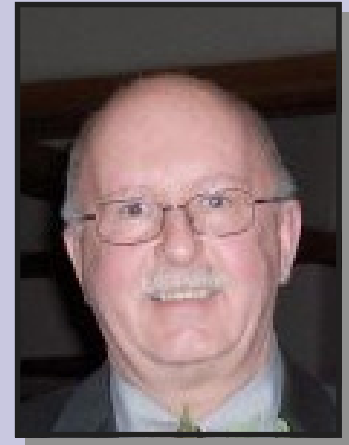
The **STOECKINGER COLLECTION** will be a valuable addition to the resources held by the Foundation and the Society. Both organizations are deeply grateful to Bill Stoeckinger for his generous donation.

# President's Letter

---

Dear Members,

I would like to thank the membership for their confidence in electing me. It is a privilege and honor to serve our membership. An exciting year lies ahead. A few changes have taken place within the board; Lynn Watney is the new Vice President/President-elect; Beth Isern comes in as our new Secretary and Steve Frankamp is our newest Director. Chuck Brewer and Kent Crisler will be my advisors. Please welcome back Rick Saenger as our Treasurer and Robert Stolze and Phil Knighton as Directors. It is my pleasure to work with this talented group.



On Friday January 25, we will hold our annual Kansas Geological Society Banquet. Please join us as we enjoy an evening of food and fun. At this years banquet Don Beauchamp and Debbie FitzGerald will become Honorary Members; this award is well deserved.

As we go into the New Year we have many events to look forward to. Bob Cowdery has already lined up some great talks for the New Year and we can be assured of being entertained, educated and still have points added to our certification.

As the Bob Walters digital library and our ever steady paper library continue to make a profit I look forward to a prosperous and exciting 2008.

*Respectfully submitted,*

Ernie Morrison

# The Kansas Geological Society

Is proud to announce

Walters Digital Library's new software



**Robert F. Walters**

Digital Geological Library

Powered By  
**AnyImage**

©2007 GeoStudio

For Information on Joining....316-265-8676



**MBC**

WELL LOGGING & LEASING

UNMANNED GAS DETECTORS

MUD LOGGING

CERTIFIED INSTRUMENT TECH

SERVING THE KAN-O-TEC AREA

SINCE 1990

AUSTIN GARNER

MARLA GARNER

24—HOUR PHONE (620) 873-2953  
MEADE, KANSAS



**GEOCARE**<sup>SM</sup>

*Benefits*

Security for AAPG Members  
& Their Families  
Through Group Insurance

*Life  
Health  
Dental  
Disability  
And Supplemental Plans*

AAPG's  
GeoCare Benefits Insurance Program  
P. O. Box 9006  
Phoenix, AZ 85068-9006  
**800-337-3140**

E-mail: [geocarebenefits@agia.com](mailto:geocarebenefits@agia.com)  
[www.geocarebenefits.com](http://www.geocarebenefits.com)



# From The Manager

---

Dear Members,

Another year is underway and I would like to take this opportunity to congratulate the newly elected board members and wish Ernie Morrison and his board of directors the best of directing! For me, it is always a delight to work with the board members and to be able to count on them for guidance.

We have introduced the new digital software to the many of the digital members and are glad to be getting feedback from them. We will now be working extra hard to get all of the newly scanned documents integrated into the new digital system and that will include some of the newly released data from Eastern Kansas as well.

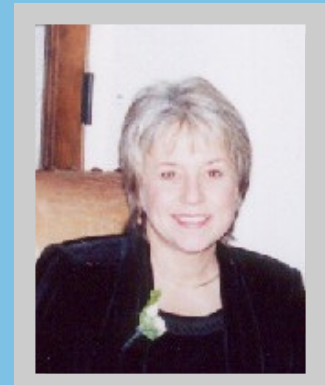
This year the Society is honoring two individuals at our Banquet, Don Beauchamp and Debra FitzGerald. Both have given so very much to this Society & Library and I hope everyone who can, will come to the Banquet to show them our appreciation. The Banquet will be held on the last Friday in January, the 25th at the Petroleum Club. Please see the Honorary Profiles that Bob Cowdery has written on these two outstanding KGS members.

The library remains very busy with orders for paper data, even though the digital library is being used by 165 people now. The girls in the back of the library are also getting the backlog from the KCC copied and into our files and system. It amazes me how much they get done each day and still process all of the orders that are coming in. Many of you who frequent the Library know that Lois Stewart, formerly with the Kansas Geological Survey, has agreed to work part-time for us and she is a welcomed addition to our library family and to our efforts to get data in the files and on-line for your access.

I look forward to 2008 and all of the yearly activities of the Society and hope for another busy year as we all enjoy this "boom" time in the industry. Please remember that if you have any concerns or ideas, I would love to hear from you.

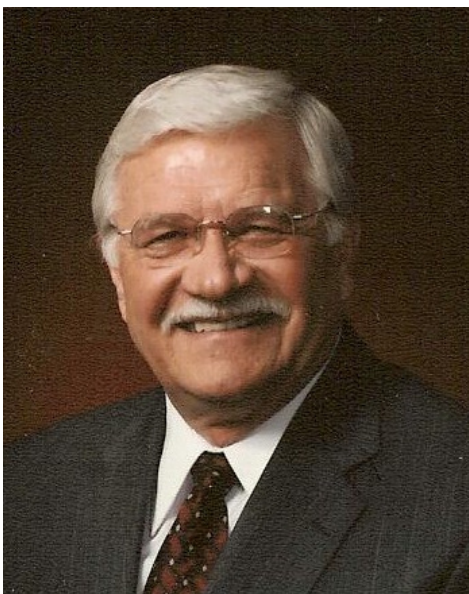
Respectfully submitted,

***Rebecca Radford***  
Manager



## Honorary Member Profile

## *Don Beauchamp*



The Kansas Geological Society is honoring one of its members who since 1966 has been involved in many of the activities of the Society culminating in his election to President in 1985. He has continued to remain active since that time including the Presidency of the Kansas Geological Foundation in 2000. This was the year that the Foundation approved the Walters Digital Library.

Don's story commences in 1936 with his birth in Guide Rock, Nebraska. Don attended grade school and high school in Lindsborg, Kansas graduating in 1954 from Lindsborg High School.

For a period after high school Don worked in construction, but he had been exposed to the "oil patch" working summers in the Lindsborg Pool and made the decision to become a geologist. He enrolled at Wichita University in 1954 and while there took every course that Dr. Calvin Noah taught, and in doing so was well prepared by the time he graduated to work in the oil industry and join his profession. In Dr. Noah's classes they learned how to plot drilling time, spot well locations, make sample logs, contour maps, learn the stratigraphy of road cuts and with that knowledge prepare cross sections, read electric logs etc.

Among Don's classmates at Wichita University were: Jene Darmstetter, Bill Hamm, Byron Hummon, Roger McCoy, Jerry Langrehr, Arden Ratzlaff, Bill Ree and Eldon Schierling. Don was fortunate in obtaining employment while in school with Walters Drilling Company, as a geo-tech. In the summers he worked for the company as a roughneck. When he graduated in 1959, Walters and his partner, Fred James, created a job for him sitting on wells and this furthered his education and prepared him for a great future in the business. That same

year, he married Billy Brown; to that union were born Toni Renee Beauchamp, Jeffrey Scot Beauchamp, and B. Craig Beauchamp.

In 1971 he joined Okmar Oil Company and Beren Corporation as Vice President and Exploration manager and remained with the company for 15 years. This was a period of "boom" in the oil industry and some years the companies drilled as many as 160 wells out of the Wichita office. Don remembers good times at Beren with Douglas Bendell, Charles Spradlin, Max Houston, Tyler Sanders, John James, Judd Hipps, Kent Crisler, Steve Dixon, John Rose, Bill Harrison and others.

Don married Linda S. Bailey in 1976 under a willow tree next to the pond in their yard at the residence near Cheney, Kansas where they still reside. Don and Linda celebrated their 31<sup>st</sup> Wedding Anniversary on July 24, 2007. To that union he has a step-son, Troy D. Bailey and step-daughter, Brenda A. Corey. He also has grandchildren: Sydnee Beauchamp, Jordan Beauchamp, Shane Corey, and Conor Corey.

Don picked a downturn in the business to become an Independent in January 1986, and remained an Independent until 1990. During that period he and his college buddy, Byron Hummon put together a number of drilling deals, particularly in Kansas and Nebraska.

In late 1990 he was offered a position with Pickrell Drilling Company, where in 1993, after Jay McNeil resigned, he became Exploration Manager. At Pickrell he worked with Jay McNeil, Larry Richardson, Bill Romig, Bill Klaver, Kent Crisler, Steve Dillard and Jack Gurley. He resigned from Pickrell in 2000 to join Abercrombie Energy, LLC as Vice-President of Exploration. There he enjoys working with owners Steve Frankamp and Mark Galyon.

Don feels that he has been fortunate to work for some bosses whose names read like a who's who of the oil industry in Kansas: namely Dr. Robert Walters, Robert Beren, Carl Sebitts and Albert Abercrombie.

He has a great record of activity in a number of organizations: Wichita State University Geo Advisory Board, Vice-Chairman; Wichita Petroleum Club, Secretary and First Vice-President; AAPG Delegate to the House of Delegates from the KGS; and SIPES, Most Active Company Committee Chairman.

Don's avocation has been the raising of dogs and their participation in Field Trials. He is currently serving as President of the National Red Setter Field Trial Club and is also the current President of Region 17 Amateur Field Trial Club. In July 2007, Don was inducted into the Kansas Field Trial Hall of Fame. Don was also one of the

top ten in the vote tally this past summer for the National Field Trial Hall of Fame.

He reached seventy one years old this past fall and claims he is going to slow down even though he now owns 3 horses and eleven dogs. It is obvious from his involvement in such a myriad of activities that this is probably not the case.

It was said when his profile was prepared approximately a year ago that his story was not complete and with his receiving this high honor the statement was proven to be true, and the statement that we will hear more about Don in the future is undoubtedly true also.



Nebraska

Kansas

Colorado

# Olsson Associates

- Well Site Supervision
- Geologic Consulting
- Environmental Permitting
- Surveying
- Pipeline Controls Design
- GIS
- Geotechnical Engineering
- Hydrogeology
- Water Resources Engineering
- Water/Wastewater Engineering

Additional Services:

- Municipal Consulting
- Land Development

Jeff Johnson, Ph.D., Geologist - 402.458.5907  
 Clayton Erickson, Geologist - 308.995.8706  
 Dave Weinert, Geologist - 308.995-8706

[www.oaconsulting.com](http://www.oaconsulting.com)

OLSSON ASSOCIATES

## Tucker

WIRELINE SERVICES

*"Setting The New Service Standard"*

### Burt Gowdy

Technical Sales Engineer

Open Hole Wireline Services  
 Servicing KS, OK, TX & AR

2409 South Purdue Drive  
 Oklahoma City, OK 73128  
 Fax: (405) 601-5737  
 Cell: (405) 514-0643  
 24 hr. Dispatch 1-918-645-1091

Email: [Burt.Gowdy@TuckerEnergy.com](mailto:Burt.Gowdy@TuckerEnergy.com)  
<http://www.TuckerWireline.com>

## PARAGON

GEOPHYSICAL SERVICES, INC

~The TOP CHOICE for 3D SEISMIC~

John H Beury III ~ Pres John Aguilar ~ Op. Mgr.

**PHONE (316) 636 - 5552 FAX (316) 636 - 5572**

3500 N. Rock Rd., Bldg 800, Suite B  
 Wichita, KS 67226

[paragon@paragongeo.com](mailto:paragon@paragongeo.com)



Honorary membership needs to be added to the long list of accomplishments of which being the first woman President of the Kansas Geological Society is but one of many.

Debra was born in Wichita to Marilyn (Bonham) Messinger and R.D. "Gus" Messinger. She has three brothers: Frank who lives in Nashville and sells timeshares and develops commercial real estate; Bob, currently a leasebroker in Wichita, and Brad, residing in Kansas City, Plant Manager of a fiberglass manufacturer.

She attended Booth Grade School, Curtis and Coleman Jr. High Schools, and Heights High School. Due in part to the fact that her father was a geologist and she grew up around the "oil patch", she elected to study geology at Wichita State University. Debra graduated from WSU in 1981. Among her classmates were: Sandra Askey, Sherry Heathman, Lynn Gates, Tim Hellman, Steve Frankamp, Steve Davis, Roger Boeken, Tim Pierce, Ted Jochems, Rene Hustead, Danny Dilts, Martha Albright, Bob O'Dell, and Debbie Wilcox. While at WSU, she believes she was fortunate in having some great professors including Dr. John Gries, Dr. Gundersen, Dr. Bob Berg and Dr. Tasch.

In 1981, she married Brian J. FitzGerald. Brian is a musician who has worked for KWCH and KSN, but for the last 25 years has owned FitzGerald Advertising. Debra and Brian have two children: daughter Bevin, who recently returned from Tokyo where she attended classes through an exchange program at WSU and Jack who is a sophomore at the Air Force Academy in Colorado Springs.

Following graduation, Debra worked for F & M Oil Co. and while employed there worked with her father, Gus Messinger, Gene Falkowski, Loren Avis, Ron Schrader, and Phil Askey.

Debra then went to work for Hartman Oil in 1988. After her employment with Hartman she became a Consulting Geologist and continues in that capacity today. In her career, Debra has been influenced most by her Dad and his partner, Gene Falkowski. While she was employed at F & M, she trained under Gene. She found him to be a stickler for checking "dope". He would give her a list of sources that had to be checked at the library for every well on a map and also suggested areas that needed a 36" x 36" island plat. When this was accomplished he would suggest several horizons to contour.

Currently her Dad is her greatest influence and she works with him on generating prospects. There is another segment of geologists who have influenced Debbie and that is the group of geologists that still come downtown and have allowed Debbie to join their "lunch bunch". When this group meets for lunch primarily at the Piccadilly, topics range from the latest production of a new well to a well drilled on Farmer Joe's in 1955 that had a great show in the Mississippi but was plugged. Members of the group are: Gus Messinger, Arden Ratzlaff, Marvin Frankamp, George Mueller, Jay McNeil, Havey Gough, Bill Shepherd, and sometimes Bill Romig and Larry Richardson. They are occasionally joined by a "guest geologist".

Debra in addition to the previously mentioned presidency of the Kansas Geological Society has been involved in a great number of professional activities. She has been Secretary – Treasurer and Vice-President of the KGS and in 2007 was advisor to the Board. In addition she has served on the Membership Committee, Banquet Committee, Technical Program Committee, Chairman of Diamond Anniversary Committee, Library Committee, Distinguished Awards Committee and chaired the Nominating Committee. Her service to the AAPG has included serving on the Core Preservation Committee, Astrogeology Committee and AAPG Mid-Continent Convention Publicity and Sponsors. She recently received the AAPG's Mid-Continent Distinguished Service Award.

She doesn't have any doubt that if she had it to do over she would still be a Petroleum Geologist and for those younger geologists just entering the field she advises them to be "Geoputor", but also recommends that they befriend the older geologists as she has found this group to be excellent mentors.

After surviving Colon Cancer several years ago, she looks forward to continuing her successful career for a long time in the future.

---

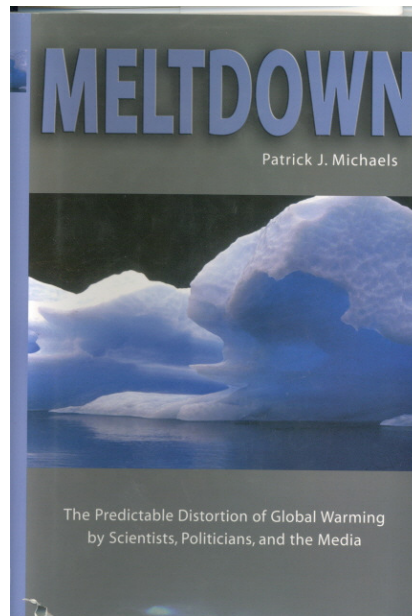
## Book Review by Robert Stolzle

---

### **“Meltdown — The Predictable Distortion of Global Warming by Scientists, Politicians, and the Media.”**

by Patrick J. Michaels

—research professor of environmental sciences at the University of Virginia.



This 271-page book takes to task the current “science” surrounding many of the studies associated with the current frenzy surrounding global warming. The author, a climatologist and professor of some standing, does not dispute the current increase in global temperatures, but he does make the case for natural and often local variation in temperature being the more likely cause than are man’s activities. These limited studies are often extrapolated to cover the entire planet in the effort to “prove” that mankind is going to die of thirst in the desert unless the band-aid of choice is immediately applied to the problem. His understanding of the climate models, and his distrust of them, is as good as I have seen. I would recommend this book on that issue alone.

Some of the author’s dissection of the various studies that have become the canon of the global warming alarmists is interesting, but can be slow reading. However, in the last couple of chapters the author does a great job of dissecting the flawed relationship between government (or industry) funding of current research and the scientific integrity of the researchers performing the studies and this alone is worth the \$24.95 price of the book.

As the author quotes another scientist, “ Established paradigms have lives of their own. The vast majority of scientists, Kuhn notes, do not question them, but rather, spend their time supporting them. As he succinctly states, ‘In science ...novelty emerges only with difficulty, manifested by resistance against a background provided by expectation.’ “

Robert Stolzle

---

# 2008 Kansas Geological Society Board of Directors

---



**Ernie Morrison—President**



**Lynn Watney—President Elect**



**Beth Isern—Secretary**



**Rick Saenger—Treasurer**

## Directors At Large



**Steve Frankamp**



**Robert Stolzle**



**Phil Knighton**

---

# Kansas Geological Society's Annual Banquet

---

*Please Plan To Attend*

*Friday Evening*

*January 25, 2007*

*Petroleum Club of Wichita*

*Social Hour Starts at 5:30 P M*

*Dinner Served at 7:00 P M*

*Awards Ceremony 8:00 P M*

*Please RSVP to the Library*

*316-265-8676*

*Tickets may be purchased in at the door or  
in advance a the KGS Library*

*\$25.00 Per Person*

---

## Altamont Oil Seeps in Labette County, Kansas

Michael Lichtenwalter\* & Collette Burke  
Wichita State University, Dept. of Geology  
\*mblichtenwalter@wichita.edu



Figure 1 – Oil staining in the Upper Amoret Limestone Member exposed in the Labette County Quarry.

algae. The Lake Neosho Shale is a dark gray to black, clay-shale to phosphatic shale that varies from 1-3 meters thick. These rocks contain phosphatic concretions, tiny brachiopods, and fish teeth. The Worland Limestone is a gray, massive, dense, lime wackestone approximately three meters thick, and it contains some brachiopods and fusulinids. The Amoret is very porous, and is overlain by Lake Neosho Shale which acts as an overlying seal. Considering that this stratigraphy continues in the subsurface, the architecture of these units predisposes them to serving as potential reservoirs and seals for hydrocarbon entrapment.

Chaetetids, which are present in Kansas only in Marmaton-age rocks, are classified as demosponges, and the

The Pennsylvanian Altamont Limestone (Desmoinesian, Marmaton Group) locally is a prolific oil producer in central Kansas. Based on geological reports, it appears that reservoirs in the Altamont locally comprise porous reefs and biostromes constructed by the demosponge *Chaetetes*, or a local variation of that, that are associated with very porous carbonate sands. Any geological information pertaining to outcrop study of the Altamont can shed important light on potential reservoir occurrence in the subsurface. The following note is based on my thesis research on the Altamont exposed in southeastern Kansas. It describes a near-surface oil seep in the Altamont that is exposed in a quarry in Labette County (SE/4, Sec. 35, T33S, R18E).

The Altamont is exposed in outcrops, roadcuts and quarries in parts of Montgomery, Labette, Neosho, Bourbon, and Linn Counties in Kansas. It is composed of three members -- in ascending stratigraphic order: the Amoret Limestone, Lake Neosho Shale, and Worland Limestone. The Amoret Limestone generally is a light-gray, massive, lime wackestone to rudstone approximately 3 meters thick, and it contains abundant chaetetid colonies and phylloid

secreted carbonate skeletons that strongly resemble those of corals. In Labette County, chaetetids constructed reefs and bioherms on the Cherokee Platform, which during the Middle Pennsylvanian was an area of relatively active tectonic subsidence (Voegeli, 1992). There are bounding structural highs in all directions -- the Bourbon Arch to the north, the Shelf Edge Rise to the south, the Nemaha Ridge to the west, and the Ozark Uplift to the east, which allowed for maximum chaetetid development in this area. Based on measured sections and lithologic analysis of chaetetid-bearing limestones in the Amoret, it appears that they lived in shallow tropical seas of moderate to high energy and normal-marine salinity conditions.

Among other exposures, the chaetetid-bearing Amoret Limestone is present in Labette County Quarry. It is approximately two meters thick, and prior to quarry excavation it was approximately five meters below surface. As elsewhere, this unit is bounded by a disconformity at the top and stylolites at the base. This unit seeps oil from porous chaetetids and surrounding matrix in the quarry (Figure 1). The chaetetid colonies are mostly saturated with dark brown to black live (but somewhat asphaltic) oil



that has a decent odor. The surrounding porous limestone matrix is a carbonate skeletal sand with spotty oil staining. The presence of this oil seep indicates past migration into this immediate area and stratigraphic unit. This occurrence of oil-staining chaetetid limestones therefore mimics those in some subsurface reservoirs in central and western Kansas.



Figure 2 – Oil stained chaetetid colony showing good saturation. Rock hammer is approximately 30 cm tall for scale.

#### REFERENCES

Voegeli, V.J., 1992, Paleocology of chaetetids in the Amoret Limestone Member (Desmoinesian) in southeast Kansas: Unpublished M.S. thesis, Kansas State University, 287 p.

## ADVERTISER'S DIRECTORY

|                                   | <i>page</i> |
|-----------------------------------|-------------|
| Abercrombie RTD, Inc              | 18          |
| Allied Cementing Company, Inc     | 18          |
| Duke Drilling                     | 18          |
| GeoCare Services AAPG             | 8           |
| Kansas Geological Foundation      | 23          |
| Lockhart Geophysical              | 18          |
| LogSleuth                         | 25          |
| MBC                               | 8           |
| Murfin Drilling Company, Inc      | 18          |
| Olsson Associates                 | 11          |
| PARAGON Geophysical Services, Inc | 11          |
| Petrobase                         | 18          |
| Professional Directory            | 19          |
| Sunrise Oilfield Supply           | 18          |
| TGS-NOPEC Geophysical Company     | 2           |
| Trilobite Testing                 | 6           |
| Tucker Wireline Services          | 11          |
| Walters Digital Library           | 8           |
| Weatherford                       | 27          |

## ADVERTISER'S RATES: 2006

|  | <b>B&amp;W</b> | <b>Color</b> |
|--|----------------|--------------|
| <b>Full Page</b>                       |                |              |
| 6 issues                               | \$2,000        | \$2,500      |
| 3 issues                               | \$1,080        | \$1,325      |
| 1 issue                                | \$480          | \$525        |
| <b>1/2 Page</b>                        |                |              |
| 6 issues                               | \$1,000        | \$1,500      |
| 3 issues                               | \$540          | \$825        |
| 1 issue                                | \$225          | \$350        |
| <b>1/4 Page</b>                        |                |              |
| 6 issues                               | \$600          | \$900        |
| 3 issues                               | \$325          | \$525        |
| 1 issue                                | \$150          | \$250        |
| <b>1/8 Page</b>                        |                |              |
| 6 issues                               | \$300          | \$500        |
| 3 issues                               | \$175          | \$325        |
| 1 issue                                | \$75           | \$185        |
| <b>Professional Ad (Business Card)</b> |                |              |
| 6 issues                               | \$90           | \$180        |

*Note: Full page, 1/2 page and 1/4 page ads receive an ad space in the KGS Directory at no additional charge.*

WESTERN KANSAS  
SOUTHERN NEBRASKA



EASTERN COLORADO  
OKLAHOMA & TEXAS PANHANDLES

**10 Drilling Rigs**

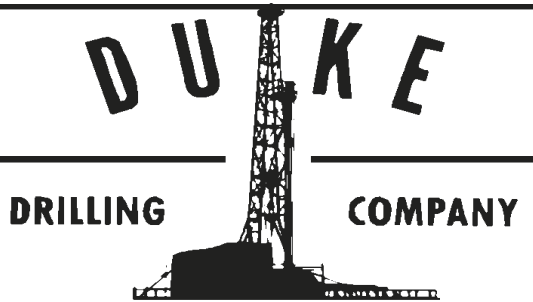
For contract information, please contact:  
Blaine Miller / Drilling Department  
316-858-8607 (Direct) or 316-267-3241

250 N. Water #300—Wichita, KS 67202

**10 Well Service Rigs &  
Roustabout Services**

For contract information, please contact:  
Alan Hays, Well Service Sprvsr.  
785-421-2103 or 785-567-8739 (cell)

East Highway 24—Hill City, KS 67642



**ROTARY DRILLING CONTRACTOR**

620 Hubbard PO Box 823  
Great Bend, KS 67530  
Phone 620-793-8366

100 S. Main, Ste. 410,  
Wichita, KS 67202  
Phone 316-267-1331  
Fax 316-267-5180

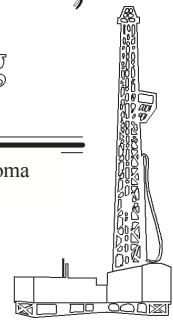
**ABERCROMBIE RTD, INC.**

Rotary Drilling  
Contractor

Operating 4 Rigs in Western Kansas & NW Oklahoma

150 N. MAIN SUITE 801  
WICHITA, KANSAS 67202-1383

**(316) 262-1841**



Great Bend (620) 793-5861    Ness City (785) 798-3843    Medicine Lodge (620) 886-5926



Acidizing Available at Medicine Lodge District

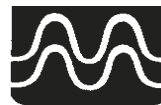
Russell  
(785) 483-2627

Oakley  
(785) 672-3452

**Lockhart Geophysical Company**

Call (303) 592-5220 FAX (303) 592-5225  
Or E-mail lockden@xpert.net

**2D & 3D Seismic Acquisition**  
Vibroseis Specialists



**JAPEX GDAPS-4** Distributed  
System

*We'll give you seismic excellence*

**PETROBASE**

**The Digital Database for Western Kansas**

High Quality Data Your Software Can Use  
Includes All Central and Western Counties  
All Wells — Dating from the 1800's

*The Most Complete and Extensively Edited Data Available*  
Headers • Tops • Dsts • Perfs and Other Unique Features  
Geologically Selected Formation Tops-Consistent Stratigraphic Nomenclature  
Accurate Latitudes-Longitudes Tied to Digital Land Grids

Robert D. Dougherty, Geologist    Phone (620)793-9055  
P.O. Box 1065    Great Bend, Kansas 67530

or call WhiteStar Corporation in Denver - (303) 781-5182



STORES

Ness City, KS  
800-589-5733

El Dorado, KS  
316-321-9323

Garden City, KS  
877-976-1700

Spivey, KS  
316-532-5261

McCook, NE  
308-345-1542

**FULL LINE SUPPLY STORE**

With Pump Shop  
Offering New & Used  
Pipe, Equip. & Fittings  
Employee Owned

SALES OFFICES

Wichita, KS  
800-777-7672

Great Bend, KS  
316-792-3130  
Mob: 316-786-4255

**New Office**  
Hugoton, KS  
620-428-6604

# PROFESSIONAL DIRECTORY

**Kirk Rundle**  
**Consulting Geophysicist**

3D Seismic Design, Acquisition to Processing QC.,  
Interpretation and Analysis, Subsurface Integration  
7340 W. 21st. N., Ste. 100  
Wichita, Kansas 67205

Office: 316-721-1421 Fax: 316-721-1843  
Home: 316-721-8962 Email:krundle@swbell.net

**DON V. RIDER**  
**Consulting Petroleum Geologist**  
Well Site Supervision  
Geological Studies  
Completions

8910 W. Central Park Ct.  
Wichita, KS 67205

Office PH: 316-729-4445 Cell PH: 316-706-7199

Tel.: (972) 712-9036  
Fax: (972) 712-0258  
Cell: (214) 223-1784

**LANG J. FUQUA**  
**Certified Petroleum Geologist**

4201 Tanglewood Ln.  
Frisco, Texas 75035

**WESLEY D. HANSEN**  
**Consulting Geologist**

Well site Supervision  
Geologic Studies  
212 N. Market, Ste 257  
Wichita, Kansas 67202  
Off: (316) 263-7313  
Mobile: (316) 772-6188



**KEVIN L. KESSLER**

INDEPENDENT/CONSULTING PETROLEUM GEOLOGIST

WELLSITE SUPERVISION • GEOLOGIC RESEARCH  
OIL & GAS PROSPECTS  
KANSAS & EASTERN COLORADO

MAILING ADDRESS PHONE  
1199 N. PONDEROSA RD. RES.: (316) 522-7338  
BELLE PLAINE, KS 67013 MOBILE: (316) 706-6636  
EMAIL: KKESSLER1199@AOL.COM

**KGJ ENTERPRISES**

Contract Oil & Gas Accounting &  
Office Management

Kathryn G. James, MBA (316) 775-0954  
4278 SW 100th ST. (316) 250-5989  
Augusta, KS 67010 kgjames@onemain.com

**ROGER L. MARTIN**

Independent/Consultant  
Petroleum Geologist

200 East First Street, Ste. 405  
Wichita, Kansas 67202

Office 620-438-2000 Cell: 316-250-6970

Field Cell: 316-655-1227

Email: rogermartingeo@yahoo.com

**ALFRED JAMES III**

Petroleum Geologist  
Kansas - Colorado - Alaska

SIPES #1111

Wichita, Kansas 67202

Off: (316) 267-7592

**M. Bradford Rine**

Honorary Life Member—Kansas Geological Society

Licensed Geologist—KS. #204  
Registered Professional Geologist—Wyo. # 189  
Certified Geologist—A.A.P.G. # 2647  
S.I.P.E.S. # 1584 S.P.E. #109833-4

PROSPECT EVALUATION • PROSPECT GENERATION  
WELL SITE SUPERVISION • EXPERT TESTIMONY • OPERATIONS  
PROPERTY EVALUATION • RESERVOIR STUDIES  
DRLG./COMP. CONSULTATION

Suite 415  
100 S. Main  
Wichita, KS 67202

Office: (316) 262-5418  
Fax: (316) 264-1328  
Cell: (316) 772-6829



Paul Gunzelman  
President/Geologist

Wichita, Kansas 316.634.6026

email p.gun@sbcglobal.net

**ROBERT J. GUTRU**

**Geologist**

300 Farmers & Bankers Bldg.  
200 East First Street  
Wichita, Kansas 67202  
Off: (316) 265-3402

**MELLAND ENGINEERING**

Petroleum Engineering & Geological Consulting

**James E. Melland, P.E.**

Owner

Office: (620) 241-4621 Fax: (620) 241-2621

Cell Phone: (661) 319-5950

Email: jemelland@sbcglobal.net

Jamesm@mellandengineering.com

P.O. Box 841, McPherson, KS 67460



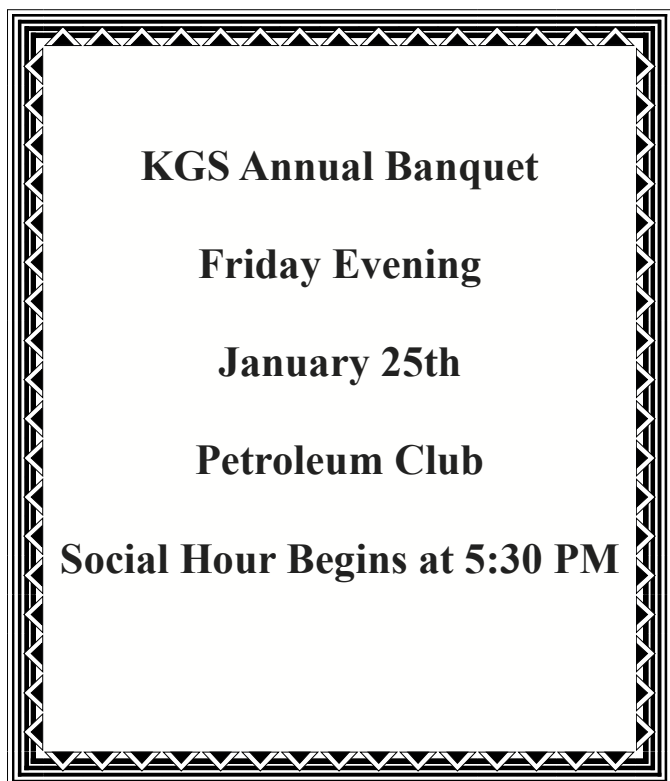
## **Card Set For Sale**

*In 6 File Cabinets  
Up to date into mid-late 90's*

*Price is Negotiable*

*Contact:*

*Leland Young  
Little River, KS  
620-897-6601*



## **KGS Annual Banquet**

**Friday Evening**

**January 25th**

**Petroleum Club**

**Social Hour Begins at 5:30 PM**



## **Help Wanted! Integration Project**

**If you have any time you could give to the Library, we have projects that could move a little faster with some Expert Professional Geologists**

**Just a few hours a week would make such a difference.**

*To volunteer, please contact Ted Jochems  
or Rebecca at the Library  
265-8676*



## **THE ON-LINE BULLETIN IS NOW IN PDF FORMAT**

Check out the complete KGS Bulletin on our web site  
[www.kgslibrary.com](http://www.kgslibrary.com)

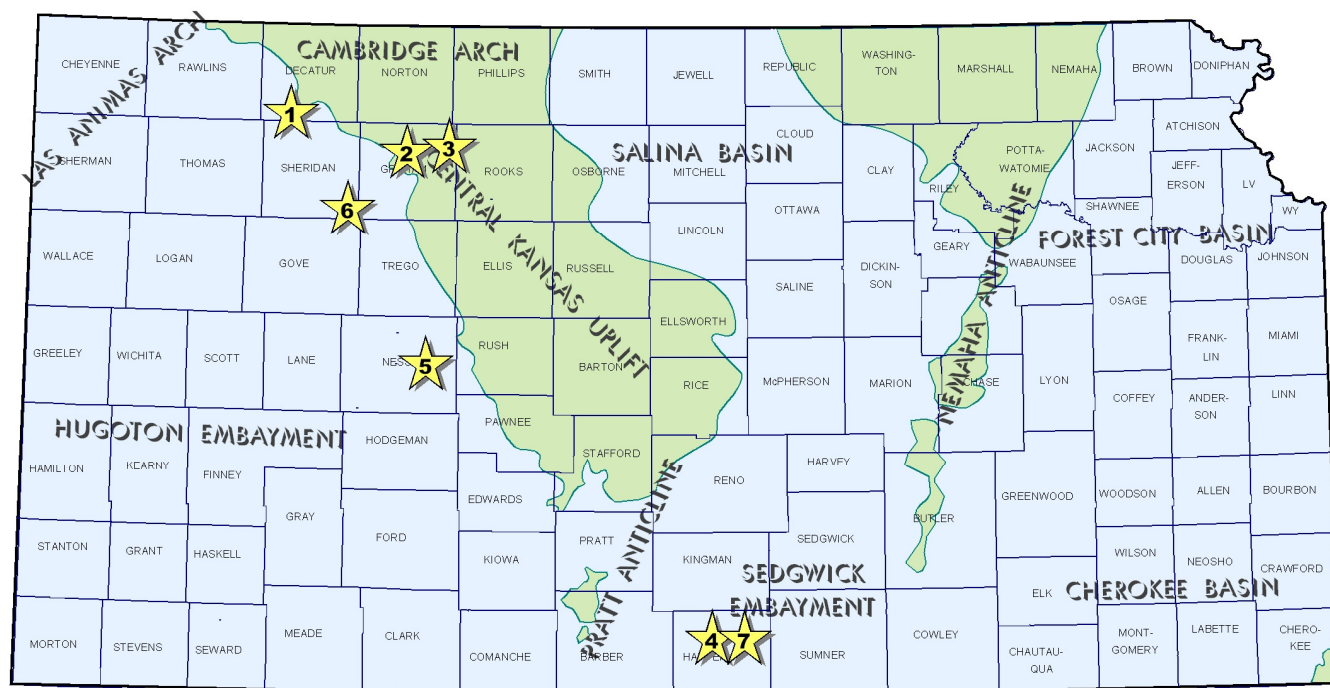
A simple way to help your Society save money would be to let us know if you like viewing the Bulletin on line. This would allow us to reduce our mailing & printing costs of sending the Bulletin to every member.

We are glad to keep mailing it to you but if you are satisfied with reading on-line, please just let us know.

**316-265-8676**

# Exploration Highlights

By John H. Morrison, III  
Independent Oil & Gas Service



1. Murfin Drilling Company has discovered Lansing-Kansas City oil deposits at their Mumm Brothers #1-26, located in the NW/4 of section 26-T5s- R29W, about seven and one-quarter miles southwest of Dresden, Kansas. The Decatur County wildcat well was drilled to a total depth of 4220 ft. in August and completed at an undisclosed production rate in October '07. The new unnamed pool was found nearly two and one-quarter miles southeast of similar production in the Prairie Dog Creek East oil field.

2. Nearly three-quarters mile southwest of known oil production in the Mount Edna Northwest Field, independent producer H & C Oil Operating, Inc. has discovered new oil reserves in the Lansing-Kansas City formation at the Morris Trust #9-1. The 3944 ft. deep well was completed for an undisclosed potential on October 1, 2007. Well site is located in the NW/4 of section 9- T7s- R23W, Graham County, approximately six and one-half miles northwest of Hill City, Kansas. The new field has not been named.

3. Lansing-Kansas City oil deposits have been discovered over one-half mile southwest of established oil production in the McFarland South

Field by Clipper Energy LLC. The 3770 ft. deep stepout and wildcat test, Cory #1, was placed on the pump in October at an undisclosed rate of production. Site is located in the NE/4 of section 8- T7s- R21W in Graham, about five miles north and three and one-quarter miles west of the town of Nicodemus, Kansas. Warren Drilling served as rotary contractor.

In other news, Clipper Energy LLC has established a new unnamed oil field in the SE/4 of section 28-T7s- R21W with the successful completion of their Berland #2. The Graham County wildcat well started producing oil from perforated Lansing-Kansas City formation on October 25, 2007. Warren Drilling was contracted to bottom the well at a total depth of 3700 ft. The new reserves were found at site located three-quarter miles west of the Nicodemus West oil field, which was discovered by Clippers predecessor, Great Eastern Energy & Development, in 2003. The new unnamed field lies one mile north and two miles west of Nicodemus, Kansas.

4. American Warrior, Inc. has discovered Mississippian oil and gas reserves nearly three-quarters mile northeast of the Crystal Springs Field which is located four miles

southwest of Harper, Kansas. The Burkholder #1-28, spotted in the NW/4 of section 28- T32s- R7W, started producing at an undisclosed rate on October 10, 2007. The Harper County infield wildcat well was drilled to a total depth of 4900 ft. by Duke Drilling tools. James F. Dilts served as wellsite geologist.

5. A new Mississippian oil field has been established in Ness County with the completion of the #1-36 Foes by Grand Mesa Operating Company. Located in the NE/4 of section 36- T18s- R22W, about one-half mile west of the Bazine, Kansas city limits, the well is on pump making an unknown amount of crude as of October 15, 2007. WW Drilling, LLC was contractor and drilled the well to a total depth of 4450 ft. The new field has not been named.

6. Lansing-Kansas City oil has been discovered by Ritchie Exploration, Inc. at the #1 Werth 15-B in Sheridan County. Spotted in the NW/4 of section 15- T10s- R26W, the unnamed pool opener was placed on pump on September 25, 2007 at an undisclosed rate. The 4110 ft. deep well was drilled nearly three-quarters mile northeast of the Fuller South Field, which has also produced LKC oil since 1981. The new field lies eight miles northeast of the town of Quinter, Kansas.

7. American Warrior, Inc. has discovered Mississippian oil and gas reserves nearly three-quarters mile northeast of the Crystal Springs Field in Harper County. The Burkholder #1-28, spotted in the NW/4 of section 28- T32s- R7W, started producing at an undisclosed rate on October 10, 2007. The well infield wildcat well was drilled to a total depth of 4900 ft. by Duke Drilling tools. James F. Dilts served as wellsite geologist. Field area is located four miles southwest of Harper, Kansas.



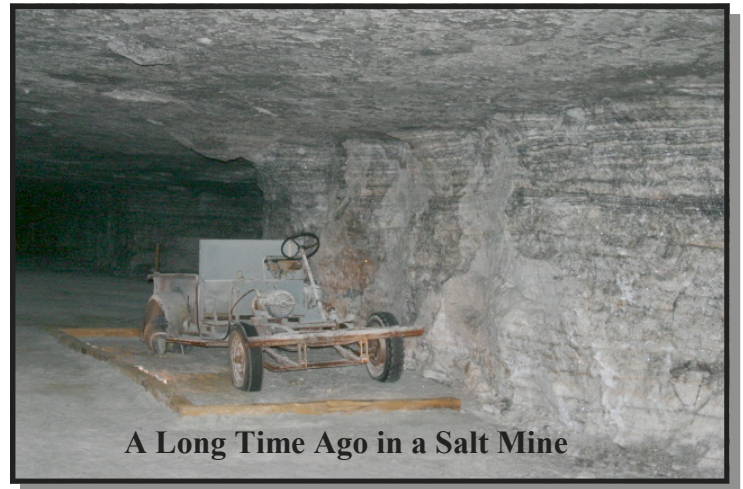
**Robert F. Walters**  
Digital Geological Library  
Powered By  
**AnyImage**  
©2007 GeoStudio

***INTERESTED IN  
BUYING CARD SETS, CABINETS, ETC.??***

*Larry Friend and Ted Jochems invite you to  
submit your e-mail address to an  
automatic notification list when such things  
come up for sale.*

**Contact: KGS Library**

**265-8676**



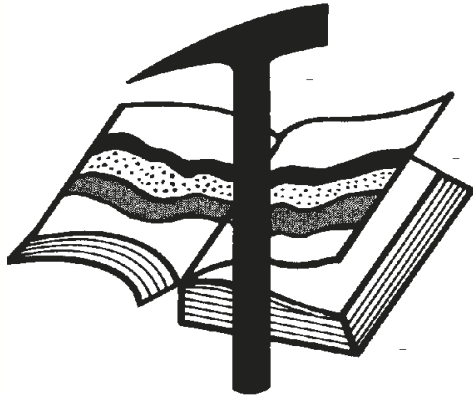
**A Long Time Ago in a Salt Mine**

**Mark your calendars!!**

**KGS Annual Banquet & Awards**

**Friday**

**January 25, 2008  
At the Petroleum Club**



# Kansas Geological Foundation

Web Site: [www.kgfoundation.org](http://www.kgfoundation.org)

**212 North Market  
Wichita, Kansas 67202**

A not-for-profit educational and scientific corporation

## **GOALS:**

- promote geology and earth science
- preserve geological records
- establish memorials and endowments
- support field trips and seminars
- financial aid and grants to students

**PLEASE HELP SUPPORT THE FOUNDATION**

## **Kansas Geological Foundation Services**

The Kansas Geological Foundation provides the following services as a part of the organization's commitment to educate the public regarding earth science.

### **Speaker's Bureau**

A list of speakers available to talk about various aspects of geology may be obtained by contacting Janice Bright at the KGS Library, 265-8676. This service is free to the public.

### **DVD/Videotape Library**

The KGF maintains a DVD & videotape library focused primarily on the various fields of earth science. These tapes may be checked out without charge by the public. To obtain a list of tapes, please contact the KGS Library, 212 N. Market, Ste. 100, Wichita, KS 67202, or call Janice Bright at 265-8676.

The Kansas Geological Foundation was founded in March, 1989 as a not-for-profit corporation under the guidelines of section 501(c)(3) of the tax code to provide individuals and corporations the opportunity to further the science of geology. It is dedicated to providing charitable, scientific, literary and educational opportunities in the field of geology for the professional geologist as well as the general public.

KGF can receive in-kind donations through which the donor may receive a tax deduction. Of equal importance, the KGF provides the financial resources to sort, process and file this data at the KGS library. If you have a donation to make, please contact the KGF at 265-8676.

Your tax-deductible membership donation helps to defray the cost of processing donations and to support public education programs about the science of geology. Annual membership begins at \$50.00 per year. Donations of \$100.00 or more are encouraged through the following clubs:

|                         |                  |
|-------------------------|------------------|
| <b>Century Club</b>     | \$ 100 to \$ 499 |
| <b>\$500 Club</b>       | \$ 500 to \$ 999 |
| <b>Millennium Club</b>  | \$1000 to \$5000 |
| <b>President's Club</b> | \$5000 and over  |

# Salt Mine — Hutchinson, Kansas AAPG Mid-Continent Field Trip

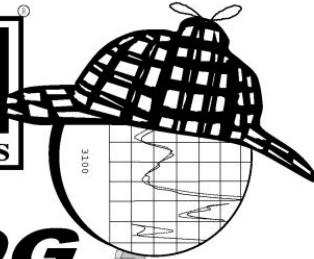
Photos Courtesy of David Hale, Wichita Falls, Texas



**Fluid Inclusion**







**LOG**  
**Sleuth**  
**2000**  
**AND RASTER IMAGE**  
**WELL LOGS**

**OVER**  
**5 MILLION**  
**LOGS**  
**AVAILABLE**

**1-800-310-6451**

**SALES@MJLOGS.COM**

**CALGARY • DENVER**

**U.S.A.**  
**LOGS FOR:**

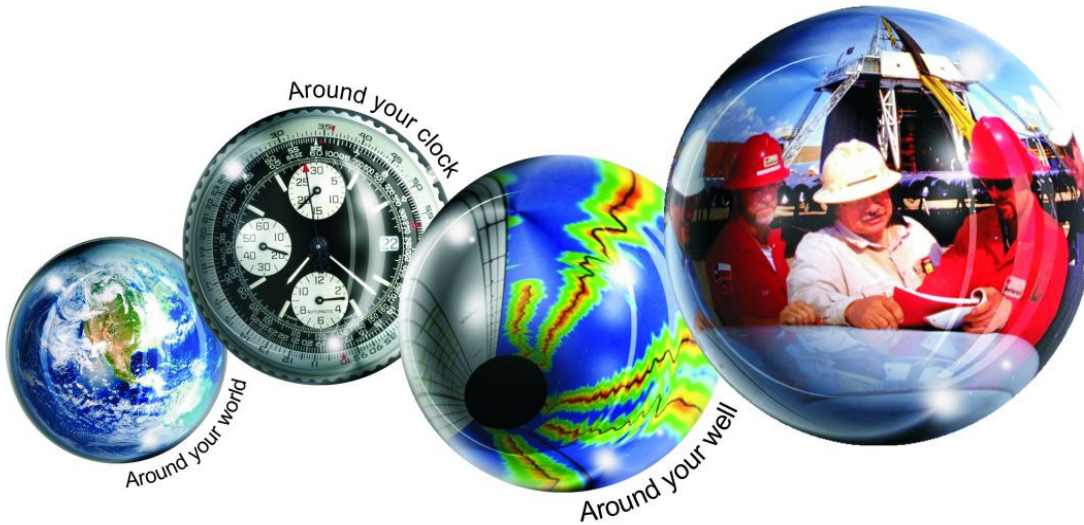
**ALABAMA**  
**ALASKA**  
**ARKANSAS**  
**ARIZONA**  
**CALIFORNIA**  
**COLORADO**  
**FLORIDA**  
**IDAHO**  
**ILLINOIS**  
**INDIANA**  
**KANSAS**  
**LOUISIANA**  
**MICHIGAN**  
**MISSOURI**  
**MISSISSIPPI**  
**MONTANA**  
**NEBRASKA**  
**NEVADA**  
**NEW MEXICO**  
**NORTH DAKOTA**  
**OKLAHOMA**  
**OREGON**  
**SOUTH DAKOTA**  
**TEXAS**  
**UTAH**  
**WASHINGTON**  
**WEST VIRGINIA**  
**WYOMING**

**CANADIAN**  
**LOGS FOR:**

**ALBERTA**  
**BRITISH COLUMBIA**  
**SASKATCHEWAN**  
**MANITOBA**  
**FEDERAL AREAS**

# Kansas Geological Foundation Memorials

| KGS<br>Member           | Date<br>Deceased | Memorial<br>Established | KGS<br>Member              | Date<br>Deceased | Memorial<br>Established |
|-------------------------|------------------|-------------------------|----------------------------|------------------|-------------------------|
| Dan Bowles              | 09/89            | 1990                    | Warren E. Tomlinson        | 01/00            | 2000                    |
| John Brewer             | 10/89            | 1990                    | James A. Morris            | 01/00            | 2000                    |
| George Bruce            | 08/89            | 1990                    | Eric H. Jager              | 03/00            | 2000                    |
| Robert Gebhart          | 01/90            | 1990                    | Kenneth W. Johnson         | 03/00            | 2000                    |
| Ray Anderson, Jr.       | 11/90            | 1990                    | Dean C. Schaake            | 03/00            | 2000                    |
| Harold McNeil           | 03/91            | 1991                    | Fred S. Lillibridge        | 05/00            | 2000                    |
| Millard W. Smith        | 08/91            | 1991                    | Jerry A. Langrehr          | 07/00            | 2000                    |
| Clinton Engstrand       | 09/91            | 1991                    | Clark A. Roach             | 07/00            | 2000                    |
| M.F. "Ted" Bear         | 10/91            | 1991                    | Floyd W. "Bud" Mallonee    | 10/00            | 2000                    |
| James & Kathryn Gould   | 11/91            | 1991                    | Ralph W. Ruuwe             | 09/00            | 2000                    |
| E. Gail Carpenter       | 06/91            | 1993                    | Robert L. Slamal           | 02/01            | 2001                    |
| Benton Brooks           | 09/92            | 1992                    | Jerold E. Jespersion       | 06/01            | 2001                    |
| Robert C. Armstrong     | 01/93            | 1993                    | William A. Sladek          | 06/01            | 2001                    |
| Nancy Lorenz            | 02/93            | 1993                    | Harlan B. Dixon            | 06/01            | 2001                    |
| Norman R. Stewart       | 07/93            | 1993                    | Edward B. Donnelly         | 08/01            | 2001                    |
| Robert W. Watchous      | 12/93            | 1993                    | Richard P. Nixon           | 02/02            | 2002                    |
| J. George Klein         | 07/94            | 1994                    | Robert W. Frensley         | 12/01            | 2002                    |
| Harold C.J. Terhune     | 01/95            | 1995                    | Gerald W. Zorger           | 01/02            | 2002                    |
| Carl Todd               | 01/95            | 1995                    | Don L. Calvin              | 03/02            | 2002                    |
| Don R. Pate             | 03/95            | 1995                    | Claud Sheats               | 02/02            | 2002                    |
| R. James Gear           | 05/95            | 1995                    | Merle Britting             | 2002             | 2002                    |
| Vernon Hess             | 06/95            | 1995                    | Harold Trapp               | 11/02            | 2002                    |
| E. K. Edmiston          | 06/95            | 1995                    | Donald M. Brown            | 11/02            | 2003                    |
| Jack Rine               | 07/95            | 1995                    | Elwyn Nagel                | 03/03            | 2003                    |
| Lee Cornell             | 08/95            | 1995                    | Robert Noll                | 09/03            | 2003                    |
| John Graves             | 10/95            | 1995                    | Benny Singleton            | 09/03            | 2003                    |
| Wilson Rains            | 10/95            | 1995                    | Jay Dirks                  | 2003             | 2003                    |
| Heber Beardmore, Jr.    | 09/96            | 1996                    | J. Mark Richardson         | 02/04            | 2004                    |
| Elmer "Lucky" Opfer     | 12/96            | 1996                    | John "Jack" Barwick        | 02/01            | 2004                    |
| Raymond M. Goodin       | 01/97            | 1997                    | Richard Roby               | 03/04            | 2004                    |
| Donald F. Moore         | 10/92            | 1997                    | Ruth Bell Steinberg        | 2004             | 2004                    |
| Gerald J. Kathol        | 03/97            | 1997                    | Gordon Keen                | 03/04            | 2004                    |
| James D. Davies         | 08/88            | 1997                    | Lloyd Tarrant              | 05/04            | 2004                    |
| R. Kenneth Smith        | 04/97            | 1997                    | Robert J. "Rob" Dietterich | 08/96            | 2004                    |
| Robert L. Dilts         | 05/97            | 1997                    | Mervyn Mace                | 12/04            | 2004                    |
| Delmer L. Powers        | 06/72            | 1997                    | Donald Hoy Smith           | 04/05            | 2005                    |
| Gene Falkowski          | 11/97            | 1997                    | Richard M. Foley           | 06/05            | 2005                    |
| Arthur (Bill) Jacques   | 01/98            | 1998                    | Wayne Brinegar             | 06/05            | 2005                    |
| Bus Woods               | 01/98            | 1998                    | Jack Heathman              | 05/06            | 2006                    |
| Frank M. Brooks         | 03/98            | 1998                    | Charles Kaiser             | 09/06            | 2006                    |
| Robert F. Walters       | 04/98            | 1998                    | Rod Sweetman               | 08/06            | 2006                    |
| Stephen Powell          | 04/98            | 1998                    | Karl Becker                | 10/06            | 2006                    |
| Deane Jirrels           | 05/98            | 1998                    | Frank Hamlin               | 10/06            | 2006                    |
| William G. Iversen      | 07/98            | 1998                    | Marvin Douglas             | 12/06            | 2006                    |
| Ann E. Watchous         | 08/98            | 1998                    | Robert W. Hammond          | 04/07            | 2007                    |
| W.R. "Bill" Murfin      | 09/98            | 1998                    | Eldon Frazey               | 04/07            | 2007                    |
| Donald L. Hellar        | 11/98            | 1998                    | Pete Amstutz               | 05/07            | 2007                    |
| Joseph E. Rakaskas      | 01/99            | 1999                    | Charles Spradlin           | 05/07            | 2007                    |
| Charles W. Steincamp    | 02/99            | 1999                    | Robert "Bob" Douglass      | 09/07            | 2007                    |
| Robert and Betty Glover | 10/96            | 1998                    |                            |                  |                         |
| Howard E. Schwerdtfeger | 11/98            | 1999                    |                            |                  |                         |
| W. W. "Brick" Wakefield | 03/99            | 1999                    |                            |                  |                         |
| V. Richard Hoover       | 01/00            | 2000                    |                            |                  |                         |



## All Around You

**Weatherford has always been driven by your needs.**

Now, with the addition of Precision Energy Services we're continuing to build a world of skills, services and technologies that revolve – and evolve – around you.

### The result?

An expanded global network of 25,000 people, 730 service bases and 87 manufacturing facilities in 100 countries.

This increased local knowledge and service is there to support you anywhere, anytime. From midday in the Middle East to midnight in the middle of nowhere.

And with greatly strengthened capabilities in the critical evaluation skills of directional drilling and wireline logging, we can do even more to improve the profitability and productivity of your wells.

To see how our sphere of services can work for you, visit [www.weatherford.com](http://www.weatherford.com) or contact either your Weatherford or former Precision Energy Services representative.

Drilling | Evaluation | Completion | Production | Intervention

© 2006 Weatherford International Ltd. All rights reserved. Incorporates proprietary and patented Weatherford technology.

**Kansas Geological Society & Library**  
**212 North Market, Suite 100**  
**Wichita, Kansas 67202**

|  |
|--|
| PRSRT STD<br>US POSTAGE<br>PAID<br>WICHITA KS<br>PERMIT NO 923 |
|--|

**KGS BULLETIN**  
**January—February 2008**

# January 2008

| SUN | MON                                     | TUE                        | WED | THU | FRI                      | SAT |
|-----|---|----------------------------|-----|-----|--------------------------|-----|
|     | <b>New Years Eve<br/>Library Closed</b> | 1<br><b>Library Closed</b> | 2   | 3   | 4                        | 5   |
| 6   | 7                                       | 8<br>KGS Board             | 9   | 10  | 11                       | 12  |
| 13  | 14                                      | 15<br>Tech Talk            | 16  | 17  | 18                       | 19  |
| 20  | 21                                      | 22<br>Tech Talk            | 23  | 24  | 25<br><b>KGS Banquet</b> | 26  |
| 27  | 28                                      | 29<br>Tech Talk            | 30  | 31  |                          |     |

# February 2008

| SUN | MON             | TUE             | WED | THU | FRI             | SAT |
|-----|-----------------|-----------------|-----|-----|-----------------|-----|
|     |                 |                 |     |     | 1               | 2   |
| 3   | 4               | 5               | 6   | 7   | 8               | 9   |
| 10  | 11<br>Tech Talk | 12<br>KGS Board | 13  | 14  | 15              | 16  |
| 17  | 18              | 19<br>Tech Talk | 20  | 21  | 22              | 23  |
| 24  | 25              | 26<br>Tech Talk | 27  | 28  | 29<br>Leap Year |     |