



Established 1925

KANSAS GEOLOGICAL SOCIETY

BULLETIN

Volume 89 Number 4

July—August 2014

IN THIS ISSUE

It's Picnic Time

*Memorial:
Don Slawson*



Robert F. Walters Digital Library

The most complete source for Kansas data

Day or Night
You can get to the data as you need it

www.kgslibrary.com

To Join: call 316-265-8676

The screenshot displays the Robert F. Walters Digital Geological Library website. The main content area features a table of well records with columns for Well No., Spot, Location, H.S., E.W., Spud, Completion, Depth, E.L.B., E.L.P., E.L.G., and Status. The table lists several wells in Comanche County, Kansas, including well 10-215-16W.

Well No.	Spot	Location	H.S.	E.W.	Spud	Completion	Depth	E.L.B.	E.L.P.	E.L.G.	Status
10-215-16W	230	FEEL	3200	PSL	1980	FEL	12/01/1987	5100	3004		
1	440	FEEL	440	PSL	1320	FEL	12/05/1960	4990	2083		
1	2310	FEEL	2310	PSL	1320	FEL	12/03/1964	5025	2052		
1	1320	FEEL	1320	PSL	1320	FEL	06/01/1964	4950	2037		
1	1320	FEEL	1320	PSL	1960	FEL	07/03/1963	5465	2040		
1	4290	FEEL	4290	PSL	2070	FEL	10/27/1963	4930	2006		

Below the table, there are several preview windows. One shows a 'Completion Card - IOG' for well 10-215-16W, listing details like 'Contr. PICKRELL', 'Tops', and 'Drill Stem Test'. Another preview shows a 'Well Log' for well 10-215-16W, including a 'LATEROLOG SURVEY' section with various data points and a 'K.G.S. LIBRARY' stamp.

Table of Contents

Features

Memorial.....25

Departments & Columns:

KGS Tech Talks4
President's Letter7
Advertiser's Directory8
From the Manager..... 9
KGS Board Minutes10
Professional Directory19 & 20
Exploration Highlights24 & 25
Kansas Geological Foundation Memorials.....26

ON THE COVER:

Photo taken at a past KGS Picnic. Get ready for another fun evening at All Star Sports West. Bring the kids and grandkids out for some summer fun & games!

CALL FOR PAPERS

The Kansas Geological Society Bulletin, which is published bimonthly both in hard-copy and electronic format, seeks short papers dealing with any aspect of Kansas geology, including petroleum geology, studies of producing oil or gas fields, and outcrop or conceptual studies. Maximum printed length of papers is 5 pages as they appear in the Bulletin, including text, references, figures and/or tables, and figure/table captions. Inquiries regarding manuscripts should be sent to Rebecca Radford, manager@kgslibrary.com or mailed to 212 N. Market, Ste. 100, Wichita, KS 67202. Specific guidelines for manuscript submission appear in each issue of the Bulletin, which can also be accessed on-line at the Kansas Geological Society web site at <http://www.kgslibrary.com>

SOCIETY Technical Meetings

2014 Technical Talks - NEW LOCATION!!!

Tech Talks will resume in September

For More Information or suggestions of speakers
Please contact Dave Clothier: dave@mccoypetroleum.com

NOTICE!!

NEW Location for Technical Meetings

All KGS technical presentations are held at 12:30 p.m. at the Landmark Square Building, located at 212 N. Market. We have a new meeting room on the 4th floor, up the stairs and at the end of the hallway in the Wisdom Center.

Note: For those geologists who need 30 points to renew their licenses, there will be a sign-in sheet at each presentation and also a certificate of attendance.

Please remember to check the website
For the most up to date information on Technical Talks

www.kgslibrary.com
(For the most information, go to the Tech Talks tab)



BOARD OF DIRECTORS

PRESIDENT

Brian Fisher

PRESIDENT-ELECT

Frank Mize

SECRETARY

Leah Kasten

TREASURER

Paul Ramondetta

DIRECTORS

Dave Clothier

Tim Hellman

Frank Mize

ADVISORS

Tom Hansen

Larry Richardson

COMMITTEE CHAIRMEN

Advertising

Kent Scribner

Advisory

Tom Hansen

Larry Richardson

Annual Banquet

Bob Bayer

Budget Committee

Paul Ramondetta

Bulletin

Rebecca Radford

Continuing Education

Robert Cowdery

Distinguished Awards

Dave Clothier

Environmental

Kent Matson

Field Trip

Larry Skelton

Fishing Tournament

Randy Teter

Future Plans

Chuck Brewer

Golf

David Barker

Historian

Larry Skelton

Investment

Paul Ramondetta

Library

Roger Martin

Ted Jochems

Membership

Larry Friend

Nomenclature

John H. Morrison, III

Picnic

Wes Hansen

Public Relations

Robert Cowdery

Shooting Tournament

Larry Richardson

Technical Program

Dave Clothier

Ticket Sales

Bill Shepherd

A.A.P.G. DELEGATES

Ernie Morrison
2018

Douglas Davis
2018

BULLETIN STAFF

EDITOR

Rebecca Radford—Interim (316) 265-8676

ADVERTISING

Kent Scribner

Stelbar Oil Corp. (316) 264-8378

PROFILES/MEMORIALS

Robert D. Cowdery

Consultant (316) 267-9030

EXPLORATION HIGHLIGHTS

John H. Morrison, III

Independent O&G (316) 263-8281

STATE SURVEY

Rex Buchanan

KS Geological Survey (785) 864-3965

SOCIETY NEWS

KGS Library

(316) 265-8676

EDITOR EMERITUS

Wes Hansen

(316) 263-7313

Larry Richardson

(316) 262-8427

K.G.S. LIBRARY

PHONE 316-265-8676 FAX 316-265-1013

email: frontdesk@kgslibrary.com or

Web: www.kgslibrary.com

LIBRARY MANAGER

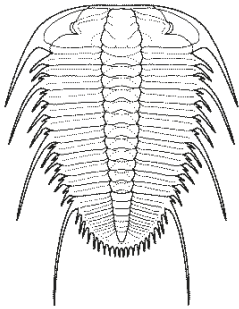
Rebecca Radford 265-8676

manager@kgslibrary.com

The KGS *Bulletin* is published bi-monthly by the Kansas Geological Society, with offices at 212 North Market, Wichita, Kansas 67202 Copyright 2014, The Kansas Geological Society. The purpose of the *Bulletin* is to keep members informed of the activities of the Society and to encourage the exchange and dissemination of technical information related to the Geological profession. Subscription to the *Bulletin* is by membership in the Kansas Geological Society. Limited permission is hereby given by the KGS to photocopy any material appearing in the KGS *BULLETIN* for the non-commercial purpose of scientific or educational advancement. The KGS, a scientific society, neither adopts nor supports positions of advocacy, we provide this and other forums for the presentation of diverse opinions and positions. Opinions presented in these publications do not reflect official positions of the Society.



Twenty-two Trucks Serving
Kansas—Colorado—Texas—Nebraska—Illinois
DST's
Back Pressure testing (G1 & G2)
Slick line services using the same Weatherford
Electronic Pressure Gauges used on DST's



1-800-728-5369
FAX 1-785-625-5620

www.trilobitetesting.com
trilobite@eaglecom.net

SHOPS LOCATED IN:
Hays, KS
Scott City, KS
Pratt, KS
Hugoton, KS
Oberlin, KS
Clay City, IL

CAN YOU NAME THE CRITTER?

Sponsored by Trilobite Testing, Inc.

Is your paleo up to date?

If you know the name of the trilobite,
submit your guess via e-mail to
manager@kgslibrary.com

Remember that *Trilobite Testing* is
sponsoring your efforts, so be sure to thank
Paul Simpson the next time you see him.

**Bulletin committee members and PhD's in
Paleontology are prohibited from entering.**



We've upgraded!!!

We now have a 44" Context Scanner

AND

A 44" Cannon Plotter



**Bring in your old maps,
we have scanned several
and they look great!**

Our pricing Special:

Solid color @ \$4.00/sq. ft.
Line maps w/color @ \$3.00/sq. ft.



President's Letter

Dear Members,

Greetings fellow geologists, I hope all of you are enjoying the summer weather. We have had more than enough rain between bouts of hot weather. I just read some good news that the Lesser Prairie Chicken count is on the rise. Being a long time bird hunter we can all hope for all Kansas wildlife to make a rebound with the increase of moisture this year. Reports from the field from the drilling contractors the much needed rains have caused numerous delays in rig moves and the availability of moving trucks. When dry conditions happen – everyone wants to move at the same time.

Recently I have been contacted by several WSU students from Larry Richardson's Petroleum Class looking for work – if any company still needs summer help you can call me or check with Larry.

The 25th annual Golf Tournament was a great success again. Many thanks to Dave Barker and his golf committee on doing another great job! I checked with Janice and we had at least 153 members register and play this year.

Coming up we have the Annual KGS Picnic on August 15th and the KGS Annual Fishing Tournament on September 12th. Also coming up soon is the 77th Annual KIOGA Convention and meeting on August 17th thru August 19th. Also in September we have the 57th Annual EKOGA and TORP meeting on September 16th through 18th.

This fall the KGS will be putting together a list of speakers for the KGS. If you have any suggestions or would like to give a talk - please contact Dave Clothier or his committee: Hi Lewis, Sonya McDanel or myself. We are also in need of an editor for the Bulletin, at least someone to seek out some good scientific articles. If you have a little extra time, Rebecca will gladly work with you on the "how to" of putting the Bulletin together.

Have a great summer!

Respectfully submitted,
Brian G. Fisher





KANSAS STATE UNIVERSITY

GEOLOGY
DEPARTMENT

GRADUATE EDUCATION
for active professionals

Through: Leading to:
Workshops Academic credits
Field Trips Certificates (pending)
Distance Education M.S. degree

With specializations in:
Petroleum Geology
Groundwater
Exploration Geophysics
Environmental Geochemistry

Information:
KSU Continuing Education: www.dce.ksu.edu
KSU Geology Department: www.ksu.edu/geology
KSU Graduate School: www.ksu.edu/grad
or e-mail George Clark, interim dept. head: <grc@ksu.edu>

ADVERTISER'S DIRECTORY

	<i>page</i>
Allied Cementing Company, Inc	23
American Energies Corp. Nitrogen Rejection	13
Breckenridge Exploration Company	15
Duke Drilling	23
GeoCare Services AAPG	17
GeoSteering	14
Global Geophysical Services, Inc.	15
Kansas Geological Foundation	26
Kansas State University	8
Lockhart Geophysical	23
Lone Star Geophysical Surveys	16
MJ Systems	21
MBC Well logging	23
Murfin Drilling Company, Inc	23
Neuralog	15
PARAGON Geophysical Services, Inc	13
Pratt Well Service	15
Professional Directory	19-20
Sterling Seismic Services	13
Sunrise Oilfield Supply	23
Tomcat Drilling	23
Trilobite Testing	6
Walters Digital Library	2
Weatherford	27
Well Enhancement Services	14

Log in to
Walters Digital Library
At
www.kgslibrary.com

Log in as our guest
and see the Society's Database

A convenient way to see what
you might want to order!
Call or email your order to:
316-265-8676
frontdesk@kgslibrary.com

ADVERTISER'S RATES: 2014

Full Page	B&W	Color
6 issues	\$2,000	\$2,500
3 issues	\$1,080	\$1,325
1 issue	\$480	\$525
1/2 Page		
6 issues	\$1,000	\$1,500
3 issues	\$540	\$825
1 issue	\$225	\$350
1/4 Page		
6 issues	\$600	\$900
3 issues	\$325	\$525
1 issue	\$150	\$250
1/8 Page		
6 issues	\$300	\$500
3 issues	\$175	\$325
1 issue	\$75	\$185
Professional Ad (Business Card)		
6 issues	\$90	\$180

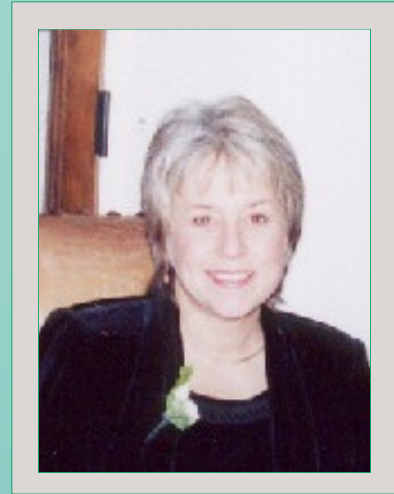
For one-time ads, call Rebecca at 316-265-8676

From The Manager

Dear Members,

What a nice spring and early summer.....if you're a frog! Really, the rain was much needed and everything is so nice and green, but I know it has played havoc with your drilling schedules. Even so, everyone is staying busy and busy is good.

Your library is gearing up for some major changes. We had an opportunity to get the front space back and we took advantage of that and are presently getting bids to open up and combine the two areas. Our plan is to tear out my office and the wall behind the old scout tickets and that will really open up the library and give us much needed space to expand our files. You will see a photo of our latest water leak from the 2nd floor on page 18 and also photos of some of the front space. We hope this expansion does not cause too much chaos and we plan to stay open during the construction.



We have added another employee since my last letter. Angela Forrest is a recent graduate with her Master's degree in Geology with emphasis in Environmental, especially interested in water resources. We love having her on-board our staff but we know she is looking for that "perfect job" in her area of interest so if any of you have connections, please keep Angela in mind. In the meantime, please welcome her to our library family.

Upcoming KGS Events: our **Annual Picnic will be held on Friday, August 15th** back out at All Star Sports West. Also coming up in **September, Friday the 12th, is our Annual Fishing Tournament**. This is the 30th year for our fishing tournament so I am hoping that we can get at least 30 people to attend! Come on, you know you all love to go fishing!

Respectfully submitted,

Rebecca Radford

Manager



**Let Us Print Your Geo Reports
And Save Your Time For Finding More Oil & Gas
Top Quality Color Printing For Our Membership**

Email your files to: kgsorders@gmail.com

Kansas Geological Society Board Minutes

The monthly meeting of the Kansas Geological Society was held on Tuesday, April 14, 2014. President Brian Fisher called the meeting to order at 11:40 AM at the Petroleum Club.

PRESIDENT'S STATEMENT – B Fisher welcomed board members/advisors/guests and gave summary of upcoming KGS events and activities. Additionally, the Seismicity Conference is to be held April 16 – B. Fisher and D. Clothier to attend.

SOCIETY ACTIVITIES/EVENTS/UPDATES-

- A. April 15 – Tech Talk – Mike Pinnell – “*Central Utah Thrust Belt Exploration is in its infancy*”
- B. April 22 – Dr. Walt Manger – “*The Mississippian Lime Play: what have we learned?*”
- C. April 22 – Foundation Spring Mixer – 4:00 pm. Speaker Mike Smith, Mixer follows
- D. April 24 – Earth Day at Sedgwick Co Zoo

APPROVAL OF MINUTES - The March 14, 2014 minutes were reviewed. Motion was made to approve minutes as written by Tim Hellman, 2nd by Dave Clothier. Motion passed by unanimous vote.

FINANCIAL REPORT/MANAGERS REPORT

A. Treasurer's Report – P. Ramondetta presented the Treasurer's report for March. He reported interest accrued from CD's at \$750.03 for the month of March, presenting YTD total of \$1,046.37 for 2014. D. Clothier moved to accept the Treasurer's Report, T. Hellman seconded, and the vote carried unanimously.

B. Manager's Report- R. Radford presented the Manager's Report for March, 2014. Total income for the month was \$72,919.02, with expenditures of \$52,166.63, thus generating a net gain of \$20,752.39. The year to date gain is, therefore, \$17,550.28 The Walters Digital Library report shows current membership of 306 members. The WDL had a net income of \$29,096.50 after expenses in March, with year to date income of \$62,943.72. New scanner and work stations becoming available to work on completing East Range data entry. Manager's report was approved.

OLD BUSINESS

A. Investment Committee – Committee will continue to meet with 2 more financial advisors.

B. Nomenclature Changes - R. Radford brought up issue of increasing sales for Nomenclature Data by lowering price, since it is now provided electronically. Board determined Library management can make that determination.

NEW BUSINESS

A. Data Integration Project w/ Foundation – R. Radford reviewed current 5 year project to integrate Foundation data in the basement into Library data files. Currently, KGS has contributed 4 KGS employees, then Foundation refunds costs at years end. Approx 23% of data so far is actually new to KGS library, so it is enhancing library services. B. Fisher reported that Foundation requested that KGS library take over costs of data integration. Discussion points:

- Foundation has currently set budget at \$20,000 yearly.
- Currently we give 5% of gross profits to foundation, although recently we have been giving more.
- Recommend to examine tax benefits and possible liabilities
- This could be a positive way to re-invest in organization and KGS could take over costs of project
- No changes to program funding until details examined

B. Future Plans Committee- Committee should be established as standing committee possibly replacing the Building Committee so that it can continue working beyond 1 year of president's term. B. Fisher appointed Chuck Brewer to chair the Future Plans Committee. Other committee members include Tim Hellman, Paul Gunzelman, and Dave Clothier. B. Fisher will invite another past president to join committee.

C. AAPG Delegate Expenses - In the past, delegates have paid their own way, or paid through company expenditures, although KGS has covered some. D. Clothier suggest offer to pay for delegates for next convention, since we did not send R. Radford or pay for a booth at Houston Convention. No motion needed at this time.

D. Maternity Leave – R. Radford requested additional paid maternity leave for longtime employee, as she was only going to going to receive 1 week and use vacation time. Motion made by T. Hellman to approve 2 week paid maternity leave for employee. D Clothier 2nd, vote carried unanimously. This is not a policy change as Library Manager has discretion in employee benefits.

E. Expansion of Library data to other states- T. McHenry inquired about the possibility of increasing library data assets to include data from other states. R. Radford brought up proprietary issues and our inability to re-sell purchased data. Maintaining data for research only within library would require more storage space for paper copies.

VIII. ADJOURNMENT

Motion to adjourn made by D. Clothier and seconded by T. Hellman. Meeting adjourned by B. Fisher at 1:38 p.m.

Respectfully submitted, Leah A. Kasten, Secretary

The monthly meeting of the Kansas Geological Society was held on May 14, 2014. Brian Fisher called the meeting to order at 11:40 AM at the Petroleum Club.

Mr. Fisher welcomed board members/advisors/guests and gave summary of upcoming KGS events and activities. Announcement made regarding the resignation of Bob Cowdery as AAPG delegate. New delegate will be appointed.

APPROVAL OF MINUTES - The April 14, 2014 minutes were reviewed. Motion was made to approve minutes as written by Dave Clothier. Motion passed by unanimous vote.

FINANCIAL REPORTS

A. Treasurer's Report – P. Ramondetta presented the Treasurer's report for April. He reported interest accrued from CD's at \$296.38 for the month of April, presenting YTD total of \$1,342.75 for 2014. Treasurer's report was unanimously approved.

B. Manager's Report- R. Radford presented the Manager's Report for April, 2014. Total income for the month was \$73,452.32, with expenditures of \$58,672.70, thus generating a net gain of \$14,779.20. The year to date gain is, therefore, \$32,329.90. The Walters Digital Library report shows current membership of 269 members. The WDL had a net income of \$26,080.87 after expenses in April, with year to date income of \$89,024.59. Manager's report was approved.

OLD BUSINESS

A. Investment Committee – P. Ramondetta made a motion stating the intent to eventually transfer \$200,000 from KGS's cash reserves to higher yield investments that may carry some risk. Any new investment, however, would require a new vote from the Board. Motion was passed after some debate.

B. Foundation Integration Project - Foundation President, Robert Stolzle urged a more rapid and efficient effort to integrate donated data, now boxed in the basement, into the KGS library system. He suggested hiring a full time employee to lead effort. He proposed the KGS assume funding and payroll costs of the KGF employees as of January 2015. R. Radford indicated that the Society has contributed \$30,000/yr already to this effort. D. Clothier made motion to change the old "understanding" of paying 5% override of "gross" income from the digital library to a 5% of "net" income instead. Further, the Society will assume payroll costs of the data integration. Motion passed after some debate.

NEW BUSINESS

A. Statement of Support for Investigation by Geological Survey into increased seismicity in KS--

B. Fisher Proposed that the Society endorse the Kansas Geological Survey's authority to investigate the perceived increase in earthquake activity across the state and how it might related to oilfield activity.

B. Availability of front office space: Future Plans Committee—D. Clothier made a motion to authorize the Society to take over the attorney's office space on Market Street, which will soon be vacated. An open hallway will then connect the library with these new offices. Dave will act as agent to negotiate with the landlord, who is expected to pay for the new modifications in the hall. Rent for the new space is expected to be \$2000 / month and will be added to our existing lease. Motion passed after some discussion.

C. Upcoming KGS Board meetings – B. Fisher announced that there will be a June Board meeting, but no board meetings in July or August.

D. Insurance for Janice & Rebecca – Frank Mize made a motion to give Rebecca and Janice financial support regarding their Medicare and Dental premium costs. Motion passed.

E. Lesser Prairie Chicken Issue- T. McHenry indicated the Society should act to counter the Federal effort to regulate the Lesser Prairie Chicken Habitat. No action determined at this time.

VIII. ADJOURNMENT

Meeting adjourned by B. Fisher at 1:45 p.m.

Respectfully submitted, Leah A. Kasten, Secretary

KGS Annual Golf Tournament

We had another very successful golf tournament this year out at Terradyne Country Club on Monday, June 30th. We had 162 golfers and even though it was a little windy, it was a beautiful day and all had a great time. Below is a photo of Dave Clothier getting ready to try for the Hole-In-One, Million Dollar prize. He didn't make the hole-in-one but we all had a good time watching him try for it.



Thanks go out to **David Barker** for bringing us such a great tournament and to all those companies and individuals who helped to sponsor this event.

The Kansas Geological Society Thanks The Following For Their Support of the Golf Tournament

Hole Sponsors

Basic Energy - Cobalt Energy LLC - Gressel Oil Field Service, Inc. - Discovery Drilling
Log-Tech of Kansas, Inc. - Martin Pringle Oliver Wallace & Bauer, LLC
McDonald Tank Equipment - Nabors Completion & Production Service Co.
Pickrell Drilling Co., Inc. - Ritchie Exploration, Inc. - Stelbar Oil Corp.
Sunrise Oilfield Supply - Tomcat Drilling, LLC

General Sponsors

Abercrombie Energy, LLC, Baker Petrolite, Bear Tire, Inc., Brito Oil Company,
The Buckeye Corporation, Clark Corporation, CMX, Inc., Downing-Nelson Oil Co., Inc.,
Dyna-Log, Inc., Eagle Creek Corporation, Grand Mesa Operating Co., Wesley Hansen, Headke-Saenger
Geoscience, F.G. Holl Co., Lario Oil & Gas Martin, Pringle, Oliver, Wallace & Bauer, LLC,
McCoy Petroleum, McDonald Tank Equipment, Maverick Drilling, LLC, MV Purchasing,
National Oilwell, NCRA, Paragon Geophysical Services, Range Oil Company, Kirk Rundle Consulting,
Smith Supply, Trans Pacific Properties, TREK AEC, LLC, Val Energy, Inc., Varel International,
Vess Oil Corp., Vincent Oil Corp.

Margaritas: Native Drilling Fluids, LLC

Breakfast: Oil Producers, Inc.

Lunch: Murfin Drilling Company



Providing Quality Seismic Since 1993

Visit our website at
www.parangogeo.com



3500 N. Rock Rd., Bldg. 800, Wichita, KS 67226 316-636-5552
paragon@parangogeo.com

WANTED



LOW BTU GAS to Buy or Treat

www.NitrogenRejectionUnit.com



American Energies Corporation
 316-263-5785

Experience, Integrity, Innovation...



SEISMIC SERVICES, LTD.
www.sterlingseismic.com

**Renegade Seismic Studio Refraction Statics
 Z-White Spectral Enhancement
 Tsunami Pre-Stack Time Migration**

Projects from one square mile "Postage Stamp" 3Ds to the 1,100 square mile nine 3D merge through PSTM we completed in 2006, no project is too small or too big. All projects are given the same attention to detail that we have become known for.

**Structural or stratigraphic, we've got the experience
 to provide you with a superior dataset.**

303-347-9011



WOULD YOU LIKE TO INCREASE YOUR PRODUCTION AT A FRACTION OF THE COST OF HORIZONTAL DRILLING?



Well Enhancement Services, LLC is jetting laterals utilizing new technology and coiled tubing. We now have the ability to place hundreds of gallons of acid hundreds of feet away from the well bore. This allows us to not only enhance existing production but to produce reserves previously unreachable. It has established itself by repeatedly increasing production in both new and existing wells. Contact us for more information, questions or to schedule your next well with **WES**.



Please Contact Us:

Phone: (785) 625-5155

Fax: (785) 625-4151

Field: (785) 259-4638

wesofhays@hotmail.com
Box 87, Schoenchen, KS 67667

“Tap into success.....with WES”

www.**GeoSteering**.com

281-573-0500
info@geosteering.com

Free introductory consultation with modeling: let us demonstrate whether images or propagation resistivity could add value to your well.

Personnel with degrees & 20+ years of oilfield experience

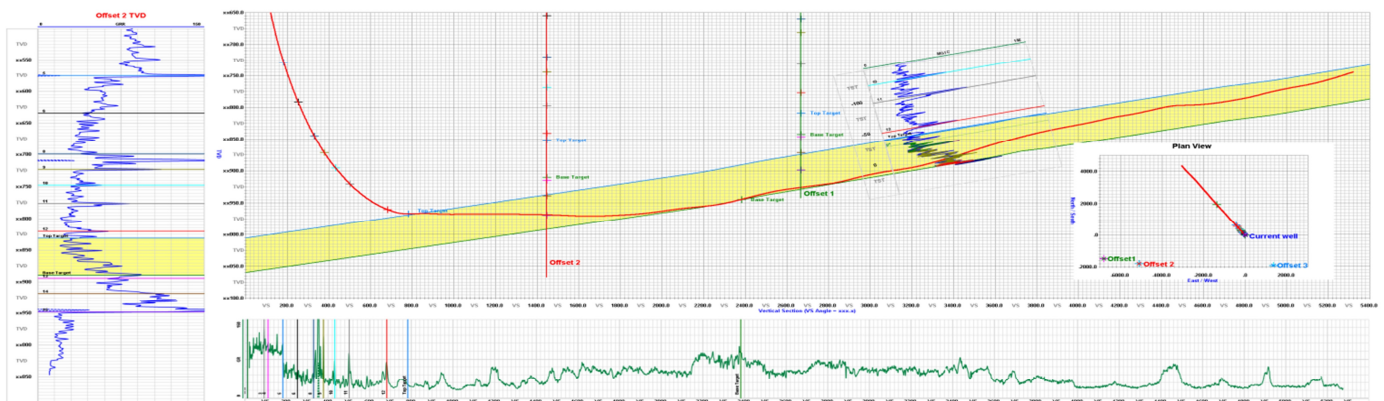
Proprietary software

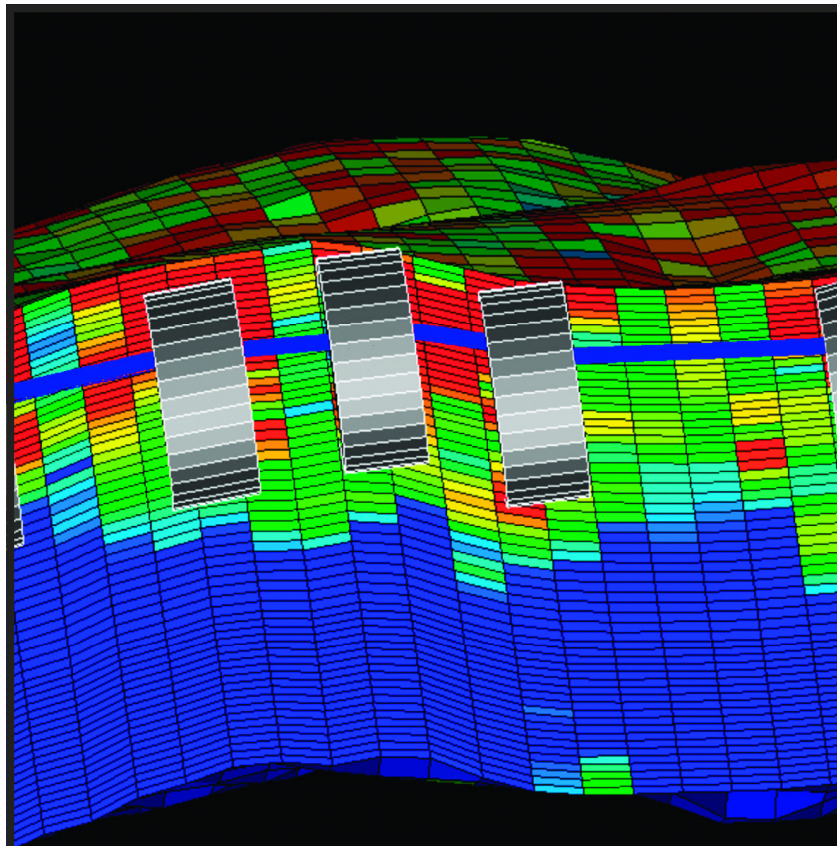
TST interpretation for GR only jobs

Image displays / interpretation for jobs with azimuthal GR, resistivity or density

Resistivity modelling / interpretation for jobs with LWD propagation resistivity

Real-time (always)





PRODUCTION FOCUSED SEISMIC

Global's E&P Services translates seismic images and attributes into meaningful knowledge to improve your bottom line finding and development costs. We integrate seismic, microseismic, well logs, core data, petrophysical analyses, completion information, and production data to help optimize all phases of your E&P execution in both conventional and unconventional reservoirs.



Global Geophysical Services, Inc.

13927 S. Gessner Road • Missouri City, TX
tel +1 713-972-9200

www.globalgeophysical.com

GLOBAL E&P SERVICES



SEISMIC ACQUISITION

Check us out at www.breckex.com

Breckenridge Exploration Co., Inc.
Highway 180 E
P.O. Box 789
Breckenridge, TX 76424
Bus: (254) 559-7566

Denver Colorado Office
600 17th Street, Ste. 2800 S
Denver, Colorado 80202-5428
Bus: (303) 563-5301
Mob: (254) 559-0587

Sensible Seismic Acquisition in the Mid-Continent and the Rockies



Neuralog
Turning Paper Into Petroleum

Bryan Mills
Regional Sales Manager

Solutions for Today's Geoscientists

- Scan, Print & Digitize - Logs & Maps
- Geological Interpretation
- Master E&P Data Management

1.281.240.2525

bmills@neuralog.com • www.neuralog.com



**PRATT
WELL SERVICE
INC.**
Complete Well Service

Since 1946

P.O. Box 847
Pratt, Kansas 67124

Kenneth C. Gates
President

Kevin C. Gates
Vice President

1-800-660-7974
Fax: 620-672-5902

Member KIOGA /AES

Equipment yard & field office:
1 3/4 miles North on Highway K-61 from 54 & K-61 Junction

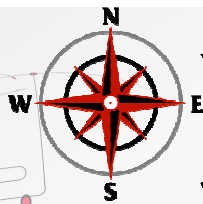
- Experienced Crews
- Rod & Tubing Service
- Workover & Completions
- Swab Tanks
- Pole Masts-Single and Double Derricks
- Air Foam Unit
- Monitor & Water Well Drilling
- Reverse Circulating Pump & Power Swivel Equipment
- Statewide Oilfield Hauling
- Environmental Cleanup
- Vacuum Trucks/Water Trucks
- Dirtwork-Dozers, Grader, Backhoe

Hydrovac Excavation Service

- Cleaning cattle guards
- Mud tank cleaning
- Potholing
- Trenching
- Pipeline Crossings

www.prattwell.com

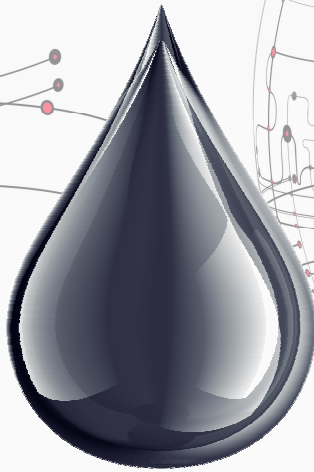




LSGS

LoneStar Geophysical Surveys

It's Real Simple. It's Real Effective.



Locating every last drop.



Superior Seismic Acquisition System



Data Recording 2D, 3D, 4D & VSP



AHV-IV™ Commander 364



Permitting Services



HSE Management System



Front-End Services



Shot Hole Drilling



Brush Clearing



Chainsaw Crews



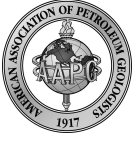
Heliportable



Submit a bid request online:

www.lstargeo.com

441 So. Fretz Avenue Edmond, Oklahoma 73003 (O) 405.726.8626 (F) 405.285.8521
lsgs1@lstargeo.com

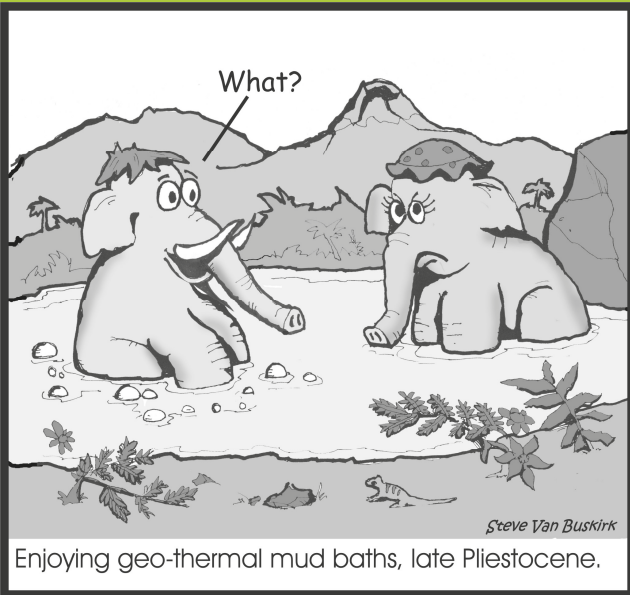


Security for AAPG Members
& Their Families
Through Group Insurance

Life
Health
Dental
Disability
Auto and Homeowner
Supplemental Plans

AAPG's
GeoCare Benefits Insurance Program
P. O. Box 9159
Phoenix, AZ 85068-9159
800-337-3140
E-mail: geocarebenefits@agia.com
www.geocarebenefits.com

Some things never change!



Thank you to KGS member Steve Van Buskirk for the cartoon

*The KGS Library is pleased to
announce a new service*

Creating
LAS files
from our logs
or yours

**\$20.00 per
curve!!**

Quick
turn-around

Send us your log file
or tell us which of
ours you would like
converted.

316-256-8676



The Kansas Geological Society maintains its ownership and
copyright when converting library log files to LAS

Another water leak from 2nd floor

Over Memorial Day weekend, we had another water leak in the library. Luckily one of our WSU students was working and discovered it and called me at home. This leak came from the 2nd floor hot water heater. No files were ruined but the carpet sure got stained.

The good news is that we are taking over the front space in the building and when we start moving things around, we will make sure nothing sits under that spot again as we have had several leaks come from that area. We know there are toilets, sinks and hot water heater right above us in that area so I will make sure we keep the data out of harms way as much as possible. Below are some photos of the new area up front. We will be tearing out the manager's office and the offices on the other side and open the library up. This will allow us a lot more floor space to have data available. Also a nice new conference room and 3 front offices with windows to the outside world!



NOTICE!!!!

*Tech Talks in New Location
We have moved our technical
meetings to the same building the
Library is in: 212 N. Market
4th floor
In the Wisdom Center*



Kansas Geological Foundation Video / DVD Collection

The KGF has an extensive collection of videos available for check-out at no charge. Only pay for shipping back.

These are ideal for classroom or general public viewing.

See the web for titles & descriptions
www.kgfoundation.org

Call 316-265-8676
Ask for Janice to check out videos

PROFESSIONAL DIRECTORY

Kirk Rundle
Consulting Geophysicist

*3D Seismic Design, Acquisition to Processing QC,
 Interpretation and Analysis, Subsurface Integration*
 7340 W. 21st. N., Ste. 100
 Wichita, Kansas 67205

Office: 316-721-1421 Fax: 316-721-1843
 Email: kirk@rundlegeo.com

ROGER L. MARTIN
Independent Petroleum Geologist

200 E 1st St, Ste 405, Wichita, KS 67202

Office 316-833-2722 Cell: 316-250-6970
 KS Field Cell: 316-655-1227
 Fax: 316-425-3829
 Email: rogermartingeo@yahoo.com


Blue Ribbon Drilling, LLC
 PO Box 279, Dewey, OK 74029

Phone and Fax: 918-534-2322
 John's Cell Phone: 918-440-9639
 Larry's Cell Phone: 918-440-9638
 Jeff's Cell Phone: 918-440-9647
 Email: johnroutree@bratco-operating.com

ALFRED JAMES III
Petroleum Geologist
 Kansas - Colorado - Utah

200 W. Douglas, Ste. 525, Wichita, Kansas 67202

SIPES # 1111
 Office (316) 267-7592
alfred.james55@yahoo.com



Scott Banks
Petroleum Geologist
banksbs@aol.com
 Cell: 316.253.8550

1700 N. Waterfront Pkwy.
 Bldg. 300 • Suite C
 Wichita, KS 67206

Phone: 316.558.5262
 Fax: 316.558.5263

Banks Resources

M. Bradford Rine
Honorary Life Member—Kansas Geological Society

*Licensed Geologist—KS, #204
 Registered Professional Geologist—Wyo. # 189
 Certified Geologist—A.A.P.G. # 2647
 S.I.P.E.S. # 1584 S.P.E. #109833-4*

PROSPECT EVALUATION • PROSPECT GENERATION
 WELLSITE SUPERVISION • EXPERT TESTIMONY • OPERATIONS
 PROPERTY EVALUATION • RESERVOIR STUDIES
 DRLG./COMP. CONSULTATION

Suite 415 Office: (316) 262-5418
 100 S. Main Fax: (316) 264-1328
 Wichita, KS 67202 Cell: (316) 250-5941

WESLEY D. HANSEN
Consulting Geologist

Well site Supervision • Geologic Studies
 212 N. Market, Ste 257
 Wichita, Kansas 67202
 Off: (316) 263-7313
 Mobile: (316) 772-6188
whansen4651@sbcglobal.net



Paul Gunzelman
 President/Geologist

Wichita, Kansas 316.634.6026
 email p.gun@sbcglobal.net



KEVIN L. KESSLER
 INDEPENDENT/CONSULTING PETROLEUM GEOLOGIST

WELLSITE SUPERVISION • GEOLOGIC RESEARCH
 OIL & GAS PROSPECTS
 KANSAS & EASTERN COLORADO

MAILING ADDRESS	PHONE
1199 N. PONDEROSA RD.	RES.: (316) 522-7338
BELLE PLAINE, KS 67013	MOBILE: (316) 706-6636
EMAIL: kessler1199@aol.com	

MELLAND ENGINEERING, INC.
Petroleum Engineering & Geological Consulting

James E. Melland, P.E., P.G.
 President

Office: (620) 241-4621 Fax: (620) 241-2621


jamesm@mellandengineering.com
www.mellandengineering.com

P.O. Box 841, McPherson, KS 67460

KGJ ENTERPRISES

Contract Oil & Gas Accounting &
 Office Management

Kathryn G. James, MBA (316) 775-0954
 4278 SW 100th ST. (316) 250-5989
 Augusta, KS 67010 kgjames@onemain.com



Steve Van Buskirk
Petroleum Geologist

Van Buskirk Geo-Consulting

15171 Ridgfield Ln Home: 719-487-8297
 Colorado Springs, CO 80921 Cell: 719-393-2900
 and Nexleveline@msn.com
 514 Rumsey
 Kiowa, KS 67070 Available for Well site work



Geotech & Design Services

7171 Highway 6 North, #202
Houston, Texas 77095

Data digitizing, drafting & computer graphics



Tel: (281) 858-7100

Fax: (281) 500-8534

heather.wilson@geotechmap.net

Heather Wilson
Account Manager

www.geotechmap.net

Next KGS Event

The Family Picnic!!

All Star Sports West

Friday Night, August 15th



**We Invite You
To join**

***Kansas
Geological
Foundation***

*\$50.00 membership is
tax deductible*

Call 316-265-8676

*Or send checks to:
Kansas Geological Foundation
212 N. Market, Ste. 100
Wichita, KS 67202*

The Following Are For Sale

*Kansas Completion Cards:
Several sets (call for more information)*

*Oklahoma Completion Cards:
2 sets—entire state*

Nebraska Completion Cards—West ranges

New Mexico Completion Cards

North Dakota Completion Cards

Utah Completion Cards

*Microfiche Electric Logs
Kansas
Oklahoma
Texas*

Geological Office Furniture:

- 8-drawer completion card cabinets—21 available
- 7-drawer cabinets—10 available
- Map cabinets—metal—2 available
- Map racks—different sizes—6 available

Call: 316-265-8676
Ask for Ted

Coming Soon

KGS Fishing Tournament

Friday, September 12th

Pratt County Fishing Lake

Registration flyer in this issue
(On-Line: Go to Events Tab)

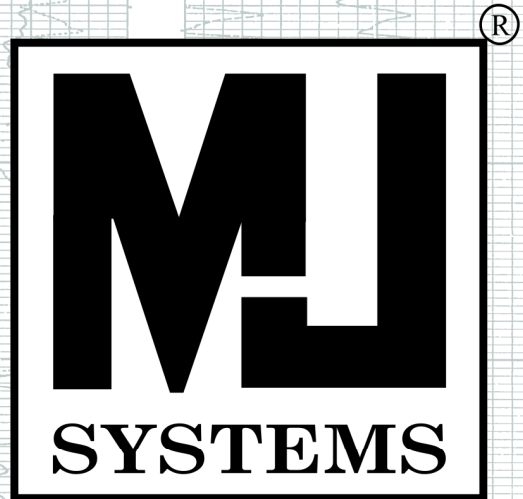


NOMENCLATURE

The Society Nomenclature committee has changed the way we produce the new field information.

We are now able to email out the updates of fields for a nominal cost to the subscriber. The old cost was \$250.00 per year to receive the 4x6 cards. We now have moved to an excel spreadsheet of fields which is much easier to update and can be emailed out to subscribers. The cost is now \$100.00 per year for a subscription.

If interested, please call Rebecca at the KGS Library.
316-265-8676



Logs Since 1971

www.mjlogs.com

6 MILLION LOGS

DEPTH REGISTERED

**INTERNET
DOWNLOADS**

**ONLINE
SEARCH**

SEARCH AND FILTER BY DEPTH

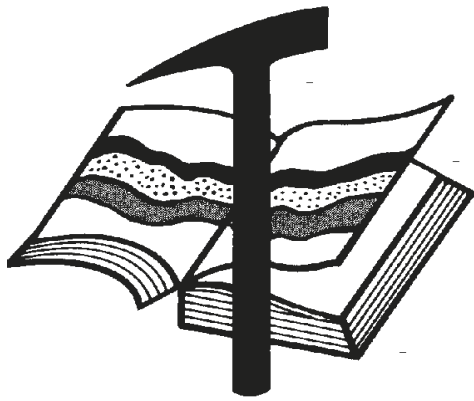
OWN THE LOGS

LogSleuth Software

CLUB WEB

WEB SITE CATALOGUE

1-800-310-6451



Kansas Geological Foundation

Web Site: www.kgfoundation.org

**212 North Market
Wichita, Kansas 67202**

A not-for-profit educational and scientific corporation

GOALS:

- promote geology and earth science
- preserve geological records
- establish memorials and endowments
- support field trips and seminars
- financial aid and grants to students

PLEASE HELP SUPPORT THE FOUNDATION

Kansas Geological Foundation Services

The Kansas Geological Foundation provides the following services as a part of the organization's commitment to educate the public regarding earth science.

Speaker's Bureau

A list of speakers available to talk about various aspects of geology may be obtained by contacting Janice Bright at the KGS Library, 265-8676. This service is free to the public.

DVD/Videotape Library

The KGF maintains a DVD & videotape library focused primarily on the various fields of earth science. These tapes may be checked out without charge by the public. To obtain a list of tapes, please contact the KGS Library, 212 N. Market, Ste. 100, Wichita, KS 67202, or call Janice Bright at 265-8676.

The Kansas Geological Foundation was founded in March, 1989 as a not-for-profit corporation under the guidelines of section 501(c)(3) of the tax code to provide individuals and corporations the opportunity to further the science of geology. It is dedicated to providing charitable, scientific, literary and educational opportunities in the field of geology for the professional geologist as well as the general public.

KGF can receive in-kind donations through which the donor may receive a tax deduction. Of equal importance, the KGF provides the financial resources to sort, process and file this data at the KGS library. If you have a donation to make, please contact the KGF at 265-8676.

Your tax-deductible membership donation helps to defray the cost of processing donations and to support public education programs about the science of geology. Annual membership begins at \$50.00 per year. Donations of \$100.00 or more are encouraged through the following clubs:

Century Club	\$ 100 to \$ 499
\$500 Club	\$ 500 to \$ 999
Millennium Club	\$1000 to \$5000
President's Club	\$5000 and over

WESTERN KANSAS
SOUTHERN NEBRASKA



EASTERN COLORADO
OKLAHOMA & TEXAS PANHANDLES

10 Drilling Rigs

10 Well Service Rigs & Roustabout Services

For contract information, please contact:
Blaine Miller / Drilling Department
316-858-8607 (Direct) or 316-267-3241

For contract information, please contact:
Alan Hays, Well Service Sprvsr.
785-421-2103 or 785-567-8739 (cell)

250 N. Water #300—Wichita, KS 67202

East Highway 24—Hill City, KS 67642

DUKE

DRILLING COMPANY

ROTARY DRILLING CONTRACTOR

620 Hubbard PO Box 823
Great Bend, KS 67530
Phone 620-793-8366

100 S. Main, Ste. 410,
Wichita, KS 67202
Phone 316-267-1331
Fax 316-267-5180

TIMOTHY J. SANDERS
tsanders@tomcatdrilling.com
CELL (316) 259-1652

WWW.TOMCATDRILLING.COM

TOMCAT DRILLING LLC

CORPORATE OFFICE
8301 E. 21ST NORTH, SUITE 360
WICHITA, KANSAS 67206
PHONE (316) 262-8554
FAX (316) 267-0749

FIELD OFFICE AND YARD
225 NW HIGHWAY 270
WOODWARD, OKLAHOMA 73801
PHONE (580) 254-3026
FAX (580) 254-3028

5 ROTARY RIGS SERVING
OKLAHOMA, KANSAS AND
THE TEXAS PANHANDLE

Great Bend (620) 793-5861 Ness City (785) 798-3843 Medicine Lodge (620) 886-5926

Acidizing Available at Medicine Lodge District

Russell (785) 483-2627 Oakley (785) 672-3452

2D & 3D Vibroseis Acquisition
ARAM*AIRES Seismic Recording System

1600 Broadway, Suite 1660 • Denver, CO 80202-4915
(303) 592-5220 • info@lockhartgeo.com
for complete information go to: www.lockhartgeo.com

MBC

WELL LOGGING & LEASING
UNMANNED GAS DETECTORS
MUD LOGGING
CERTIFIED INSTRUMENT TECH

AUSTIN GARNER **MARLA GARNER**

24-HOUR PHONE (620) 873-2953
MEADE, KANSAS

FULL LINE SUPPLY STORE
With Pump Shop, New & Used Pipe,
Equipment and Fittings
Exclusive S-55 casing source

STORES:

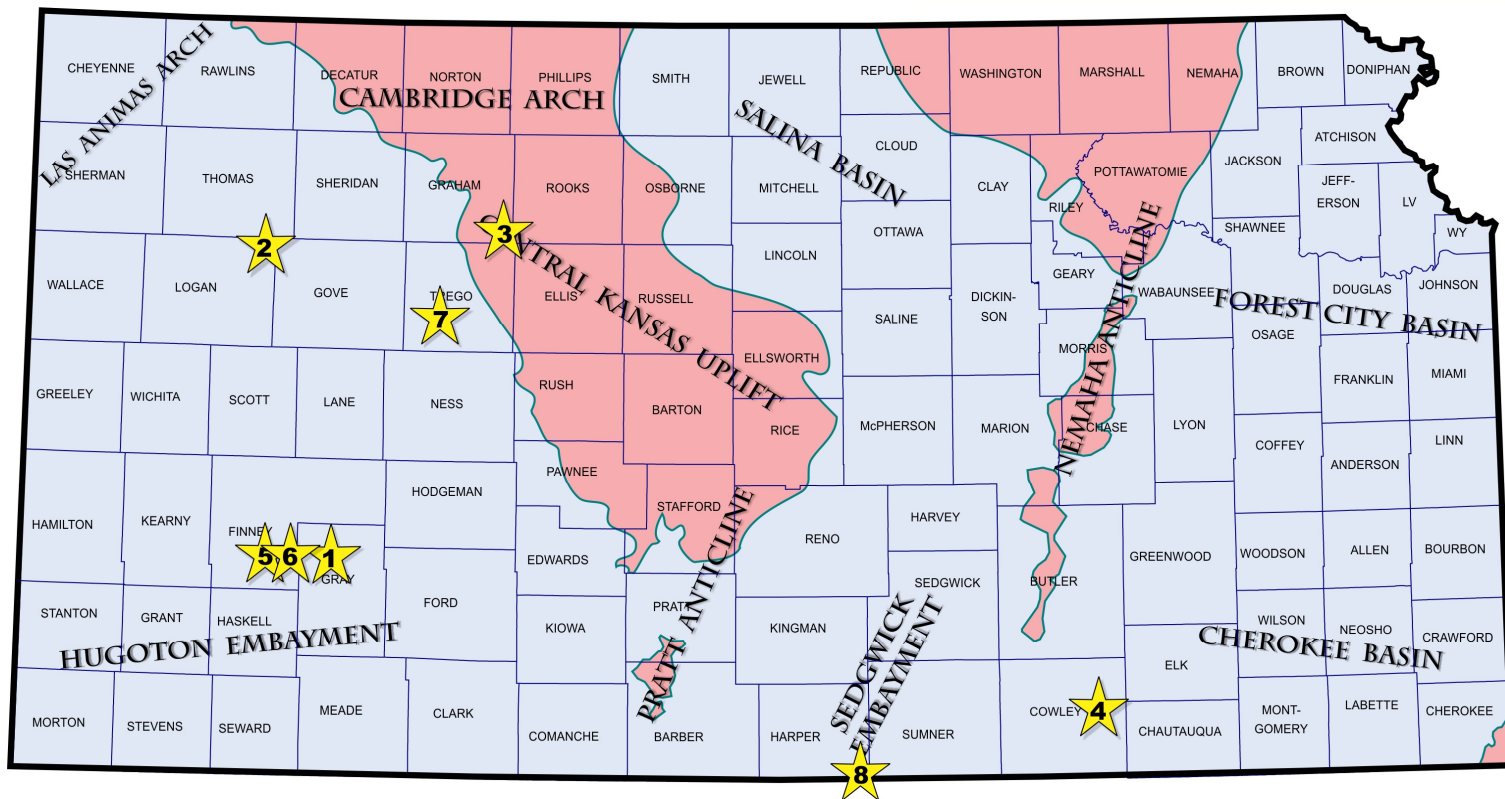
Chanute, KS	620-431-6500	Ness City, KS	800-589-5733
El Dorado, KS	316-321-9323	Osawatomie, KS	913-755-2297
Garden City, KS	877-976-1700	Spivey, KS	620-532-5261
Hays, KS	785-650-0199	McCook, NE	308-345-1542
Hugoton, KS	620-428-6604		

SALES OFFICES:

Wichita, KS	800-777-7672	Denver, CO	303-349-8417
Williston, ND	701-570-9255		

Exploration Highlights

By John H. Morrison, III
Independent Oil & Gas



1 • Lasso Energy LLC, Chase (KS), has established a the Ingalls Northwest oil field in western **Gray** County with the completion of their 2 Renick (API 15-069-20460). Located in the SE NW NE of section 19- T25s- R29W, the wildcat well found oil deposits in both the Cherokee and Mississippian formations. Completion details are confidential. Fossil Drilling tools bottomed the well at a total depth of 5206 ft. Operator explored nearly one and one-quarter miles west of closest known production in the Ingalls field (est 1986, Marmaton, Cherokee and Mississippian oil), or one and one-quarter miles east of the town of Charleston, Kansas.

2 • Red Oak Energy, Inc., Wichita (KS), is producing an undisclosed amount of crude oil at a wildcat test in **Logan** County, located about four and one-quarter miles south of Oakley, Kansas. The 1-35 Rohleder Trust (API 15-109-21228), spotted in the SW NW NE of section 35- T11s- R32W, was drilled to a total depth of 4745 ft. The wildcat well found new Lansing-Kansas City oil reservoir one and one-half miles east of the recently established Hockersmith field in the NW/4 of section 34, which was discovered by New Gulf Operating LLC earlier this year. The new oil field has been named Sky Chief Northwest.

3 • McElvain Energy, Inc., Denver (CO), has opened the Firefly oil field in the southeast corner of **Graham** County - a little over one-half mile north of the Trego County line. The discovery well, 31-8 Walz (API 15-065-23995), was drilled to a total depth of 4000 ft in the SE SE NE of section 31- T10s- R21W, about seven miles south and seven miles west of Palco,

Kansas. VAL Energy drilling rig was used. Discovery site lies one and one-half miles west of established production in the Noah Southwest field (est. 1954, Marmaton, Arbuckle oil). Closest LKC production in the area is located nearly one and one-half miles to the north in the Grecian field, which has given up over 58,000 barrels of oil since 1979 from a depth around 3500 ft.

4 • TAOS Resources Operating Company LLC, Houston (TX), has a new oil discovery in **Cowley** County, south-central Kansas. The 1 Girod (API 15-035-24553) , located in the NW NW NW of section 17- T32s- R7E, has been placed on the pump making an undisclosed amount of oil from perforations made in the Lansing-Kansas City formation. Wellsite is situated slightly over one mile southwest of oil production within the School Creek Northwest field (est. 1947, Cherokee, LKC - Cleveland Sand oil), and is about three and one-half miles southwest of the town of Cambridge, Kansas. Rotary total depth was ceased at 3450 ft. Completion details are unknown. The new field is named the Sundance field.

5 • OXY USA, Houston (TX), is pumping an estimated 80+ barrels of oil per day from the Mississippian (Saint Louis) formation at the 1 Staley A (API 15-055-22217), located in the NW SW SW of section 27- T25s- R32W, in **Finney** County. The wildcat test and Staley Southeast pool opener is located about two miles south and seven miles west of Pierceville, Kansas. Aztec Well Servicing Company tools

bottomed the well at a total depth of 5162 ft. The well has produced nearly 17,000 barrels of crude during its first six months on the pump.

6 • American Warrior, Inc., Garden City (KS), has explored nearly five miles north of the Beach field (est. 1979, Mississippian oil) and to discover new Mississippian oil reserves at the 1-2 Clark (API 15-055-22284) in **Finney** County. Located about one and one-half miles north of the town of Pierceville, the wildcat well is producing oil from the Saint Louis zone. Duke Drilling tools drilled the well to a total depth of 5050 ft in the NW NE SE of section 2- T25s- R31W. Completion details are not available. The new field has been named the Pierceville field.

7 • Phillips Exploration Company LLC, Andover (KS), is pumping 25 barrels of oil and 30 barrels of water per day at its 1-21 Gaither (API 15-195-22887) wildcat test in **Trego** County. The new unnamed pool discovery well is producing 38 degree gravity crude from Mississippian perforations shot from 4198 to 4201 and 4205 to 4216 ft. Log top of the Mississippian was called by wellsite geologist Patrick J. Deenihan at 4198 (-1872 kb). Rotary total depth was stopped at 4300 ft. Well is located in the C SE NE of section 21- T14s- R24W, or about thirteen miles south and five miles west of Wakeeney, Kansas. Closest producing oil field in the vicinity of the new find lies over two and one-half miles to the west in the Hackberry field (est 2009, Mississippian oil). The new field has been named the Yep field

8 • M & M Exploration, Inc., Broomfield (CO), is flowing 300 Mcf gas daily from Cherokee Sand at a depth from 4560 to 4565 ft in **Harper** County. The 1-5 Williams - Misak OWWO (API 15-077-21652), spotted in the SE SE SE of section 5- T35s- R5W, establishes a new source of supply within the Willtex Northwest field - a field discovered by M & M Exploration established in October, 2008. The field previously only produced oil and gas from the Mississippian and Simpson Sand formations. Operator originally drilled and completed the 1-5 Williams - Misak in June, 2009 for 22 barrels of oil and 65 Mcf gas daily from Mississippian perforations between 4976 to 5084 ft. Total depth is 5300 ft. Field area is located about three miles south of Bluff City, Kansas.

Memorial — Don Slawson



With the passing of Don Slawson on July 7th, the Kansas Oil Industry lost its most prominent member. Don was a lifelong resident of the state. He graduated from East High School and then attended the University of Kansas where he was a member of Delta Upsilon fraternity. Don graduated from KU in 1955 with a major in Political Science and a minor in Geology. In that year he married his college sweetheart Judy Garver. To this union were born three children, Steve of Oklahoma City, Craig of Denver and Todd also of Denver. He is also survived by 5 grandchildren.

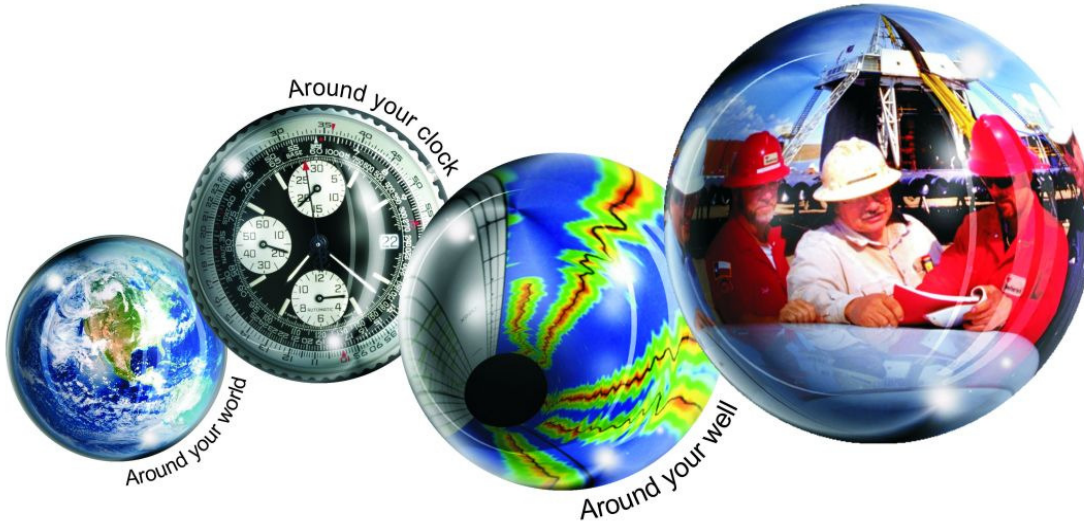
In 1957, Don founded Slawson Oil Company, a company that now has over 950 employees and operates in Kansas, Colorado, Oklahoma, Texas and North Dakota. It has been very prominent in the development of the Bakken Shale production and helped to place North Dakota currently as the third largest daily producer in the United States.

Among Don's petroleum related activities were two terms on the National Petroleum Council. Don has been very prominent in educational activities in the state of Kansas including two terms on the Kansas Board of Regents and was its chairman from 1987 to 1993.

Memorials have been established with the Sedgwick County Zoo Elephant Exhibit, 5555W. Zoo Blvd., Wichita, KS. 67212 and Alzheimer's Association, Central and Western Kansas Chapter, 1820 E. Douglas, Wichita, KS., 67214

Kansas Geological Foundation Memorials

KGS Member	Date Deceased	Memorial Est.	KGS Member	Date Deceased	Memorial Est.
Dan Bowles	09/89	1990	Edward B. Donnelly	08/01	2001
John Brewer	10/89	1990	Richard P. Nixon	02/02	2002
George Bruce	08/89	1990	Robert W. Frensley	12/01	2002
Robert Gebhart	01/90	1990	Gerald W. Zorger	01/02	2002
Ray Anderson, Jr.	11/90	1990	Don L. Calvin	03/02	2002
Harold McNeil	03/91	1991	Claud Sheats	02/02	2002
Millard W. Smith	08/91	1991	Merle Britting	2002	2002
Clinton Engstrand	09/91	1991	Harold Trapp	11/02	2002
M.F. "Ted" Bear	10/91	1991	Donald M. Brown	11/02	2003
James & Kathryn Gould	11/91	1991	Elwyn Nagel	03/03	2003
E. Gail Carpenter	06/91	1993	Robert Noll	09/03	2003
Benton Brooks	09/92	1992	Benny Singleton	09/03	2003
Robert C. Armstrong	01/93	1993	Jay Dirks	2003	2003
Nancy Lorenz	02/93	1993	J. Mark Richardson	02/04	2004
Norman R. Stewart	07/93	1993	John "Jack" Barwick	02/01	2004
Robert W. Watchous	12/93	1993	Richard Roby	03/04	2004
J. George Klein	07/94	1994	Ruth Bell Steinberg	2004	2004
Harold C.J. Terhune	01/95	1995	Gordon Keen	03/04	2004
Carl Todd	01/95	1995	Lloyd Tarrant	05/04	2004
Don R. Pate	03/95	1995	Robert J. "Rob" Dietterich	08/96	2004
R. James Gear	05/95	1995	Mervyn Mace	12/04	2004
Vernon Hess	06/95	1995	Donald Hoy Smith	04/05	2005
E. K. Edmiston	06/95	1995	Richard M. Foley	06/05	2005
Jack Rine	07/95	1995	Wayne Brinegar	06/05	2005
Lee Cornell	08/95	1995	Charles B. Moore	09/96	2005
John Graves	10/95	1995	Jack Heathman	05/06	2006
Wilson Rains	10/95	1995	Charles Kaiser	09/06	2006
Heber Beardmore, Jr.	09/96	1996	Rod Sweetman	08/06	2006
Elmer "Lucky" Opfer	12/96	1996	Karl Becker	10/06	2006
Raymond M. Goodin	01/97	1997	Frank Hamlin	10/06	2006
Donald F. Moore	10/92	1997	Marvin Douglas	12/06	2006
Gerald J. Kathol	03/97	1997	Robert W. Hammond	04/07	2007
James D. Davies	08/88	1997	Eldon Frazey	04/07	2007
R. Kenneth Smith	04/97	1997	Pete Amstutz	05/07	2007
Robert L. Dilts	05/97	1997	Charles Spradlin	05/07	2007
Delmer L. Powers	06/72	1997	Donald R. "Bob" Douglass	09/07	2007
Gene Falkowski	11/97	1997	Vincent Hiesch	11/07	2007
Arthur (Bill) Jacques	01/98	1998	Glen C. Thrasher	03/08	2008
Bus Woods	01/98	1998	Peg Walters	06/08	2008
Frank M. Brooks	03/98	1998	Theodore "Ted" Sandberg	07/08	2008
Robert F. Walters	04/98	1998	James Ralstin	11/08	2008
Stephen Powell	04/98	1998	Earl Brandt	04/09	2009
Deane Jirrels	05/98	1998	Walter DeLozier	05/09	2009
William G. Iversen	07/98	1998	Don D. Strong	01/10	2010
Ann E. Watchous	08/98	1998	John Stone	02/10	2010
W.R. "Bill" Murfin	09/98	1998	Craig Caulk	03/10	2010
Donald L. Hellar	11/98	1998	Joseph E. Moreland, Jr.	03/10	2010
Joseph E. Rakaskas	01/99	1999	Gene Garmon	03/10	2010
Charles W. Steincamp	02/99	1999	James F. Dilts	05/10	2010
Robert and Betty Glover	10/96	1998	Jerry Pike	05/10	2010
Howard E. Schwerdtfeger	11/98	1999	Donald Hollar	06/10	2010
W. W. "Brick" Wakefield	03/99	1999	Delbert Costa	08/10	2010
V. Richard Hoover	01/00	2000	John Tanner	08/10	2010
Warren E. Tomlinson	01/00	2000	William (Bill) Owen	09/10	2010
James A. Morris	01/00	2000	Harold (Hal) Brown	10/10	2010
Eric H. Jager	03/00	2000	Edmund G. Lorenz	11/10	2010
Kenneth W. Johnson	03/00	2000	Thomas E. Black	05/11	2011
Dean C. Schaake	03/00	2000	Wayne E. Walcher	07/11	2011
Fred S. Lillibridge	05/00	2000	Henry F. Filson	07/11	2011
Jerry A. Langrehr	07/00	2000	Thomas Ray	07/11	2011
Clark A. Roach	07/00	2000	Edgar E. Smith	09/11	2012
Floyd W. "Bud" Mallonee	10/00	2000	Marilyn Messinger	06/13	2013
Ralph W. Ruuwe	09/00	2000	Micheal Mitchell	9/13	2013
Robert L. Slamal	02/01	2001	Orvie Howell	11/13	2013
Jerold E. Jespersion	06/01	2001	James Thompson	11/13	2013
William A. Sladek	06/01	2001	Dick Rowland	09/13	2014
Harlan B. Dixon	06/01	2001			



All Around You

**Weatherford has always
been driven by your needs.**

Now, with the addition of Precision Energy Services we're continuing to build a world of skills, services and technologies that revolve – and evolve – around you.

The result?

An expanded global network of 25,000 people, 730 service bases and 87 manufacturing facilities in 100 countries.

This increased local knowledge and service is there to support you anywhere, anytime. From midday in the Middle East to midnight in the middle of nowhere.

And with greatly strengthened capabilities in the critical evaluation skills of directional drilling and wireline logging, we can do even more to improve the profitability and productivity of your wells.

To see how our sphere of services can work for you, visit www.weatherford.com or contact either your Weatherford or former Precision Energy Services representative.


Drilling | Evaluation | Completion | Production | Intervention

© 2006 Weatherford International Ltd. All rights reserved. Incorporates proprietary and patented Weatherford technology.

CHANGE SERVICE REQUESTED

KGS BULLETIN
 July-August 2014

July 2014

Sun	Mon	Tue	Wed	Thu	Fri	Sat
		1	2	3	4 Library Closed 	5
6	7	8	9	10	11	12
13	14	15	16	17	18	19
20	21	22	23	24	25	26
27	28	29	30	31		

August 2014

Sun	Mon	Tue	Wed	Thu	Fri	Sat
					1	2
3	4	5	6	7	8	9
10	11	12	13	14	15 KGS Picnic	16
17	18	19	20	21	22	23
KIOGA						
24	25	26	27	28	29	30
31						