



Established 1925

KANSAS GEOLOGICAL SOCIETY

BULLETIN

Volume 89 Number 6

November—December 2014

IN THIS ISSUE

*Memorial:
Al Stude - pg. 18*

*Time To Vote!
Meet The Candidates
Page 10*



Robert F. Walters Digital Library

The most complete source for Kansas data

Day or Night
You can get to the data as you need it

www.kgslibrary.com

To Join: call 316-265-8676

The screenshot displays the Robert F. Walters Digital Library website in a Mozilla Firefox browser window. The interface is divided into several sections:

- Search Wells:** A search bar with fields for Section, API Number, County, Operator, Well No., and Depth. There are also checkboxes for "Show me" and "Digital-View".
- Well Records:** A table listing well records with columns for Well No., Spot, Location, H.D., E.W., Spud, Completion, Depth, B.T.S., B.D.F., B.O.L., and Status. The table contains several rows of data.
- Completion Card - IOG:** A section for completion cards, including a "Drill Stem Test" and a "Completion Card" with fields for "Contr.", "PICKRELL", "ZC47", and "P. 205088 Comm. T".
- Preview:** A preview of a well log for "BARBARA OIL CO." showing well data, completion data, and a "LATEROLOG SURVEY" section.

Table of Contents

Features

Memorial.....18

Meet the Candidates10

Departments & Columns:

KGS Tech Talks4

President’s Letter7

Advertiser’s Directory8

From the Manager..... 9

KGS Board Minutes10

Professional Directory19 & 20

Exploration Highlights24 & 25

Kansas Geological Foundation Memorials.....26

ON THE COVER:

Please see page 10 and review the candidates running for Society Board of Directors. Thank you to all who are running for office—taking some time to give back to the Society.

CALL FOR PAPERS

The Kansas Geological Society Bulletin, which is published bimonthly both in hard-copy and electronic format, seeks short papers dealing with any aspect of Kansas geology, including petroleum geology, studies of producing oil or gas fields, and outcrop or conceptual studies. Maximum printed length of papers is 5 pages as they appear in the Bulletin, including text, references, figures and/or tables, and figure/table captions. Inquiries regarding manuscripts should be sent to Rebecca Radford, manager@kgslibrary.com or mailed to 212 N. Market, Ste. 100, Wichita, KS 67202. Specific guidelines for manuscript submission appear in each issue of the Bulletin, which can also be accessed on-line at the Kansas Geological Society web site at <http://www.kgslibrary.com>

SOCIETY Technical Meetings

2014 Technical Talks

- Nov. 19— “*Lower Crustal Xenoliths from the Upper Michigan Peninsula: Evidence for Modification of an Archean Craton by Proterozoic Orogenesis and Plume Magmatism*” - Pamela Kempton, Kansas State University Geology Dept. Chair
- Dec. 2— “*Earthquakes in the southern midcontinent: What we know and what we need to know- Current research at KU and the Kansas Geological Survey*” - Lynn Watney, Tandis Bidgoli, & Eugene Holubnyak
- Dec. 16— “*On the Rocky road: a geology travel log*” - Catherine Rocky

For More Information or suggestions of speakers please contact Dave Clothier: dave@mccoypetroleum.com

Note: For those geologists who need 30 points to renew their licenses, there will be a sign-in sheet at each presentation and also a certificate of attendance.

NOTICE!!!!

*Tech Talks in New Location
We have moved our technical
meetings to the same building the
Library is in: 212 N. Market—4th floor
In the Wisdom Center*



Please remember to check the website for the most up to date information on Technical Talks
<http://www.kgslibrary.com/techtalks.cfm>

KANSAS GEOLOGICAL SOCIETY



BOARD OF DIRECTORS

PRESIDENT

Brian Fisher

PRESIDENT-ELECT

Frank Mize

SECRETARY

Leah Kasten

TREASURER

Paul Ramondetta

DIRECTORS

Dave Clothier

Tim Hellman

Frank Mize

ADVISORS

Tom Hansen

Larry Richardson

COMMITTEE CHAIRMEN

Advertising

Kent Scribner

Advisory

Tom Hansen

Larry Richardson

Annual Banquet

Bob Bayer

Budget Committee

Paul Ramondetta

Bulletin

Rebecca Radford

Continuing Education

Robert Cowdery

Distinguished Awards

Dave Clothier

Environmental

Kent Matson

Field Trip

Larry Skelton

Fishing Tournament

Randy Teter

Future Plans

Chuck Brewer

Golf

David Barker

Historian

Larry Skelton

Investment

Paul Ramondetta

Library

Roger Martin

Ted Jochems

Membership

Larry Friend

Nomenclature

John H. Morrison, III

Picnic

Wes Hansen

Public Relations

Robert Cowdery

Shooting Tournament

Larry Richardson

Technical Program

Dave Clothier

Ticket Sales

Bill Shepherd

A.A.P.G. DELEGATES

Ernie Morrison
2018

Douglas Davis
2018

BULLETIN STAFF

EDITOR

Rebecca Radford—Interim (316) 265-8676

ADVERTISING

Kent Scribner

Stelbar Oil Corp. (316) 264-8378

PROFILES/MEMORIALS

Robert D. Cowdery

Consultant (316) 267-9030

EXPLORATION HIGHLIGHTS

John H. Morrison, III

Independent O&G (316) 263-8281

STATE SURVEY

Rex Buchanan

KS Geological Survey (785) 864-3965

SOCIETY NEWS

KGS Library

(316) 265-8676

EDITOR EMERITUS

Wes Hansen

(316) 263-7313

Larry Richardson

(316) 262-8427

K.G.S. LIBRARY

PHONE 316-265-8676 FAX 316-265-1013

email: frontdesk@kgslibrary.com or

Web: www.kgslibrary.com

LIBRARY MANAGER

Rebecca Radford 265-8676

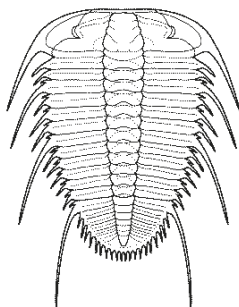
manager@kgslibrary.com

The KGS *Bulletin* is published bi-monthly by the Kansas Geological Society, with offices at 212 North Market, Wichita, Kansas 67202 Copyright 2014, The Kansas Geological Society. The purpose of the *Bulletin* is to keep members informed of the activities of the Society and to encourage the exchange and dissemination of technical information related to the Geological profession. Subscription to the *Bulletin* is by membership in the Kansas Geological Society. Limited permission is hereby given by the KGS to photocopy any material appearing in the KGS *BULLETIN* for the non-commercial purpose of scientific or educational advancement. The KGS, a scientific society, neither adopts nor supports positions of advocacy, we provide this and other forums for the presentation of diverse opinions and positions. Opinions presented in these publications do not reflect official positions of the Society.



**Twenty-two Trucks Serving
Kansas—Colorado—Texas—Nebraska—Illinois**

**DST's
Back Pressure testing (G1 & G2)
Slick line services using the same Weatherford
Electronic Pressure Gauges used on DST's**



1-800-728-5369

FAX 1-785-625-5620

**www.trilobitetesting.com
trilobite@eaglecom.net**

SHOPS LOCATED IN:

**Hays, KS
Scott City, KS
Pratt, KS
Hugoton, KS
Oberlin, KS
Clay City, IL**

CAN YOU NAME THE CRITTER?

Sponsored by Trilobite Testing, Inc.

Is your paleo up to date?

If you know the name of the trilobite,
submit your guess via e-mail to
manager@kgslibrary.com

Remember that *Trilobite Testing* is
sponsoring your efforts, so be sure to thank
Paul Simpson the next time you see him.

**Bulletin committee members and PhD's in
Paleontology are prohibited from entering.**



Watch for your ballots in the mail

**Society ballots are due back by
December 1st**

VOTE

**Kansas Geological Foundation
ballots are due back by
December 15th**

President's Letter

Dear Members,

It's that time of year for me to write the finale KGS presidential letter for the bulletin. The year has gone by so quickly and the KGS Board and the Kansas oil field has been involved in several issues that have the potential to seriously impact the economics of our business and our great state of Kansas. These range from the public perception of possible induced seismicity from oil field activity and the habitat of the Lesser Prairie Chicken. In April, several members of our society provided comments to an Induced Seismicity State Task Force Meeting held here in Wichita. Also the KGS board sent out a letter requesting that the Governor have the State of Kansas take the lead in the protection and regulation of the Lesser Prairie Chicken.




The KGS Board has also negotiated the addition of more library space and remodeled the new areas into office. Rhonda, our receptionist, has been relocated and we have now a new entrance onto Market Street. The KGS board, after a lot of research and discussion, took a portion of our assets and diversified them conservatively into the stock market to achieve a higher yield. The funds are still liquid and still available while future KGS Boards will consider various options regarding the future direction and goals of the library. I also want to thank Dave Clothier and his committee who have worked hard to come with a great list of excellent candidates for the upcoming fall KGS election.

Since my last letter I went fishing in Pratt in the Annual KGS Tournament and had a great time – many thanks to Randy Teter, John Christensen and Jim Hall for organizing and running this great event. I also participated in the Fall KGS Annual Shooting Tournament - as always in my mind I can shoot a little better than what I managed to score but my excuse was the Kansas wind that day! Everyone had a great time enjoying the food and fellowship for this event. I want to thank Larry Richardson and Kent Crisler and others for running this great event for our society.

I certainly enjoyed being your president and working with the KGS Board. It has been an honor for me to serve the society and to be part of this great organization. I am looking forward to our Annual Banquet on January 30, 2015 and hope to see you there.


Respectively submitted,
Brian G. Fisher - President 2014



KANSAS STATE UNIVERSITY

GEOLOGY

DEPARTMENT



GRADUATE EDUCATION for active professionals

<p><i>Through:</i></p> <p>Workshops</p> <p>Field Trips</p> <p>Distance Education</p>	<p><i>Leading to:</i></p> <p>Academic credits</p> <p>Certificates (pending)</p> <p>M.S. degree</p>
--	--

With specializations in:

Petroleum Geology

Groundwater

Exploration Geophysics

Environmental Geochemistry

Information:

KSU Continuing Education: www.dce.ksu.edu

KSU Geology Department: www.ksu.edu/geology

KSU Graduate School: www.ksu.edu/grad

or e-mail George Clark, interim dept. head: [<grc@ksu.edu>](mailto:grc@ksu.edu)

ADVERTISER'S DIRECTORY

	<i>page</i>
Allied Cementing Company, Inc	23
American Energies Corp. Nitrogen Rejection	13
Breckenridge Exploration Company	15
Duke Drilling	23
GeoCare Services AAPG	17
GeoSteering	14
Global Geophysical Services, Inc.	15
Kansas Geological Foundation	26
Kansas State University	8
Lockhart Geophysical	23
Lone Star Geophysical Surveys	16
MJ Systems	21
MBC Well logging	23
Murfin Drilling Company, Inc	23
Neuralog	15
PARAGON Geophysical Services, Inc	13
Pratt Well Service	15
Professional Directory	19-20
Sterling Seismic Services	13
Sunrise Oilfield Supply	23
Tomcat Drilling	23
Trilobite Testing	6
Walters Digital Library	2
Weatherford	27
Well Enhancement Services	14

ADVERTISER'S RATES: 2014

Full Page	B&W	Color
6 issues	\$2,000	\$2,500
3 issues	\$1,080	\$1,325
1 issue	\$480	\$525
1/2 Page		
6 issues	\$1,000	\$1,500
3 issues	\$540	\$825
1 issue	\$225	\$350
1/4 Page		
6 issues	\$600	\$900
3 issues	\$325	\$525
1 issue	\$150	\$250
1/8 Page		
6 issues	\$300	\$500
3 issues	\$175	\$325
1 issue	\$75	\$185
Professional Ad (Business Card)		
6 issues	\$90	\$180

For one-time ads, call Rebecca at 316-265-8676

Log in to
Walters Digital Library
At
www.kgslibrary.com

Log in as our guest
and see the Society's Database
A convenient way to see what
you might want to order!
Call or email your order to:
316-265-8676
frontdesk@kgslibrary.com

From The Manager

Dear Members,

Another year is quickly wrapping up and your library has been busy with orders. We continue to add Eastern Kansas logs and plotted geos to the database and the Walters Digital Library. You can check for updates on this effort on the home page of our web page—right hand column.

The construction is finally over in the library and we are loving the extra space. If you haven't seen it, stop in and check it out.

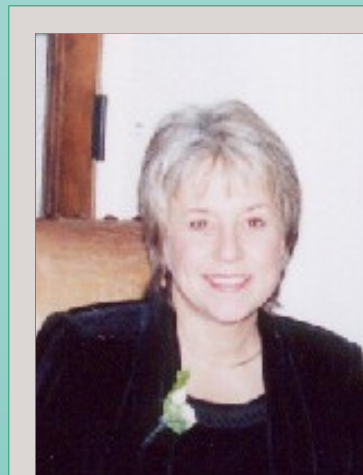
We had a great showing at the Annual Clay shoot out at Lynbrooke Sporting clays this October. And I believe we had a record number of fishermen at the Fishing Tournament also. Thank you to all who supported these events. Thank you to **Randy Teter & Jon Christensen** for organizing the Fishing Tournament and to **Larry Richardson & Kent Crisler** for the Shooting Tournament!

Our next event will be the **Annual Banquet on Friday, January 30th**. We will be honoring **Bob O'Dell** as honorary member. Please get the date reserved on your calendars.

I would like to thank **Brian Fisher and the 2014 Board of Directors** for all of their guidance and support of the library this past year. I also want to thank our great staff for all their hard work. The staff and I would like to have an **Open House in December** so please plan to stop by the library on **Friday, December 19th** for some holiday cheer!

Happy Holidays to all!

Respectfully submitted,
Rebecca Radford
Manager



Holiday Hours for the KGS Library

KGS Library Open House December 19th
11AM-Closing

Closed November 27 & 28—Thanksgiving

Closed December 25 & 26—Christmas

Closed January 1 & 2—New Year's



Let Us Print Your Geo Reports
And Save Your Time For Finding More Oil & Gas

Top Quality Color Printing For Our Membership

Email your files to: kgsorders@gmail.com

Candidates For 2015 Office

PRESIDENT-ELECT



Photo by A.J.

Timothy Hellman

Education

B.A. Geology, 1980 Wichita State University
Post Graduate Classes—Wichita State

Professional Experience

Lotus Exploration Company and Lotus Operating Company, LLC , 1997 to present
Raymond Oil Co. Inc., Wichita, Kansas. 1976-1997
Exploration Manager from 1980 to 1997
Staff geologist 1976-1980

Professional Affiliations:

AAPG – Member, 1978 - present
AAPG-Division of Professional Affairs, 1988-present

KGS Board and Committees:

KGS Board of Directors: 1991-1992
KGS Board of Directors: 2012-2013, 2014
Kansas Geological Foundation – Charter member
Kansas Geological Foundation Director- 2006-09
Secretary – 2008-09
Kansas Nomenclature Committee – 1989-1993
KIOGA-Board of Directors 1997 to Present
Petroleum Club of Wichita – Board of Directors, 2004-2011
Petroleum Club Secretary 2004-07
Petroleum Club President – 2008-present

Certifications:

AAPG-DPA, Certified Petroleum Geologist - CPG# 3978



Paul Ramondetta

Education:

B.S. Geology, Brooklyn College, 1971
Masters Geology, Brooklyn College, 1975
Post graduate classes at University of Houston, Rice University, and University of Texas at Austin, 1975-1981.

Professional Experience:

Geology Lab Instructor, Brooklyn College, 1972-1974
Seismic Processor, Western Geophysical in Houston, 1974-1976
Geology and Physics Instructor, Houston Community College, 1976-1979
Consulting Geologist in Houston, 1976-1979
Research Geologist, Bureau of Economic Geology in Austin, 1979-1981
Petroleum Geologist & Supervisor, Cities Service/Oxy, Wichita, OK City, Bakersfield, Tulsa, Doha; 1981-1998
Exploration & Exploitation Manager, Vess Oil Corp, Wichita, 1998 to present (2012).

KGS Board and Committees:

KGS Board, Secretary/Treasurer 2013-2014

Professional Affiliations:

AAPG, current
Kansas Geological Society, current
Many past affiliations.

SECRETARY—TREASURER 2015-2016



Charles Brewer

Education:

B.S. Geology, Fort Hays State, 1982

Professional Experience:

President/Principal Geologist, Geotechnical Services
1989-Present

Emergency Response Coordinator, Nebraska Dept. of
Environmental Quality, 1989

Consulting Geologist, 1987-1988

Staff Geologist, Hinkle Oil, 1985-1987

Geologist, Raymond Goodin Trust, 1983-1985

Field Technician, Geometrics, Inc., 1977-1983

Professional Affiliations:

Kansas Geological Society

Kansas Geological Foundation

KWBA

NWGA, Licensed in Kansas, Missouri, Nebraska,
Texas

KGS Board and Committees:

KGS Board President, 2006

KGS Board—Director 2011-2012

Chairman—Map Committee

Chairman—Environmental Committee



Ryan Dixon

Education:

B.S. Geology, Wichita State University, 2007

Professional Experience:

Geologist, Dixon Energy Inc., 2007-Present

Geotechnician—2004-2007

Professional Affiliations:

Kansas Geological Society

AAPG

SEPM

GSA

KGS Board and Committees:

KGS Board—Director 2011-2012

Bob Slamal Memorial Type Log Committee

Future Plans Committee

MEMBER AT LARGE—DIRECTOR 2015-2016



Paul Gunzelman

Education:

West Texas State University, B.S. Geology 1978
Wichita State University, Post Graduate Studies 1986-1989

Professional Experience:

Pendleton Land and Exploration Co., 1979 - 1980
Brandt Drilling Company, Inc., 1980 - 1981
Consulting Geologist, 1981 - 1984
Mull Drilling Company, Inc., 1984 - 1994
Canyon Energy, Inc., 1994 - 1997
Resource Management Group, Inc., 1997 - Present

Professional Affiliations:

AAPG
Kansas Geological Foundation
Kansas Geological Society
KIOGA

KGS Board and Committees:

Board of Directors 1990 - 1991, 1993-1995
KGS President, 1994
Advisor to the Board :1998, 2000, 2009
Presidential Citation 1989
Outstanding Service Award 1991 & 1995
Honorary Member 2010
Library Committee, Bulletin Committee,
Technical Programs Committee, Future Plans Committee,
Honors & Awards Committee

Kansas Geological Foundation Board:

Board of Directors (ex officio) 1993 - 1994, 1999 – 2001
2008 - 2010, President 2001

AAPG

House of Delegates 1991-1997
Mid-continent Section Council 1991 - 1994
Division of Professional Affairs – Advisor 1995 – 1998
Licensed Geologist - Kansas Board of Technical Professions



Ganganath “G” Koralegedara

Education:

M.S. Earth, Environment and Physical Sciences,
Wichita State University, 2009
B.S. Civil Engineering, University Of Peradeniya,
Sri Lanka, 2000

Professional Experience:

Geologist / Geophysicist, Berexco LLC.
2007 – Current
Wichita State University, Teaching Assistant,
2006 - 2008
Civil Engineer, National Water Supply & Drainage
Board – Sri Lanka, 2001-2004
Civil Engineer, Tropical Waste Water Engineers, Sri
Lanka, 1998 - 2001

Professional Affiliations:

Licensed Professional Geologist – Kansas
(License #836)
Member AAPG Publication Pipeline Committee
(PPC) March-2011
KSGS officer nominee 2010
Geophysical Society of Kansas 2007
American Association of Petroleum Geologists
(AAPG) 2006
Kansas Geological Society (KSGS) 2006
Geological Society of America (GSA) 2006
Society of Sedimentary Geology (SEPM) 2006



Providing Quality Seismic Since 1993

Visit our website at
www.parangogeo.com



3500 N. Rock Rd., Bldg. 800, Wichita, KS 67226 316-636-5552
paragon@parangogeo.com

WANTED



LOW BTU GAS to Buy or Treat

www.NitrogenRejectionUnit.com



American Energies Corporation
 316-263-5785

Experience, Integrity, Innovation...



SEISMIC SERVICES, LTD.

www.sterlingseismic.com

**Renegade Seismic Studio Refraction Statics
 Z-White Spectral Enhancement
 Tsunami Pre-Stack Time Migration**

Projects from one square mile "Postage Stamp" 3Ds to the 1,100 square mile nine 3D merge through PSTM we completed in 2006, no project is too small or too big. All projects are given the same attention to detail that we have become known for.

**Structural or stratigraphic, we've got the experience
 to provide you with a superior dataset.**

303-347-9011



WOULD YOU LIKE TO INCREASE YOUR PRODUCTION AT A FRACTION OF THE COST OF HORIZONTAL DRILLING?



Well Enhancement Services, LLC is jetting laterals utilizing new technology and coiled tubing. We now have the ability to place hundreds of gallons of acid hundreds of feet away from the well bore. This allows us to not only enhance existing production but to produce reserves previously unreachable. It has established itself by repeatedly increasing production in both new and existing wells. Contact us for more information, questions or to schedule your next well with **WES**.



“Tap into success.....with WES”

Please Contact Us:

Phone: (785) 625-5155

Fax: (785) 625-4151

Field: (785) 259-4638

wesofhays@hotmail.com
Box 87, Schoenchen, KS 67667

www.**GeoSteering**.com

281-573-0500
info@geosteering.com

**Free introductory consultation
with modeling:
let us demonstrate whether
images or propagation resistivity
could add value to your well.**

Personnel with degrees & 20+ years of oilfield experience

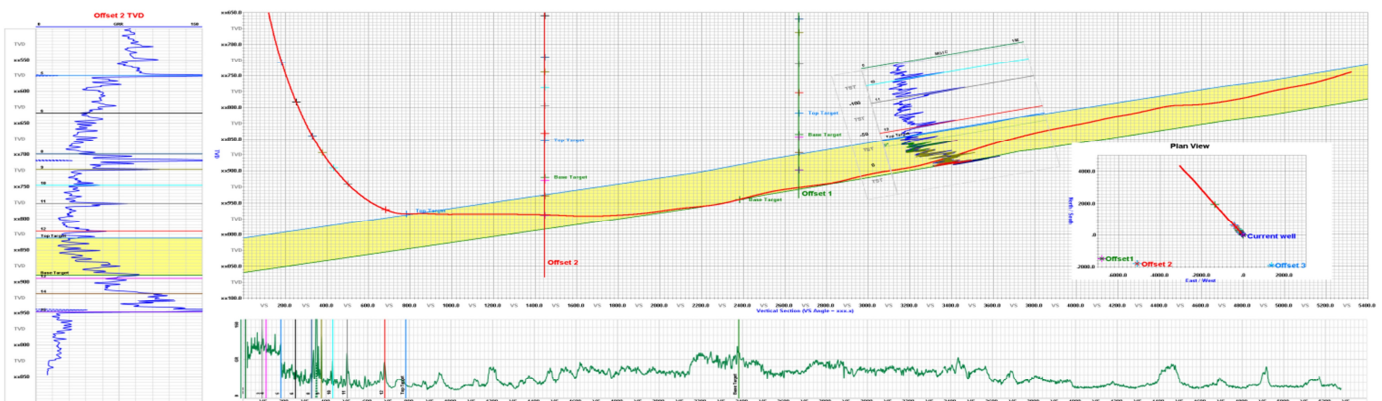
Proprietary software

TST interpretation for GR only jobs

**Image displays / interpretation for jobs with azimuthal GR,
resistivity or density**

**Resistivity modelling / interpretation for jobs with LWD
propagation resistivity**

Real-time (always)





Kenneth C. Gates
President

Kevin C. Gates
Vice President

1-800-660-7974
Fax: 620-672-5902

Member KIOGA / AESC

Since 1946

P.O. Box 847
Pratt, Kansas 67124

Equipment yard & field office:
1 3/4 miles North on Highway K-61 from 54 & K-61 Junction

• Experienced Crews • Rod & Tubing Service • Workover & Completions • Swab Tanks
• Pole Masts-Single and Double Derricks • Air Foam Unit • Monitor & Water Well Drilling
• Reverse Circulating Pump & Power Swivel Equipment • Statewide Oilfield Hauling
• Environmental Cleanup • Vacuum Trucks/Water Trucks • Dirtwork-Dozers, Grader, Backhoe

Hydrovac Excavation Service



• Cleaning cattle guards
• Mud tank cleaning
• Potholing • Trenching
• Pipeline Crossings

www.prattwell.com



Neuralog

Turning Paper Into Petroleum

Bryan Mills
Regional Sales Manager

Solutions for Today's Geoscientists

- Scan, Print & Digitize - Logs & Maps
- Geological Interpretation
- Master E&P Data Management

1.281.240.2525

bmills@neuralog.com • www.neuralog.com



**BRECKENRIDGE
EXPLORATION
COMPANY, INC**

SEISMIC ACQUISITION

Check us out at www.breckex.com

Breckenridge Exploration Co., Inc.
Highway 180 E
P.O. Box 789
Breckenridge, TX 76424
Bus: (254) 559-7566

Denver Colorado Office
600 17th Street, Ste. 2800 S
Denver, Colorado 80202-5428
Bus: (303) 563-5301
Mob: (254) 559-0587

Sensible Seismic Acquisition in the Mid-Continent and the Rockies



UNLEASH AMBIENT!



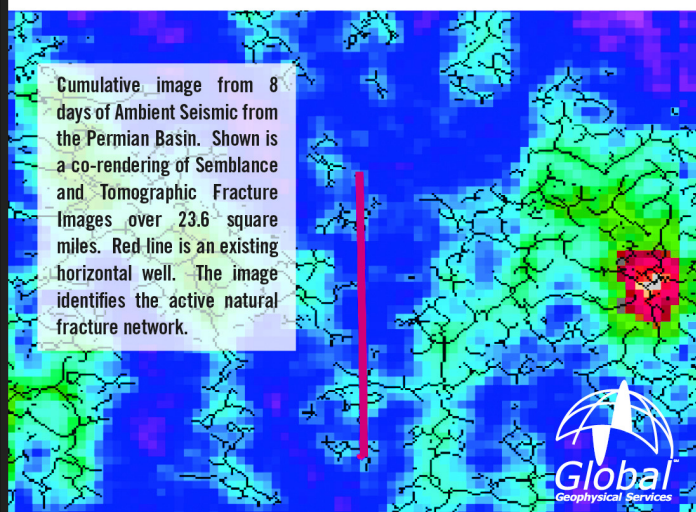
AGGRESSIVE PASSIVE SEISMIC

Ambient Seismic captures natural, continuous background seismicity and can be processed to reveal active natural fracture systems and stress regimes. The data can be collected during conventional 3D seismic surveys. Using patented processing techniques developed for microseismic monitoring, we produce highly sensitive images of cumulative seismic activity over extended time periods to identify active fracture areas, volumes and pathways.

Our objective is to help oil and gas companies identify and characterize prospectivity and productivity, reduce risk, optimize well completion techniques and monitor changes in hydrocarbon reservoirs.

Contact AMBIENT@globalgeophysical.com

Download the White Paper at:
www.globalgeophysical.com/Ambient



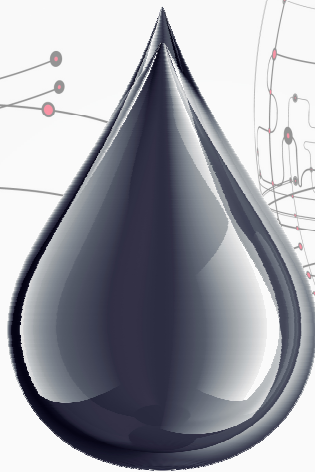
Global Geophysical Services, Inc.
tel +1 713-972-9200 www.globalgeophysical.com



LSGS

LoneStar Geophysical Surveys

It's Real Simple. It's Real Effective.



Locating every last drop.



Superior Seismic Acquisition System



Data Recording 2D, 3D, 4D & VSP



AHV-IV™ Commander 364



Permitting Services



HSE Management System



Front-End Services



Shot Hole Drilling



Brush Clearing



Chainsaw Crews



Heliportable



Submit a bid request online:

www.lstargeo.com

441 So. Fretz Avenue Edmond, Oklahoma 73003 (O) 405.726.8626 (F) 405.285.8521
lsgs1@lstargeo.com



Security for AAPG Members
& Their Families
Through Group Insurance

Life
Health
Dental
Disability
Auto and Homeowner
Supplemental Plans

AAPG's
GeoCare Benefits Insurance Program
P. O. Box 9159
Phoenix, AZ 85068-9159
800-337-3140
E-mail: geocarebenefits@agia.com
www.geocarebenefits.com

Kansas Geological Foundation Video / DVD Collection

The KGF has an extensive collection of
videos available for check-out at no
charge.

Only pay for shipping back.

These are ideal for classroom or
general public viewing.

See the web for titles & descriptions
www.kgfoundation.org

Call 316-265-8676
Ask for Janice to check out videos

*The KGS Library is pleased to
announce a new service*

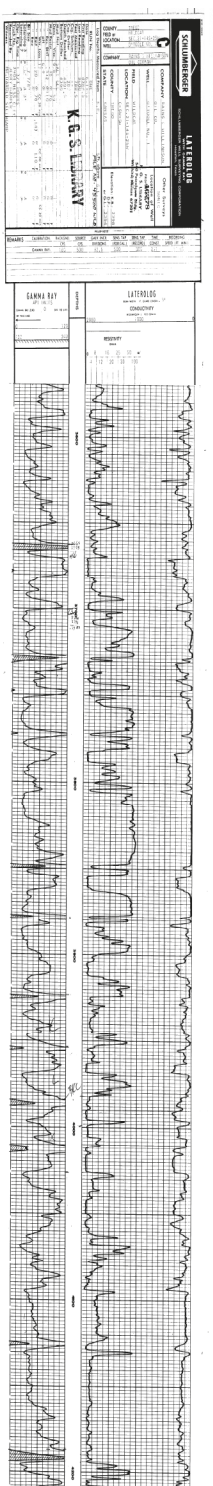
Creating
LAS files
from our logs
or yours

**\$20.00 per
curve!!**

Quick
turn-around

Send us your log file
or tell us which of
ours you would like
converted.

316-256-8676



The Kansas Geological Society maintains its ownership and
copyright when converting library log files to LAS

Memorial - Al Stude



Longtime KGS member, Al Stude, passed away on October 7, 2014. Over the years, Al was one of the premier wellsite geologists in this area. He was born in July 1924 on a farm north of Kinsley. His Dad was a farmer, who also taught math and science at the high school level, so the family moved quite often. Al became familiar with geology at an early age from field trips that his father conducted for his students. On one excursion to the field they found a the fossil remains of a teleostean fish that was 15 feet, 4 inches long. This specimen now hangs in the Peabody Museum at Yale University.

Following college graduation in 1954, Al joined Vickers Oil Co. where he worked with Lyle Thomas and in 1956 he joined Karl Becker at Sierra Petroleum. In his career as a wellsite geologist, Al watched many wells of wells for Clinton, Glickman, Sierra Barnett, Kewanee, Petroleum, Inc. and TGT.

Al was preceded in death by his daughter, Patricia Magers; and sister Marie Stude. He is survived by his son, Bob Stude of Bel Aire; 2 sisters and his grandson Christopher. A private family services was held at Resthaven Mortuary.

The Society Wishes To Thank The Following For Supporting The Annual Clay Shoot

Allied Cementing Co., Inc.
Andy's Mud & Chemical
Basic Energy Services, LP
Beredco Drilling
Breckenridge Geophysical
Brian Fisher
Buckeye Supply
Central Kansas Surveying & Mapping
Coffeyville Resources
COVEY, The Well Watchers
Diamond Testing
Duke Drilling
Eagle Creek Corporation
Edwards Consulting
Egging Roustabout Service
Empire Energy
Grand Mesa Operating Co.
Gressel Oilfield Service, Inc.
Hedke-Saenger Geoscience
High Sierra Energy
The Independent
Jayhawk Oil Field Supply
Lockhart Geophysical
Log Tech, Inc. of Kansas
Lotus Exploration Co, Inc.
Max Lovely
Roger L. Martin
Maverick Drilling
MBC Well Logging & Leasing

McDonald Tank
McLeod Exploration
Ernie & Pat Morrison
Mud-Co/Service Mud, Inc.
Mull Drilling Co., Inc.
Murfin Drilling Co., Inc.
Nabors Well Service
Nalco Chemical
National Oilwell
NCRA
Richard Neidens
Stan Nelson
Paragon LLC
Pioneer Energy Services
Pratt Well Service
Raymond Oil Company
Larry Richardson
Don Shawver
Summit Geophysical
Sunrise Oilfield Supply
Sweetman Investments, LLC
Theis Dozer Service
Tidelands Geophysical
Trilobite Testing, LLC
Thoroughbred Associates
Trans Pacific Oil Corp.
Tucker Wireline
Val Energy, Inc.

PROFESSIONAL DIRECTORY

Kirk Rundle **Consulting Geophysicist**

3D Seismic Design, Acquisition to Processing QC.,
Interpretation and Analysis, Subsurface Integration
7340 W. 21st. N., Ste. 100
Wichita, Kansas 67205

Office: 316-721-1421 Fax: 316-721-1843
Email: kirk@rundlegeo.com

Blue Ribbon Drilling, LLC

PO Box 279, Dewey, OK 74029

Phone and Fax: 918-534-2322
John's Cell Phone: 918-440-9639
Larry's Cell Phone: 918-440-9638
Jeff's Cell Phone: 918-440-9647
Email: johnroutree@bratco-operating.com



Banks Resources

Scott Banks
Petroleum Geologist
banksb@aol.com
Cell: 316.253.8550

1700 N. Waterfront Pkwy.
Bldg. 300 • Suite C
Wichita, KS 67206

Phone: 316.558.5262
Fax: 316.558.5263

ROGER L. MARTIN *Independent Petroleum Geologist*

200 E 1st St, Ste 405, Wichita, KS 67202

Office 316-833-2722 Cell: 316-250-6970
KS Field Cell: 316-655-1227
Fax: 316-425-3829
Email: rogermartingeo@yahoo.com

ALFRED JAMES III *Petroleum Geologist* Kansas - Colorado - Utah

200 W. Douglas, Ste. 525, Wichita, Kansas 67202

SIPES # 1111
Office (316) 267-7592
alfred.james55@yahoo.com

M. Bradford Rine

Honorary Life Member—Kansas Geological Society

Licensed Geologist—KS. #204
Registered Professional Geologist—Wyo. # 189
Certified Geologist—A.A.P.G. # 2647
S.I.P.E.S. # 1584 S.P.E. #109833-4

PROSPECT EVALUATION • PROSPECT GENERATION
WELLSITE SUPERVISION • EXPERT TESTIMONY • OPERATIONS
PROPERTY EVALUATION • RESERVOIR STUDIES
DRLG./COMP. CONSULTATION

Suite 415
100 S. Main
Wichita, KS 67202

Office: (316) 262-5418
Fax: (316) 264-1328
Cell: (316) 250-5941

WESLEY D. HANSEN *Consulting Geologist*

Well site Supervision • Geologic Studies
212 N. Market, Ste 257
Wichita, Kansas 67202
Off: (316) 263-7313
Mobile: (316) 772-6188
whansen4651@sbcglobal.net



Paul Gunzelman
President/Geologist

Wichita, Kansas 316.634.6026
email p.gun@sbcglobal.net



KEVIN L. KESSLER

INDEPENDENT/CONSULTING PETROLEUM GEOLOGIST

WELLSITE SUPERVISION • GEOLOGIC RESEARCH
OIL & GAS PROSPECTS
KANSAS & EASTERN COLORADO

MAILING ADDRESS PHONE
1199 N. PONDEROSA RD. RES.: (316) 522-7338
BELLE PLAINE, KS 67013 MOBILE: (316) 706-6636
EMAIL: KKESSLER1199@AOL.COM

MELLAND ENGINEERING, INC.

Petroleum Engineering & Geological Consulting

James E. Melland, P.E., P.G.
President

Office: (620) 241-4621 Fax: (620) 241-2621

jamesm@mellandengineering.com
www.mellandengineering.com

P.O. Box 841, McPherson, KS 67460

KGJ ENTERPRISES

Contract Oil & Gas Accounting &
Office Management

Kathryn G. James, MBA (316) 775-0954
4278 SW 100th ST. (316) 250-5989
Augusta, KS 67010 kgjames@onemain.com



Steve Van Buskirk **Petroleum Geologist**

Van Buskirk Geo-Consulting

15171 Ridgfield Ln
Colorado Springs, CO 80921
and
514 Rumsey
Kiowa, KS 67070

Home: 719-487-8297
Cell: 719-393-2900
Nexleveline@msn.com

Available for Well site work



Geotech & Design Services

7171 Highway 6 North, #202

Houston, Texas 77095

Data digitizing, drafting & computer graphics

Tel: (281) 858-7100

Fax: (281) 500-8534

heather.wilson@geotechmap.net

Heather Wilson
Account Manager

www.geotechmap.net

Mark Your Calendar
KGS Annual Banquet

Friday, January 30th

Inducting into
Honorary Membership

Robert O'Dell



We Invite You
To join

Kansas
Geological
Foundation

\$50.00 membership is
tax deductible

Call 316-265-8676

Or send checks to:
Kansas Geological Foundation
212 N. Market, Ste. 100
Wichita, KS 67202

The Following Are For Sale

Kansas Completion Cards:
Several sets (call for more information)

Oklahoma Completion Cards:
2 sets—entire state

Nebraska Completion Cards—West ranges

New Mexico Completion Cards

North Dakota Completion Cards

Utah Completion Cards

Microfiche Electric Logs
Kansas
Oklahoma
Texas

Geological Office Furniture:

- 8-drawer completion card cabinets—21 available
- 7-drawer cabinets—10 available
- Map cabinets—metal—2 available
- Map racks—different sizes—6 available

Call: 316-265-8676
Ask for Ted

*The Society Wishes To Thank
The Following For Supporting The
Annual Fishing Tournament*

Jon Christensen
Alan DeGood
Duke Drilling Co.
Edmiston Oil Co.
Gore Oil Co.
Jim Hall
Maverick Drilling Co.
Jay McNeil
Mull Drilling Co.
Murfin Drilling Co.
Nabors Drilling &
Completion

Oil Producers, Inc. of
Kansas
Pickrell Drilling Co.
Raymond Oil Co., Inc.
Ritchie Exploration, Inc.
Bill Shepherd
Sterling Drilling Co.
Strata Exploration, Inc.
Fred Stump
Trek, AEC
Trilobite Testing, LLC



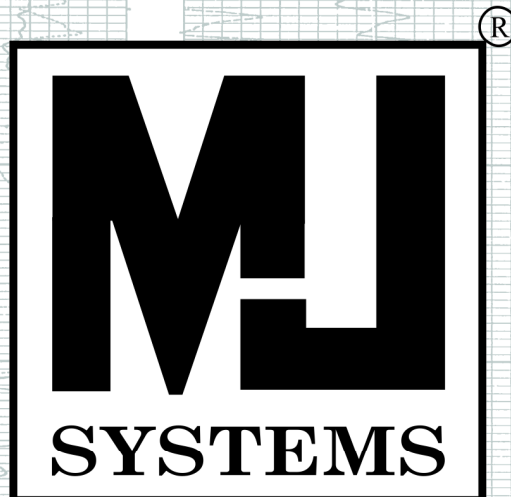
Society's Holiday Open House

Friday, Dec. 19th



**In the library from
11:00 AM—closing**

**Come join us for some food
and holiday cheer!**



Logs Since 1971

www.mjlogs.com

6 MILLION LOGS

DEPTH REGISTERED

**INTERNET
DOWNLOADS**

**ONLINE
SEARCH**

SEARCH AND FILTER BY DEPTH

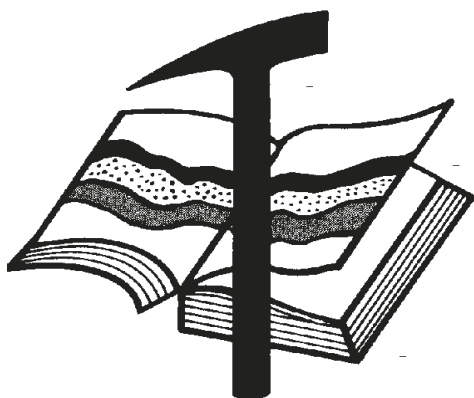
OWN THE LOGS

LogSleuth Software

CLUB WEB

WEB SITE CATALOGUE

1-800-310-6451



Kansas Geological Foundation

Web Site: www.kgfoundation.org

**212 North Market
Wichita, Kansas 67202**

A not-for-profit educational and scientific corporation

GOALS:

- promote geology and earth science
- preserve geological records
- establish memorials and endowments
- support field trips and seminars
- financial aid and grants to students

PLEASE HELP SUPPORT THE FOUNDATION

Kansas Geological Foundation Services

The Kansas Geological Foundation provides the following services as a part of the organization's commitment to educate the public regarding earth science.

Speaker's Bureau

A list of speakers available to talk about various aspects of geology may be obtained by contacting Janice Bright at the KGS Library, 265-8676. This service is free to the public.

DVD/Videotape Library

The KGF maintains a DVD & videotape library focused primarily on the various fields of earth science. These tapes may be checked out without charge by the public. To obtain a list of tapes, please contact the KGS Library, 212 N. Market, Ste. 100, Wichita, KS 67202, or call Janice Bright at 265-8676.

The Kansas Geological Foundation was founded in March, 1989 as a not-for-profit corporation under the guidelines of section 501(c)(3) of the tax code to provide individuals and corporations the opportunity to further the science of geology. It is dedicated to providing charitable, scientific, literary and educational opportunities in the field of geology for the professional geologist as well as the general public.

KGF can receive in-kind donations through which the donor may receive a tax deduction. Of equal importance, the KGF provides the financial resources to sort, process and file this data at the KGS library. If you have a donation to make, please contact the KGF at 265-8676.

Your tax-deductible membership donation helps to defray the cost of processing donations and to support public education programs about the science of geology. Annual membership begins at \$50.00 per year. Donations of \$100.00 or more are encouraged through the following clubs:

Century Club	\$ 100 to \$ 499
\$500 Club	\$ 500 to \$ 999
Millennium Club	\$1000 to \$5000
President's Club	\$5000 and over

WESTERN KANSAS
SOUTHERN NEBRASKA



EASTERN COLORADO
OKLAHOMA & TEXAS PANHANDLES

10 Drilling Rigs

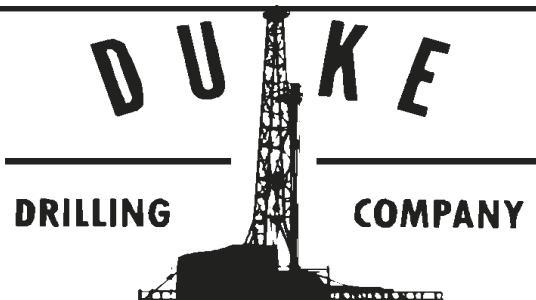
For contract information, please contact:
Blaine Miller / Drilling Department
316-858-8607 (Direct) or 316-267-3241

250 N. Water #300—Wichita, KS 67202

**10 Well Service Rigs &
Roustabout Services**

For contract information, please contact:
Alan Hays, Well Service Sprvsr.
785-421-2103 or 785-567-8739 (cell)

East Highway 24—Hill City, KS 67642



ROTARY DRILLING CONTRACTOR

620 Hubbard PO Box 823
Great Bend, KS 67530
Phone 620-793-8366

100 S. Main, Ste. 410,
Wichita, KS 67202
Phone 316-267-1331
Fax 316-267-5180



TOMCAT DRILLING LLC

TIMOTHY J. SANDERS
tsanders@tomcatdrilling.com
CELL (316) 259-1652

WWW.TOMCATDRILLING.COM

CORPORATE OFFICE
8301 E. 21ST NORTH, SUITE 360
WICHITA, KANSAS 67206
PHONE (316) 262-8554
FAX (316) 267-0749

FIELD OFFICE AND YARD
225 NW HIGHWAY 270
WOODWARD, OKLAHOMA 73801
PHONE (580) 254-3026
FAX (580) 254-3028



5 ROTARY RIGS SERVING
OKLAHOMA, KANSAS AND
THE TEXAS PANHANDLE

Great Bend
(620) 793-5861

Ness City
(785) 798-3843

Medicine Lodge
(620) 886-5926

**ALLIED
CEMENTING CO., INC.**

Acidizing Available at Medicine Lodge District

Russell
(785) 483-2627

Oakley
(785) 672-3452

**LOCKHART
GEOPHYSICAL**

2D & 3D Vibroseis Acquisition
ARAM*AIRES Seismic Recording System

1600 Broadway, Suite 1660 • Denver, CO 80202-4915
(303) 592-5220 • info@lockhartgeo.com
for complete information go to: www.lockhartgeo.com

MBC

**WELL LOGGING & LEASING
UNMANNED GAS DETECTORS
MUD LOGGING
CERTIFIED INSTRUMENT TECH**

AUSTIN GARNER

MARLA GARNER

24-HOUR PHONE (620) 873-2953
MEADE, KANSAS



FULL LINE SUPPLY STORE
With Pump Shop, New & Used Pipe,
Equipment and Fittings
Exclusive S-55 casing source

STORES:

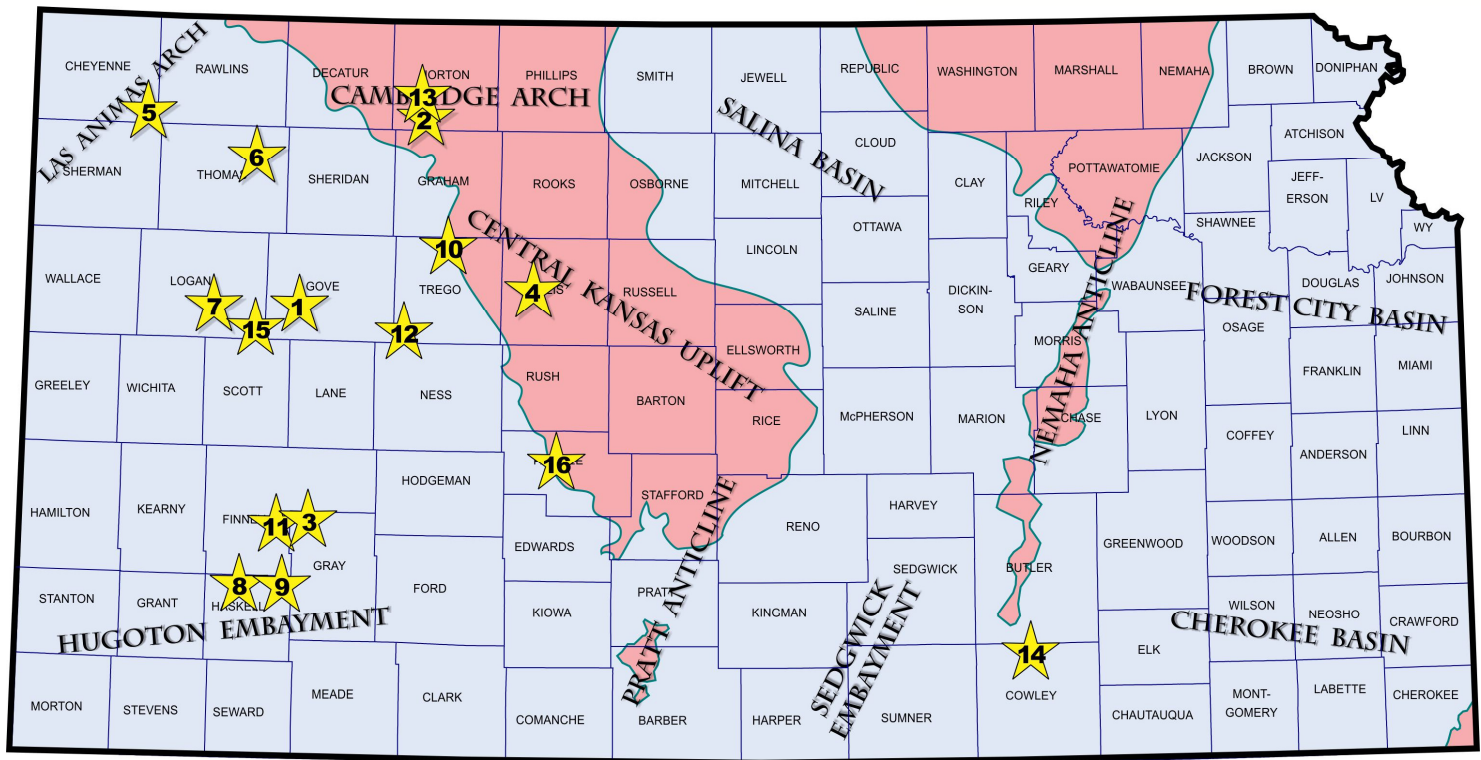
Chanute, KS	620-431-6500	Ness City, KS	800-589-5733
El Dorado, KS	316-321-9323	Osawatomie, KS	913-755-2297
Garden City, KS	877-976-1700	Spivey, KS	620-532-5261
Hays, KS	785-650-0199	McCook, NE	308-345-1542
Hugoton, KS	620-428-6604		

SALES OFFICES:

Wichita, KS	800-777-7672	Denver, CO	303-349-8417
Williston, ND	701-570-9255		

Exploration Highlights

By John H. Morrison, III
Independent Oil & Gas



1 • O'Brien Resources LLC, Shreveport (LA), is pumping 67 barrels of oil and 25 barrels of water per day at their 1 MSJ - Penner 28 (API 15-063-22184) in Gove County. The wildcat well found new reserves over one mile northeast of existing production in the Butterfield - Overland Southeast field. The MSJ - Penner well is producing oil from two zones in the Marmaton formation from 4339 to 4345 ft and 4429 to 4443 ft. Maverick Drilling tools bottomed the well at a total depth of 4610 ft. Drill site is located in the SW SE NW of section 28- T14s- R30W, about ten miles south and nine miles west of Gove, Kansas. The new field has not been named.

2 • Samuel Gary Jr and Associates, Inc., Denver (CO), has established a new unnamed oil field in Norton County, about two miles north of Lenora, Kansas. Discovery was made at the 1-2 JMNJ Farm (API 15-137-20700), located in the SW NW NW of section 2- T5s- R24W. The well found oil deposits in the Shawnee (Toronto) and Lansing-Kansas City formations. No details on production volume has been reported. Total depth was ended at 3810 ft by Discovery Drilling rig. The new field lies nearly two miles northwest of LKC oil production in the Lenora field (1976).

3 • American Warrior, Inc., Garden City (KS), has discovered Morrow oil reserves on the Gray County - Finney County line with the completion of the 2-19 Katherine (API 15-069-20478). The wildcat pool opener was drilled in the NW SW NW of section 19 - T24s- R30W, about seven miles northwest of Charleston, Kansas. A total depth of 5150 ft was obtained by Duke Drilling tools. The new oil deposits lie nearly two miles southwest of established Morrow and Mississippian oil and gas production in the MIH field (1981). The new field is unnamed at this time.

4 • Cobalt Energy LLC, Wichita (KS), has successfully completed the 1-24 Sack Trust A (API 15-051-26724) as a new pool discovery in the SW NW NW of section 24- T13s- R19W, Ellis County. The well found oil reserves almost one mile west of multi-pay oil production in the Gatschet Southeast field (1968). Operator hired Southwind Drilling as contractor to drill the well to a total depth of 3750 ft. The discovery is located about one mile north and three miles west of Hays, Kansas.

5 • Downing-Nelson Oil Company, Inc., Hays (KS), is producing oil from the Marmaton (Pawnee) limestone at the 1-24 Kramer Unit (API 15-023-21394) in Cheyenne County, northwest Kansas. The new unnamed pool opener was drilled in the SE SW SW of section 24- T5s- R37W by Ninnescan Drilling tools. Total depth is 5129 ft. The well is located one and one-half miles northwest of the Tovrea oil field (1978), which has given up over one-half million barrels of oil from the Lansing-Kansas City and Marmaton formations. No name has been assigned to the new field. Field area is located ten miles south and five miles east of Bird City, Kansas.

6 • Independent producer Carmen Schmitt, Inc., Great Bend (KS), has completed the 1-12 Depe (API 15-193-20930) to establish a new unnamed oil field in Thomas County. The 4800-ft well is producing an undisclosed amount of crude from the Lansing-Kansas City formation at site located in the SW NE NW of section 12- T7s- R32W, almost five miles west of the town of Rexford. The deposits lie over three miles northeast of the Knudson field (1977, LKC oil).

7 • New Gulf Operating LLC, Tulsa (OK), has discovered Marmaton oil deposits at the 1-33 Baker (API 15-109-21276), located in the SW SW SW of section 33- T14s- R34W, in Logan County. VAL Energy rotary tools drilled the well to a total depth

of 4715 ft. The unnamed pool opener found the new oil reserves over one and one-quarter miles northeast of established production in the Lone Butte Southwest field - another New Gulf Marmaton (Altamont) oil discovery made in 2012. The Baker lease lies about eight miles south and three miles east of Russell Springs, Kansas.

8 • Merit Energy Company LLC, Dallas (TX), is producing crude oil from the Mississippian Chester Sand formation at their 1 Warner G (API 15-081-22063), spotted in the NW SW SE of section 26- T27s- R33W, in Haskell County. The new reserves were found two miles north of Atoka and Mississippian oil wells in the Santa Fe North field (2005), or about twelve miles north and three miles west of Sublette, Kansas. Operator hired Saxson Drilling to bottom the well at 5700 ft total depth. The new field has not been named.

9 • Ring Energy, Inc., Midland (TX), has successfully completed the 1 Ardery 11 (API 15-081-22045) with dual pay coming from the Morrow (perfs 5032-5036 ft) and Mississippian Saint Louis B (perfs 5189-5194 ft). The wildcat well was drilled to a total depth of 5336 ft at site in the SE NE SW of section 11- T27s- R31W, about seven miles north and thirteen miles west of Montezuma, Kansas. Closest established production in the vicinity lies over one and one-quarter miles to the southeast in the Cornfield pool (2009, Mississippian gas). The new field has not been named.

10 • Samuel Gary Jr and Associates, Inc., Denver (CO), is producing oil from the Lansing-Kansas City formations at their 1-17 Flax - a 4410 ft deep wildcat well spotted in the NW NE SE of section 17- T11s- R23W, in Trego County. The new unnamed oil field is located one and one-quarter miles east of LKC oil production in the Magnum field (2011) and is four miles north of Wakeeney, Kansas. Production details are being held confidential.

11 • American Warrior, Inc., Garden City (KS), has discovered Mississippian (Saint Louis) oil reserves at the 3-23 Irsik-Finney (API 15-055-22305), located in the SW SW NE of section 23- T24s- R31W, Finney County. The new pool discovery well found crude deposits over three miles north of Mississippian oil production in the Pierceville field, which American Warrior also established earlier this year in section 2- T25s- R31W. Details are confidential. The 3-23 Irsik-Finney was drilled to a total depth of 5000 ft about eight miles east of Garden City, Kansas. The new oil field has not been named.

12 • Tengasco, Inc., Hays (KS), has established a new unnamed Mississippian oil field slightly over one mile north of the Splitter field in Trego County. The new reserves were discovered at the 1 Howard A (API 15-195-22955), NW SE NE in section 17- T15s- R25W, approximately eight miles north and four miles west of Arnold, Kansas. Operator hired American Eagle Drilling to drill the well to a total depth of 4378 ft. The Splitter field gave up around 17,000 barrels of oil from the Marmaton and Mississippian formations from 1971 to 1977. Mississippian pay was recovered from 4392 to 4478 ft in depth.

13 • Samuel Gary Jr & Associates, Inc., Denver (CO), has completed the 1-26 Hazlett Etal (API 15-137-20698) as a commercial well producing crude oil from the Shawnee (Toronto) and Lansing-Kansas City formations. The wildcat well (new pool discovery) was drilled to a total depth of 3950 ft at site located in the NW NW SE of section 26- T4s- R24W, about four miles north of the town of Lenora, Kansas in Norton County. Closest known production in the vicinity of the new find lies over three miles away in the Lenora field (1976, LKC oil). The new field is unnamed at this time.

14 • Alton Oil LLC, Winfield (KS), is pumping an unknown amount of crude from the Mississippian formation at their 1 Jack (API 15-035-24556), spotted in the NE NW NW of section 21- T30s- R5E, in Cowley County. The wildcat pool opener was drilled to a total depth of 3190 ft by Ron Gulick Drilling tools at site located about three miles north and one mile west of Wilmot, Kansas. Lease lies three-quarters mile north of established production in the Nauman field (1982) which produces oil from both the Cherokee and Mississippian zones.

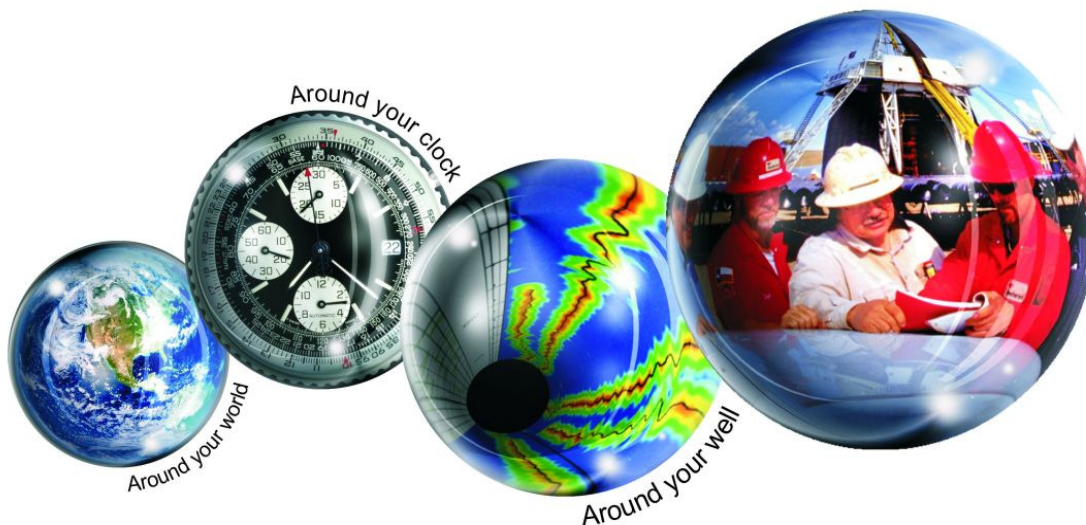
15 • Black Tea Oil LLC, Hays (KS), has explored nearly one and one-quarter miles north of established multiple-pay production in the Elkader Townsite field (2012) to discover new oil reserves in the Lansing-Kansas City and Cherokee formations. The firm's 1 DFK-1 (API 15-109-21304), NW SE NW in section 2- T15s- R32W, Logan County, is pumping an unknown amount of crude at site eight miles north and seventeen miles east of Russell Springs, Kansas. Landmark Drilling tools bottomed the well at a total depth of 3190 ft.

16 • Ritchie Exploration, Inc., Wichita (KS), has discovered Lansing-Kansas City oil deposits at the 1-X Biggs 21-D (API 15-145-21759) in Pawnee County. Operator drilled the 4550 ft deep well into Pre Cambrian rocks utilizing Southwind Drilling tools. The well found the oil deposits over two miles from closest known production in the area. The Biggs well was drilled in the SW NE SE of section 21- T21s - R18W, or about one mile north and five miles east of Rozel, Kansas.



Kansas Geological Foundation Memorials

KGS Member	Date Deceased	Memorial Est.	KGS Member	Date Deceased	Memorial Est.
Dan Bowles	09/89	1990	Edward B. Donnelly	08/01	2001
John Brewer	10/89	1990	Richard P. Nixon	02/02	2002
George Bruce	08/89	1990	Robert W. Frensley	12/01	2002
Robert Gebhart	01/90	1990	Gerald W. Zorger	01/02	2002
Ray Anderson, Jr.	11/90	1990	Don L. Calvin	03/02	2002
Harold McNeil	03/91	1991	Claud Sheats	02/02	2002
Millard W. Smith	08/91	1991	Merle Britting	2002	2002
Clinton Engstrand	09/91	1991	Harold Trapp	11/02	2002
M.F. "Ted" Bear	10/91	1991	Donald M. Brown	11/02	2003
James & Kathryn Gould	11/91	1991	Elwyn Nagel	03/03	2003
E. Gail Carpenter	06/91	1993	Robert Noll	09/03	2003
Benton Brooks	09/92	1992	Benny Singleton	09/03	2003
Robert C. Armstrong	01/93	1993	Jay Dirks	2003	2003
Nancy Lorenz	02/93	1993	J. Mark Richardson	02/04	2004
Norman R. Stewart	07/93	1993	John "Jack" Barwick	02/01	2004
Robert W. Watchous	12/93	1993	Richard Roby	03/04	2004
J. George Klein	07/94	1994	Ruth Bell Steinberg	2004	2004
Harold C.J. Terhune	01/95	1995	Gordon Keen	03/04	2004
Carl Todd	01/95	1995	Lloyd Tarrant	05/04	2004
Don R. Pate	03/95	1995	Robert J. "Rob" Dietterich	08/96	2004
R. James Gear	05/95	1995	Mervyn Mace	12/04	2004
Vernon Hess	06/95	1995	Donald Hoy Smith	04/05	2005
E. K. Edmiston	06/95	1995	Richard M. Foley	06/05	2005
Jack Rine	07/95	1995	Wayne Brinegar	06/05	2005
Lee Cornell	08/95	1995	Charles B. Moore	09/96	2005
John Graves	10/95	1995	Jack Heathman	05/06	2006
Wilson Rains	10/95	1995	Charles Kaiser	09/06	2006
Heber Beardmore, Jr.	09/96	1996	Rod Sweetman	08/06	2006
Elmer "Lucky" Opfer	12/96	1996	Karl Becker	10/06	2006
Raymond M. Goodin	01/97	1997	Frank Hamlin	10/06	2006
Donald F. Moore	10/92	1997	Marvin Douglas	12/06	2006
Gerald J. Kathol	03/97	1997	Robert W. Hammond	04/07	2007
James D. Davies	08/88	1997	Eldon Frazey	04/07	2007
R. Kenneth Smith	04/97	1997	Pete Amstutz	05/07	2007
Robert L. Dilts	05/97	1997	Charles Spradlin	05/07	2007
Delmer L. Powers	06/72	1997	Donald R. "Bob" Douglass	09/07	2007
Gene Falkowski	11/97	1997	Vincent Hiebsch	11/07	2007
Arthur (Bill) Jacques	01/98	1998	Glen C. Thrasher	03/08	2008
Bus Woods	01/98	1998	Peg Walters	06/08	2008
Frank M. Brooks	03/98	1998	Theodore "Ted" Sandberg	07/08	2008
Robert F. Walters	04/98	1998	James Ralstin	11/08	2008
Stephen Powell	04/98	1998	Earl Brandt	04/09	2009
Deane Jirrels	05/98	1998	Walter DeLozier	05/09	2009
William G. Iversen	07/98	1998	Don D. Strong	01/10	2010
Ann E. Watchous	08/98	1998	John Stone	02/10	2010
W.R. "Bill" Murfin	09/98	1998	Craig Caulk	03/10	2010
Donald L. Hellar	11/98	1998	Joseph E. Moreland, Jr.	03/10	2010
Joseph E. Rakaskas	01/99	1999	Gene Garmon	03/10	2010
Charles W. Steincamp	02/99	1999	James F. Dilts	05/10	2010
Robert and Betty Glover	10/96	1998	Jerry Pike	05/10	2010
Howard E. Schwerdtfeger	11/98	1999	Donald Hollar	06/10	2010
W. W. "Brick" Wakefield	03/99	1999	Delbert Costa	08/10	2010
V. Richard Hoover	01/00	2000	John Tanner	08/10	2010
Warren E. Tomlinson	01/00	2000	William (Bill) Owen	09/10	2010
James A. Morris	01/00	2000	Harold (Hal) Brown	10/10	2010
Eric H. Jager	03/00	2000	Edmund G. Lorenz	11/10	2010
Kenneth W. Johnson	03/00	2000	Thomas E. Black	05/11	2011
Dean C. Schaake	03/00	2000	Wayne E. Walcher	07/11	2011
Fred S. Lillibridge	05/00	2000	Henry F. Filson	07/11	2011
Jerry A. Langrehr	07/00	2000	Thomas Ray	07/11	2011
Clark A. Roach	07/00	2000	Edgar E. Smith	09/11	2012
Floyd W. "Bud" Mallonee	10/00	2000	Marilyn Messinger	06/13	2013
Ralph W. Ruuwe	09/00	2000	Micheal Mitchell	9/13	2013
Robert L. Slamal	02/01	2001	Orvie Howell	11/13	2013
Jerold E. Jespersen	06/01	2001	James Thompson	11/13	2013
William A. Sladek	06/01	2001	Dick Rowland	09/13	2014
Harlan B. Dixon	06/01	2001			



All Around You

**Weatherford has always
been driven by your needs.**

Now, with the addition of Precision Energy Services we're continuing to build a world of skills, services and technologies that revolve – and evolve – around you.

The result?

An expanded global network of 25,000 people, 730 service bases and 87 manufacturing facilities in 100 countries.

This increased local knowledge and service is there to support you anywhere, anytime. From midday in the Middle East to midnight in the middle of nowhere.

And with greatly strengthened capabilities in the critical evaluation skills of directional drilling and wireline logging, we can do even more to improve the profitability and productivity of your wells.

To see how our sphere of services can work for you, visit www.weatherford.com or contact either your Weatherford or former Precision Energy Services representative.


Drilling | Evaluation | Completion | Production | Intervention

© 2006 Weatherford International Ltd. All rights reserved. Incorporates proprietary and patented Weatherford technology.

CHANGE SERVICE REQUESTED

KGS BULLETIN
Nov-Dec 2014

November 2014

Sun	Mon	Tue	Wed	Thu	Fri	Sat
						1
2	3	4	5	6	7	8
9	10	11	12	13	14	15
16	17	18	19 Tech Talk	20	21	22
23	24	25	26	27	28	29
30				Library Closed Thanksgiving		
						

December 2014

Sun	Mon	Tue	Wed	Thu	Fri	Sat
	1	2 Tech Talk	3	4	5	6
7	8	9	10	11	12	13
14	15	16 Tech Talk	17	18	19 Library Open House	20
21	22	23	24	25	26	27
				Library closed Christmas		
28	29	30	31	1	2	
				Library closed New Year's		
					