



KANSAS GEOLOGICAL SOCIETY

BULLETIN

Volume 92 Number 5

September - October 2017

Established 1925

IN THIS ISSUE

WORKING WITH WELL AND LOG DATA Part 1:

Porosity and Cross Plot Analysis of a Mississippian Interval from Mcpherson County, South Central KS

Hendratta N. Ali, Fort Hays State University Page 12-15

SAVE THE DATE - KGS FISHING TOURNEY SEPTEMBER 15

SAVE THE DATE - KGS GOLF TOURNEY SEPTEMBER 18

SAVE THE DATE - KGS SHOOTING TOURNEY OCTOBER 13





THE TOTAL PACKAGE

www.dawson3d.com



MIDLAND 432-684-3000 | HOUSTON 713-917-6772
OKLAHOMA CITY 405-848-7512 | DENVER 303-723-0440
PLANO 972-881-1099 | CALGARY 403-263-7770

Use Your KGS Library For All Your Printing Needs

Old photos?
Old documents?
We can scan them for you!



THE RIGHT CHOICE FOR SEISMIC



SERCEL UNITE & INOVA HAWK CABLE-LESS SYSTEMS

CENTRALLY OWNED & OPERATED IN WICHITA, KS

AHV-IV COMMANDER 362/364 VIBS

HSE MANAGEMENT PROGRAM

SAFETY & QUALITY ORIENTED

PERMITTING SERVICES

3500 N. Rock Rd. Bldg. 800 Wichita, KS 67226

Phone: (316) 636-5552 Fax: (316) 636-5572 Website: www.paragongeo.com



New TrueLog

MJ Systems High Quality Depth Registered Raster Image Well Logs
Directly Import into popular Mapping and Cross-Section Applications

IT'S FAST • IT'S EASY • NO SOFTWARE • APPLICATION READY

► ORDER ► DOWNLOAD ► DIRECT IMPORT ► OWN THE LOGS

- No Long Term Contractual Obligations
- Never Have to Delete the Logs you Purchase

Search Catalog at www.mjlogs.com

Call 1-800-310-6451 or email esales@mjlogs.com

Providing Well Logs since 1971



Table of Contents

Features

WORKING WITH WELL AND LOG DATA Part 1:

**Porosity and Cross Plot Analysis of a Mississippian Interval from Mcpherson County,
South Central KS**

Hendratta N. Ali, Fort Hays State University

Departments & Columns:

KGS Tech Talks	4
President's Letter	7
Advertiser's Directory	8
Professional Directory	19
Kansas Geological Foundation Cornerstone	22
Exploration Highlights	25 & 26
Kansas Geological Foundation Memorials	27

ON THE COVER:

*View of Mt. Moran, Teton National Park, Wyoming
Marina on Jackson Lake in foreground
Grand Teton peak in far left of photo*

CALL FOR PAPERS

The Kansas Geological Society Bulletin, which is published bimonthly both in hard-copy and electronic format, seeks short papers dealing with any aspect of Kansas geology, including petroleum geology, studies of producing oil or gas fields, and outcrop or conceptual studies. Maximum printed length of papers is 5 pages as they appear in the Bulletin, including text, references, figures and/or tables, and figure/table captions. Inquiries regarding manuscripts should be sent to manager@kgslibrary.com or mailed to 212 N. Market, Ste. 100, Wichita, KS 67202. Specific guidelines for manuscript submission appear in each issue of the Bulletin, which can also be accessed on-line at the Kansas Geological Society web site at <http://www.kgslibrary.com>

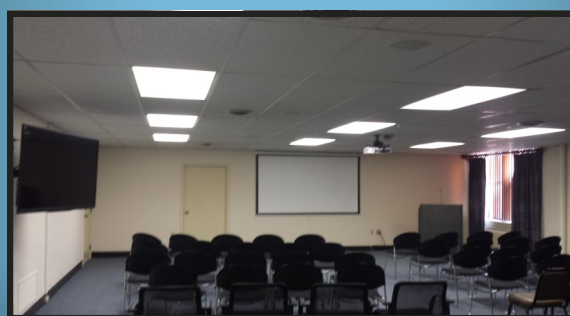
SOCIETY Technical Meetings

KGS 2017 Technical Talks

- September 19 Film Presentation Houston Geological Society by Dr. John Suppe*
- “The Second Half of Plate Tectonics: Finding the Last 200 Ma of Subducted Lithosphere and Incorporating it into Plate Reconstruction”*
- October 11 Woody Leel, President of KU Alumni Association TBA*

Please remember to check the website for the most up to date information on Technical Talks
<http://www.kgslibrary.com/techtalks.cfm>

*Tech Talks are held at Landmark Square
212 N. Market—4th floor
In the Wisdom Center*



Note: For those geologists who need 30 points to renew their licenses, there will be a sign-in sheet at each presentation and also a certificate of attendance.

KANSAS GEOLOGICAL SOCIETY



BOARD OF DIRECTORS

PRESIDENT

Paul Ramondetta

PRESIDENT-ELECT

Beth Isern

SECRETARY

Ken Dean

TREASURER

Wesley Hansen

DIRECTORS

Tim Hellman

Toby Eck

Rocky Milford

ADVISORS

David Clothier

Curtis Covey

COMMITTEE CHAIRMEN

Advertising

Kent Scribner

Advisory

Dave Clothier

Curtis Covey

Annual Banquet

Doug Davis

Budget Committee

Bulletin

Wesley Hansen

Continuing Education

Dave Clothier

Distinguished Awards

Tim Hellman

Environmental

Kent Matson

Field Trip

Larry Skelton

Fishing Tournament

Jon Christianson

Future Plans

Golf

Rob Patton

Historian

Larry Skelton

Investment

Chuck Brewer

Library

Ted Jochems

Membership

Larry Friend

Nomenclature

John H. Morrison, III

Picnic

Public Relations

Shooting Tournament

Larry Richardson

Technical Program

Dave Clothier

A.A.P.G. DELEGATES

Ernie Morrison
2018

Douglas Davis
2018

BULLETIN STAFF

EDITORS

Ernie Morrison

(316) 264-6366

Wes Hansen

(316) 772-6188

ADVERTISING

Kent Scribner

Stelbar Oil Corp.

(316) 264-8378

PROFILES/MEMORIALS

Robert Cowdery

EXPLORATION HIGHLIGHTS

John H. Morrison, III

Independent O&G

(316) 263-8281

STATE SURVEY

KS Geological Survey

(785) 864-3965

SOCIETY NEWS

KGS Library

(316) 265-8676

MANAGER

Tammy Nichols-interim manager

(316) 265-8676

EDITOR EMERITUS

Wes Hansen

(316) 772-6188

Larry Richardson

(316) 262-8427

K.G.S. LIBRARY

PHONE 316-265-8676 **FAX** 316-265-1013

email: frontdesk@kgslibrary.com or

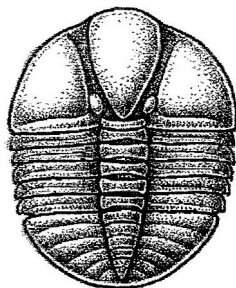
Web: www.kgslibrary.com

The KGS *Bulletin* is published bi-monthly by the Kansas Geological Society, with offices at 212 North Market, Wichita, Kansas 67202 Copyright 2016, The Kansas Geological Society. The purpose of the *Bulletin* is to keep members informed of the activities of the Society and to encourage the exchange and dissemination of technical information related to the Geological profession. Subscription to the *Bulletin* is by membership in the Kansas Geological Society. Limited permission is hereby given by the KGS to photocopy any material appearing in the *KGS BULLETIN* for the non-commercial purpose of scientific or educational advancement. The KGS, a scientific society, neither adopts nor supports positions of advocacy, we provide this and other forums for the presentation of diverse opinions and positions. Opinions presented in these publications do not reflect official positions of the Society.



Twenty-two Trucks Serving
Kansas—Colorado—Texas—Nebraska—Illinois

DST's
Back Pressure testing (G1 & G2)
Slick line services using the same Weatherford
Electronic Pressure Gauges used on DST's



1-800-728-5369

FAX 1-785-625-5620

www.trilobitetesting.com
trilobite@eaglecom.net

SHOPS LOCATED IN:

Hays, KS
Scott City, KS
Pratt, KS
Hugoton, KS
Oberlin, KS
Clay City, IL

CAN YOU NAME THE CRITTER?

Sponsored by Trilobite Testing, Inc.

Is your paleo up to date?

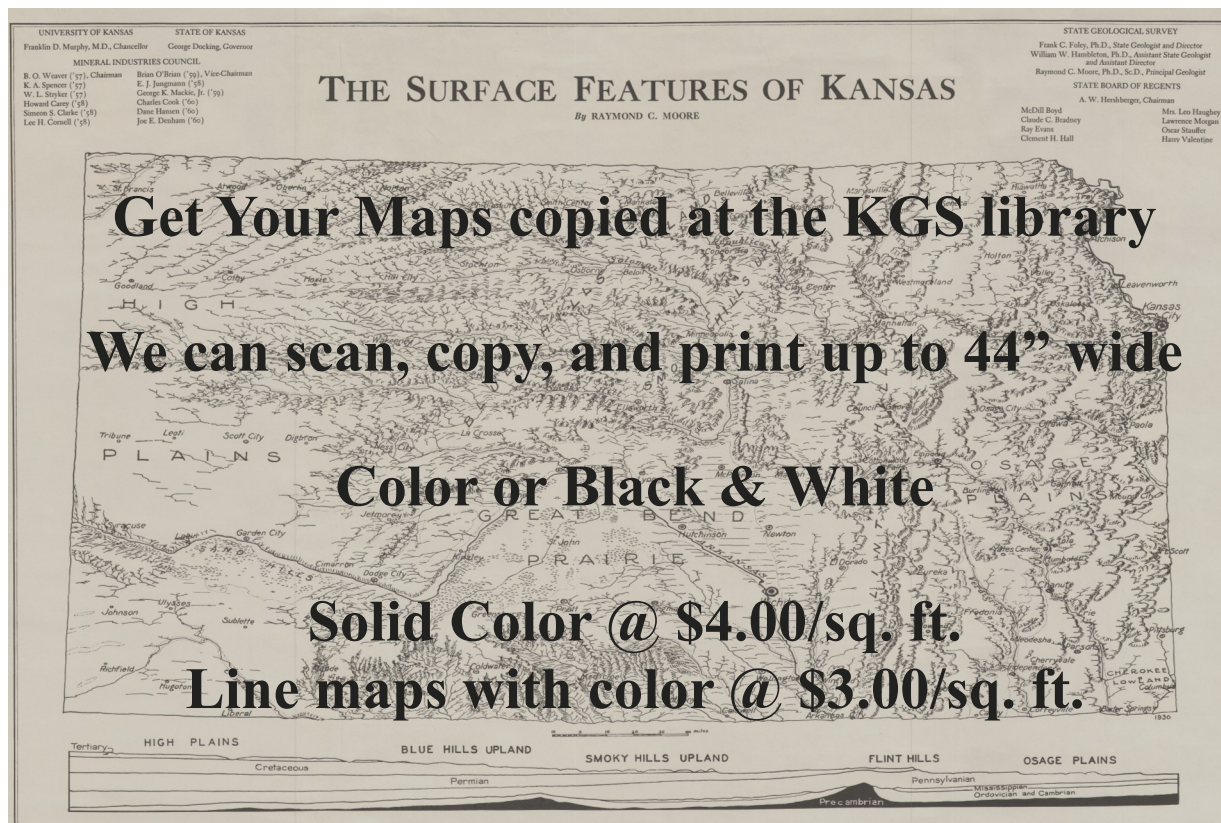
If you know the name of the trilobite,
submit your guess via e-mail to
manager@kgslibrary.com

Remember that *Trilobite Testing* is
sponsoring your efforts, so be sure to thank
Paul Simpson the next time you see him.

CONGRATULATIONS!!

**Randy Lilak correctly identified
The last one as: Harpides**

Bulletin committee members and PhD's in
Paleontology are prohibited from entering.



President's Letter

Greetings to all KGS Members!

A hint of Fall in the air? Likewise, the upward swing in drilling activity has leveled off somewhat. The improved society's economic standing partly the result of steady business, and stock market bullishness.

Tammy Nichols is the interim manager, and has been focusing on the continuing saga of data integration. This is in conjunction with the Kansas Geological Foundation, and the Kansas Geological Survey. She and her staff of three (Rhonda, Angela, and Janice) have continued to provide the membership with quality service that we are all accustomed.



Angela Forrest (library employee) will again have a booth this coming October in Oklahoma City at the AAPG sectional meeting. She completed a successful mission to Houston in early April, attending the 100th AAPG anniversary at its national convention, manning the KGS booth. She expertly engaged the many visitors as she promoted the library status and that of Kansas exploration in general.

Other upcoming events include the KGS golf tournament on September 18th organized by Robert Patton. The fishing tournament will be on September 15th organized by Jon Christianson. The shooting tournament will be in October, organized by Larry Richardson. Also in October, there might be a belated KGS picnic at some unknown location.

May this season bring you good results in your exploratory endeavors. Thank you for your continued support.

Kansas State University DEPARTMENT OF GEOLOGY

Graduate education for active professionals in this innovative program, workshops, site visits and distance courses help professionals advance in their careers. Whether your goal is to receive academic credit, certifications or a master's degree in geology, you'll find a path that leads to your career goals.

CHOOSE FROM SPECIALIZATIONS IN:

- ▶ Petroleum geology
- ▶ Environmental geochemistry
- ▶ Structural Geology
- ▶ Groundwater
- ▶ Exploration geophysics
- ▶ Geomicrobiology

LEARN MORE

Contact Pamela Kempton, department head, for more information at pkempton@k-state.edu. Or contact any of our program partners to learn more.

*K-State Global Campus: dce.k-state.edu
Geology department: k-state.edu/geology
Graduate School: k-state.edu/grad*

KANSAS STATE
UNIVERSITY

Log in to
Walters Digital Library
At
www.kgslibrary.com

Log in as our guest
and see the Society's Database
A convenient way to see what
you might want to order!
Call or email your order to:
316-265-8676
frontdesk@kgslibrary.com

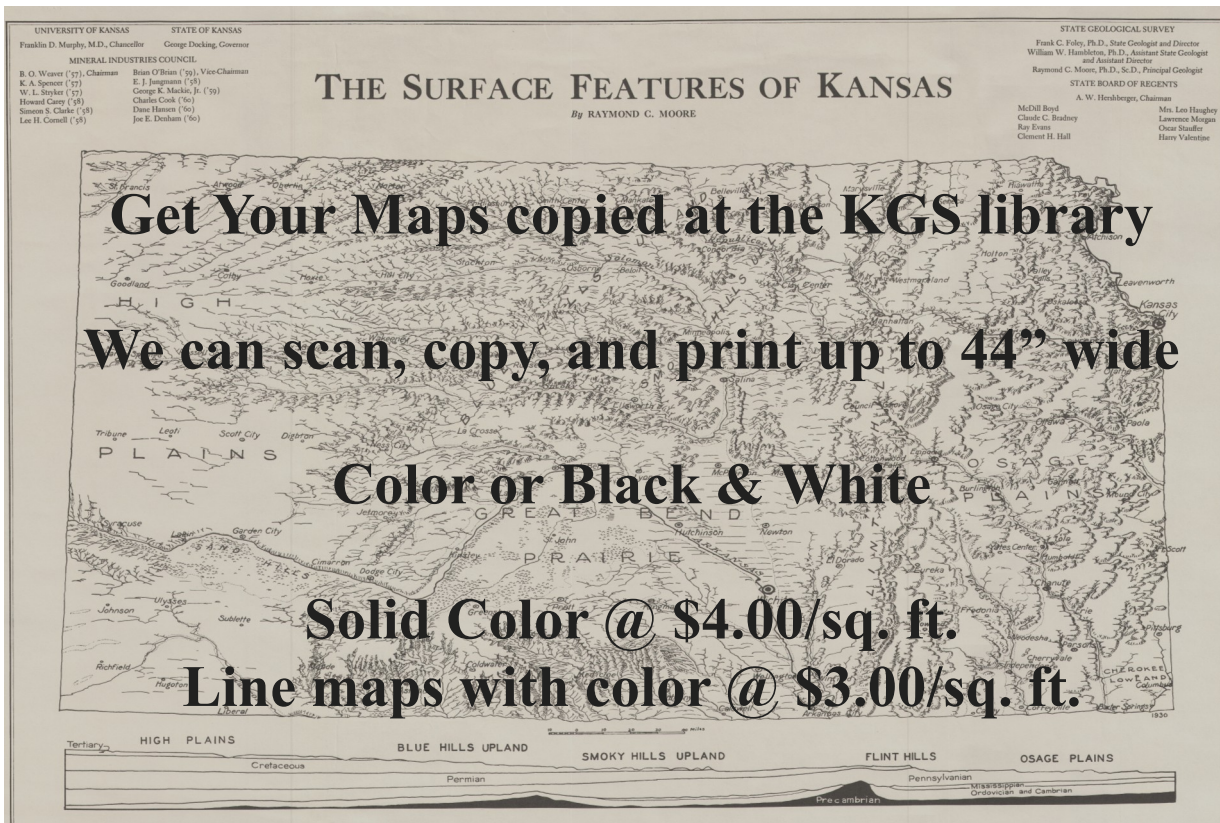
ADVERTISER'S DIRECTORY

	<i>page</i>
Allied Cementing Company, Inc	24
Dawson Geophysical Company	2
Duke Drilling	24
GeoSteering	18
Kansas Geological Foundation	21
Kansas State University	8
Lockhart Geophysical	24
MJ Systems	2
Murfin Drilling Company, Inc	24
PARAGON Geophysical Services, Inc	2
Professional Directory	19
Trilobite Testing	6
Walters Digital Library	17
Well Enhancement Services, LLC	18

ADVERTISER'S RATES: 2017

Full Page	B&W	Color
6 issues	\$2,000	\$2,500
3 issues	\$1,080	\$1,325
1 issue	\$480	\$525
1/2 Page		
6 issues	\$1,000	\$1,500
3 issues	\$540	\$825
1 issue	\$225	\$350
1/4 Page		
6 issues	\$600	\$900
3 issues	\$325	\$525
1 issue	\$150	\$250
1/8 Page		
6 issues	\$300	\$500
3 issues	\$175	\$325
1 issue	\$75	\$185
Professional Ad (Business Card)		
6 issues	\$90	\$180

For one-time ads, call Kent Scribner at 316-264-8378



Robert F. Walters Digital Library

Log in as our Guest

username: guest

password: guest

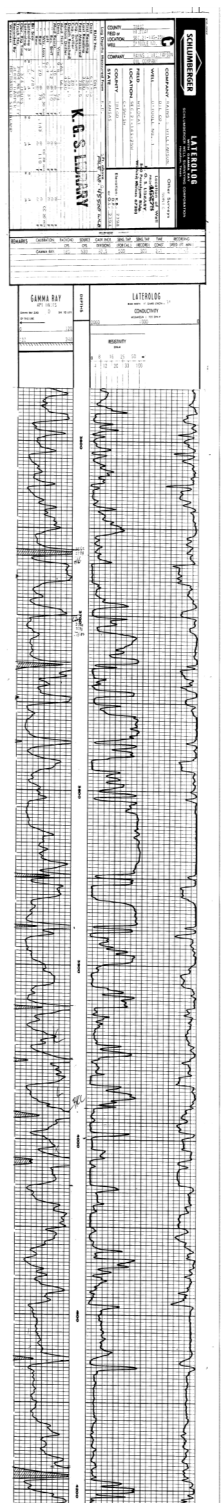
316-265-8676



Let Us Print Your Geo Reports
And Save Your Time For Finding More Oil & Gas
Top Quality Color Printing For Our Membership

Email your files to: kgsorders@gmail.com

*The KGS Library is pleased to
announce a new service*



Creating
LAS files
from our logs
or yours

**\$20.00 per
curve!!**

Quick
turn-around

Send us your log file
or tell us which of
ours you would like
converted.

316-265-8676

Missing reference books and periodicals from the KGS Resource Room

I'm channeling the spirit of my dear departed friend Bob Slamal. Bob was determined to organize all of the text books, survey bulletins and various publications that are in the resource room at the KGS Library. He spent countless hours on his own time to accomplish this task. Many years back, before his untimely death, he instituted a checkout policy for these materials. Cards were filled out with the borrower's name and publication, then placed in an envelope on the shelf where the publication was removed.

Recently I noticed many of these envelopes on the shelves and began to peruse them. Many items have been gone for years. I'm asking that each member check your reference materials for these missing items. I'm sure they will be marked as KGS property.

Please help me in this endeavor.

**Wes Hansen
Editor**



Robert F. Walters Digital Library

The most complete source for Kansas data

Database updated nightly

Day or Night

You can get to the data as you need it

www.kgslibrary.com
To Join: call 316-265-8676

The screenshot displays the Robert F. Walters Digital Geological Library website. The top navigation bar includes links for Search Wells, My Transactions, My Profile, My Account, KGS Home, and Sign Out. The search results table lists various wells with columns for API No., County, Sec, Twp, Rge, Operator, Lease Name, Well No., Spot Location, N S, E W, Spud, Completion, Depth, E I B, E I D, E I G, and Status. A preview of a well log for well 10-314-16W is shown, detailing completion data, test data, and surface data. The well log includes fields for well name, location, and completion details, as well as a section for test data with fields for test no., test date, and test results. The surface data section includes fields for well name, location, and surface data. The well log also includes a section for completion data, showing the well name, location, and completion details. The well log is a detailed record of the well's history and current status, providing valuable information for geologists and engineers.

Porosity and Cross Plot Analysis of a Mississippian Interval from Mcpherson County, South Central KS

Hendratta N. Ali, Fort Hays State University

The Mississippian interval was studied using well log data from gamma, neutron porosity, density porosity, photoelectric and bulk density logs. Log data was obtained from the Canton #1-36 SWD well in the Bitikofer field in Mcpherson, KS. Part of the logged interval was cored between ~2990 ft and ~2992 ft MD. This interval is first analyzed for select petrophysical properties. Known lithologic characteristics of the interval is typical of the Mississippian “Chat” (<http://www.kgs.ku.edu/PRS/Poster/2002/2002-50/P2-01.html>) a heterogeneous units composed of variable mixtures of siliceous, argillaceous and carbonate rocks with highly porous and some tight intervals.

Thin sections from the interval show the presence of different types of porosity expression from nil, single, dual to triple porosity types observed through the cored sections (Figure1).

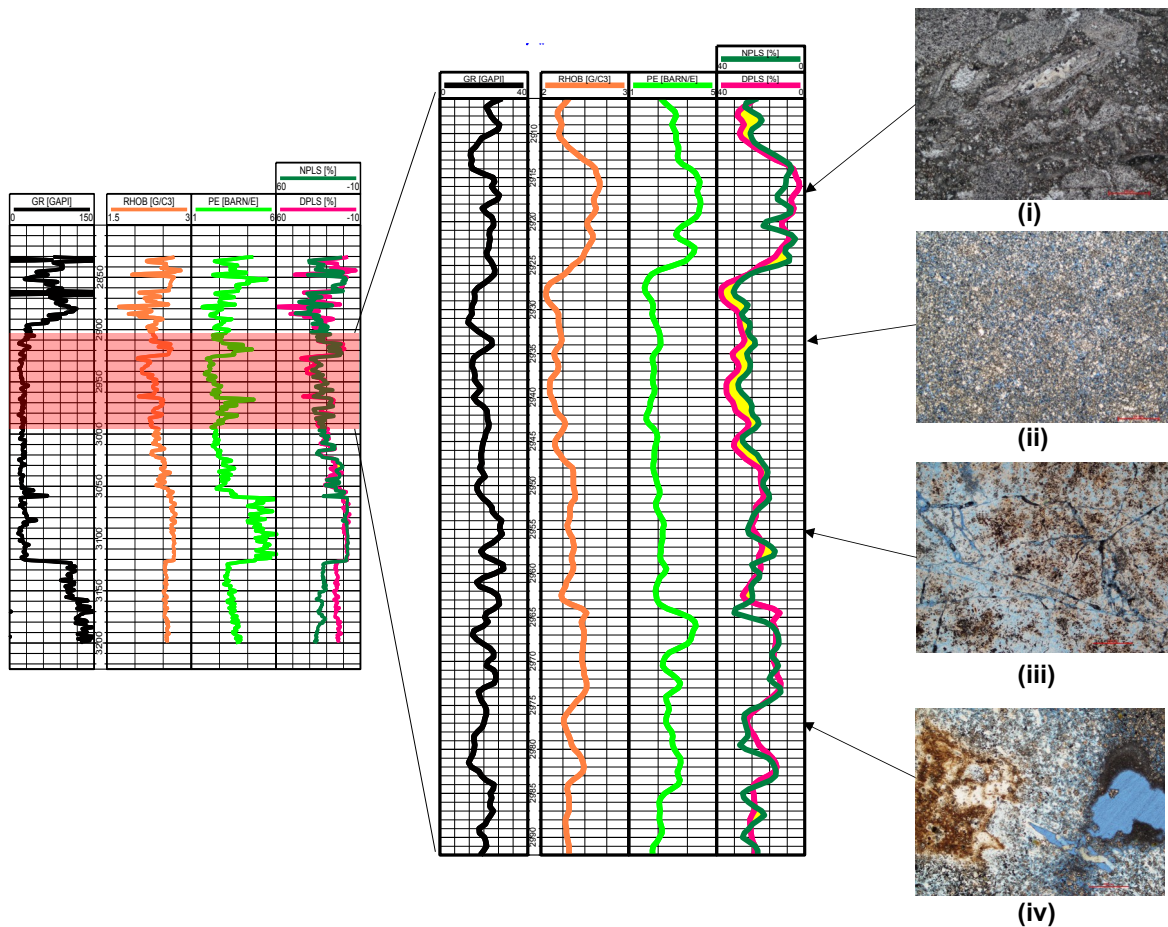


Figure 1: Log curves from Canton #1-36 well showing the cored interval shaded red (a.) with relatively lower GR values averaging 30 GAPI black curve), RHOB (orange curve) between 2.06 g/cm³ and 2.67 g/cm³, PE (bright green curve) between 1.72 and 4.26 b/e, DPLS and NPLS porosity (dark green and pink curves respectively) with average porosity values between <5% and 36%. Thin section images at 4 different depths (c.) show (i) relatively tight section, (ii) interparticle porosity, (iii) fracture and interparticle (iv) vuggy porosity

The thin sections show (i) a very low (tight) porosity section, from an interval with relatively higher bulk density (RHOB) and higher photoelectric (PE) factor; (ii) a highly porous, mostly single porosity type section with primary interparticle microporosity zone and relatively lower RHOB and PE values; (iii) a porous dual porosity section, with abundant fractures and interparticle porosity and similar RHOB and PE values as (ii) and (iv) a highly porous triple porosity section with porosity zones characterized by fracture, vuggy and interparticle porosity.

Porosity cross plots

Cross plots are scatter charts generated from porosity and other log (RHOB, DT, NPLS, DPLS and PE) data. They compare the porosity data obtained by one type of measurement (e.g. RHOB) to porosity data obtained by another type of measurement (e.g. neutron porosity) to interpret mineral facies, lithofacies and other petrophysical characteristics of the interval. This interval has density and neutron log data but no DT (sonic log data) for cross plot analyses.

Density Porosity log

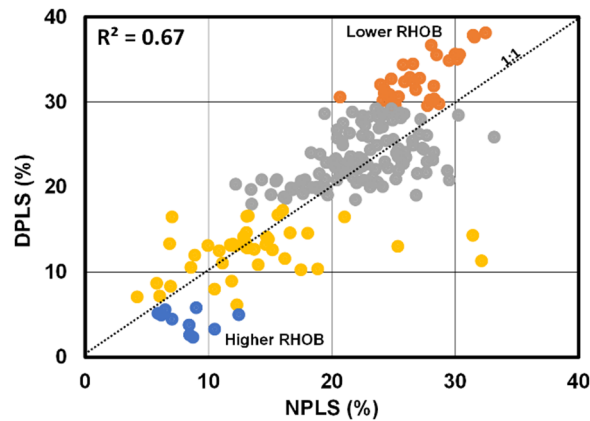
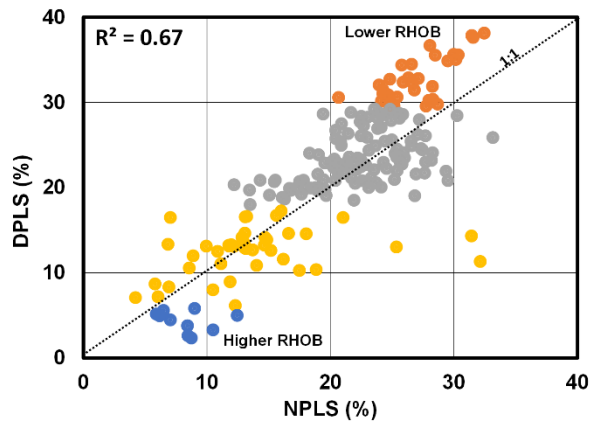
Density porosity is determined from the bulk density log. Formation bulk density is the overall density of a formation with all its constituents. Bulk density is a function of: *matrix density* (this is the density of the solid particles and grains that make up the rock), *porosity* (the volume of pore spaces between the grains in the rock), the *type of fluid* in the pores (i.e. oil, gas, formation water or drilling mud) and the *fluid saturation* (amount of each type of fluid) in the rock. These components also control other formation properties and make the density logs potentially useful for identifying other useful formation characteristics *such as gas bearing zones* (in combination with the neutron log), the presence of *heavy minerals* (e.g. anhydrite), or *facies characteristics* (combined with other logs e.g. NPLS and PE). Bulk density is typically acquired in combination with the PE log.

Neutron Porosity log

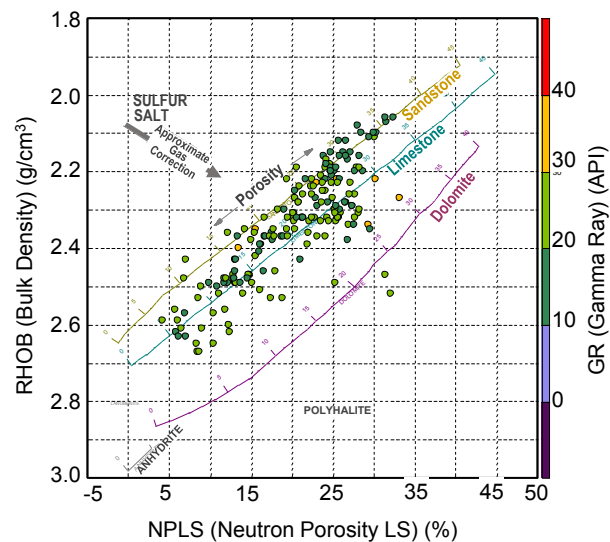
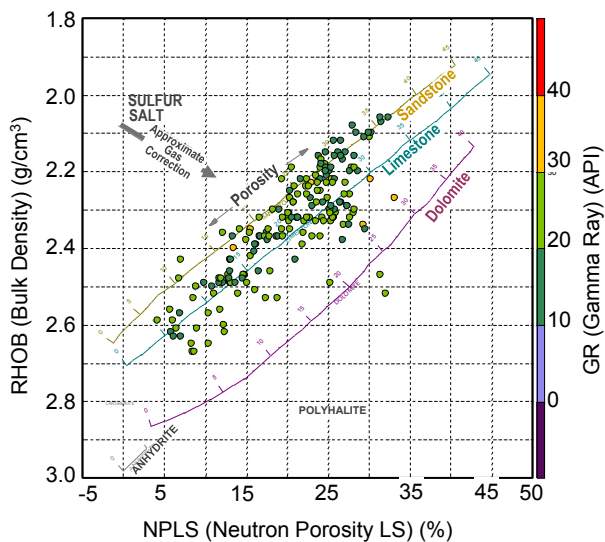
Neutron porosity is determined from the neutron log. The neutron log basically measures the amount of *hydrogen (H)* atoms present in a formation. This is because most of the hydrogen in rocks is mostly found in the fluid (fluids include liquids and gases) components of the rock. For example, *water (H₂O)* contains two atoms hydrogen, *natural gas* e.g. *methane (CH₄)* contains four atoms of hydrogen and *higher hydrocarbons* such as octane (C₈H₁₈) a component of gasoline contains even more hydrogen atoms and so forth. Thus, with very few exceptions, the presence of hydrogen atoms in a rock indicates that there are fluids which means that the rock has pores. Therefore, by measuring the amount of hydrogen atoms (hydrogen index) in a rock, the information is then used to estimate the amount of porosity in the rock. In the presence of clays, the hydrogen in the bonded water can be miscalculated as part of the pores and falsely increases the porosity reading in the formation from its actual porosity value. This is common in rocks containing clays and known as the *shale effect*.

Neutron -Density Cross Plots

Neutron porosity vs. density porosity (or bulk density) cross plots are best used in intervals with the absence of natural gas. This is because gas saturation skews density porosity by increasing the density porosity readings and decreasing the neutron porosity reading from actual porosity values. This is known as the *hydrocarbon gas effect*.



However, if there are some clays in the formation, the neutron porosity reading maybe skewed and the data point will plots higher porosity than the actual porosity values (*shale effect*). Therefore when density porosity and neutron porosity are plotted together (Figure 2), data points show deviations from the 1:1 line due to these effects (the presence of gas, clays or and/or heavy minerals). On figure 2, gas influenced zones typically plot above the equality 1:1 line where density porosity values are higher than the neutron porosity values. In clay influenced zones, points plot below the equality line where neutron porosity values read higher than density porosity values. Denser minerals plot closer to the zero porosity value as opposed to low density particles. If the formation contained unusually heavy minerals (i.e. their density is greater than that of the mineral used to calibrate the porosity log data), the density porosity values will read lower than actual porosity or even read negative values (i.e. less than zero porosity). This is known as the *heavy mineral effect*. In this case, intervals above the line are generally higher in gas and intervals below the line are higher in clays (shaly).



Cross plot

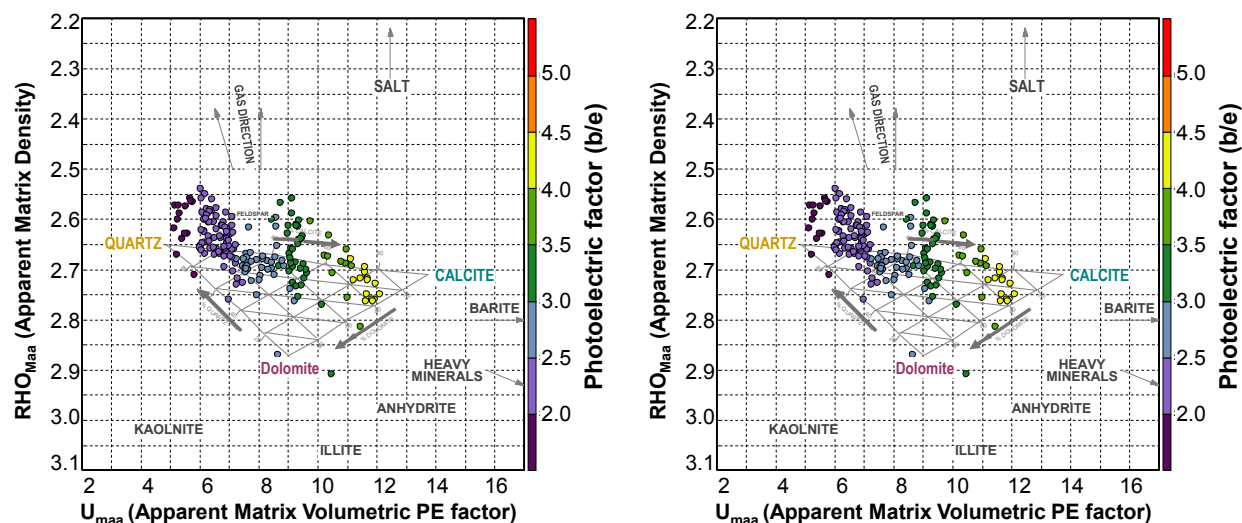
overlays

When a lithology overlay of sandstone, limestone and dolomite is added to the neutron porosity vs. bulk density cross plot (Figure 3), most of the data points plot between the sandstone-limestone lines. Fewer points plot between the limestone-dolomite lines. Other points plot above the sandstone (gas) and below the dolomite line (shales). Thus figure 3 suggest that the interval is mostly composed of calcareous-sandstone facies with some dolomitic limestone, shaly and gas bearing zones.

Given that the data points mostly fall between and not on the lithology lines, further investigation to determine relative mineral phases follows. This is especially likely due to variations in PE log values that are mostly outside the known values for the pure lithologies on figure 3. For example, quartz the mineral in sandstones has a PE value of 1.81 b/e,

calcite the mineral in limestone has a PE of 5.08 b/e, dolomite has a PE of 3.14 b/e. Clays have different PE values (between 1.8 to >6.0 b/e) although shales typically average around 4.0 b/e.

A cross plot of apparent matrix density (RHO_{maa}) and apparent matrix volumetric photoelectric factor (U_{maa}) overlay with the ternary mineral chart for quartz-calcite-dolomite is shown on figure 4. In this case, most of the data points plot in the high quartz –dolomite and feldspar zone with fewer points in the zones representing high % calcite. The dominant minerals phases in the interval are quartz, feldspar, dolomite and to a lesser extend calcite. Note that the portion of the samples representing feldspars plot outside and above the ternary chart field.



The U_{maa} - RHO_{maa} cross plot overlay therefore suggest a more dolomitic–silicate (quartz, feldspars, clays) facies, which somewhat conflicts with observations from the neutron porosity vs. bulk density cross plot lithology overlay that showed a more calcareous-siliceous facies. These slight discrepancies are attributed to the fact that formations are not “clean” (i.e. composed on only pure mineral types), as well as the presence and variation in fluid types and fluid saturation.

Combining analyses from figure 3 and 4, and taking into account GR values and visual core observations four mineral facies groups are identified for the interval.

1. Siliceous facies (quartz and amorphous silica)
2. Arkosic facies / feldspathic wackes (feldspars)
3. Argillaceous facies (clay minerals)
4. Carbonate facies (dolomite and calcite)

Additional geochemical measurements of X-ray diffraction and X-ray fluorescence and thin section analyses of additional characterization of the interval will be presented in a later segment to this article.

For further questions or comment contact: hnali@fhsu.edu

acknowledgment:

I want to thank Orca Resources LLC for donating Core samples and funding for core analyses

Useful References:

- Asquith, George B., Daniel Krygowski, and Charles R. Gibson. *Basic well log analysis*. Vol. 16. Tulsa: American association of petroleum geologists, 2004.
- Johnson, David Earl, and Kathryn E. Pile. *Well logging in nontechnical language*. PennWell Books, 2002.
- Martin K. Dubois and W. Lynn Watney. *Mid-Continent Core Workshop: From Source to Reservoir to Seal*. Kansas Geological Survey/Kansas Geological Society, Ed. Julie Tollefson, pp.236, Mid-Continent Section AAPG, 2013.

AAPG Section Meeting Updates

Eastern - Morgantown W. VA - Sept. 24-27

Mid-Continent - Oklahoma City, OK - Sept. 30-Oct. 3

Gulf Coast San Antonio, TX - November 1-3

Please plan to attend the AAPG Mid-Continent Section Meeting

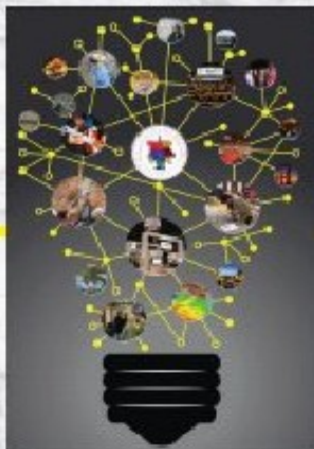
It will be educational and a great opportunity to meet old friends and create new contacts during these downtimes.

EDITOR'S NOTE:

In the far distant past, there was an effort to get the membership to agree to receiving the Bulletin online on the KGS website in pdf format. I, as well as the vast majority of the membership, opted to continue getting a mailed hard copy. In my current capacity as treasurer of the KGS, it has become apparent to me that we need to really consider going to online only or possibly assessing a surcharge to cover the printing and mailing costs of the Bulletin. Our current costs of printing and mailing the Bulletin are not covered by our declining advertising revenue. I welcome input from the membership on this matter.

My email is *whansen4651@sbcglobal.net*.

I will endeavor to come up with some hard numbers for the next issue. Obviously, no changes will occur prior to the end of the current calendar year.



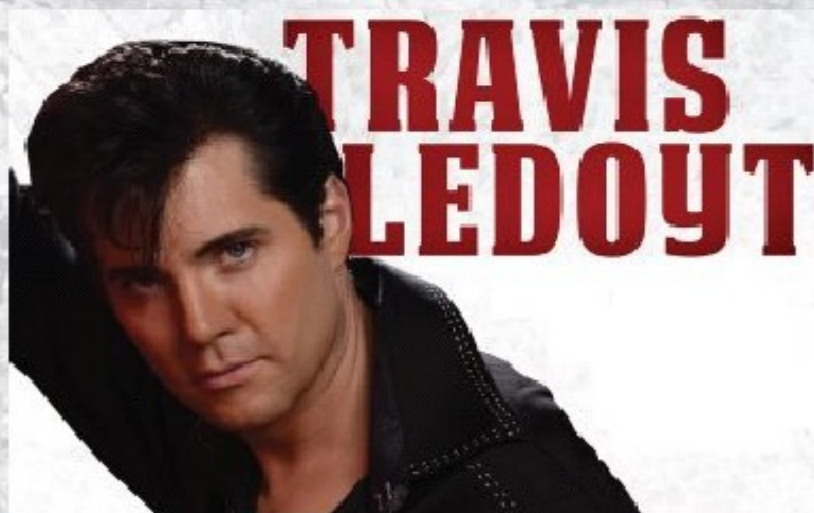
The
**2017 AAPG MID-CONTINENT
SECTION MEETING**

**61 DAYS
TO THE
EVENT !**

Oklahoma City, Oklahoma
Saturday, September 30th through
Tuesday, October 3rd, 2017

C'mon, don't be a hound dog !

Prepare yourself to be amazed by a special appearance of Travis LeDoyt, who was recently featured in the New York Times as the "World's Best Young Elvis." His remarkable resemblance and dynamic performance as a tribute to Elvis is truly spectacular. His incredible talent has been seen by thousands as he has traveled all across the United States and toured internationally. Travis has also become one of the star headliner acts for the Royal Caribbean Cruise Lines.



**The best Mid-Continent Section Meeting
is coming on fast ! Register Online:**

www.2017AAPGMCSMeeting.org

WOULD YOU LIKE TO INCREASE YOUR PRODUCTION AT A FRACTION OF THE COST OF HORIZONTAL DRILLING?



Well Enhancement Services, LLC is jetting laterals utilizing new technology and coiled tubing. We now have the ability to place hundreds of gallons of acid hundreds of feet away from the well bore. This allows us to not only enhance existing production but to produce reserves previously unreachable. It has established itself by repeatedly increasing production in both new and existing wells. Contact us for more information, questions or to schedule your next well with **WES**.



“Tap into success....with WES”

Please Contact Us:

Phone: (785) 625-5155

Fax: (785) 625-4151

Field: (785) 259-4638

wesofhays@hotmail.com
Box 87, Schoenchen, KS 67667

www.GeoSteering.com

281-573-0500

info@geosteering.com

**Free introductory consultation
with modeling:
let us demonstrate whether
images or propagation resistivity
could add value to your well.**

Personnel with degrees & 20+ years of oilfield experience

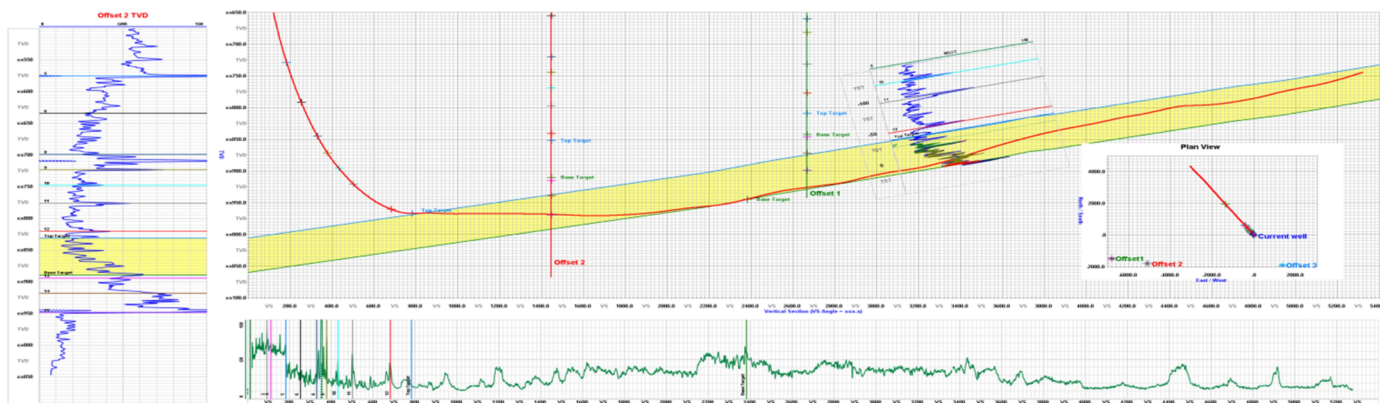
Proprietary software

TST interpretation for GR only jobs

**Image displays / interpretation for jobs with azimuthal GR,
resistivity or density**

**Resistivity modelling / interpretation for jobs with LWD
propagation resistivity**

Real-time (always)



PROFESSIONAL DIRECTORY

Kirk Rundle Consulting Geophysicist

3D Seismic Design, Acquisition to Processing QC.,
Interpretation and Analysis, Subsurface Integration
7340 W. 21st. N., Ste. 100
Wichita, Kansas 67205

Office: 316-721-1421 Fax: 316-721-1843

Email: kirk@rundlegeo.com

Covey The Well Watchers One Thousand Wells and Counting"

Curtis E. Covey Wellsite Petroleum Geologist

Gas Trailer Cell: 316-217-4679
Email: wellsitgeol@gmail.com

Office: 316-776-0367
6548 Bedford Circle
Derby, Kansas 67037

Gas Detection Trailer & Internet/Phone Communications



Scott Banks
Petroleum Geologist
banksb@aol.com
Cell: 316.253.8550

1700 N. Waterfront Pkwy.
Bldg. 300 • Suite C
Wichita, KS 67206

Phone: 316.558.5262
Fax: 316.558.5263

WESLEY D. HANSEN Consulting Geologist

Well site Supervision • Geologic Studies
212 N. Market, Ste 257
Wichita, Kansas 67202
Office/Mobile: (316) 772-6188
whansen4651@sbcglobal.net
35 Continuous Years in the Kansas Oil Patch



KEVIN L. KESSLER

INDEPENDENT/CONSULTING PETROLEUM GEOLOGIST

WELLSITE SUPERVISION • GEOLOGIC RESEARCH
OIL & GAS PROSPECTS
KANSAS & EASTERN COLORADO

MAILING ADDRESS

1199 N. PONDEROSA RD.
BELLE PLAINE, KS 67013

PHONE

RES.: (316) 522-7338
MOBILE: (316) 706-6636
EMAIL: KKESSLER1199@AOL.COM

ROGER L. MARTIN Independent Petroleum Geologist

200 E 1st St, Ste 405, Wichita, KS 67202

Cell: 316-833-2722 Office: 316-250-6970

KS Field Cell: 316-655-1227

Fax: 316-425-3829

Email: rogermartingeo@yahoo.com

ALFRED JAMES III Petroleum Geologist Kansas - Colorado - Utah

4912 E. 29th St. N., Ste. 3, Wichita, Kansas 67220

SIPES # 1111

Office (316) 267-7592
james.alfred21@yahoo.com

M. (Brad)ford Rine, Geologist

Licensed, Registered, Certified

PROSPECT EVALUATION
WELLSITE SUPERVISION
RESERVOIR STUDIES
EXPERT TESTIMONY

PROSPECT ORIENTATION
DRLG/COMPL CONSULTATION
PROPERTY EVALUATION
BANJO PICKER

100 South Main
Suite #415
Wichita, Kansas 67202

Email: rinemb@sbcglobal.net
Office & Cell: (316) 250-5941

Your business card ad
Could be right here
For only \$90/year

MELLAND ENGINEERING, INC.

Petroleum Engineering & Geological Consulting

James E. Melland, P.E., P.G.
President

Office: (620) 241-4621 Fax: (620) 241-2621

jamesm@mellandengineering.com
www.mellandengineering.com

P.O. Box 841, McPherson, KS 67460

Your business card ad
Could be right here
For only \$90/year

Robert F. Walters Digital Library

The most complete source for Kansas data

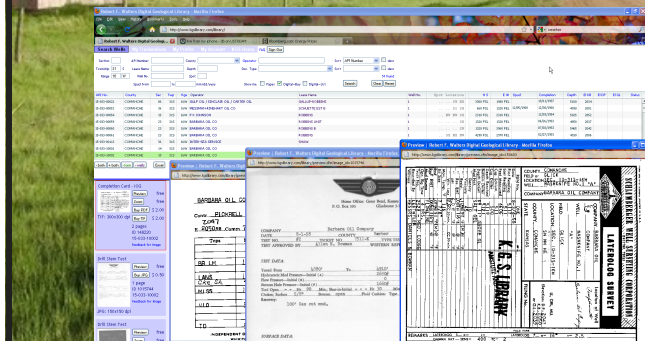
Database updated nightly

Day or Night

You can get to the data as you need it

www.kgslibrary.com

To Join: call 316-265-8676



We Invite You To join

Kansas Geological Foundation

*\$50.00 membership is
tax deductible*

Call 316-265-8676

*Or send checks to:
Kansas Geological Foundation
212 N. Market, Ste. 100
Wichita, KS 67202*

NOTICE!!!! WSU GEOLOGY CLUB & Papa John's Pizza

Papa John's offered WSU student organizations an opportunity to raise monies for their organizations.

The **WSU Geology Club** is participating
And **YOU** can help them!

When ordering pizza from Papa John's,
Use this code: **WSU004**
(those are zero's, not letter O)

With this code, the customer will receive 40% off
their entire online order and WSU's AAPG Student
Chapter will receive 10% of the money spent on the
order.

Eating pizza tonight?
Let's help WSU Geology Club!

Monies raised will be used towards gas money to
travel to local schools when they promote the geo-
sciences to grade schools, registration costs for
workshops, seminars and AAPG Student Expos, and
social and academic events like an upcoming
"Lunch and Learn" series next fall.

The Following Are For Sale

*Kansas Completion Cards:
Several sets (call for more information)*

Oklahoma Completion Cards

New Mexico Completion Cards

North Dakota Completion Cards

Utah Completion Cards

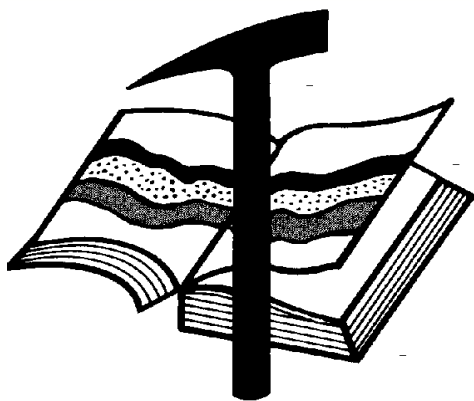
Microfiche Electric Logs

**Kansas
Oklahoma
Texas**

Geological Office Furniture:

- 8-drawer completion card cabinets
- 7-drawer cabinets
- Map cabinets—metal—2 available
- Map racks—different sizes

Call: 316-265-8676
Ask for Ted



Kansas Geological Foundation

Web Site: www.kgfoundation.org

**212 North Market
Wichita, Kansas 67202**

A not-for-profit educational and scientific corporation

GOALS:

- promote geology and earth science
- preserve geological records
- establish memorials and endowments
- support field trips and seminars
- financial aid and grants to students

PLEASE HELP SUPPORT THE FOUNDATION

Kansas Geological Foundation Services

The Kansas Geological Foundation provides the following services as a part of the organization's commitment to educate the public regarding earth science.

Speaker's Bureau

A list of speakers available to talk about various aspects of geology may be obtained by contacting Janice Bright at the KGS Library, 265-8676. This service is free to the public.

DVD/Videotape Library

The KGF maintains a DVD & videotape library focused primarily on the various fields of earth science. These tapes may be checked out without charge by the public. To obtain a list of tapes, please contact the KGS Library, 212 N. Market, Ste. 100, Wichita, KS 67202, or call Janice Bright at 265-8676.

The Kansas Geological Foundation was founded in March, 1989 as a not-for-profit corporation under the guidelines of section 501(c)(3) of the tax code to provide individuals and corporations the opportunity to further the science of geology. It is dedicated to providing charitable, scientific, literary and educational opportunities in the field of geology for the professional geologist as well as the general public.

KGF can receive in-kind donations through which the donor may receive a tax deduction. Of equal importance, the KGF provides the financial resources to sort, process and file this data at the KGS library. If you have a donation to make, please contact the KGF at 265-8676.

Your tax-deductible membership donation helps to defray the cost of processing donations and to support public education programs about the science of geology. Annual membership begins at \$50.00 per year. Donations of \$100.00 or more are encouraged through the following clubs:

Century Club	\$ 100 to \$ 499
\$500 Club	\$ 500 to \$ 999
Millennium Club	\$1000 to \$5000
President's Club	\$5000 and over

Kansas Geological Foundation

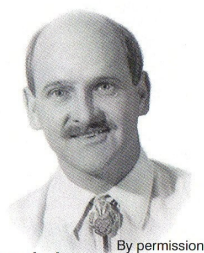
Cornerstone

Kansas Geological Foundation News

Fall 2017 Scholarship Recipients

Mikaela Rader	Kansas State University	\$500.00
Amy Olson	University of Kansas	\$500.00
Robert Baker	Wichita State University	\$500.00
Jonathan Woods	Wichita State University	\$500.00
Stacy Hendricks	University of Kansas	\$500.00
Logan Behr	Fort Hays State University	\$500.00
Isaac Allred	University of Kansas	\$500.00
Larissa Howard	Fort Hays State University	\$500.00
Kathleen Graham	University of Kansas	\$500.00

The Kansas Geological Foundation Needs You!



The KGF provides the financial resources to sort, process and file, in-kind donations of geological data at the KGS library. Due in large part to the KGF this unique and rare well of information is being made available to all. Please consider telling your company management and colleagues about the benefits of a library that continues expanding in part because of the KGF.

We very much value and need your financial support.

KGF Officers and Board Members

President- Larry Richardson
Vice President - Marc Summervill
Treasurer - Wes Hansen
Secretary - Ken Wallace

Board Members

Monica Williams
Bryce Bidleman
Brian Fisher
Ken Leblanc
David Doyel

Kansas Geological Foundation News

Students: The KGF awards scholarships each December and May. Check with your department chairs for applications. You must submit complete applications by the deadline.

Applications for the Spring semester will be due by December 1, 2017. At the December KGF meeting the recipients for Spring 2018 scholarships will be determined.

Grants to help with research on Kansas related geology are also considered for aid.

Currently, the Foundation has four students working on well log integration: Kyle Lawson, Helen Cruz, Shuyao Li (a.k.a. Emily) and David Bruce. They work between ten and thirty hours per week. More than a dozen other part-time integrators have worked on the project since 2010.

Between 2011 and 2016, the integration project compared 131,811 well logs to holdings on Walters Digital Library (WDL). Of these, 45,814 (34.8%) were not in WDL and were subsequently added to the library holdings. Additionally, 1,173 of the donated logs were re-scanned to replace poor images on WDL.

In the first seven months of 2017, 7,210 donated logs were compared to WDL. 1,110 (15.4%) new logs were added to WDL, with 263 rescans. Funding donated to the Foundation by the Society for increasing integrators' hours has greatly increased production. Thank you!"

Recent donations of data have been donated by Vincent Oil Corp., Don Beauchamp and Falcon Exploration, Inc."

Kansas Geological Foundation Video / DVD Collection

The KGF has an extensive collection of videos available for check-out at no charge.

Only pay for shipping back.

These are ideal for classroom or general public viewing.

See the web for titles & descriptions
www.kgfoundation.org

Call 316-265-8676
Ask for Janice to check out videos

Robert F. Walters Digital Library
The most complete source for Kansas data
Database updated nightly
Day or Night
You can get to the data as you need it
www.kgslibrary.com
To Join: call 316-265-8676

12 Drilling Rigs

To depth of 8,500 ft.



WESTERN KANSAS
SOUTHERN NEBRASKA
EASTERN COLORADO

For contract information contact:

Blaine Miller
Drilling Manager

316-858-8607 (Direct)
316-267-3241 (Main)

250 N. Water, Ste. 300
Wichita, KS 67202

DUKE
DRILLING COMPANY
ROTARY DRILLING CONTRACTOR

620 Hubbard PO Box 823
Great Bend, KS 67530
Phone 620-793-8366

100 S. Main, Ste. 410,
Wichita, KS 67202
Phone 316-267-1331
Fax 316-267-5180



2D & 3D Vibroseis Acquisition
ARAM*AIRES Seismic Recording System

1600 Broadway, Suite 1660 • Denver, CO 80202-4915
(303) 592-5220 • info@lockhartgeo.com
for complete information go to: www.lockhartgeo.com

Great Bend
(620) 793-5861

Ness City
(785) 798-3843

Medicine Lodge
(620) 886-5926



GREAT BEND 793-5861 NESS CITY 798-3843
MEDICINE LODGE 886-5926

Russell Oakley
(785) 483-2627 (785) 672-3452

AAPG Needs You!

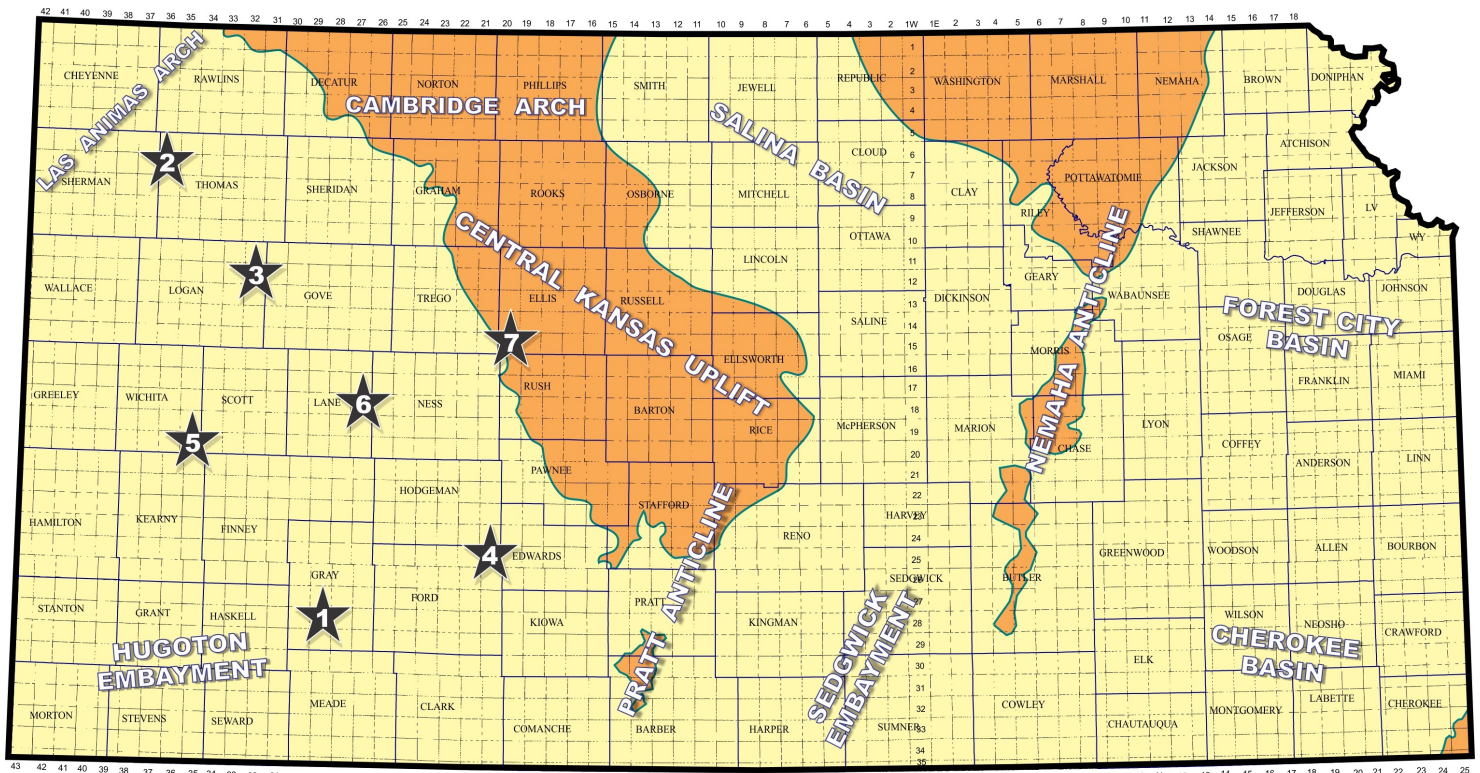
Professional geoscientists, share your world!

The Mid Continent Section has **17 AAPG Student Chapters**, but only **3 Visiting Geoscientists**...which makes it almost impossible to have a professional geoscientist visit to each school at least once a year or even once every two years. The aim of AAPG's program is to give students a flavor of a professional life in energy resources. It also hopes to encourage dialog between industry and academia.

To be a Visiting Geoscientist bearing the AAPG flag, you are asked to have at least 5 years of experience and make at least one visit per year to a university. It can be a school with an AAPG Student Chapter, or a college/university without one. Your choice.

The Mid Continent schools with Student Chapters are: Missouri University, Fort Hays State University, Iowa State University, Kansas State University, Missouri State University, University of Nebraska, Northwest Missouri State University, Oklahoma State University, University of Oklahoma, University of Arkansas, University of Iowa, University of Kansas, University of Missouri, Columbia University of Tulsa and Wichita State University.

Contact Robbie Gries, co-Chair VGP committee, Denver, if you are interested in learning more. rrgries@aol.com



Map courtesy of Marc Summervill

McCoy Petroleum Corporation, Wichita (KS), has successfully completed a new pool discovery well in southwestern Gray County, about 1.25 miles south of the town of Montezuma. The #1-36 Reed Trust A, drilled in the northeast corner of section 36- T28s- R29W, is producing an unknown amount of crude from the Mississippian formation. Sterling Drilling rig was used to bottom the well at a total depth of 5501 ft. The remote wildcat lies over 6 miles from closest known production in the county. the new field name is Montezuma Townsite. (API 15-069-20498)

Gulf Exploration LLC, Oklahoma City (OK), has discovered new Cherokee oil reserves at the #1-9 Carpenter Trust, spotted in the NE/4 of section 9- T7s- R36W, in Thomas County. The 5500-ft deep well establishes new field production over 2 miles northwest of the Guise Field (1979, Marmaton oil) and is nearly 4 miles from other known Cherokee production in the vicinity. Field area is located 6.5 miles north and 1.5 miles east of the town of Brewster. The new field has been named Barrett Township. (API 15-193-20987)

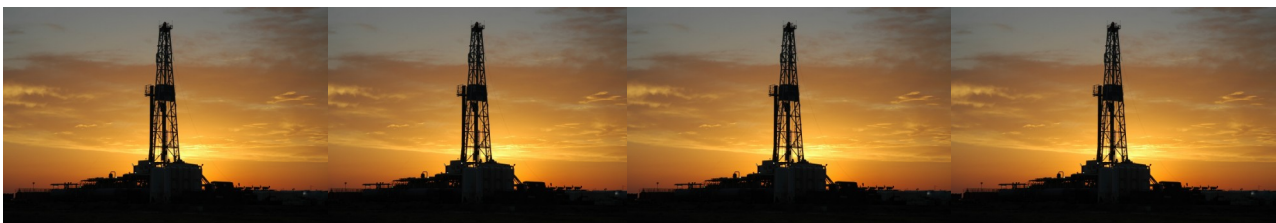
King Oil Operation, of Ellis (KS), is producing 33 bbl of water-free oil per day at the #1-12 Engel - Boyd Unit in Logan County. The well establishes the new Sky

Chief South oil field in the NE/4 of section 12- T12s- R32W, about 6.5 miles south and 1.5 miles east of the town of Oakley. The well found productive Cherokee zone at a depth of 4593 to 4597 ft. Total depth was obtained at 4700 ft. Discovery site lies about one mile south of the Sky Chief Field (2012). (API 15-109-21490)

Cobalt Energy LLC, Wichita (KS), has established a new oil-producing area in Ford County with the completion of the #1-36 Herrmann Unit 'A'. The wild-cat well is giving up 14 bbls of oil per day, no water, with commingled pay coming from the Cherokee formation at a depth of 4648 to 4671 ft., as well as a Mississippian zone from 4705 to 4711 ft. Total depth is 4800 ft. The new Ford Southwest pool discovery was drilled at location in the NE/4 of section 36- T25s- R21W, about 3.5 miles south of the town of Offerle, Kansas. (API 15-057-20977)

Lario Oil & Gas Company, Wichita (KS), has discovered oil deposits in the upper Marmaton and Pawnee formations at the #1-12 Lang in Wichita County. The new Langwich pool opener lies in the NW/4 of section 12- T20s- R35W, about 10.5 miles south and 4 miles east of Marienthal, Kansas. The well found the new reserves over 3 miles north of the White Woman North Field (1997) where the Marmaton formation also has produced. Operator bottomed the #1-12 Lang at a total depth of 5100 ft. (API 15-203-20316)

Knighton Oil Company, Inc., Wichita (KS), has successfully completed their #1 Goodman exploratory well in Lane County. The well is producing an undisclosed amount of crude oil from the Lansing-Kansas City 'K' (Swope) formation



Kansas Geological Foundation Memorials

KGS Member	Date Deceased	Memorial Est.	KGS Member	Date Deceased	Memorial Est.
Dan Bowles	09/89	1990	Claud Sheats	02/02	2002
John Brewer	10/89	1990	Merle Britting	2002	2002
George Bruce	08/89	1990	Harold Trapp	11/02	2002
Robert Gebhart	01/90	1990	Donald M. Brown	11/02	2003
Ray Anderson, Jr.	11/90	1990	Elwyn Nagel	03/03	2003
Harold McNeil	03/91	1991	Robert Noll	09/03	2003
Millard W. Smith	08/91	1991	Benny Singleton	09/03	2003
Clinton Engstrand	09/91	1991	Jay Dirks	2003	2003
M.F. "Ted" Bear	10/91	1991	J. Mark Richardson	02/04	2004
James & Kathryn Gould	11/91	1991	John "Jack" Barwick	02/01	2004
E. Gail Carpenter	06/91	1993	Richard Roby	03/04	2004
Benton Brooks	09/92	1992	Ruth Bell Steinberg	2004	2004
Robert C. Armstrong	01/93	1993	Gordon Keen	03/04	2004
Nancy Lorenz	02/93	1993	Lloyd Tarrant	05/04	2004
Norman R. Stewart	07/93	1993	Robert J. "Rob" Dietterich	08/96	2004
Robert W. Watchous	12/93	1993	Mervyn Mace	12/04	2004
J. George Klein	07/94	1994	Donald Hoy Smith	04/05	2005
Harold C.J. Terhune	01/95	1995	Richard M. Foley	06/05	2005
Carl Todd	01/95	1995	Wayne Brinegar	06/05	2005
Don R. Pate	03/95	1995	Charles B. Moore	09/96	2005
R. James Gear	05/95	1995	Jack Heathman	05/06	2006
Vernon Hess	06/95	1995	Charles Kaiser	09/06	2006
E. K. Edmiston	06/95	1995	Rod Sweetman	08/06	2006
Jack Rine	07/95	1995	Karl Becker	10/06	2006
Lee Cornell	08/95	1995	Frank Hamlin	10/06	2006
John Graves	10/95	1995	Marvin Douglas	12/06	2006
Wilson Rains	10/95	1995	Robert W. Hammond	04/07	2007
Heber Beardmore, Jr.	09/96	1996	Eldon Frazey	04/07	2007
Elmer "Lucky" Opfer	12/96	1996	Pete Amstutz	05/07	2007
Raymond M. Goodin	01/97	1997	Charles Spradlin	05/07	2007
Donald F. Moore	10/92	1997	Donald R. "Bob" Douglass	09/07	2007
Gerald J. Kathol	03/97	1997	Vincent Hiebsch	11/07	2007
James D. Davies	08/88	1997	Glen C. Thrasher	03/08	2008
R. Kenneth Smith	04/97	1997	Peg Walters	06/08	2008
Robert L. Dilts	05/97	1997	Theodore "Ted" Sandberg	07/08	2008
Delmer L. Powers	06/72	1997	James Ralstin	11/08	2008
Gene Falkowski	11/97	1997	Earl Brandt	04/09	2009
Arthur (Bill) Jacques	01/98	1998	Walter DeLozier	05/09	2009
Bus Woods	01/98	1998	Don D. Strong	01/10	2010
Frank M. Brooks	03/98	1998	John Stone	02/10	2010
Robert F. Walters	04/98	1998	Craig Caulk	03/10	2010
Stephen Powell	04/98	1998	Joseph E. Moreland, Jr.	03/10	2010
Deane Jirrels	05/98	1998	Gene Garmon	03/10	2010
William G. Iversen	07/98	1998	James F. Dilts	05/10	2010
Ann E. Watchous	08/98	1998	Jerry Pike	05/10	2010
W.R. "Bill" Murfin	09/98	1998	Donald Hollar	06/10	2010
Donald L. Hellar	11/98	1998	Delbert Costa	08/10	2010
Joseph E. Rakaskas	01/99	1999	John Tanner	08/10	2010
Charles W. Steincamp	02/99	1999	William (Bill) Owen	09/10	2010
Robert and Betty Glover	10/96	1998	Harold (Hal) Brown	10/10	2010
Howard E. Schwerdtfeger	11/98	1999	Edmund G. Lorenz	11/10	2010
W. W. "Brick" Wakefield	03/99	1999	Thomas E. Black	05/11	2011
V. Richard Hoover	01/00	2000	Wayne E. Walcher	07/11	2011
Warren E. Tomlinson	01/00	2000	Henry F. Filson	07/11	2011
James A. Morris	01/00	2000	Thomas Ray	07/11	2011
Eric H. Jager	03/00	2000	Edgar E. Smith	09/11	2012
Kenneth W. Johnson	03/00	2000	Marilyn Messinger	06/13	2013
Dean C. Schaaake	03/00	2000	Micheal Mitchell	09/13	2013
Fred S. Lillibridge	05/00	2000	Orvie Howell	11/13	2013
Jerry A. Langrehr	07/00	2000	James Thompson	11/13	2013
Clark A. Roach	07/00	2000	Dick Rowland	09/13	2014
Floyd W. "Bud" Mallonee	10/00	2000	Robbie Thompson	12/13	2014
Ralph W. Ruuwe	09/00	2000	Kris Kennedy	04/14	2015
Robert L. Slamal	02/01	2001	Annette Hedke	02/15	2015
Jerold E. Jespersen	06/01	2001	James Devlin	04/15	2015
William A. Sladek	06/01	2001	Robert Gensch	09/15	2015
Harlan B. Dixon	06/01	2001	Jerald Rains	05/16	2016
Edward B. Donnelly	08/01	2001	Max Houston	05/16	2016
Richard P. Nixon	02/02	2002	Robert "Gus" Messenger	01/17	2017
Robert W. Frensley	12/01	2002	Jimmy Wayne Gowens	04/17	2017
Gerald W. Zorger	01/02	2002			
Don L. Calvin	03/02	2002			

CHANGE SERVICE REQUESTED

KGS BULLETIN
September-October 2017

September 2017

Sun	Mon	Tue	Wed	Thu	Fri	Sat
					1	2
3	4	5	6	7	8	9
10	11	12 KGS Board	13	14	15 KGS Fishing Tourney	16
17	18 KGS Golf Tourney	19	20 KGF Board	21	22	23
24	25	26	27	28	29	30
October 2017						

Sun	Mon	Tue	Wed	Thu	Fri	Sat
1	2	3	4	5	6	7
8	9	10 KGS Board	11	12	13 KGS Shooting Tourney	14
15	16	17	18 KGF Board	19	20	21
22	23	24	25	26	27	28
29	30	31	30			